



Quick Installation Guide



TEW-424UB

Table of Contents

English	1
1. Before You Start	1
2. How to Install	2
3. Wireless Configuration	7
Troubleshooting	8

1. Before You Start



Package Contents

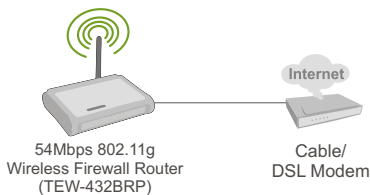
- TEW-424UB
- Utility & Driver CD-ROM
- Quick Installation Guide

System Requirements

- USB port: 1.1 or 2.0
- CD-ROM Drive
- CPU: Intel Pentium 300MHz or above
- Memory: 32MB RAM or above
- Windows XP/2000/ME/98SE

Application

Workstation with 54Mbps Wireless USB 2.0 Adapter (TEW-424UB)



54Mbps 802.11g
Wireless Firewall Router
(TEW-432BRP)

Cable/
DSL Modem



Workstation with 54Mbps
Wireless PCI Adapter
(TEW-423PI)



Notebook with 54Mbps
Wireless PC Card
(TEW-421PC)

2. How to Install

Important! DO NOT install the USB adapter in the computer until instructed to do so.

Note: Refer to the User's Guide on the Driver CD-ROM for Windows 98SE and Windows ME installation instructions

For Windows Users

1. Insert the **Utility & Driver CD-ROM** into your computer's CD-ROM Drive and then click **Install Utility**.



2. Follow the **InstallShield Wizard** instructions.

Note: For Windows XP, please continue to Step 3. For Windows 2000, please skip to step 11.

Windows XP

3. Click **Continue Anyway**.



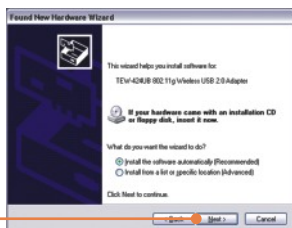
4. Click **Finish**.



5. Connect the wireless adapter to an available USB port on your computer.



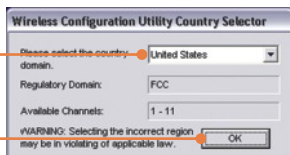
6. Click **Install the software automatically (Recommended)** and then click **Next**.



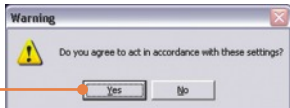
7. Click **Continue Anyway**.



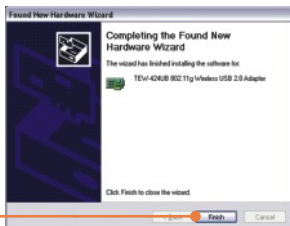
8. Select the appropriate **country domain** and then click **OK**.



9. Click **Yes**.



10. Click **Finish**.



Windows 2000

11. Click **Yes**.



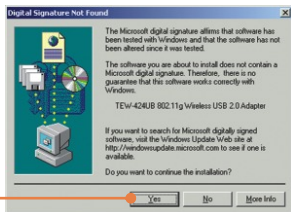
12. Click **Finish**.



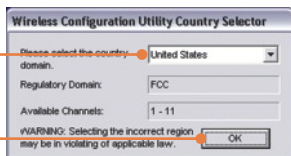
13. Connect the wireless adapter to an available USB port on your computer.



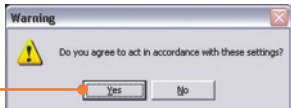
14. Click **Yes**.



15. Select the appropriate **country domain** and then click **OK**.



16. Click **Yes**.



Your installation is now complete.

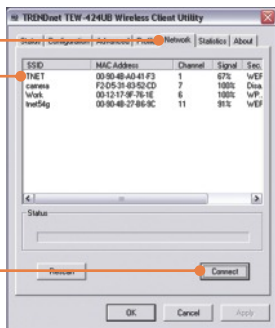
For detailed information regarding the TEW-424UB configuration and advanced settings, please refer to the User's Guide included on the Utility & Driver CD-ROM or TRENDnet's website at www.trendnet.com

3. Wireless Configuration

1. On the bottom right-hand corner of the screen, **double-click** on the **wireless client utility** icon.



2. Click **Network**, click the **SSID** that matches your wireless access point and then click **Connect**.



Wireless configuration is now complete.

For detailed information regarding the TEW-424UB configuration and advanced settings, please refer to the User's Guide included on the Utility & Driver CD-ROM or TRENDnet's website at www.trendnet.com

Q1: I inserted the Utility & Driver CD-ROM into my computer's CD-ROM Drive and the installation menu does not appear automatically. What should I do?

A1: If the window does not appear automatically, click Start, click Run, and type D:\autorun where "D" in "D:\autorun.exe" is the letter assigned to your CD-ROM Drive, and then press the ENTER key on your keyboard.

Q2: I completed all the steps in the quick installation guide, but my Wireless USB Adapter is not connecting to my access point. What should I do?

A2: First, verify that the Network Name (SSID) matches your wireless router or access point's Network Name (SSID). Second, check your TCP/IP properties to ensure that Obtain an IP address automatically is selected. Third, open the Wireless Client Utility icon, click the Network tab and then click Scan to check and see if there are any available wireless networks listed.

Q3: Windows is unable to recognize my hardware. What should I do?

A3: Make sure your computer meets the minimum requirements as specified in Section 1 of this quick installation guide. Also, you must complete the installation of the wireless configuration utility (as described in Section 2) before connecting the Wireless USB Adapter to your computer. Lastly, you may consider moving the Wireless USB Adapter to a different USB port of your computer.

Q4: I cannot open the wireless configuration utility. What should I do?

A4: Access your device manager to make sure the adapter is installed properly. If you see a networking device with a yellow question mark or exclamation point, you will need to reinstall the device and/or the drivers. To access your device manager, right-click My Computer, click Properties, under Hardware tab click Device Manager.

Q5: How do I install the drivers on Windows 98SE or ME?

A5: Please refer to the User's Guide included on the Driver CD-ROM.

If you still encounter problems or have any questions regarding the TEW-424UB, please refer to the User's Guide included on the Utility & Driver CD-ROM or contact Trendnet's Technical Support Department.

Certifications

This equipment has been tested and found to comply with FCC and CE Rules.

Operation is subject to the following two conditions:

- (1) This device may not cause harmful interference.
- (2) This device must accept any interference received. Including interference that may cause undesired operation.



Este equipamento opera em caráter secundário, isto é, não tem direito a proteção contra interferência prejudicial, mesmo de estações do mesmo tipo, e não pode causar interferência a sistemas operando em caráter primário.

Waste electrical and electronic products must not be disposed of with household waste. Please recycle where facilities exist. Check with you Local Authority or Retailer for recycling advice.



NOTE: THE MANUFACTURER IS NOT RESPONSIBLE FOR ANY RADIO OR TV INTERFERENCE CAUSED BY UNAUTHORIZED MODIFICATIONS TO THIS EQUIPMENT. SUCH MODIFICATIONS COULD VOID THE USER'S AUTHORITY TO OPERATE THE EQUIPMENT.

ADVERTENCIA

En todos nuestros equipos se mencionan claramente las características del adaptador de alimentación necesario para su funcionamiento. El uso de un adaptador distinto al mencionado puede producir daños físicos y/o daños al equipo conectado. El adaptador de alimentación debe operar con voltaje y frecuencia de la energía eléctrica domiciliar existente en el país o zona de instalación.



TRENDnet Technical Support

US • Canada

Toll Free Telephone: 1(866) 845-3673

24/7 Tech Support



Europe (Germany • France • Italy • Spain • Switzerland • UK)

Toll Free Telephone: +00800 60 76 76 67

English/Espanol - 24/7

Francais/Deutsch - 11am-8pm, Monday - Friday MET

Worldwide

Telephone: +(31) (0) 20 504 05 35

English/Espanol - 24/7

Francais/Deutsch - 11am-8pm, Monday - Friday MET

Product Warranty Registration

Please take a moment to register your product online.

Go to TRENDnet's website at <http://www.trendnet.com>

TRENDnet[®]

20675 Manhattan Place
Torrance, CA 90501
USA