



Quick Installation Guide



TEW-421PC
TEW-423PI

Table of Contents

Français	1
1. Avant de commencer	1
2. Procéder à l'installation	2
3. Utilisation de l'adaptateur sans fil	4
Troubleshooting	5

1. Avant de commencer



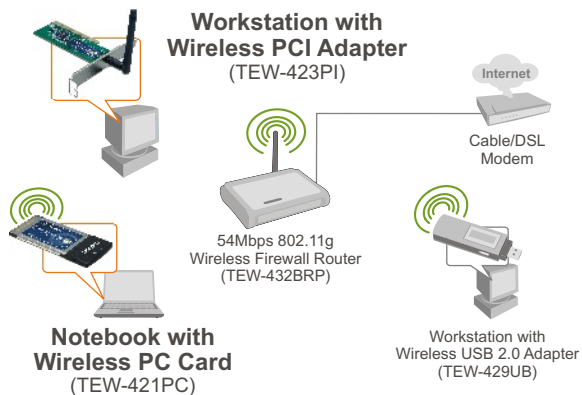
Contenu de l'emballage

- TEW-421PC/TEW-423PI
- CD-ROM avec le pilote et l'utilitaire
- Guide d'installation rapide

Configuration du système

- Logement pour carte Bus 32-bit de type II (TEW-421PC)
- Logement PCI 32-bit 2.2 (TEW-423PI)
- Lecteur de CD-ROM
- Microprocesseur : 300 MHz ou supérieur
- Mémoire: 256 MB ou supérieur
- Windows XP/2000/ME/98SE

Application



54Mbps Wireless

2. Procéder à l'installation

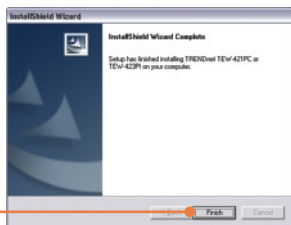
Important ! N'INSTALLEZ PAS l'adaptateur PCI dans l'ordinateur avant qu'on ne vous le demande.

Utilisateurs Windows

1. Insérez le **CD-ROM** avec **l'utilitaire et le pilote** dans le **lecteur** de CD-ROM de votre ordinateur et cliquez ensuite sur **Install Utility** (Installer l'utilitaire)



2. Suivez les instructions de l'écran **de l'assistant d'installation** et cliquez ensuite sur **Terminer**.



TEW-421PC

3. Eteignez votre ordinateur.



4. Insérez fermement la carte PC dans son logement, **démarrez** ensuite l'ordinateur et attendez que le bureau Windows apparaisse.



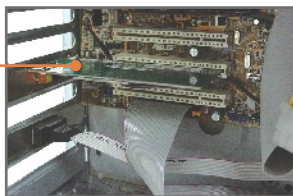
5. Poursuivez par l'étape 9.

TEW-423PI

6. Eteignez votre ordinateur.

7. Ouvrez le boîtier de votre ordinateur.

8. Insérez fermement la carte PC dans son logement, fixez l'antenne fournie, **démarrez** ensuite l'ordinateur et attendez que le bureau Windows apparaisse.



Windows XP/2000

9. Les pilotes s'installeront automatiquement.

Remarque : En ce qui concerne les instructions d'installation pour Windows 98SE et ME, consultez le Guide de l'utilisateur sur le CD-ROM contenant l'utilitaire et le Guide de l'utilisateur.

L'installation est maintenant complète.

3. Utilisation de l'adaptateur sans fil

Remarque : Si vous utilisez Windows XP, vous devez désactiver la Configuration Zéro sans fil. Pour ce faire, consultez la question 4 de la partie dépannage.

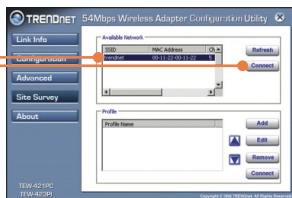
1. Dans le coin inférieur droit de l'écran, double-cliquez sur l'icône **wireless LAN Configuration utility** (Utilitaire de configuration LAN sans fil)



2. Cliquez sur **Site Survey** (Etude du site).



3. Cliquez sur le **SSID** correspondant à votre point d'accès sans fil et ensuite sur **Connect (Brancher)**.



La configuration sans fil est à présent terminée.

Si vous désirez des informations détaillées sur la configuration et les paramètres avancés du TEW-421PC/TEW-423PI, veuillez consulter la rubrique Dépannage, le guide de l'utilisateur sur CD-ROM ou le site Internet de Trendnet sur <http://www.trendnet.com>.

Q1: I inserted the TEW-421PC/TEW-423PI CD-ROM into my computer's CD-ROM Drive and the installation menu does not appear automatically. What should I do?

A1: If the installation menu does not appear automatically, click Start, click Run, and type D:\Autorun.exe where "D" in "D:\Autorun.exe" is the letter assigned to your computer's CD-ROM Drive, and then press the ENTER key on your keyboard.

Q2: I completed all the steps in the quick installation guide, but my card is not connecting to my access point. What should I do?

A2: First, verify that the Network Name (SSID) matches your wireless router or access point's Network Name (SSID). Second, check your TCP/IP properties to ensure that Obtain an IP address automatically is selected. Third, open the Wireless Client Utility icon, click Site Survey and then click refresh to check and see if there are any available wireless networks listed.

Q3: Windows is unable to recognize my hardware. What should I do?

A3: First, make sure your computer meets the minimum requirements as specified in Section 1 of this quick installation guide. Second, you must complete the installation of the wireless configuration utility (as described in Section 2) before connecting the Wireless Adapter to your computer. Third, connect the Wireless Adapter to a different PCI/PC Card slot on your computer.

Q4: I cannot open the wireless configuration utility. What should I do?

A4: First, access your device manager to make sure the adapter is installed properly. If you see a networking device with a yellow question mark or exclamation point, you will need to reinstall the device and/or the drivers. To access your device manager, right-click **My Computer**, click **Properties**, under the **Hardware** tab click **Device Manager**. Second, if you are running Windows XP, you need to disable wireless zero configuration. Go to **Control Panel -> Network Connections**. Right click on the **Wireless Network Connection** icon and select **Properties**. Click on the **Wireless Networks** tab and uncheck **Use windows to configure my wireless settings**. Then click **OK**.

Q5: How do I install the drivers on Windows 98SE or ME?

A5: Please refer to the User's Guide included on the Driver CD-ROM.

If you still encounter problems or have any questions regarding the TEW-421PC/TEW-423PI, please refer to the User's Guide included on the Utility & Driver CD-ROM or contact Trendnet's Technical Support Department.

Certifications

This equipment has been tested and found to comply with FCC and CE Rules.

Operation is subject to the following two conditions:

- (1) This device may not cause harmful interference.
- (2) This device must accept any interference received. Including interference that may cause undesired operation.



TEW-421PC: 0950-04-2375

TEW-423PI: 0949-04-2375

Este equipamento opera em caráter secundário, isto é, não tem direito a proteção contra interferência prejudicial, mesmo de estações do mesmo tipo, e não pode causar interferência a sistemas operando em caráter primário.

Waste electrical and electronic products must not be disposed of with household waste. Please recycle where facilities exist. Check with you Local Authority or Retailer for recycling advice.



NOTE: THE MANUFACTURER IS NOT RESPONSIBLE FOR ANY RADIO OR TV INTERFERENCE CAUSED BY UNAUTHORIZED MODIFICATIONS TO THIS EQUIPMENT. SUCH MODIFICATIONS COULD VOID THE USER'S AUTHORITY TO OPERATE THE EQUIPMENT.

ADVERTENCIA

En todos nuestros equipos se mencionan claramente las características del adaptador de alimentación necesario para su funcionamiento. El uso de un adaptador distinto al mencionado puede producir daños físicos y/o daños al equipo conectado. El adaptador de alimentación debe operar con voltaje y frecuencia de la energía eléctrica domiciliar existente en el país o zona de instalación.



TRENDnet Technical Support

US • Canada

Toll Free Telephone: 1(866) 845-3673

24/7 Tech Support



Europe (Germany • France • Italy • Spain • Switzerland • UK)

Toll Free Telephone: +00800 60 76 76 67

English/Espanol - 24/7

Francais/Deutsch - 11am-8pm, Monday - Friday MET

Worldwide

Telephone: +(31) (0) 20 504 05 35

English/Espanol - 24/7

Francais/Deutsch - 11am-8pm, Monday - Friday MET

Product Warranty Registration

Please take a moment to register your product online.

Go to TRENDnet's website at <http://www.trendnet.com>

TRENDnet[®]
20675 Manhattan Place
Torrance, CA 90501
USA