

TEW-401PCplus/TEW-403PIplus

125Mbps 802.11g Wireless Cards
Quick Installation Guide

Guide d'installation rapide pour le
Cartes Sans Fil 125Mbps de standard 802.11g

Schnell Anleitung
125Mbit/s 801.11g Wireless Karten

Guía de Instalación Rápida para
Tarjetas inalámbricas de 125Mbps 802.11g

Version 06.01.04



TRENDnet[®]
TRENDware, USA
What's Next in Networking

Table of Contents

English	1
1. Prepare for Installation	1
2. Install Wireless Configuration Utility	2
3. Install Hardware	5
4. Install Drivers	7
5. Configure Wireless Utility	10
Troubleshooting	18

English QIG

1. Prepare for Installation

Thank you for purchasing the TEW-401PCplus/TEW-403PIplus. Your new wireless network adapter will allow you to connect to 802.11g and 802.11b networks and begin wirelessly sharing the Internet, files, and other resources.

This guide will help you set up and configure your wireless card. Following this installation should be quick and easy. If you run into problems, please refer to the Troubleshooting section or the more detailed installation procedures on the User's Guide CD-ROM. If you need further technical support, please visit www.TRENDNET.com or call by phone.

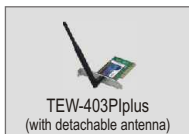
Verify Package Contents

Please make sure you have everything in the box:

TEW-401PCplus



TEW-403PIplus



Verify Equipment

Before installing this PCI Card or PC Card, you should have a:

1. Computer with an available 32-bit CardBus (TEW-401PCplus) or PCI slot (TEW-403PIplus)
2. 300 MHz processor and 32 MB of memory (Recommended)
3. CD-ROM drive
4. Properly-installed CardBus Controller (TEW-401PCplus only)
5. 802.11g Access Point (Infrastructure Mode) or another 802.11g wireless adapter (Peer to Peer Mode).

NOTE: Do not insert the WLAN Adapter in your computer until you have finished installing the Utility and Driver.

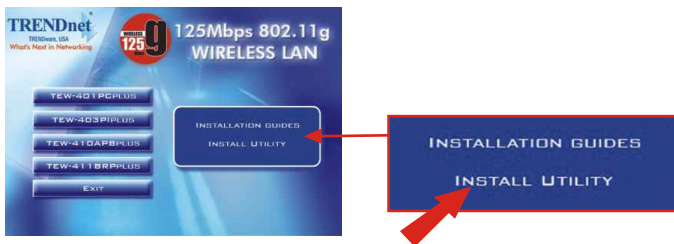
2. Install Wireless Configuration Utility

Windows 95/98/98SE/ME

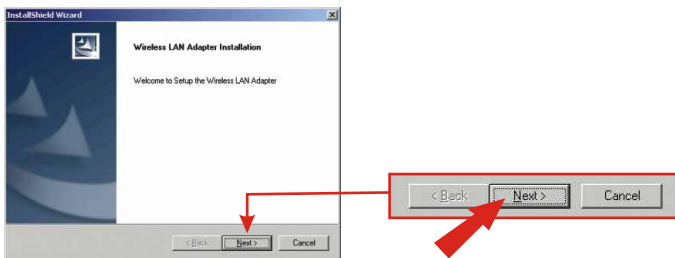
1. Insert the TEW-401PCplus/403PIplus CD-ROM into your computer's CD-ROM drive; the installation menu window will appear automatically. If the window does not appear automatically, click **Start**, click **Run**, and type **E:\Autorun.exe** in the text-field. Click **OK**.

NOTE: Replace “E” in “E:\Autorun.exe” with whichever letter is assigned to your CD-ROM drive.

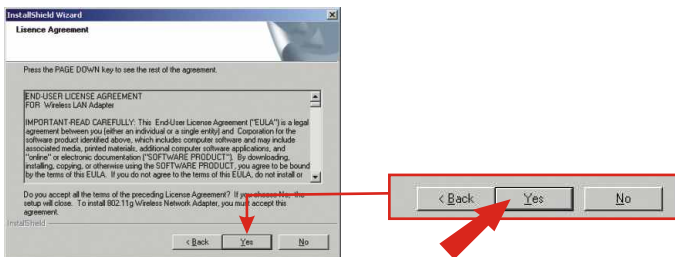
2. On the Installation Menu, Select the Wireless Card and click **Install Utility** button.



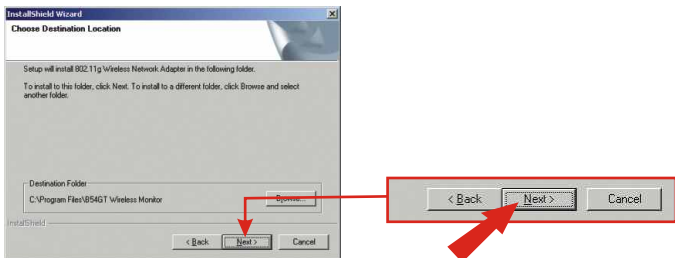
3. Follow the Install Shield Wizard's instructions to install the wireless configuration utility, click **Next** to start.



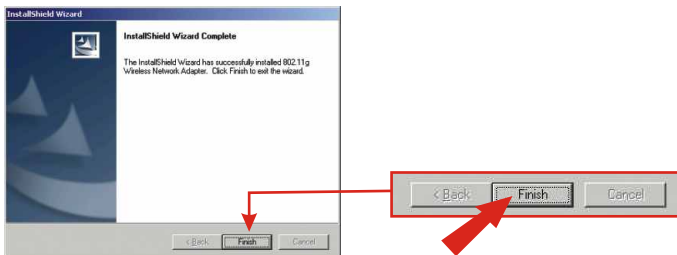
4. Simply go through the License Agreement and then click **Yes** to proceed.



5. Now the window will load the utility onto your computer, click **Next** to continue.



6. During the Utility installation procedures of Windows 2000/XP, a warning message for the Windows Logo testing verification will appear. Click **Yes** for Windows 2000 and **Continue Anyway** for Windows XP to proceed.
7. The Configuration Utility has been installed; click **Finish** to complete the installation.



NOTE: For Windows 98SE/ME, Windows will prompt a message for restarting the computer, select “No, I will restart my computer later,” and click Finish.

3. Install Hardware

If you are installing the TEW-401PCplus Wireless PC Card:

Proceed only if you have already completed the steps in Section 2

1. Shut down your computer.
2. Insert the PC Card firmly into your notebook PC's open PC Card slot. Only the plastic end-piece should protrude from the slot.
3. Reboot your computer.



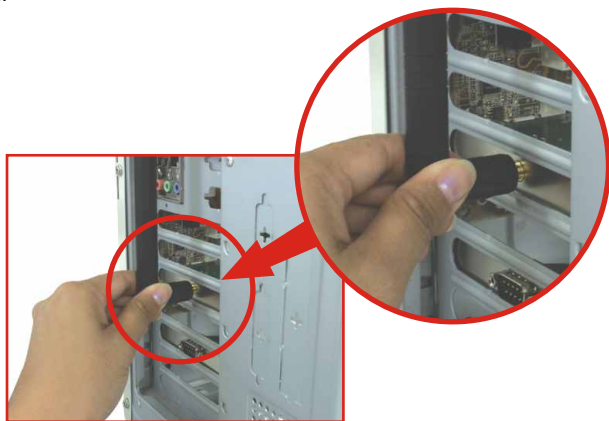
If you are installing the TEW-403Pplus Wireless PCI Card:

Proceed only if you have already completed the steps in Section 2

1. Shut down your computer.
2. Open your computer case to reveal the motherboard and expansion slots. (Please refer to your computer's user manual if you need help opening the case)
3. Insert the wireless card into one of motherboard's free PCI slots. Press down firmly and evenly on the card until it snaps into place.



4. Screw the PCI card's metal bracket into your case with a standard bracket screw. Attach the included antenna to the connector on the back of your card.



5. Close your computer case, and reboot your computer.

4. Install Drivers

Windows 98SE/ME

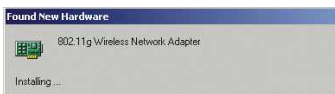
1. After your computer reboots, windows will detect the new hardware and load the driver automatically.



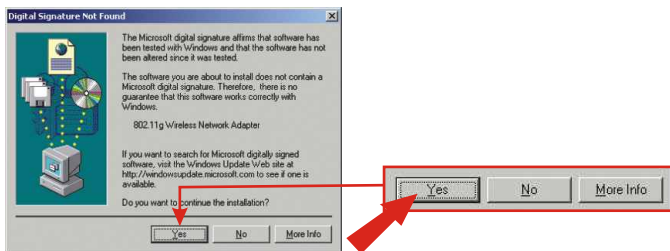
2. After the driver is installed, windows will prompt the following message, click **Yes** to save the changes and restart the computer.
3. Driver installation is now complete.

Windows 2000

1. After your computer reboots, windows will detect the new hardware and load the driver automatically.



2. When Digital Signature Not Found Window appears, click **Yes** to continue.

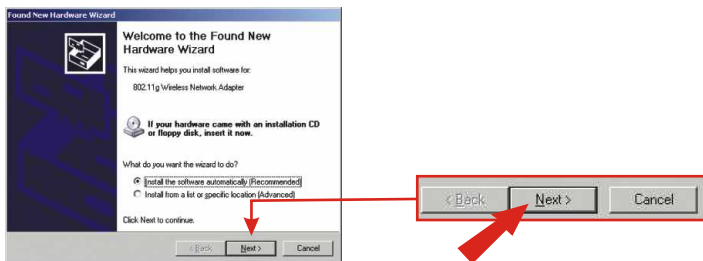


NOTE: TRENDnet's Wireless Adapters have been fully tested under all supported Windows Operating Systems and have been approved for their functionality.

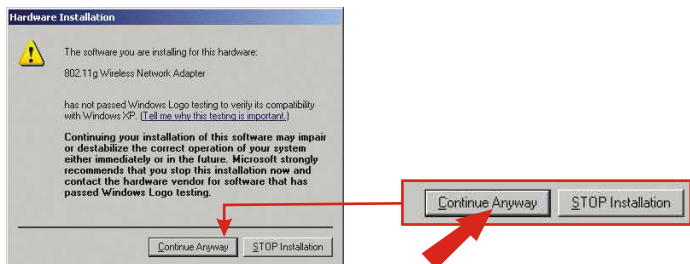
3. Driver installation is now completed.

Windows XP

1. After your computer reboots, the “Found New Hardware Wizard” will appear. Click **Next** to load the driver.

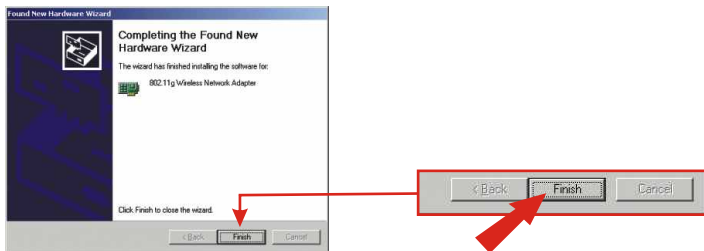


2. A warning message will tell you that the device you're installing has not yet been certified for Windows XP compatibility. Click **Continue Anyway**.



NOTE: TRENDnet's Wireless Adapters have been fully tested under all supported Windows Operating Systems and have been approved for their functionality.

3. Now the driver has been installed, click **Finish** to complete the installation.



4. Restart your computer.

5. Configure Wireless Utility

Infrastructure Mode (PC-to-Access Point Connection)

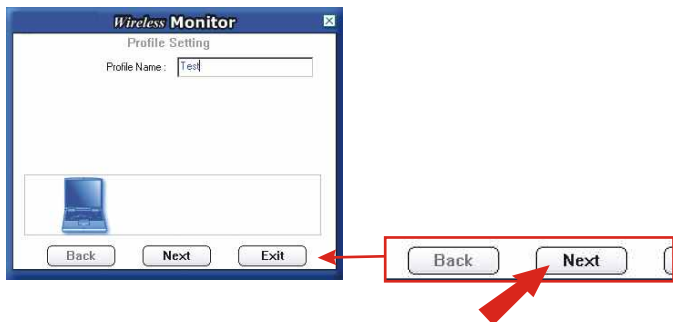
1. Double-click the wireless computer icon in your system tray (next to the clock in the bottom right corner of your screen).



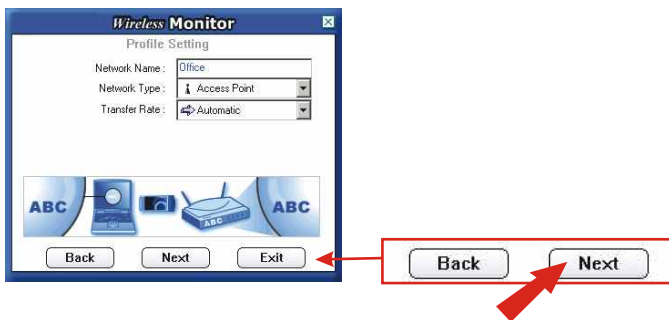
2. From the Wireless Monitor window, select Profile Setting tab , then click **Add**.



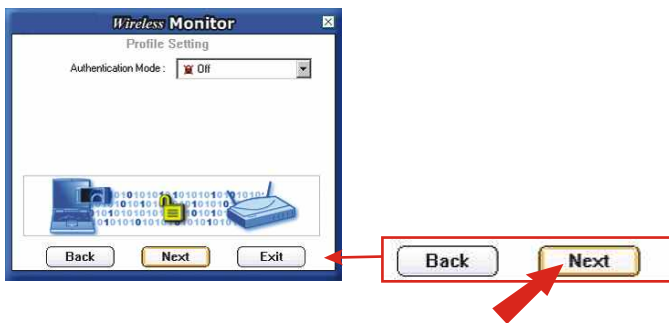
3. Type in a Profile Name, and then click **Next**.



4. Type in your Access Point's or Wireless Router's SSID for the Network Name and click **Next**.

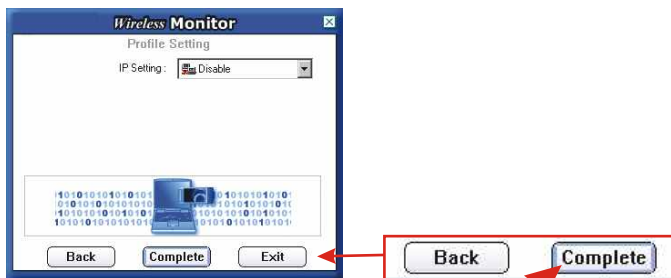


5. If your wireless network does not require security setting, click **Next** to continue.



NOTE: If you would like to set the Authentication Mode, select the option from the drop down menu and make sure the setting matches your wireless network's security settings.

6. If you do not need to configure IP settings, click **Complete**.

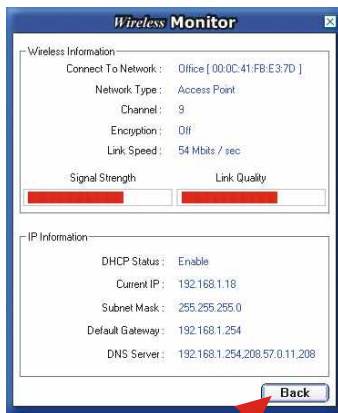


NOTE: IP Setting is "Disable" means the wireless card will Obtain an IP address automatically from a DHCP server. Otherwise, please specify an IP address to meet your wireless network's configuration.

7. Select the Profile you just created and click on the **Connect** button to connect.



- To verify your connectivity, you can select the **Link Information** tab and click More button. If you see connection information, your card's wireless configuration is complete.



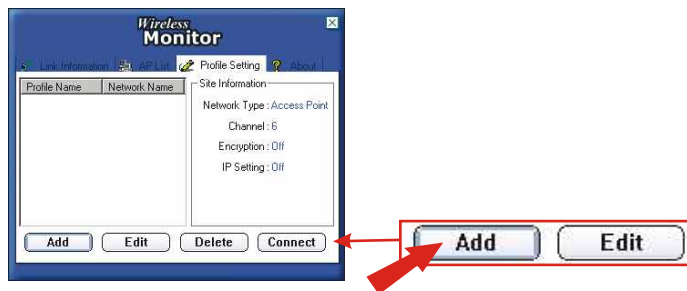
Your Wireless Card is now configured and ready for use!

Ad-Hoc Mode (PC-to-PC connection)

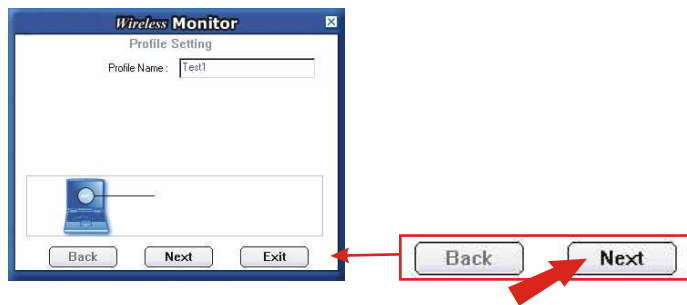
- Double-click the wireless computer icon in your system tray (next to the clock in the bottom right corner of your screen).



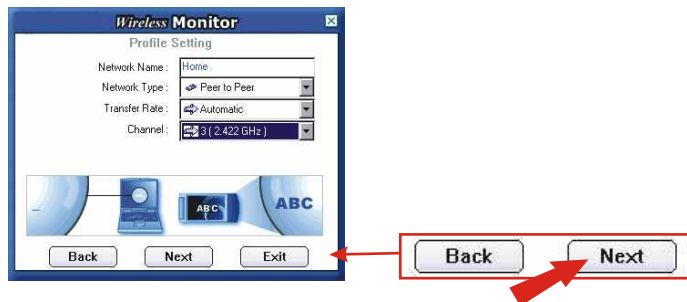
2. From the Wireless Monitor window, select Profile Setting tab, then click **Add**.



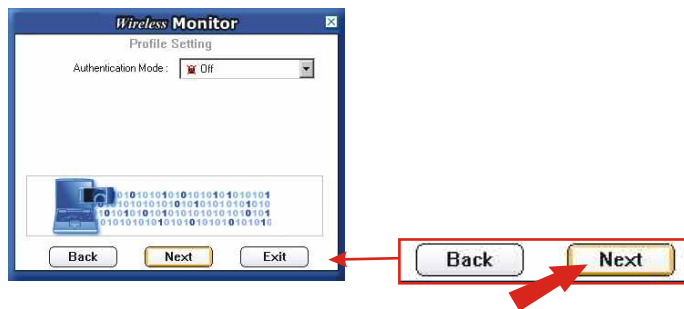
3. Create a Profile Name, and then click **Next**.



4. Create a Network Name for your Peer to Peer network and use the drop-down menus, set the: Network Type to **Peer to Peer**, Transfer Rate to **Automatic**, and select a Channel. Click **Next** to continue.

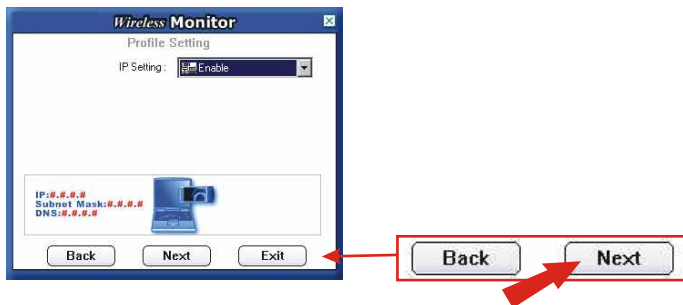


5. If your wireless network does not require security setting, click Next to continue.

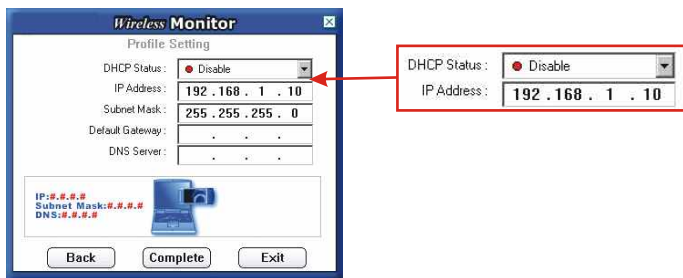


NOTE: If you would like to set the Authentication Mode, select the option from the drop down menu and make sure the setting matches your wireless network's security settings.

6. If your wireless network does not require security setting, click **Next** to continue.



7. Using the drop-down menu, set the DHCP Status to **Disable** and input the IP address. (in this example, the IP address is 192.168.1.10 and the Subnet Mask is 255.255.255.0)



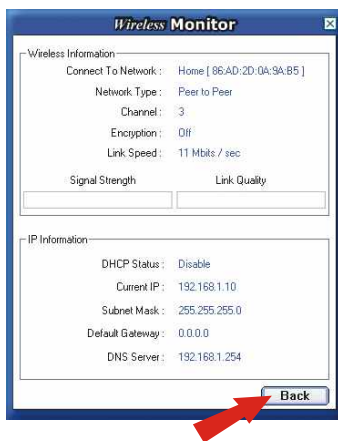
NOTE: On the second computer, follow the same steps 1-9. On step 9, you must specify a different IP address. For example, you may use the IP address 192.168.1.11, but the Subnet Mask remains 255.255.255.0)

8. Click **Complete** to finish the configurations.

9. Once you have configured both computers for “Peer to Peer” connection, select the Profile Name then click **Connect**.



10. To verify the “Peer to Peer” wireless network connection, select the Link Information tab, and click **More**. If you see connection information, your card's wireless configuration is not complete.



Your Wireless Network Adapter is now configured and ready for use!

Troubleshooting

Q1. I completed all the steps in the quick installation guide, but my card isn't connecting to my access point. What should I do?

A1. You should first verify that the Network SSID matches your wireless router or access point's SSID. If they already match, you should check your TCP/IP properties to ensure that **Obtain an IP address automatically** is selected.

Q2. Windows is unable to recognize my hardware. What should I do?

A2. Make sure your computer meets the minimum requirements as specified in Section 1 of this quick installation guide. Also, you must install the wireless configuration utility (as described in Section 2) before you physically install your network card. Lastly, you may consider moving the card to a different PCI/PC Card Slot.

Q3. I cannot open the wireless configuration utility. What should I do?

A3. Go to your device manager (control panel system) to make sure the adapter is installed properly. If you see a networking device with a yellow question mark or exclamation point, you will need to reinstall the device and/or the drivers.

If you still encounter problems, please refer to the User's Guide CD-ROM or contact technical support.

Contact Technical Support

Telephone: +1-310-626-6252

Fax: +1-310-626-6267

Website: www.TRENDNET.com

E-mail: support@trendware.com

Technical Support Hours

7:00AM ~ 6:00PM, Monday through Friday
Pacific Standard Time (except holidays)

Certifications

This equipment has been tested and found to comply with FCC and CE Rules.

Operation is subject to the following two conditions:

(1) This device may not cause harmful interference.

(2) This device must accept any interference received, including interference that may cause undesired operation.





Product Warranty Registration

Please take a moment to register your product online.
Go to TRENDware's website at <http://www.TRENDNET.com>

TRENDware International, Inc.
3135 Kashiwa Street
Torrance, CA 90505

<http://www.TRENDNET.com>