

TEW-230APB

802.11b 11Mbps
Wireless Access Point

Quick Installation Guide

Version 1.22.04



Copyright ©2004. All Rights Reserved. TRENDware International, Inc.

1. Prepare for Installation

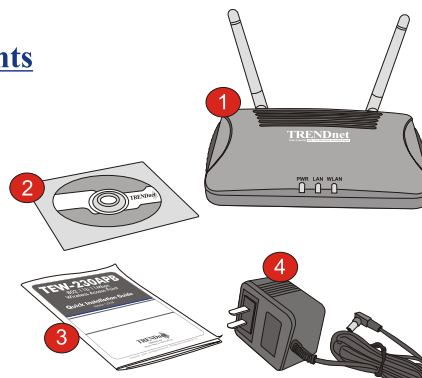
Thank you for purchasing the TEW-230APB. This Access Point will allow you to wirelessly share your files and resources with other users.

This guide will help you set-up and configure your Access Point. Following the installation instructions should be quick and easy. If you run into problems, please refer to the Troubleshooting section or more detailed installation procedures on the User's Guide. If you need further technical support, please visit www.trendnet.com or contact our technical support.

Verify Package Contents

Please check to make sure you have everything in the box:

1. TEW-230APB
2. Utility CD-ROM
3. Quick Installation Guide
4. AC Power Adapter



Verify Equipment

Before setting up the Access Point, you should have:

1. A Computer with a Wired or Wireless network card.
2. TCP/IP protocol installed on the Wireless Computer.
3. A Web Browser such as Internet Explorer (5.0 or higher) or Netscape Navigator (4.7 or higher).
4. A Hub or Switch connecting your existing wired network.
5. An RJ-45 Network Cable for connecting the Access Point to your network Switch.

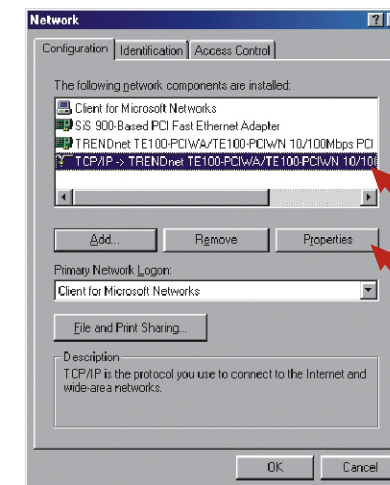
1

3. Setting up the Access Point

Before the Access Point can be accessed and configured, the computer's TCP/IP settings need to be changed.
(TEW-230APB Default IP is 192.168.1.100)

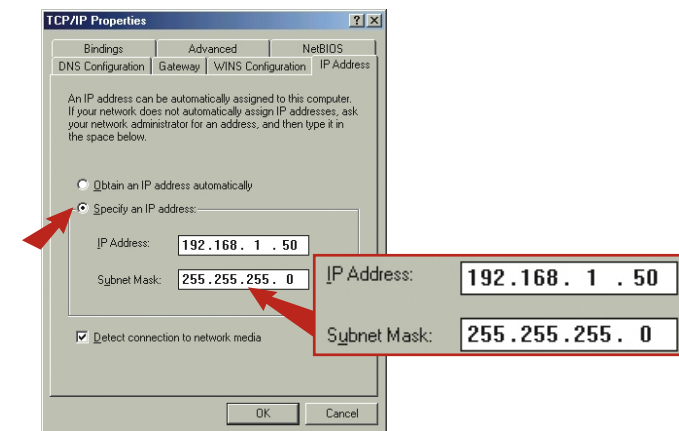
Windows 95/98/98SE/ME

1. Find the **Start** button located on the Desktop.
2. Click **Start**, click **Settings**, and then click on **Control Panel**.
3. Double-Click the **Network** icon, and the Network Properties box will appear.
4. Under the **Configuration** tab, locate and select **TCP/IP** with the corresponding network card. Then click on the Properties button and the TCP/IP Properties window will appear.



4

5. Under the **IP Address** tab, click on **Specify an IP address** and enter 192.168.1.50 for IP address and 255.255.255.0 for Subnet Mask and click **OK**.



6. Click **OK** on the Network wizard.
7. If you are prompted for the location of these files, insert Windows 98 CD-ROM into your CD-ROM drive and select CD-ROM drive to load the files.
8. After the files load, the System Settings Change message appears. Click **Yes** to reboot your system.



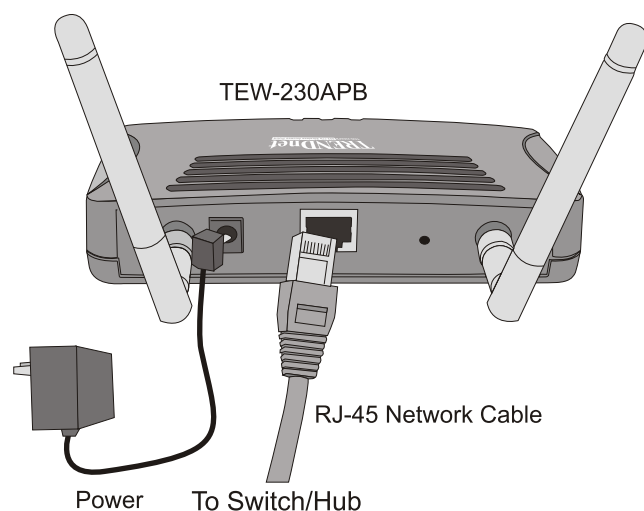
Note: If the message does not appear, you should manually restart your computer.

9. Your computer is now ready to access and configure the Access Point.

5

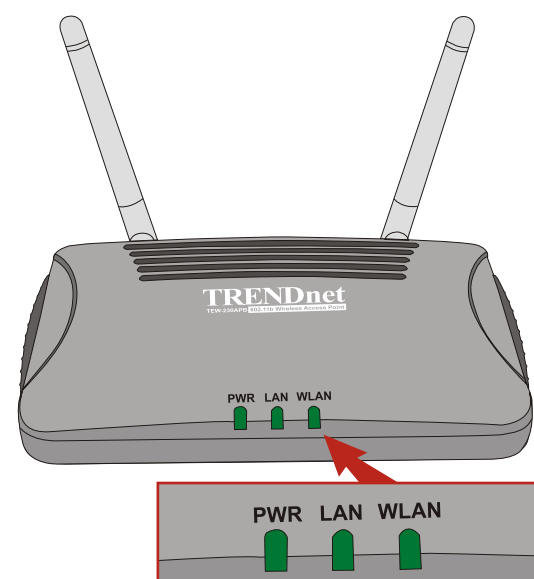
2. Install Hardware

1. Locate an optimum location for the Access Point. The best place for the Access Point is usually at the center of your wireless network.
2. Connect the RJ-45 network cable to the Access Point, then connect the other end of the network cable to a Switch or Hub. The Access Point is now connected to your 10/100Mbps network.
3. Connect the power adapter to the Access Point. Make sure you use the power adapter supplied with the Access Point; using a different power adapter may damage the unit.



Verify Hardware Installation

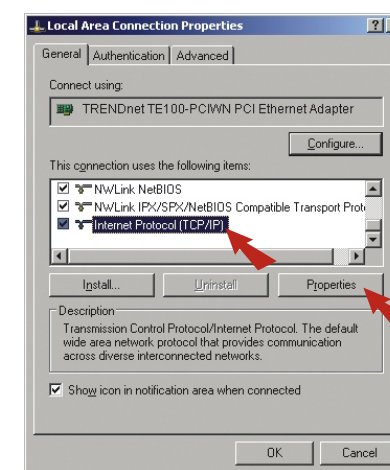
Check to make sure the following Access Point front panel lights are on: Power, LAN, WLAN.



3

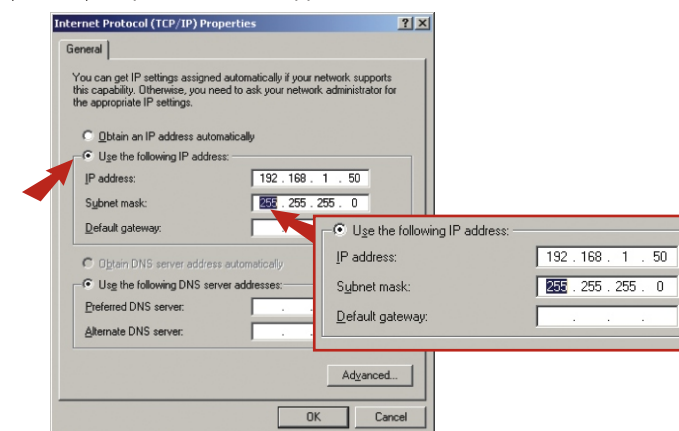
Windows 2000/XP

1. Find the **Start** button located on the Desktop.
2. Click **Start**, click **Settings**, and then click on **Control Panel**.
3. Double-Click the Network Connection icon.
4. Right-Click on the Local Area Connection icon, then click on Properties. The Local Area Connection Properties box will appear.



6

5. Under the **General** tab, locate and select Internet Protocol TCP/IP and then click Properties. The Internet Protocol (TCP/IP) Properties box will appear.



6. Click on **Use the following IP address**. Enter 192.168.1.50 for IP Address and 255.255.255.0 for Subnet, then click **OK**.
7. Click **OK** on the Local Area Connection Properties box to close it.
8. Your computer is now ready to access and configure the Access Point.

7

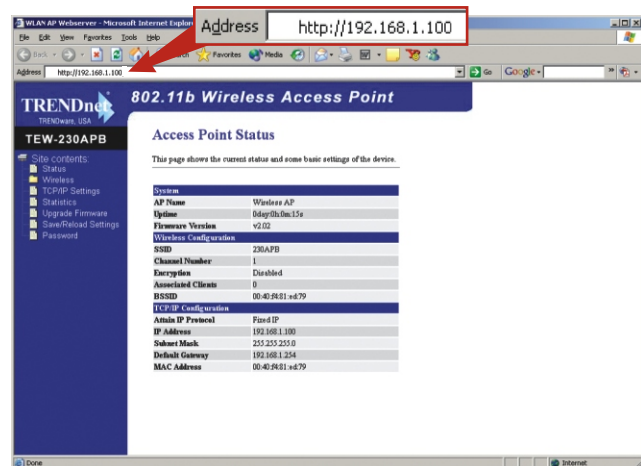
Note: If you are using a wired computer to configure the Access Point, please connect this computer to the same Switch or Hub the TEW-230APB is connected to.

2

4. Configure the Access Point

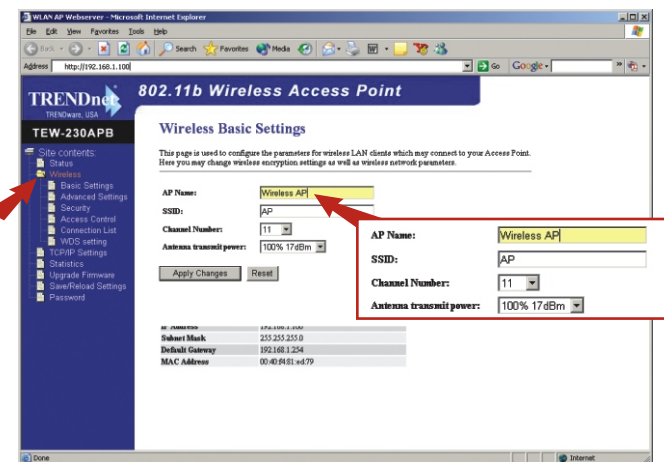
From a Wired Computer

1. Open a web browser (Internet Explorer or Netscape) and enter **http://192.168.1.100** in the address bar; then press the Enter key. The main configuration page will appear.



8

2. To configure the **Wireless Settings**, click on the Wireless option on the left panel; and select Basic Wireless Settings. The setting window will appear.

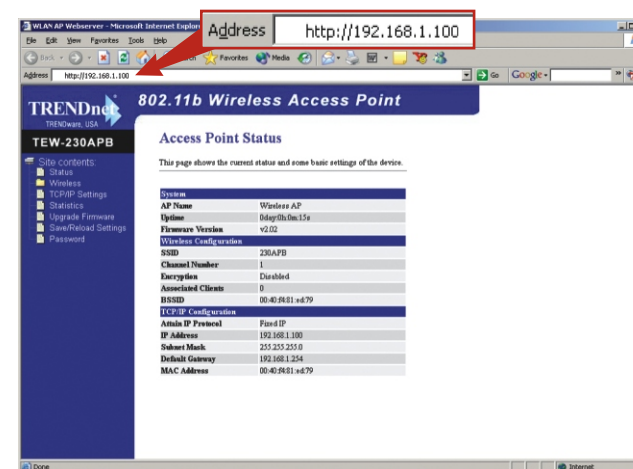


3. Enter any **AP Name** for your Access Point. Enter a valid SSID that your wireless network will be using, and select the channel you would like to use (For example: WirelessAP, HomeAP, or OfficeAP).
4. After entering the information, click on **Apply Changes** to submit the information.
5. The Access Point is now ready for your Wireless Network.

For detail information about TEW-230APB's configuration and advanced settings, please refer to the Troubleshooting section, User's Guide on the CD-ROM or from the TRENDnet website www.TRENDNET.com.

9

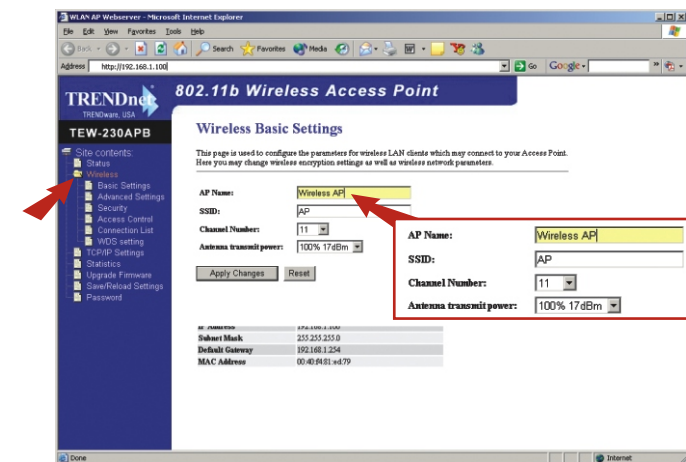
4. Now, open up a web browser (Internet Explorer or Netscape) and enter **http://192.168.1.100** in the address bar, then press **Enter** key. The Main configuration page will appear.



5. To configure the **Wireless Settings**, click on the Wireless option on the left panel, and select Basic Wireless Settings. The settings window will appear.

12

6. Enter any AP Name for your Access Point, a valid SSID that your wireless network will be using and select the channel you would like to use (For example: Wireless AP, Home AP, or Office AP).



7. After entering the information, click on **Apply Changes** to submit the information.
8. The Access Point is now ready for your Wireless Network.

For detail information about TEW-230APB's configuration and advanced settings, please refer to the Troubleshooting section, User's Guide on the CD-ROM or from the TRENDnet website www.TRENDNET.com.

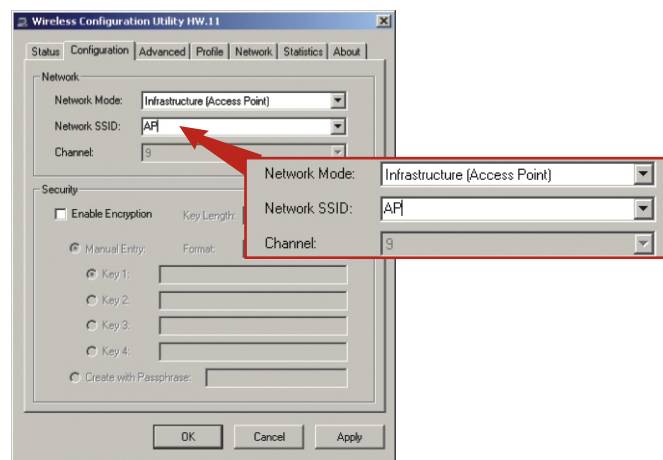
13

From a Wireless Computer

(Using TRENDnet's TEW-226PC as an example in this section)

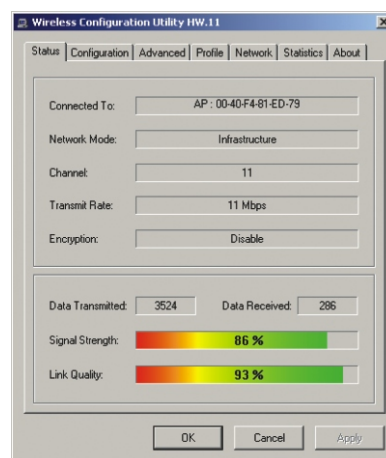
The default settings of the Access Point are:
SSID - AP
Channel - 11

1. On your wireless computer, open up your Wireless Utility Program which controls your Wireless Card. (Please consult with your Wireless Card Manufacturer if you have problem finding the Utility)
2. Go to the **Configuration** section and select Infrastructure for Network



10

3. Go to the **Status** section of your Wireless Utility Program. It should show your connection information to the Access Point.



11

5. Troubleshooting

Q1: I specified the IP address **http://192.168.1.100** in my web browser address bar but an error message says "The page cannot be displayed". How can I get into the TEW-230APB web configuration page?

A1: Please check your hardware and TCP/IP settings again by following the instructions in sections 1~3, and make sure the Power, Link, and LAN LEDs on the Access Point's front panel are on and the TCP/IP configurations are correct. Then try accessing **http://192.168.1.100** again.

Q2: If my network's IP is different than the Access Point's range, what should I do?

A2: You should still configure the access point first. After all the settings are applied, go to the Access Point's configuration page, click on TCP/IP settings, and change an IP address for the Access Point to match your network IP range.

Q3: After I successfully configured the Access Point to meet my existing network's settings, I cannot connect to my network using wireless computers.

A3: If you have a DHCP server in your network, you need to go into TCP/IP settings again and re-select "Obtain an IP automatically" for Windows 98/ME/2000/XP to allow the PC to regain an IP address from your DHCP server.

Q4: All the settings are correct, but I still can't use the Access Point. What should I do?

A4: You can find additional troubleshooting information in the User's Guide. If you still have problems, please contact Technical Support by email or phone.

14

Contact Technical Support

Telephone: +1-310-891-1100
Fax: +1-310-891-1111
Internet: www.trendnet.com
E-mail: support@trendware.com

Technical Support Hours:

7:00AM ~ 6:00PM, Monday through Friday,
Pacific Standard Time (except holidays)

15