

TEW-226PC

TEW-228PI

11 Mbps wireless adapter
Quick Installation Guide

Guide d'installation rapide de
l'adaptateur sans fil 11 Mbps 802.11b

Kurzanleitung zur Installation des
drahtlosen 11 MBit/s 802.11b Adapters

Guía de instalación rápida del
adaptador inalámbrico 802.11b a 11 Mbps

Version 10.25.04



TRENDnet[®]
TRENDware, USA
What's Next in Networking

Table of Contents

English	1
1. Introduction	1
2. Product Detail	2
3. Install Wireless Configuration Utility	3
4. Install Hardware	7
5. Install Drivers	9
6. Wireless Configuration	16
Troubleshooting	20

English QIG

1. Introduction

Thank you for purchasing TRENDnet's TEW-226PC/TEW-228PI wireless adapter.

This guide will help you set up your 11 Mbps wireless adapter. Following the installations should be quick and easy. If you run into problems, please refer to the Troubleshooting section. If you need further technical support, please visit www.TRENDNET.com or call technical support by phone.

Verify Package Contents

Please make sure you have everything in the box:



Minimum Hardware Requirements

1. Computer with an available Type II 32-bit CardBus slot (TEW-226PC) or 32-bit PCI slot (TEW-228PI)
2. 300 MHz processor or faster
3. 32 MB of RAM
4. 802.11b or 802.11g Access Point (for Infrastructure Mode) or another 802.11b wireless adapter (for Ad-Hoc/Peer-to-Peer networking mode).

2. Product Detail

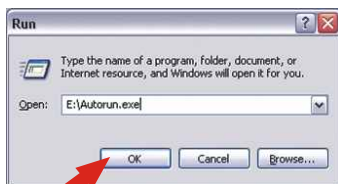
The TEW-226PC has two LEDs for network activity and power. The TEW-228PI has a detachable antenna with one LED indicating network activity.



3. Install Wireless Configuration Utility

Windows 98SE/ME/2000/XP

1. Insert the TEW-226PC/TEW-228PI CD-ROM into your computer's CD-ROM drive; the installation menu window will appear automatically. If the window does not appear automatically, click **Start**, click **Run**, and type **E:\Autorun.exe** in the text-field. Click **OK**.

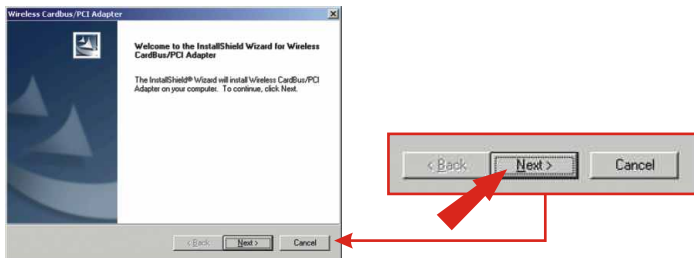


Note: Replace "E" in "E:\Autorun.exe" with whichever letter is assigned to your CD-ROM drive.

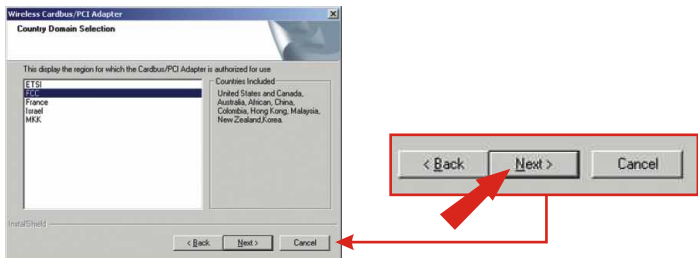
2. On the Installation Menu, click **Install Utility**.



3. Click **Next**.



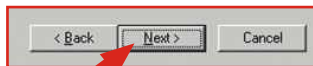
4. Select the region that applies to your country and click **Next**.



5. Click **OK**.



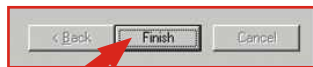
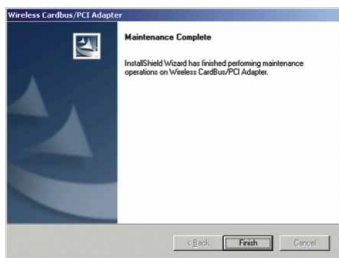
6. Click **Next** to start installing.



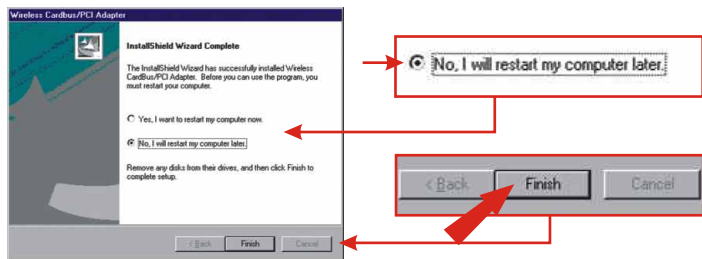
7. Click **Next**.



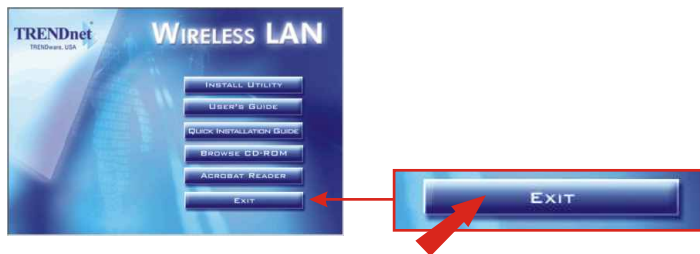
8. Click **Finish**.



Note: For Windows 98SE/ME, select “No, I will restart my computer later,” and click **Finish**.



9. Click **Exit** on the Installation Menu screen.



4. Install Hardware

If you are installing the TEW-226PC Wireless PC Card:

Proceed only if you have already completed the steps in Section 2

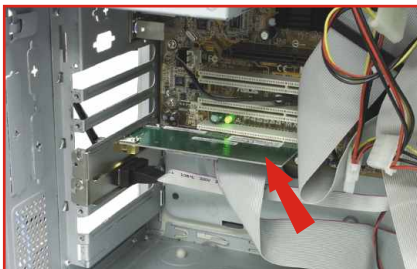
1. Shut down your computer.
2. Insert the PC Card firmly into your notebook PC's open PC Card slot. Only the plastic end-piece should protrude from the slot.
3. Boot up your laptop PC and make sure Windows's Desktop is properly loaded.



If you are installing the TEW-228PI Wireless PCI Card:

Proceed only if you have already completed the steps in Section 2

1. Shut down your computer.
2. Open your computer case to reveal the motherboard and expansion slots.
(Please refer to your computer's user manual if you need help opening the case)
3. Insert the wireless card into one of motherboard's free PCI slots. Press down firmly and evenly on the card until it snaps into place.



4. Screw the PCI card's metal bracket into your case with a standard bracket screw. Attach the included antenna to the connector on the back of your card.



5. Close your computer case, and boot up your computer.

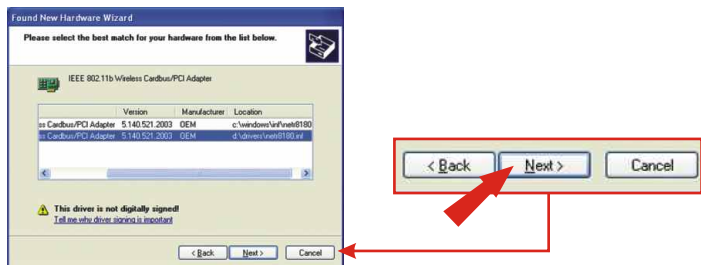
5. Install Drivers

Windows XP

1. After your computer reboots, the “Found New Hardware Wizard” will appear. Verify that **Install the software automatically** is selected and that the TEW-226PC/228PI CD-ROM is in your CD-ROM drive. Then, click **Next**.



2. When you are prompted to choose a driver from a list of compatible drivers, choose the one that is located in the TEW-226PC/228PI CD-ROM's Windows XP folder, and click **Next**.

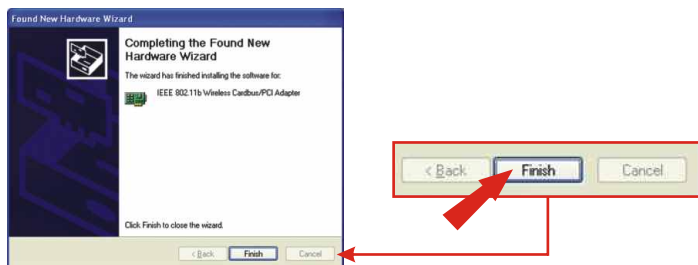


3. A warning message will tell you that the device you're installing has not yet been certified for Windows XP compatibility. Click **Continue Anyway**.

Note: TRENDnet's Wireless Adapter drivers have been fully tested in all supported Windows Operating Systems and have been found to provide assured compatibility.



4. The "Found New Hardware Wizard" will tell you that it has finished installing the software for your IEEE 802.11b Wireless Cardbus/PCI Adapter. Click **Finish**.



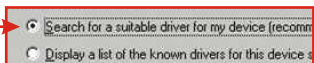
Continue to Section 5 of this Quick Installation Guide to continue configuring your wireless card.

Windows 2000

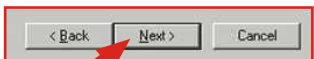
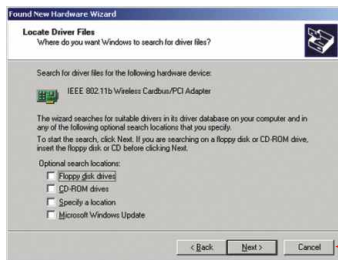
1. After your computer reboots, the "Found New Hardware Wizard" will appear. Click **Next**.



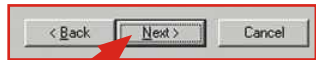
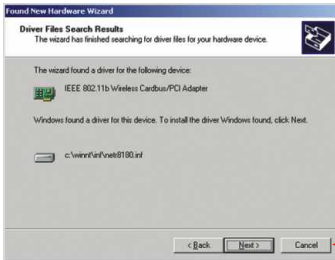
2. Select **Search for a suitable driver for my device**. Click **Next**.



3. Click **Next**.

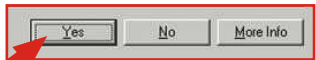


4. Click Next.

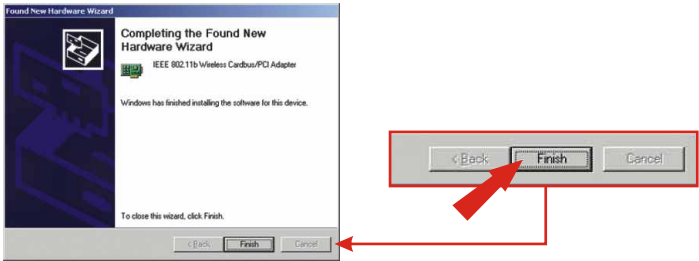


5. A message will tell you that the driver you're about to install “does not contain a digital signature” and will ask you if you want to continue the installation. Click **Yes**.

Note: TRENDnet's Wireless Adapter drivers have been fully tested in all supported Windows Operating Systems and have been found to provide assured compatibility.



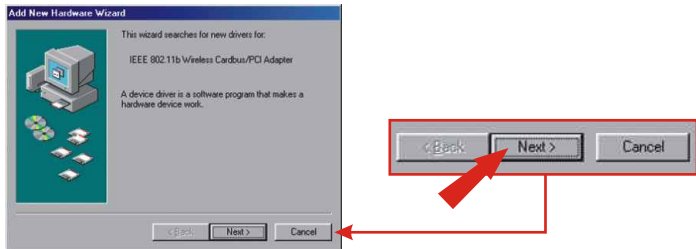
6. The “Found New Hardware Wizard” will tell you that it has finished installing the software for your new device. Click **Finish**.



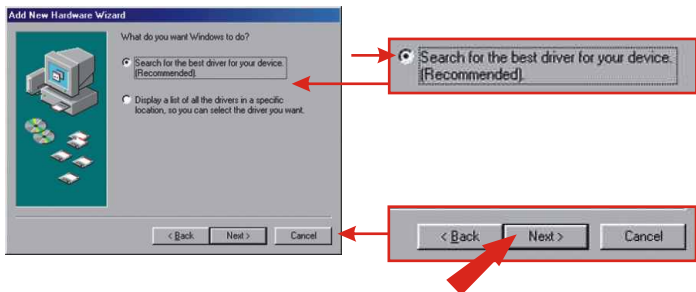
Continue to Section 5 of this Quick Installation Guide to continue configuring your wireless card.

Windows 98SE/ME

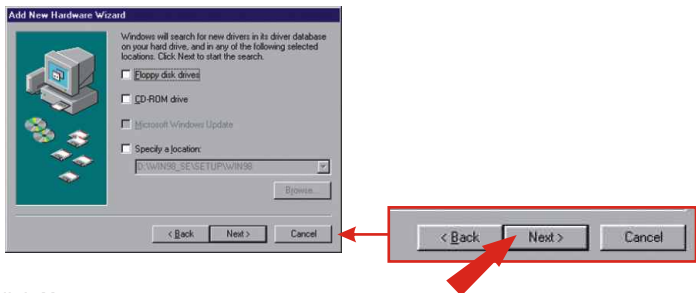
1. After your computer reboots, the “Add New Hardware Wizard” will appear. Click **Next**.



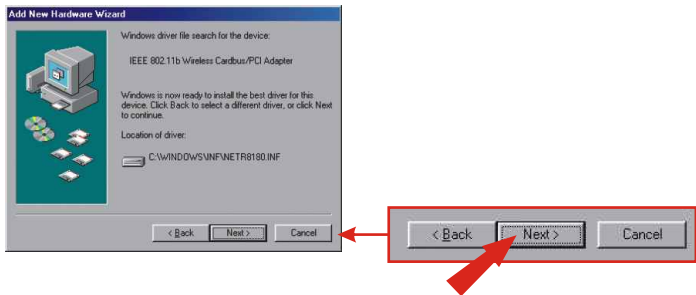
2. Select **Search for the best driver for your device.** Click **Next**.



3. Click **Next**.



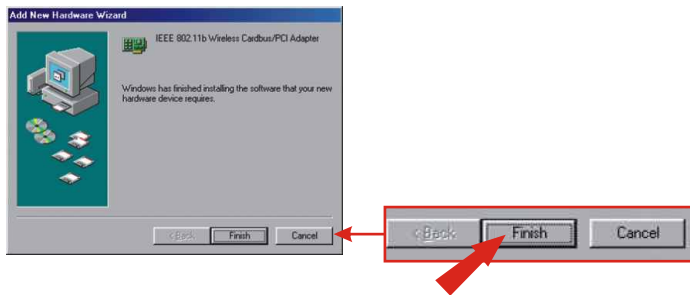
4. Click **Next**.



5. You may be asked to insert your Windows 98/ME CD-ROM. If this is the case, insert your Windows 98/ ME CD-ROM, and click **OK**.



6. The “Add New Hardware Wizard” will tell you that it has finished installing the software for your IEEE 802.11b Wireless Cardbus/PCI Adapter. Click **Finish**.



7. Windows will ask you if you want to restart your computer. Click **Yes**.



After the computer restarts, continue to Section 5 of this Quick Installation Guide to continue configuring your wireless card.

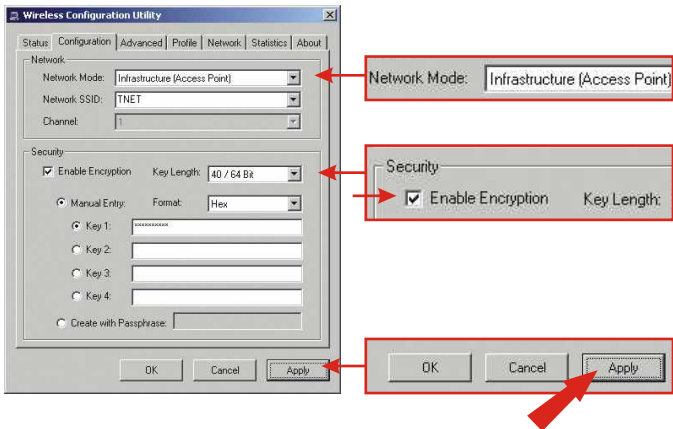
6. Wireless Configuration

Infrastructure Mode (PC-to-Access Point connection)

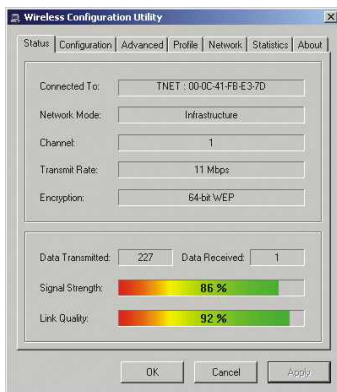
1. Double-click the wireless computer icon in your system tray (next to the clock in the bottom right corner of your screen).



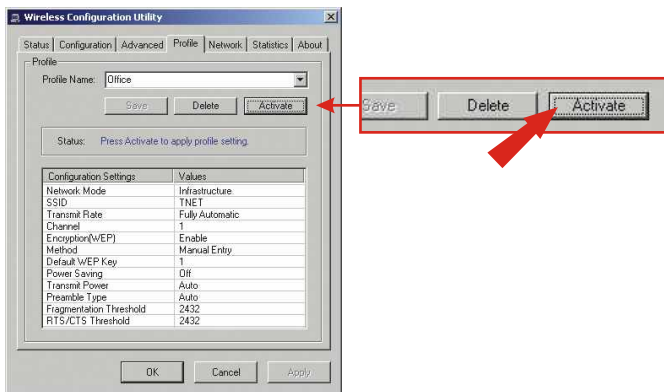
2. Click the Configuration Tab. Select **Infrastructure (Access Point)** as the Network Mode.
3. Select a Network SSID that matches the SSID of your Access Point. (If you are unsure of your Access Point's SSID, refer to your Access Point settings) Click **Apply**.
4. (Optional) Select the **Enable Encryption** option, and enter a WEP key of your choice.
5. Click the **Apply** button to complete the setup.



6. If you see connection information under the Status tab, your Wireless Adapter's configuration is complete.



7. To save the current settings as a profile, click the profile tab. Input a Profile Name, click **Save**, and then click **Activate**.



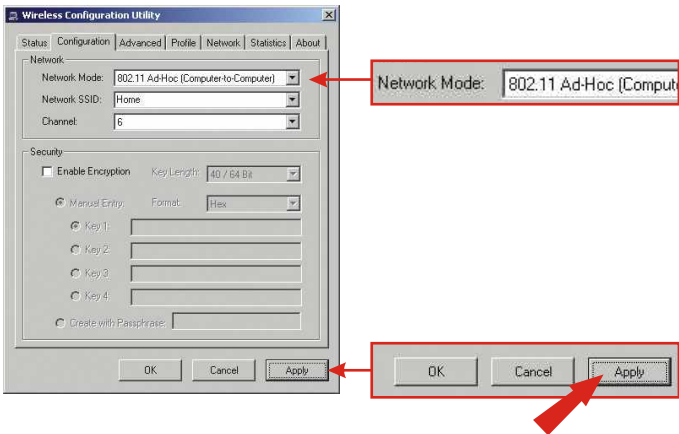
Configuration of the Wireless Adapter is now complete.

Ad-Hoc Mode (Computer-to-Computer connection)

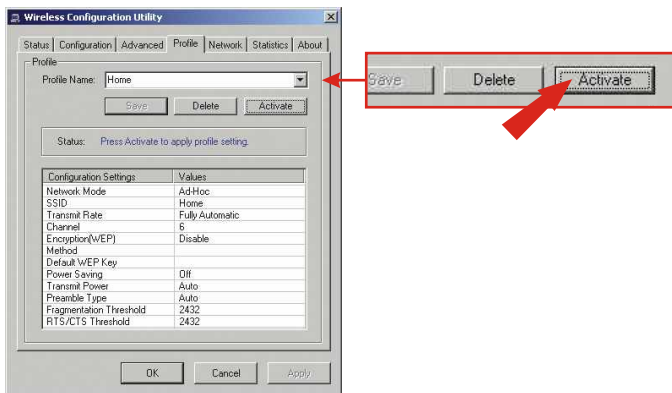
1. Double-click the wireless computer icon in your system tray (next to the clock in the bottom right corner of your screen).



2. Click the Configuration Tab. Select **802.11 Ad-Hoc (Computer to Computer)** as the Network Mode.
3. Select a Network SSID that matches the SSID of the wireless card you will be connecting to. (If you are unsure of your other wireless card's SSID, refer to that card's settings)
4. Because you are configuring an Ad-Hoc network, you must select a Channel. It is recommended that you select a channel number from 1-11. Click **Apply**.
5. On the Status window; if you see connection information, your Wireless Adapter is configured.



6. To save the current settings as a profile, click the profile tab. Input a Profile Name, click **Save**, and click **Activate**.



Configuration of the Wireless Adapter is now complete.

Troubleshooting

Q1. I completed all the steps in the quick installation guide, but my card isn't connecting to my wireless router. What should I do?

A1. You should first verify that the Network SSID matches your wireless router or access point's SSID. If they already match, you should check your TCP/IP properties to ensure that Obtain an IP address automatically is selected. Refer to your Windows User's Manual if you are unable to locate your TCP/IP properties.

Q2. Windows is unable to recognize my hardware. What should I do?

A2. Make sure your computer meets the minimum requirements as specified in Section 1 of this quick installation guide. Also, you must install the wireless configuration utility (as described in Section 2) BEFORE you physically install your network card. Lastly, you may consider moving the card to a different PCI/PC Card Slot.

Q3. I cannot open the wireless configuration utility. What should I do?

A3. Go to your device manager (control panel system) to make sure the adapter is installed properly. If you see a networking device with a yellow question mark or exclamation point, you will need to reinstall the device and/or the drivers.

If you still encounter problems, please refer to the User's Guide CD-ROM or contact technical support.

Certifications

This equipment has been tested and found to comply with Part 15 of the FCC Rules. Operation is subject to the following two conditions:

- (1) This device may not cause harmful interference.
- (2) This device must accept any interference received.
Including interference that may cause undesired operation.

This equipment is in compliance with the requirements of the following regulations: EN 55 022: CLASS B





TRENDware, USA

What's Next in Networking

Product Warranty Registration

Please take a moment to register your product online.
Go to TRENDware's website at <http://www.TRENDNET.com>

TRENDnet Technical Support

US/Canada Support Center

Contact

Telephone: 1(310) 626-6252

Fax: 1(310) 626-6267

Email: support@trendnet.com

Tech Support Hours

7:30am - 6:00pm Pacific Standard Time
Monday - Friday

European Support Center

Contact**Telephone**

Deutsch : +49 (0) 6331 / 268-460

Français : +49 (0) 6331 / 268-461

Español : +49 (0) 6331 / 268-462

English : +49 (0) 6331 / 268-463

Italiano : +49 (0) 6331 / 268-464

Dutch : +49 (0) 6331 / 268-465

Fax: +49 (0) 6331 / 268-466

Tech Support Hours

8:00am - 6:00pm Middle European Time
Monday - Friday

TRENDware International, Inc.

3135 Kashiwa Street. Torrance, CA 90505

<http://www.TRENDNET.com>