



TE100-S81FX **7-port 10/100Base-TX and 1-port 100Base-FX Mini Fiber Switch**

TRENDnet's TE100-S81FX 7-port 10/100Base-TX and 1-port 100Base-FX Switch is best for campus and networks that require greater distance than the standard 100 meters copper wire. It offers reliable, easy-to-use, and affordable LAN solution to meet an immediate network bandwidth demand. With unique Fast Ethernet Switching ASIC, the TE100-S81FX delivers the power of 100Mbps fiber switching at a very economical price. The compact size is ideal for wall-mounting or desktop. The fiber port accommodates multimode fiber optic cable with SC type connector. Installation and operation involves simply plugging in cabling and connecting power.



FEATURES

- ...→ 7 10/100Mbps auto-negotiating and auto-sensing RJ45 ports
- ...→ 1 fiber optic port for 100Base-FX multimode SC type connector
- ...→ Supports half- and full-duplex modes on fiber optic port (selector-switch controlled)
- ...→ Supports store-and-forward switching method
- ...→ Plug and Play
- ...→ Address filtering on all ports
- ...→ Front panel LEDs for switch operation status and troubleshooting
- ...→ True non-blocking switch architecture
- ...→ 256KByte RAM buffer
- ...→ Supports 8K MAC address entries per device
- ...→ Wall-mountable compact size
- ...→ 5 Year warranty

BENEFITS

- ...→ **Performance:**
Each port has 200Mbps bandwidth at full-duplex mode.
- ...→ **Flexibility:**
The TE100-S81FX seamlessly connects 10/100Base-TX and 100Base-FX networks together.
- ...→ **Expandability:**
Offers FX fiber port for network expansion up to 2 Km.
- ...→ **Compatibility:**
Support all major network operating systems.
- ...→ **Reliability:**
TRENDnet's fiber components are dependable with 5-year warranty.

TE100-S81FX

7-port 10/100Base-TX and 1-port 100Base-FX Mini Fiber Switch

SPECIFICATIONS

Standards:

- IEEE 802.3 10Base-T, IEEE 802.3u 100Base-TX/FX

Cable:

- 10Base-T 2-pair UTP CAT 3, 4, 5 up to 100 meters (328 ft.),
- 100Base-TX 2-pair UTP CAT 5 up to 100 meters (328 ft.),
- 100Base-FX 62.5/125 multi-mode fiber optics cable up to 2,000 meters (6,560 ft.)

Switching Method:

- Store-and-forward

Data Forwarding Rate:

- 14,880pps for 10Mbps,
- 148,800pps for 100Mbps

Power Supply:

- 5V DC, 2.4A External power supply

Power Consumption:

- 12 Watts

Diagnostic LEDs:

- Per Unit: Power; Per TX
- Port: 10/100 Link/Activity, Full-Duplex /Collision;
- Per FX Port: 100Link/Activity, Full-Duplex /Collision

Temperature:

- Operating: 0° to 50°C (32° to 122°F)
- Storage: -10° to 70° C (14° to 158°F)

Humidity:

- Operating: 10% to 90% non-condensing
- Storage: 5% to 90% non-condensing

Dimensions:

- 171 x 100 x 28 mm
(6.73 x 3.94 x 1.10 inches)

Weight:

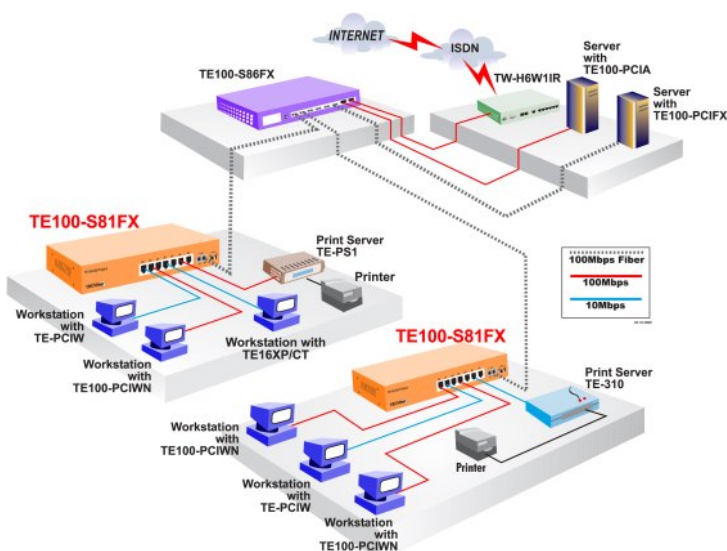
- 482 grams (17 Oz.)

Certifications:

- FCC, CE, VCCI



NETWORKING SOLUTIONS



To Order Please Call:
1-888-326-6061

PRODUCT INFORMATION

- **TE100-S81FX:** 7-port 10/100Base-TX and 1-port 100Base-FX Mini Switch with SC Connector
- **TE100-S86FX:** 2-port 10/100Base-TX and 6-port 100Base-FX Switch with SC Connector
- **TE100-S88FX:** 8-port 100Base-FX Switch with SC Connector
- **TFC-100MSC:** 100Base-TX to 100Base-FX SC-type Converter
- **TE100-PCIFX:** 100Base-FX Fast Ethernet Adapter for PCI

ORDERING INFORMATION

TRENDware International, Inc.
3135 Kashiwa Street
Torrance, CA. 90505. USA
Tel: 310-891-1100
Fax: 310-891-1111
Web: www.TRENDNET.com
Email: sales@trendware.com

