

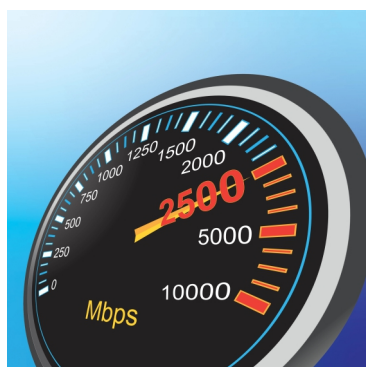


16-Port 2.5G Desktop Switch

TEG-S3160 (V2)

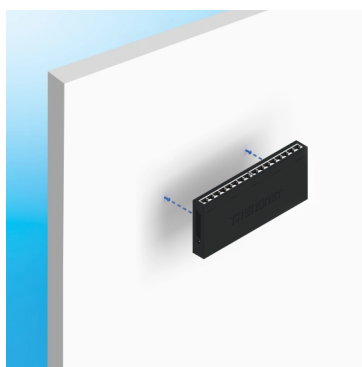
- 16 x 2.5G RJ45 ports
- Compatible with existing Cat5e or better cabling
- Fanless design eliminates noise
- Wall mountable for installation flexibility
- 80Gbps switching capacity
- IEEE 802.3bz (2.5G) compliant
- Lifetime Warranty
- NDAA / TAA compliant (U.S. and Canada only)

Expand your network's bandwidth and reduce digital bottlenecks with TRENDnet's Unmanaged 2.5G Switches. These 2.5G network switches come equipped with 2.5GBASE-T RJ45 ports that provide ultra-fast speeds capable of up to 2.5Gbps over your existing Cat5e or better cabling. Each high-speed 2.5G switch features a durable metal enclosure and can be mounted to the wall for setup flexibility. The fanless design lowers energy consumption and eliminates operating noise. The sturdy metal housing is well-suited for wall mount installations. TRENDnet's reliable 2.5G switches are cost-effective solutions to increase your network's throughput.



2.5G Ports

Equipped with 2.5GBASE-T RJ-45 ports that provide ultra-fast speeds capable of up to 2.5Gbps over existing Cat5e or better cabling.



Wall Mountable

The 2.5G switch features a durable metal housing with a convenient wall mountable design for greater installation flexibility.



Fanless

The fanless design of this 16-port 2.5G switch lowers energy consumption costs and eliminates operating noise.

FEATURES



Easy Installation

No configuration needed, simply connect network devices to the 16-port multi-gig switch



2.5G Ports

This 16-port multi-gigabit switch is equipped with 2.5GBASE-T RJ-45 ports that provide ultra-fast speeds capable of up to 2.5Gbps over existing Cat5e or better cabling



Switching Capacity

80Gbps switching capacity



Fanless

Fanless design on the 16-port 2.5G switch lowers energy consumption and eliminates operating noise



Housing Design

Sturdy desktop metal housing



Rear Facing Ports

Hide cable clutter with rear facing ports on your desktop



Wall Mountable

The 16-port 2.5G switch features a convenient wall mountable design for greater installation flexibility



Jumbo Frame

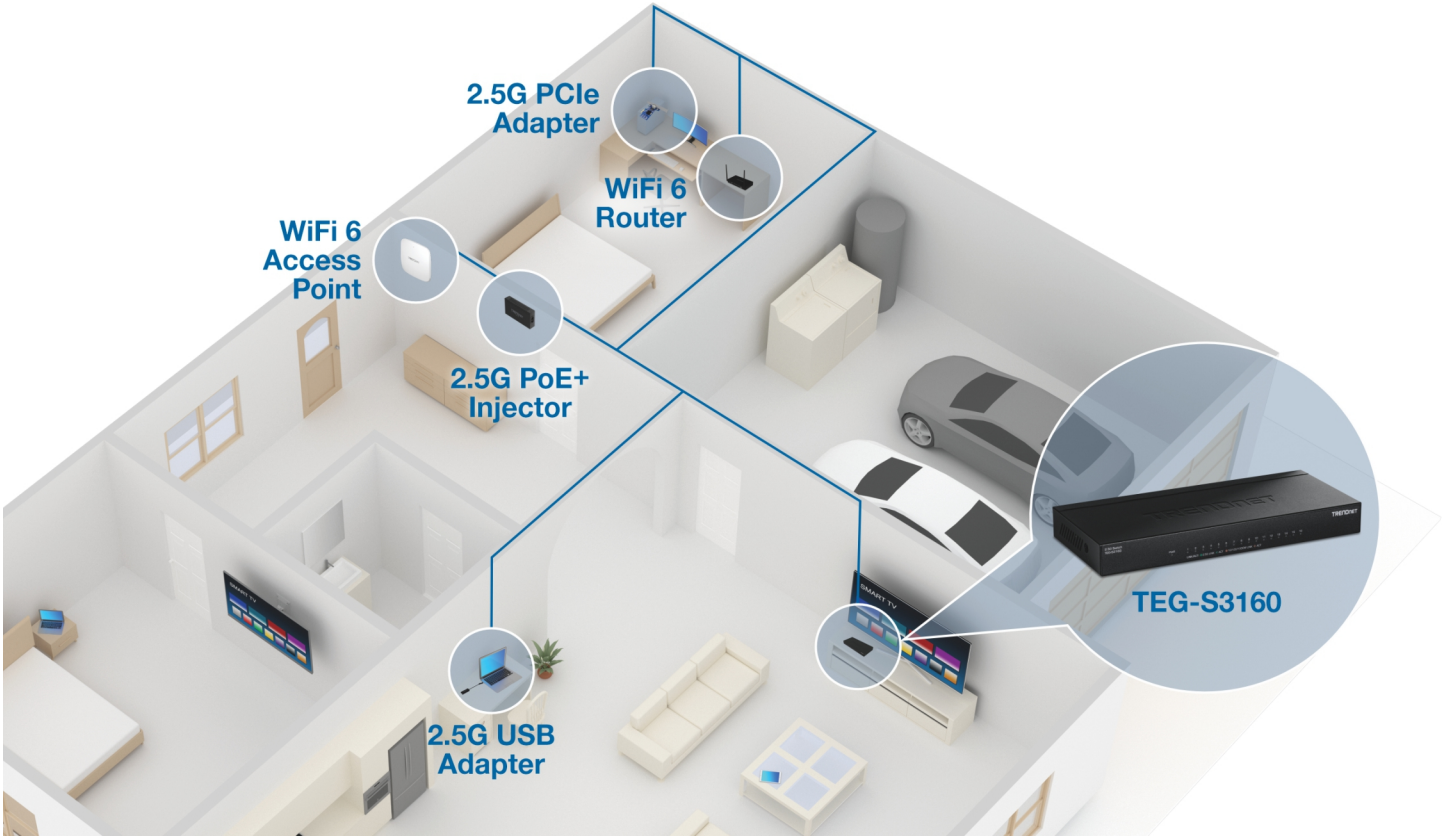
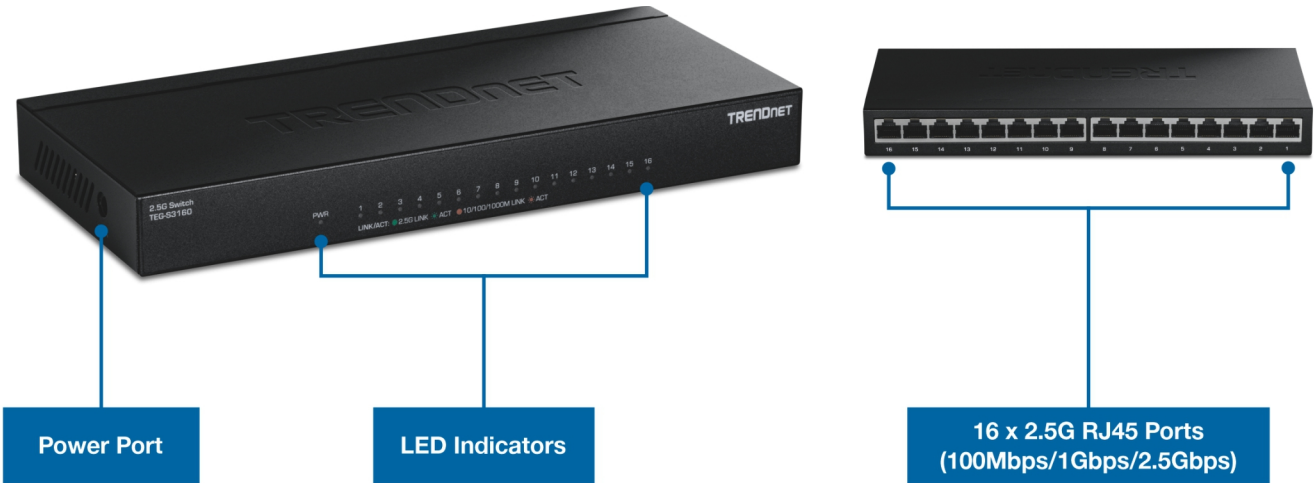
Sends larger packets, or Jumbo Frames (up to 10KB), for increased performance



LED Indicators

LED indicators on this 16-port 2.5G switch conveniently convey port status

NETWORKING SOLUTION



SPECIFICATIONS

Standards

- IEEE 802.3
- IEEE 802.3u
- IEEE 802.3x
- IEEE 802.3z
- IEEE 802.3ab
- IEEE 802.3az
- IEEE 802.3bz

Device Interface

- 16 x 2.5G RJ-45 ports (100Mbps/1Gbps/2.5Gbps)
- LED indicators

Performance

- Switching Capacity: 80Gbps
- RAM Buffer: 1MB
- Jumbo Frames: 10KB
- MAC Address Table: 16K entries
- Forwarding Rate: 59.52Mpps (64-byte packet size)

Special Features

- Wall mountable
- VLAN Passthrough

Power

- Input: 90 – 264V AC, 47/63 Hz
- Output: 12V DC, 2A
- Max. Consumption: 12W

Fan/Acoustics

- Fanless design

MTBF

- 223,000 hours

Operating Temperature

- 0° – 40° C (32° – 104° F)

Operating Humidity

- Max. 90% non-condensing

Dimensions (L x W x H)

- 240 x 105 x 27mm (9.44 x 4.13 x 1.06 in.)

Weight

- 694.56g (1.53 oz.)

Certifications

- FCC
- CE

Warranty

- Lifetime Warranty

Package Contents

- TEG-S3160
- Rackmount kit
- Power adapter (12V DC, 2A)

All references to speed are for comparison purposes only. Product specifications, size, and shape are subject to change without notice, and actual product appearance may differ from that depicted herein.

TRENDnet offers a lifetime warranty for all of its metal-enclosed network switches that have been purchased in the United States/Canada on or after 1/1/2015. Cooling fan and internal power supply carry a one-year warranty.