



Quick Installation Guide



TEG-S3000i

Table of Contents

Русский	1
1. Что нужно сделать в самом начале	1
2. Модули шасси	2
3. Порядок подключения	3
4. Эксплуатация шасси	4
Troubleshooting	6

1. Подготовка к монтажу



Содержимое упаковки

- TEG-S3000i
- Руководство по быстрой установке
- CD-ROM-диск
- Сетевой провод
- Кабель RS-232

Системные требования

1. Сетевые станции с сетевыми картами
2. TCP/IP-протокол, установленный на всех рабочих станциях
3. Веб-браузер типа Internet Explorer или Netscape Navigator
4. Кабель RJ-45 Network Patch для подключения рабочих станций к устройству TEG-S3000i

Back Panel Optional Modules
(Gigabit Slot)

TEG-S3M2CG TEG-S3M2MG TEG-S3M11CF



**3-Slot Gigabit Layer 2
Managed Chassis**
(TEG-S3000i)



Front Panel Optional Modules
(100Mbps Slots)



TEG-S3M8FX TEG-S3M8TX TEG-S3M8S15

2. Модули шасси

TRENDnet предлагает эксклюзивную линейку модулей с удобной и масштабируемой конфигурацией. Любой из нижеприведенных модулей легко интегрируется с имеющейся сетевой топологией.

<p>TEG-S3M8TX 8-портовый 10/100 Мбит/с RJ-45 Модуль</p>	
<p>8-портовый многомодовый волоконно-оптический модуль TEG-S3M8FX, тип 100Base-FX SC</p>	
<p>8-портовый одномодовый волоконно-оптический модуль TEG-S3M8S15, тип 100Base-FX SC</p>	
<p>2-портовый модуль TEG-S3M2CG Copper Gigabit 10/100/1000 Мбит/с</p>	
<p>2-портовый модуль TEG-S3M2MG, гнездо 1000Base Mini-GBIC</p>	
<p>1-портовый волоконно-оптический модуль TEG-S3M11CF Copper Gigabit 10/100/1000 Мбит/с и 1-портовый волоконно-оптический модуль 1000Base-SX</p>	

3. Порядок подключения

В данном случае используется устройство TEG-S3M8TX. Для подключения устройства TEG-S3000i к своей основной сети используйте соответствующие кабели (т.е. волоконно-оптические или медные).

1. При использовании модулей, поддерживающих скорость 10/100 Мбит/с, отверните планшайбы спереди устройства TEG-S3000i. При использовании модулей Gigabit отверните планшайбу сзади устройства TEG-S3000i.

2. Плавно задвиньте модуль и прижмите его до упора в шасси. После фиксации модуля затяните винты с накатанной головкой.

3. Присоедините сетевой провод к тыльной стороне устройства TEG-S3000i.



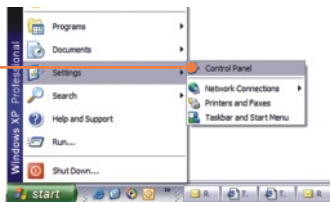
4. Присоедините сетевой кабель к передней части коммутатора и своему компьютеру.

5. Включите устройство TEG-S3000i.

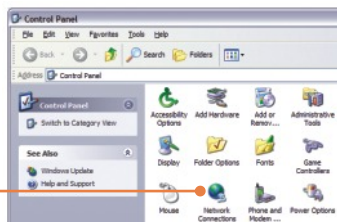
6. Убедитесь в том, что индикатор **PWR** постоянно горит зеленым цветом.

4. Эксплуатация шасси

1. Выберите **Пуск** → **Настройки** → **Панель управления**.



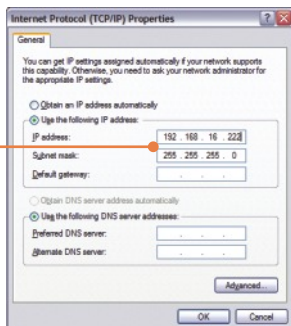
2. Дважды щелкните по значку **Сетевые подключения**.



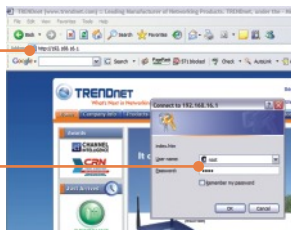
3. Правой кнопкой мыши щелкните по значку **Подключение по локальной сети**, затем по значку **Свойства**.



4. Щелкните по закладке **Общие сведения** и затем **Свойства**. Выберите **Internet Protocol (TCP/IP)** и затем **Свойства**. Измените IP-адрес на **192.168.16.222** и щелкните по кнопке **ОК**, чтобы изменения были приняты.

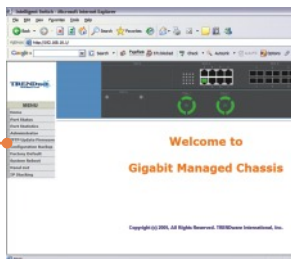


5. Откройте свой веб-браузер и введите **http://192.168.16.1**, затем нажмите на **Ввод**.



6. Имя пользователя: **root**
Пароль: **root**

7. Выберите необходимую опцию для конфигурации шасси Gigabit Managed Chassis.



Установка завершена.

Примечание: Подробнее о дополнительных возможностях узнайте в Руководстве пользователя.

Q1: How come I cannot see any light from any of my LED's?

A1: Your TEG-S3000i is not getting any power. Make sure that your surge protector or your outlet is getting power and make sure that the AC Power cord is properly connected to your TEG-S3000i.

Q2: I changed my IP settings to 192.168.16.222 to access the switch, but I still cannot get into the Web configuration page. What should I do?

A2: Make sure there is no other network device using the same IP address. Afterwards, consult the User's Guide to access the switch through the Console Port. Once you reach the command line interface, perform a factory reset and try again.

Q3: I performed a factory reset on the TEG-S3000i, but I still cannot access the web configuration page. What should I do?

A3: If you are configuring more than one TEG-S3000i, then it is possible that you are experiencing IP conflict between these two switches. Please configure each switch one at a time, and make sure you assign a unique IP address to each switch.

If you have any questions regarding the TEG-S3000i please contact TRENDnet Technical Support Department.

Certifications

This equipment has been tested and found to comply with FCC and CE Rules. Operation is subject to the following two conditions:

- (1) This device may not cause harmful interference.
- (2) This device must accept any interference received.
Including interference that may cause undesired operation.



Waste electrical and electronic products must not be disposed of with household waste. Please recycle where facilities exist. Check with you Local Authority or Retailer for recycling advice.



NOTE: THE MANUFACTURER IS NOT RESPONSIBLE FOR ANY RADIO OR TV INTERFERENCE CAUSED BY UNAUTHORIZED MODIFICATIONS TO THIS EQUIPMENT. SUCH MODIFICATIONS COULD VOID THE USER'S AUTHORITY TO OPERATE THE EQUIPMENT.

Limited Warranty

TRENDnet warrants its products against defects in material and workmanship, under normal use and service, for the following lengths of time from the date of purchase.

TEG-S3000i - 5-Year Warranty

If a product does not operate as warranted above during the applicable warranty period, TRENDnet shall, at its option and expense, repair the defective product or deliver to customer an equivalent product to replace the defective item. All products that are replaced will become the property of TRENDnet. Replacement products may be new or reconditioned.

TRENDnet shall not be responsible for any software, firmware, information, or memory data of customer contained in, stored on, or integrated with any products returned to TRENDnet pursuant to any warranty.

There are no user serviceable parts inside the product. Do not remove or attempt to service the product through any unauthorized service center. This warranty is voided if (i) the product has been modified or repaired by any unauthorized service center, (ii) the product was subject to accident, abuse, or improper use (iii) the product was subject to conditions more severe than those specified in the manual.

Warranty service may be obtained by contacting TRENDnet office within the applicable warranty period for a Return Material Authorization (RMA) number, accompanied by a copy of the dated proof of the purchase. Products returned to TRENDnet must be pre-authorized by TRENDnet with RMA number marked on the outside of the package, and sent prepaid, insured and packaged appropriately for safe shipment.

WARRANTIES EXCLUSIVE: IF THE TRENDNET PRODUCT DOES NOT OPERATE AS WARRANTED ABOVE, THE CUSTOMER'S SOLE REMEDY SHALL BE, AT TRENDNET'S OPTION, REPAIR OR REPLACEMENT. THE FOREGOING WARRANTIES AND REMEDIES ARE EXCLUSIVE AND ARE IN LIEU OF ALL OTHER WARRANTIES, EXPRESSED OR IMPLIED, EITHER IN FACT OR BY OPERATION OF LAW, STATUTORY OR OTHERWISE, INCLUDING WARRANTIES OF MERCHANTABILITY AND FITNESS FOR A PARTICULAR PURPOSE. TRENDNET NEITHER ASSUMES NOR AUTHORIZES ANY OTHER PERSON TO ASSUME FOR IT ANY OTHER LIABILITY IN CONNECTION WITH THE SALE, INSTALLATION, MAINTENANCE OR USE OF TRENDNET'S PRODUCTS.

TRENDNET SHALL NOT BE LIABLE UNDER THIS WARRANTY IF ITS TESTING AND EXAMINATION DISCLOSE THAT THE ALLEGED DEFECT IN THE PRODUCT DOES NOT EXIST OR WAS CAUSED BY CUSTOMER'S OR ANY THIRD PERSON'S MISUSE, NEGLIGENCE, IMPROPER INSTALLATION OR TESTING, UNAUTHORIZED ATTEMPTS TO REPAIR OR MODIFY, OR ANY OTHER CAUSE BEYOND THE RANGE OF THE INTENDED USE, OR BY ACCIDENT, FIRE, LIGHTNING, OR OTHER HAZARD.

LIMITATION OF LIABILITY: TO THE FULL EXTENT ALLOWED BY LAW TRENDNET ALSO EXCLUDES FOR ITSELF AND ITS SUPPLIERS ANY LIABILITY, WHETHER BASED IN CONTRACT OR TORT (INCLUDING NEGLIGENCE), FOR INCIDENTAL, CONSEQUENTIAL, INDIRECT, SPECIAL, OR PUNITIVE DAMAGES OF ANY KIND, OR FOR LOSS OF REVENUE OR PROFITS, LOSS OF BUSINESS, LOSS OF INFORMATION OR DATA, OR OTHER FINANCIAL LOSS ARISING OUT OF OR IN CONNECTION WITH THE SALE, INSTALLATION, MAINTENANCE, USE, PERFORMANCE, FAILURE, OR INTERRUPTION OF THE POSSIBILITY OF SUCH DAMAGES, AND LIMITS ITS LIABILITY TO REPAIR, REPLACEMENT, OR REFUND OF THE PURCHASE PRICE PAID, AT TRENDNET'S OPTION. THIS DISCLAIMER OF LIABILITY FOR DAMAGES WILL NOT BE AFFECTED IF ANY REMEDY PROVIDED HEREIN SHALL FAIL OF ITS ESSENTIAL PURPOSE.

Governing Law: This Limited Warranty shall be governed by the laws of the state of California.

Note: AC/DC Power Adapter, Cooling Fan, and Power Supply carry 1-Year Warranty



TRENDnet Technical Support

US • Canada

Toll Free Telephone: 1(866) 845-3673
24/7 Tech Support



Europe (Germany • France • Italy • Spain • Switzerland • UK)

Toll Free Telephone: +00800 60 76 76 67
English/Espanol - 24/7
Francais/Deutsch - 11am-8pm, Monday - Friday MET

Worldwide

Telephone: +(31) (0) 20 504 05 35
English/Espanol - 24/7
Francais/Deutsch - 11am-8pm, Monday - Friday MET

Product Warranty Registration

Please take a moment to register your product online.
Go to TRENDnet's website at <http://www.trendnet.com>

TRENDnet
3135 Kashiwa Street
Torrance, CA 90505
USA