

TEG-S224M

22-port 10/100/1000Mbps Management Stackable Fast Ethernet Master Switch

The TEG-S224M is a high-capacity management stackable Fast Ethernet master switch that provides the scalability and flexibility to deploy a cost-effective network environment. The TEG-S224M has three slots. Slot 1 is a 2-port 10/100Base-TX module (switched), which it can be replaced with either a 2-port 100Base-FX (MT-RJ) module (optional) or a 1-port 100Base-FX (SC) module (optional). Slot 2 is dedicated for a 3-port stacking module (optional extension port). Slot 3 provides an optional 1 or 2-port 1000Base-SX (SC) Gigabit Ethernet module. The TEG-S224M stacks with up to three TEG-S224S. Using the optional switched modules, they support a maximum configuration of 94 10/100Mbps Ethernet/Fast Ethernet ports and two Gigabit Ethernet ports.

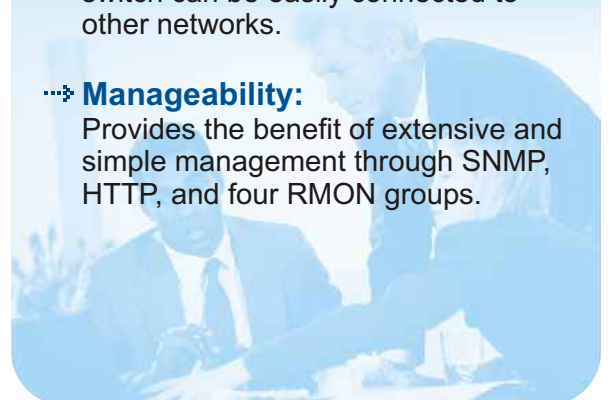


FEATURES

- ...> Complies with IEEE 802.3, IEEE 802.3u, IEEE 802.1p/Q, IEEE 802.3x standards
- ...> 22 N-way auto-negotiation UTP/STP ports
- ...> Port-based VLAN
- ...> Half- and full-duplex modes
- ...> Store-and-forward switching method
- ...> Data filtering eliminates bad packets and runts
- ...> Back-plane bandwidth up to 21.32Gbps
- ...> Supports IEEE 802.1d Spanning Tree Protocol
- ...> 12K MAC address table per device
- ...> IEEE 802.1q VLAN tagging and extended Port/MAC based VLAN
- ...> Integrated flow control
- ...> Port aggregation support
- ...> IGMP snooping - Multimedia Applications support
- ...> Broadcast Storm Filtering monitors the broadcast traffic
- ...> Console or Telnet configuration
- ...> Flash memory for software upgrade
- ...> Web-based network management to monitor and configure the device
- ...> Front panel port status LEDs
- ...> EIA-19 rack mountable
- ...> 5 Year Warranty

BENEFITS

- ...> **Performance:**
The full-duplex Gigabit switch brings high bandwidth with 2000Mbps speed.
- ...> **Expandability:**
Provides up to 94-port 10/100Base-TX ports and two Gigabit ports.
- ...> **Reliability:**
Supports IEEE 802.1p Traffic Prioritization for time-sensitive and mission-critical traffic.
- ...> **Flexibility:**
With different optional modules, the switch can be easily connected to other networks.
- ...> **Manageability:**
Provides the benefit of extensive and simple management through SNMP, HTTP, and four RMON groups.



TEG-S224M

22-port 10/100/1000Mbps Management Stackable Fast Ethernet Master Switch

SPECIFICATIONS

Standards:

- IEEE 802.3, IEEE 802.3u, IEEE 802.1p/Q, IEEE 802.3x, IEEE 802.3z

Protocol:

- CSMA/CD

Switching Method:

- Store-and-forward

Management Protocols:

- SNMP, Web-based Management, RMON, Java Management Application, Telnet, MIBs (MIB-II, Bridge, RMON, and VLAN), Local and remote out-of-band management

LEDs:

- Per Device: Power, Console, Slot, Stacking Port, Gigabit Port
- Per Port: 100M, Link/Act

Cabling:

- CAT 3, 4, 5 UTP/STP RJ-45 for 10Mbps, 100 meter max.;
- CAT 5 UTP/STP RJ-45 for 100Mbps, 100 meter max.;
- multimode SC-type fiber, 2 km max.;
- multimode MT-RJ type fiber, 2 km max.
- For Gigabit connection: Multimode Fiber 50/125 micron-meter, 525 Meter max.;
- Multimode Fiber 62.5/125 micron-meter, 275 Meter max.

Console Port:

- 9 pin-male, D-type EIA-232 port

Power:

- 100-240 VAC, 50/60Hz, 46Watt max.

Dimensions:

- 441 x 367 x 44 mm / 17.3 x 8.0 x 1.7 inches

Weight:

5 kg / 11 lbs.

Temperature:

- Operating: 0° to 50° C / 32° to 122° F

Humidity:

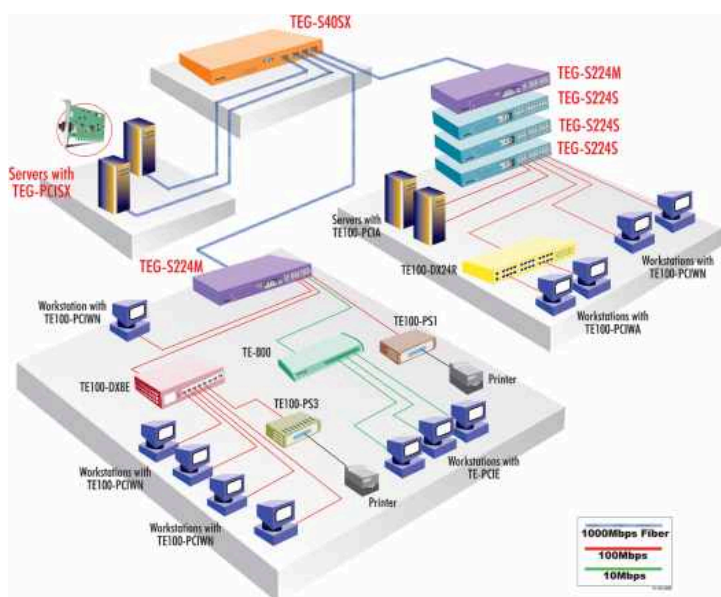
- 5 % to 95 % non-condensing

Certifications:

- FCC, CE, VCCI Class A, C-tick, BCIQ



NETWORKING SOLUTIONS



To Order Please Call:
1-888-326-6061

PRODUCT INFORMATION

- TEG-PCISX 64-bit 1000Base-SX Gigabit Ethernet Adapter with SC Connector
- TEG-S40SX 4-port 1000Base-SX Gigabit Ethernet Switch
- TEG-S224M 22-port 10/100Mbps Management Stackable Master Switch with Optional Gigabit Ethernet
- TEG-S224S 24-port 10/100Mbps Management Stackable Fast Ethernet Slave Switch
- TEG-M101F 1-port 100Base-FX (SC) Module for TEG-S224M and TEG-S224S
- TEG-M102FM 2-port 100Base-FX (MJ-RJ) Module for TEG-S224M and TEG-S224S
- TEG-M3S 3-port SIO Stacking Extension Module for TEG-S224M
- TEG-M1G 1-port 1000Base-SX (SC) Gigabit Ethernet Module for TEG-S224M
- TEG-M2G 2-port 1000Base-SX (SC) Gigabit Ethernet Module for TEG-S224M

ORDERING INFORMATION

TRENDware International, Inc.
3135 Kashiwa Street
Torrance, CA. 90505. USA
Tel: 310-891-1100
Fax: 310-891-1111
Web: www.trendware.com
Email: sales@trendware.com

