
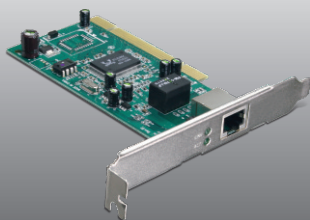


Anleitung zur Schnellinstallation 

TEG-PCITXR
TEG-PCITXRL
3.02

Table of Contents

Deutsch	1
1. Bevor Sie anfangen	1
2. Installation	2
Troubleshooting	5



Packungsinhalt

- TEG-PCITXR/TEG-PCITXRL
- Treiber-CD
- Mehrsprachige Installationsanleitung

Systemanforderungen

- 32-Bit PCI-2.1-Steckplatz
- CD-ROM-Laufwerk
- Prozessor: 1GHz oder schneller (Windows 7) / 800MHz oder schneller (Windows Vista) / 300MHz oder schneller (Windows XP/2000/ME/98)
- Speicher: 1GB RAM oder mehr (Windows 7) / 512MB RAM oder mehr (Windows Vista) / 256MB RAM oder mehr (Windows XP/2000/ME/98)
- Windows 7(32/64-bit) / Vista(32/64-bit) / XP(32/64-bit) / 2000/ME/98
- RJ-45-Ethernetkabel

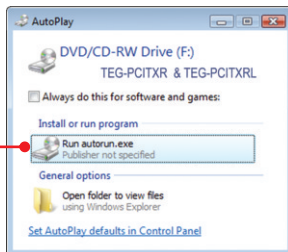
2. Installation

Hinweis:

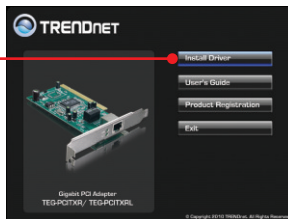
1. Informationen zur Installation der Treiber für Windows 98SE und ME finden Sie in der Bedienungsanleitung auf der Treiber-CD.
2. Verbinden Sie den TEG-PCITXR/TEG-PCITXRL erst dann mit Ihrem Computer, wenn Sie dazu aufgefordert werden.

1. Legen Sie die **Treiber-CD** in das CD-ROM-Laufwerk Ihres Computers (Windows Vista/XP/2000).

2. Klicken Sie auf **Run autorun.exe** (autorun.exe ausführen) (nur Windows Vista)

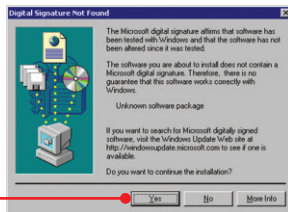


3. Klicken Sie auf **Install Driver** (Treiber installieren) (Windows Vista/XP/2000).



4. Folgen Sie den Anweisungen des **Installationsassistenten** (Windows Vista/XP/2000).

5. Klicken Sie auf **Yes (Ja)** (nur Windows 2000)

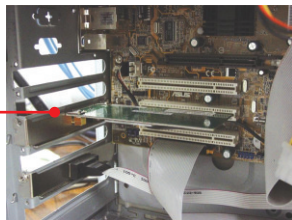


6. Klicken Sie dann auf **Finish** (Fertigstellen).
(Windows Vista/XP/2000).

7. **Fahren** Sie Ihren Computer **herunter** und öffnen Sie das Gehäuse.

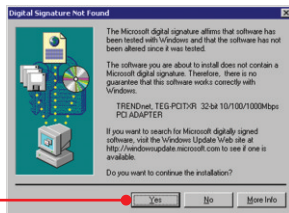


8. Stecken Sie die PCI-Karte fest in einen freien PCI-Karten-Steckplatz. Schalten Sie Ihren Computer wieder ein und warten Sie, bis der Windows-Desktop erscheint.



9. Die Treiber werden automatisch installiert.

10. Klicken Sie auf **Yes** (Ja) (nur Windows 2000).



11. Connect a RJ-45 network cable from the computer to an available Ethernet port on your router or switch.



Die Konfiguration ist jetzt abgeschlossen

Weitere Informationen zu den Konfigurations- und erweiterten Einstellungen der **TEG-PCITXR/TEG-PCITXRL** finden Sie im Abschnitt „Problembehandlung“ der Bedienungsanleitung auf der beiliegenden Dienstprogramm-CD oder auf der Website von TRENDnet unter www.trendnet.com.

Registrieren Sie Ihr Produkt

Nehmen Sie sich bitte einen Moment Zeit und registrieren Sie Ihr Produkt online, so dass Sie unsere umfassenden Support- und Kundendienstleistungen in Anspruch nehmen können: www.trendnet.com/register Vielen Dank für den Kauf eines TRENDnet-Produkts.

1. I inserted the Driver CD-ROM into my computer's CD-ROM drive and the installation menu does not appear automatically. What should I do?

1. For Windows Vista, if the installation menu does not appear automatically, click **Start**, click the **Start Search** box, and type **D:\autorun.exe** where "**D**" in "D:\autorun.exe" is the letter assigned to your CD-ROM Drive, and then press the ENTER key on your keyboard.
2. For Windows 2000/XP, if the installation menu does not appear automatically, click **Start**, click **Run**, and type **D:\autorun** where "**D**" in "D:\autorun.exe" is the letter assigned to your CD-ROM Drive, and then press the ENTER key on your keyboard.

2. Windows doesn't recognize my new hardware. What should I do?

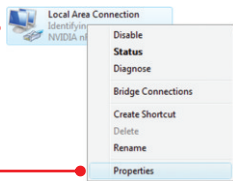
1. Verify that your computer meets the system requirements as specified in **Section 1**.
2. Access your device manager to make sure the adapter is installed properly. If you see a networking device with a yellow question mark or exclamation point, you will need to reinstall the device and/or the drivers. To access the device manager on Windows 2000/XP, right-click **My Computer**, click **Properties**, click the **Hardware** tab, and then click **Device Manager**. To access the device manager on Windows 7/Vista, right-click **Computer**, click **Properties** and then click **Device Manager**.
3. If the device manager fails to recognize the presence of a new networking adapter, verify that the network adapter is firmly seated in the PCI slot.
4. Plug the adapter into another PCI slot on your computer.

3. Windows recognizes my new hardware, but I'm unable to connect to my network. What should I do?

1. Verify that the RJ-45 Ethernet Cable is securely connected from your switch or router to your network adapter.
2. Verify that the LEDs on your network card are lit.
Verify that the TCP/IP settings are set to **Obtain an IP address automatically** (see the steps below).

Windows 7

1. Go into the **Control Panel**, click **Network and Internet**, click **Network and Sharing Center**, click **Change Adapter Settings** and then right-click the **Local Area Connection** icon and then click **Properties**.



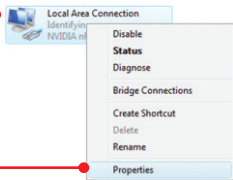
Obtain an IP address automatically
 Use the following IP address:

IP address:
 Subnet mask:
 Default gateway:

2. Click **Internet Protocol Version 4(TCP/IPv4)** and then click **Properties**. Then click on **Obtain an IP address automatically**.

Windows Vista

1. Go into the **Control Panel**, click **Network and Internet**, click **Network and Sharing Center**, click **Manage Network Connections** and then right-click the **Local Area Connection** icon and then click **Properties**.



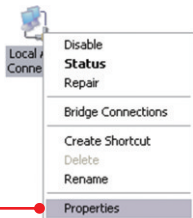
Obtain an IP address automatically
 Use the following IP address:

IP address:
 Subnet mask:
 Default gateway:

2. Click **Internet Protocol Version 4(TCP/IPv4)** and then click **Properties**. Then click on **Obtain an IP address automatically**.

Windows XP/2000/2003Server

1. Go into the **Control Panel**, double-click the **Network Connections** icon and then right-click the **Local Area Connection** icon and then click **Properties**.



Obtain an IP address automatically
 Use the following IP address:

IP address:
 Subnet mask:
 Default gateway:

2. Click **Internet Protocol (TCP/IP)** and then click **Properties**. Then click on **Obtain an IP address automatically**.

4. How do I install the drivers on Windows 98 or ME?

Please refer to the User's Guide included on the Driver CD-ROM.

5. Why am I only getting a network connection speed of 100Mbps instead of 1000Mbps?

1. Check the Ethernet Cable. Make sure you are using CAT-5e or CAT-6 Ethernet Cables. Some CAT-5 cables are not rated to run in Gigabit.
2. Make sure you are connected to a 1000Mbps switch.

If you still encounter problems or have any questions regarding the **TEG-PCITXR_TEG-PCITXRL**, please refer to the User's Guide included on the Driver CD-ROM or contact Trendnet's Technical Support Department.

Certifications

This equipment has been tested and found to comply with FCC and CE Rules.

Operation is subject to the following two conditions:

- (1) This device may not cause harmful interference.
- (2) This device must accept any interference received. Including interference that may cause undesired operation.



Waste electrical and electronic products must not be disposed of with household waste. Please recycle where facilities exist. Check with you Local Authority or Retailer for recycling advice.



NOTE: THE MANUFACTURER IS NOT RESPONSIBLE FOR ANY RADIO OR TV INTERFERENCE CAUSED BY UNAUTHORIZED MODIFICATIONS TO THIS EQUIPMENT. SUCH MODIFICATIONS COULD VOID THE USER'S AUTHORITY TO OPERATE THE EQUIPMENT.

ADVERTENCIA

En todos nuestros equipos se mencionan claramente las características del adaptador de alimentación necesario para su funcionamiento. El uso de un adaptador distinto al mencionado puede producir daños físicos y/o daños al equipo conectado. El adaptador de alimentación debe operar con voltaje y frecuencia de la energía eléctrica domiciliar existente en el país o zona de instalación.



Product Warranty Registration

Please take a moment to register your product online.
Go to TRENDnet's website at <http://www.trendnet.com/register>