



## **TEG-PCITXR** **32-bit 10/100/1000Mbps Copper Gigabit PCI Adapter**

TRENDnet's TEG-PCITXR 32-bit 10/100/1000Mbps Copper Gigabit Ethernet adapter is a high-bandwidth network adapter that auto-senses 10/100/1000Mbps connection speed, half/full-duplex modes, and MDI-X media type. It includes the latest VLAN tagging to efficiently utilize network bandwidth for maximum data throughput. With its 2000Mbps bandwidth capacity, TRENDnet's TEG-PCITXR is ideal for high traffic Power Server and Video-Conferencing Workstation.



### **FEATURES**

- ...→ IEEE 802.3, 802.3u and 802.3ab compliant
- ...→ Support 32-Bit PCI Local Bus Master high-speed operation of Rev. 2.2 specification
- ...→ One RJ-45 port with Auto Sensing of 10Mbps Ethernet, 100Mbps Fast Ethernet, and 1000Mbps Gigabit Ethernet
- ...→ Auto MDI-X medium type detection
- ...→ Supports Full-Duplex mode and doubles the bandwidth to 20/200/2000Mbps
- ...→ Supports Win98/ME/NT4/2000/XP, Linux and Netware
- ...→ Built-in FIFO (8K/64K) buffer reduces overhead of memory transfers
- ...→ Supports Wake-on-LAN for remote wake up
- ...→ Supports IEEE 802.1Q VLAN tagging
- ...→ Plug and Play Installation
- ...→ 5-Year Warranty

### **BENEFITS**

- ...→ **Performance:**  
The full-duplex Gigabit adapter brings high bandwidth with up to 2000Mbps speeds.
- ...→ **User Friendliness:**  
Plug and Play with drivers support all popular network operating systems.
- ...→ **Flexibility:**  
Single RJ-45 connector auto detects 10/100/1000Mbps connection speed, Half/Full duplex mode, and Auto MDI-X medium type.
- ...→ **Cost-Effectiveness:**  
Provides the benefit of Gigabit Ethernet networking with the familiarity of Ethernet that operates in existing 32-bit PCI Bus.



# TEG-PCITXR

## 32-bit 10/100/1000Mbps Copper Gigabit PCI Adapter

### SPECIFICATIONS

#### Standards:

- IEEE 802.3 10Base-T Ethernet, IEEE 802.3u 100Base-TX Fast Ethernet
- IEEE 802.3ab 1000Base-T Gigabit Ethernet, ANSI/IEEE 802.3 Auto-Negotiation
- Protocol: CSMA/CD

#### Data Transfer Rate:

- Ethernet: 10Mbps (Half-Duplex), 20Mbps (Full-Duplex)
- Fast Ethernet: 100Mbps (Half-Duplex), 200Mbps (Full-Duplex)
- Gigabit Ethernet: 1000Mbps (Half-Duplex), 2000Mbps (Full-Duplex)

#### Cabling:

- Ethernet: 2-pair UTP CAT 3,4,5, EIA/ITA-568 100-ohm screened twisted pair (STP)
- Fast Ethernet: 2-pair UTP CAT 5, EIA/TIA-568 100ohm screened twisted pair (STP)
- Gigabit Ethernet: 4-pair UTP Cat 5/Cat 5E (recommend), EIA/TIA-568 100-ohm screened twisted pair (STP)

#### Host Interface:

- 32-bit PCI Rev.2.1/2.2

#### Connector:

- Single RJ-45 UTP/STP, Auto MDI-X

#### Diagnostic LEDs:

- Link, Activity

#### Power Consumption:

- 4.75 watts (max)

#### Driver Support:

- Windows 98/ME/NT4/2000/XP, Linux Kernel 2.2.x/2.4.x, Netware 5.x/6.x

#### Dimensions:

- 120 x 59 x 15 mm (4.7 x 2.3 x 0.6 inch)

#### Weight:

- 68.04g (2.4oz.)

#### Temperature:

- Operating: 0° to 40° C (32° to 104°F)
- Storage: -10° to 70° C (14° to 158°F)

#### Humidity:

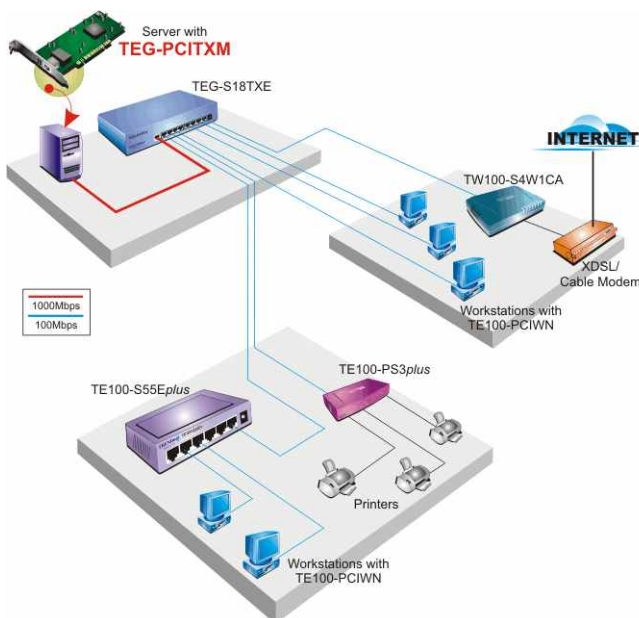
- Operating: 10 % to 90 %
- Storage: 5% ~ 90%

#### Certifications:

- FCC Class B, CE Class B, VCCI Class B



### NETWORKING SOLUTIONS



### RELATED PRODUCT

- ➔ **TEG-PCITXR:**  
32-Bit 10/100/1000Mbps Copper Gigabit PCI Adapter/Realtek Chipset
- ➔ **TEG-S18TXE:**  
9-port 10/100/1000Mbps Copper Gigabit Switch
- ➔ **TE100-PCIWN:**  
10/100Mbps Fast Ethernet PCI Adapter/Realtek Chipset
- ➔ **TE100-S55Eplus:**  
5-port 10/100Mbps NWay Mini Switch
- ➔ **TE100-PS3plus:**  
10/100Mbps Multiple Protocol Direct Print Server (3 Parallel)

### ORDERING INFORMATION

#### TRENDware International, Inc.

3135 Kashiwa Street  
Torrance, CA. 90505. USA  
Tel: 310-891-1100  
Fax: 310-891-1111  
Web: [www.TRENDNET.com](http://www.TRENDNET.com)  
Email: [sales@trendware.com](mailto:sales@trendware.com)



**To Order Please Call:**  
**1-888-326-6061**