

TEG-PCBUSR

**Gigabit Ethernet PC Card Adapter
Quick Installation Guide**

**Guide d'installation rapide de
l'adaptateur de carte PC Ethernet Gigabit**

**Kurzanleitung zur Installation des
Gigabit-Ethernet PC-Karten-Adapters**

**Guía de instalación rápida del
adaptador de Tarjeta PC Ethernet Gigabit**

Version 10.18.04



TRENDnet[®]
TRENDware, USA
What's Next in Networking

Table of Contents

English	1
1. Prepare for Installation	1
2. Product Detail	2
3. Hardware Installation	3
4. Driver Installation	4
5. Verify Installation	14
Troubleshooting	17

English QIG

1. Prepare for Installation

Thank you for purchasing TRENDnet's TEG-PCBUSR Gigabit Ethernet PC Card Adapter.

This guide will help you set up your Gigabit Ethernet PC Card Adapter. Following the installations should be quick and easy. If you run into problems, please refer to the Troubleshooting section. If you need further technical support, please visit www.TRENDNET.com or call technical support by phone.

Verify Package Contents

Please make sure you have everything in the box:



Minimum System Requirements

1. Pentium 266Mhz or faster processor
2. 64MB RAM or more
3. Available 32-bit CardBus Type II slot
4. Windows XP, 2000, ME, 98SE, Microsoft Network Client for DOS (NDIS 2 driver), or NetWare Client for DOS (ODI driver)

2. Product Detail

The Gigabit Ethernet CardBus Adapter has a RJ-45 connector, and two LEDs that indicate data rate and network activity.



3. Hardware Installation

1. Boot up your laptop PC and make sure Windows's Desktop is properly loaded.
2. Insert the TEG-PCBUSR into an available PC Card slot.
3. Make sure the TEG-PCBUSR is inserted all the way to the end of the slot.



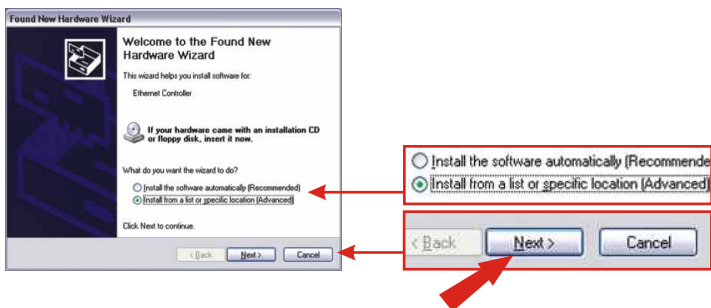
4. Your laptop should emit a beeping sound that indicates newly installed hardware.

4. Driver Installation

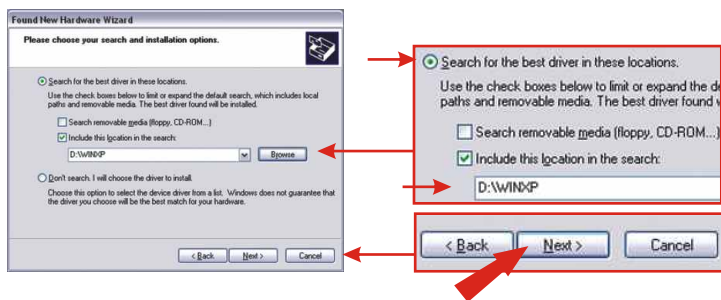
Windows XP

After inserting the TEG-PCBUSR, the “Found New Hardware Wizard” will appear. Windows will automatically detect and ask you to install the Gigabit Ethernet Driver for the TEG-PCBUSR.

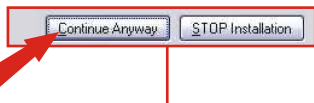
1. Insert the TEG-PCBUSR Driver CD-ROM into your computer's CD-ROM drive.
2. Click **Install from a list or specific location (Advanced)**. Click **Next**.



3. Click **Search for the best driver**, click **location:**, and type **a:\winxp** in the text box. Click **Next**.



4. NOTE: TRENDnet's Gigabit Ethernet PC Card has been fully tested under all supported Windows Operating Systems and has been approved for their functionality; click **Continue Anyway**.



5. Click **Finish**.



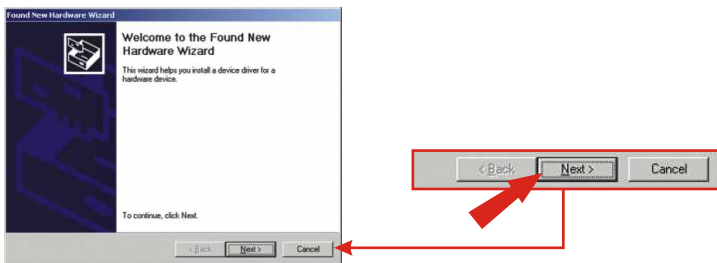
Your driver installation is now complete.

NOTE: If you would like to verify the TEG-PCBUSR has been installed properly for your windows, go to the Verify Installation section.

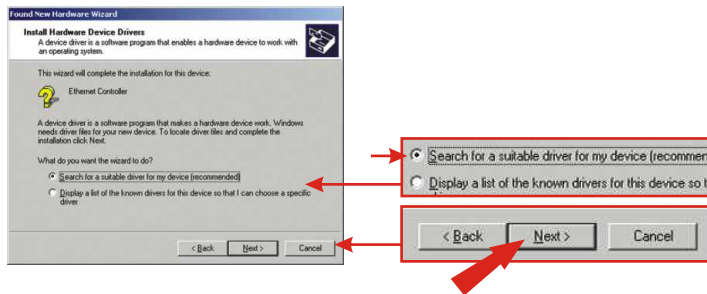
Windows 2000

After inserting the TEG-PCBUSR, the "Found New Hardware Wizard" will appear. Windows will automatically detect and ask you to install the Gigabit Ethernet Driver for the TEG-PCBUSR.

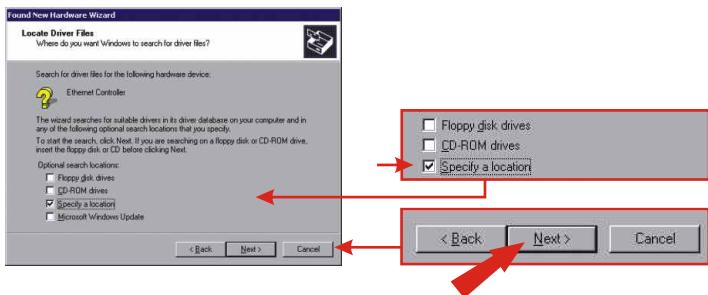
1. Insert the TEG-PCBUSR Driver CD-ROM into your computer's CD-ROM drive.
2. Click **Next**.



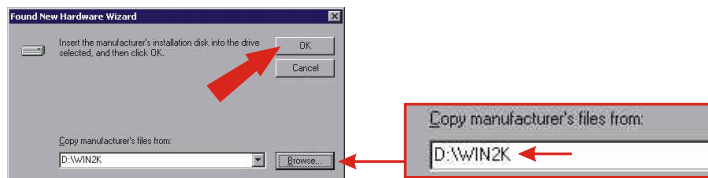
3. Click **Search for a suitable driver for my device (recommended)**. Click **Next**.



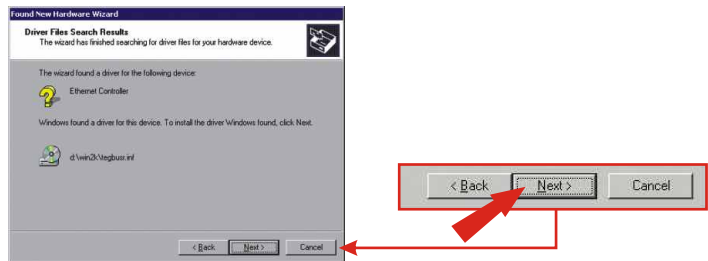
4. Click **Specify a location**. Click **Next**.



5. Type **a:\win2k** in the text box. Click **OK**.



6. Click **Next**.



7. Click Yes.



8. Click Finish.



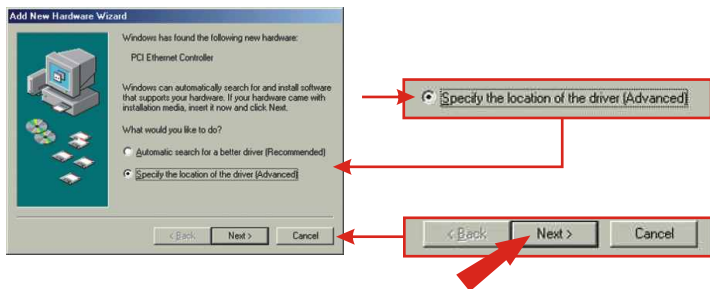
Your driver installation is now complete.

NOTE: If you would like to verify the TEG-PCBUSR has been installed properly for your windows, go to the Verify Installation section.

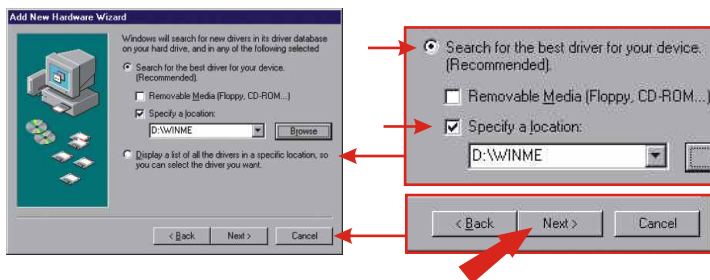
Windows ME

After inserting the TEG-PCBUSR, the "Found New Hardware Wizard" will appear. Windows will automatically detect and ask you to install the Gigabit Ethernet Driver for the TEG-PCBUSR.

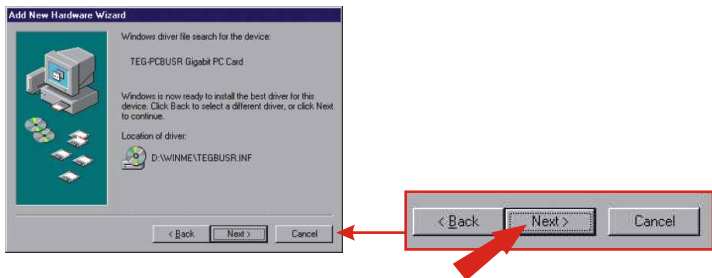
1. Insert the TEG-PCBUSR Driver CD-ROM into your computer's CD-ROM drive.
2. Click **Specify the location of the driver (Advanced)**. Click **Next**.



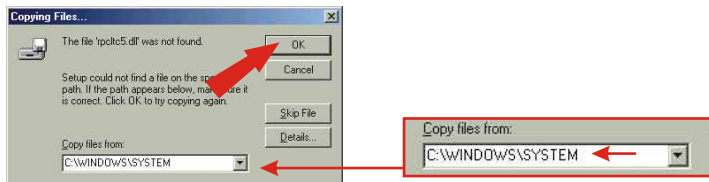
3. Click **Search for the best driver**, click **location:**, and type **a:\WINME** in the text box. Click **Next**.



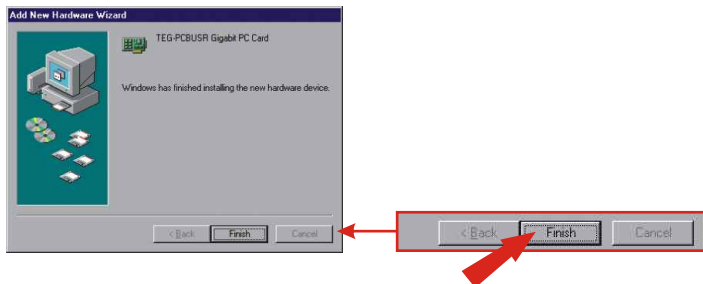
4. Click Next.



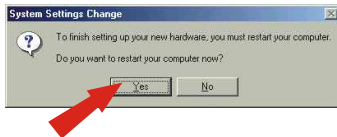
5. If you get this Windows, then type **C:\WINDOWS\SYSTEM** and click OK. If you do not get this Window, go to **step 6**.



6. Click Finish.



7. Click **Yes**.



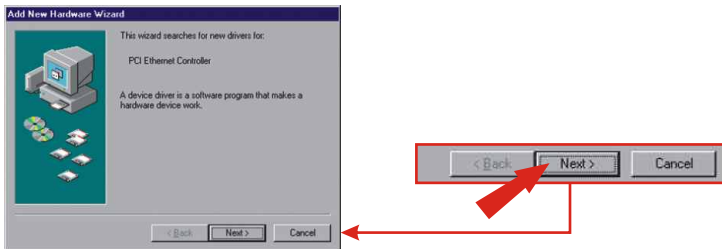
Your driver installation is now complete.

NOTE: If you would like to verify the TEG-PCBUSR has been installed properly for your windows, go to the Verify Installation section.

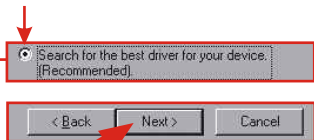
Windows 98SE

After inserting the TEG-PCBUSR, the “Found New Hardware Wizard” will appear. Windows will automatically detect and ask you to install the Gigabit Ethernet Driver for the TEG-PCBUSR.

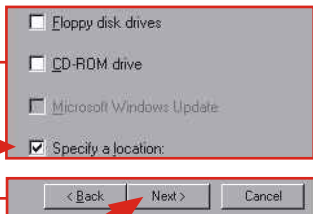
1. Insert the TEG-PCBUSR Driver CD-ROM into your CD-ROM drive.
2. Click **Next**.



3. Click **Search for the best driver for your device (Recommended)**. Click **Next**.



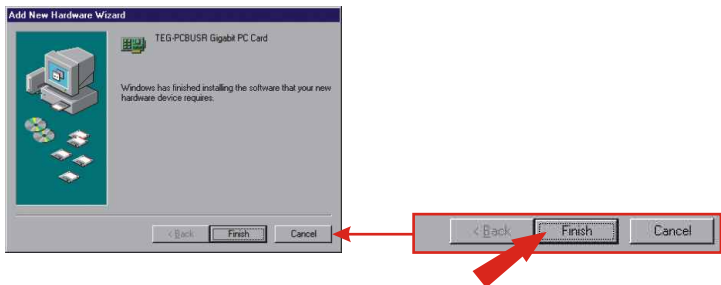
4. Click **Specify a location**, and type in the text box: **A:WIN98SE**. Click **Next**.



5. Click **Next**.



6. Click Finish.



7. Click Yes.



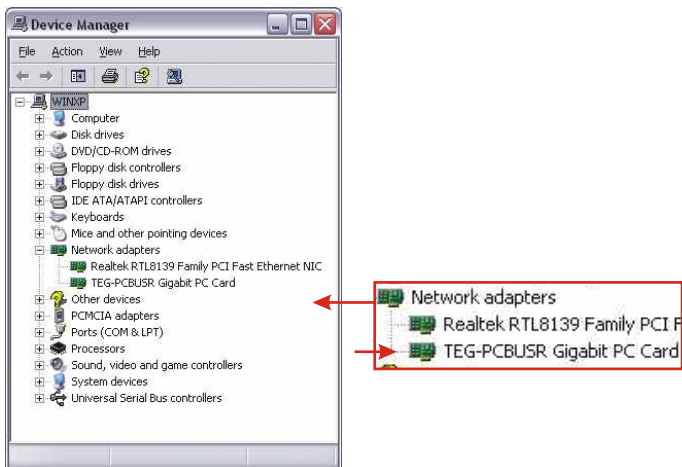
Your driver installation is now complete.

NOTE: If you would like to verify the TEG-PCBUSR has been installed properly for your windows, go to the Verify Installation section.

5. Verify Installation

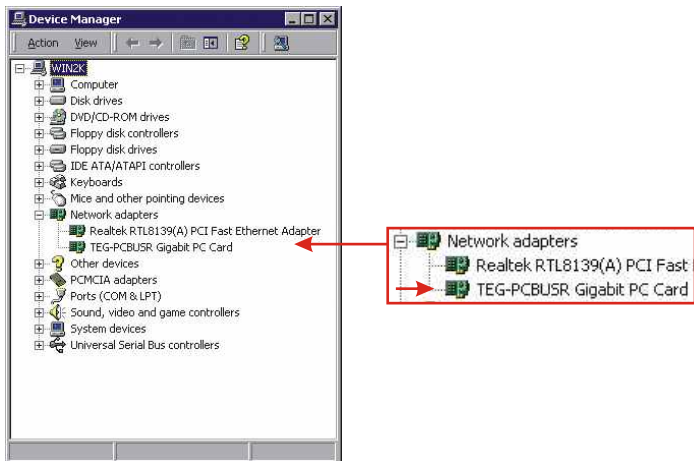
Windows XP

1. Click **Start**, and then click **Control Panel**.
2. Double-click the **System** icon. On the **Hardware** tab, click **Device Manager** button.
3. Expand the “Network adapters” heading to verify that the **TEG-PCBUSR Gigabit PC Card** has been installed.



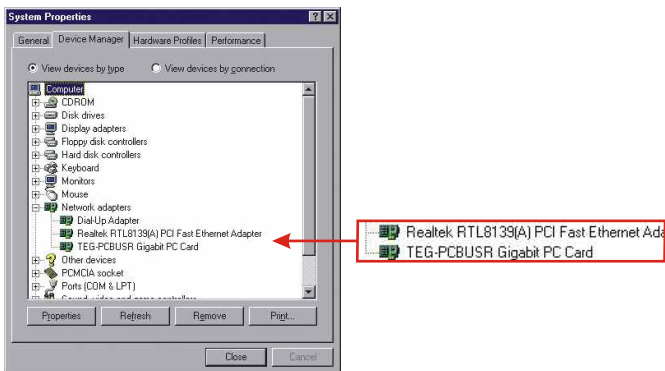
Windows 2000

1. Click **Start**, highlight **Settings**, and then click on **Control Panel**.
2. Double-click the **System** icon. On the **Hardware** tab, click **Device Manager** button.
3. Expand the “Network adapters” heading to verify that the **TEG-PCBUSR Gigabit PC Card** has been installed.



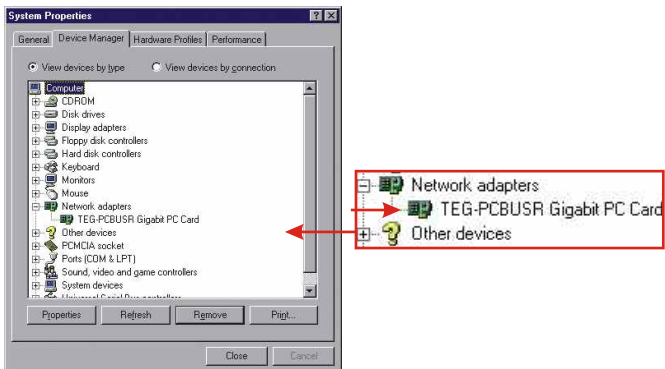
Windows ME

1. Click **Start**, highlight **Settings**, and then click on **Control Panel**.
2. Double-click the **System** icon, and click the **Device Manager** tab.
3. Expand the “Network adapters” heading to verify that the **TEG-PCBUSR Gigabit PC Card** has been installed.



Windows 98SE

1. Click **Start**, highlight **Settings**, and then click on **Control Panel**.
2. Double-click the **System** icon, and click the **Device Manager** tab.
3. Expand the “Network adapters” heading to verify that the **TEG-PCBUSR Gigabit PC Card** has been installed.



Troubleshooting

Q1. Why is the “Speed” LED off, but my “Link/Act” LED on?

A1. If you have installed the TEG-PCBUSR driver and have verified its proper installation, then your computer is connected to a network that operates at 10Mbps. Please consult the User's Guide for LED indicators.

Q2. Why can't my notebook reach 1000 Mbps when I configure my TEG-PCBUSR to 1000Mbps Full Duplex?

A2. Connect your notebook into a Gigabit Switch and see if the “Speed” LED turns green.

Q3. After successful installation of the TEG-PCBUSR Gigabit Ethernet PC Card adapter, I connected a CAT-5 cable into the PC Card's RJ-45 connector, but it doesn't seem to work. What should I do?

A3. Check and verify that the other end of the CAT-5 cable is connected to your switch, router, or RJ-45 jack. After that has been checked and verified, double-check and make sure your TEG-PCBUSR PC Card is inserted all the way to the end of your notebook's slot.

If you have any questions regarding the TEG-PCBUSR Gigabit Ethernet PC Card, please contact Trendware Technical Support Department.

Contact Technical Support

Telephone: +1-310-626-6252
Fax: +1-310-626-6267
Website: www.TRENDNET.com
E-mail: support@trendware.com

Technical Support Hours

7:00AM ~ 6:00PM, Monday through Friday
Pacific Standard Time (except holidays)

Certifications

This equipment has been tested and found to comply with FCC and CE Rules. Operation is subject to the following two conditions:

- (1) This device may not cause harmful interference.
- (2) This device must accept any interference received.
Including interference that may cause undesired operation.





Product Warranty Registration

Please take a moment to register your product online.
Go to TRENDware's website at <http://www.TRENDNET.com>

TRENDware International, Inc.
3135 Kashiwa Street
Torrance, CA 90505

<http://www.TRENDNET.com>