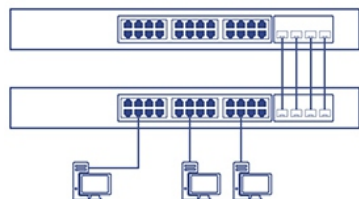


## SFP Dual Wavelength Single Mode LC Module (20km)

TEG-MGBS20D5 (v2.0R)

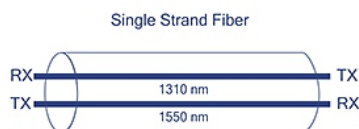
- Must pair with TEG-MGBS20D3 or other compatible module
- Transmission distance of up to 20km (12.42 mi.)
- LC Simplex (single strand) connector type
- Bi-Directional (WDM) SFP Module
- Supports data rates of up to 1.25Gbps
- Supports Transmit: 1310nm / Receive: 1550nm
- Low Electromagnetic Interference (EMI) design
- Compliant with IEEE 802.3z Gigabit Ethernet
- ANSI Fiber Channel compliant
- Small Form-Factor Pluggable (SFP) and Multi-Source Agreement (MSA) compliant
- Low power consumption

TRENDnet's SFP Dual Wavelength Single Mode LC Modules are compatible with standard SFP slots found on network switches and fiber converters. Each single mode SFP transceiver is equipped with a simplex LC fiber connection interface, and supports high-speed data rates up to 1.25Gbps. All TRENDnet SFP fiber modules support connections for reliable, long-distance network applications.



## Fiber Applications

Long-distance fiber networking for manufacturing, business parks, and school campus applications.



## Fiber Mode/Distance

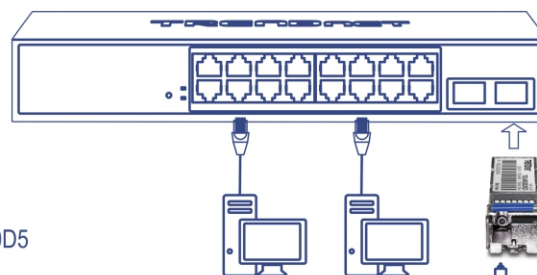
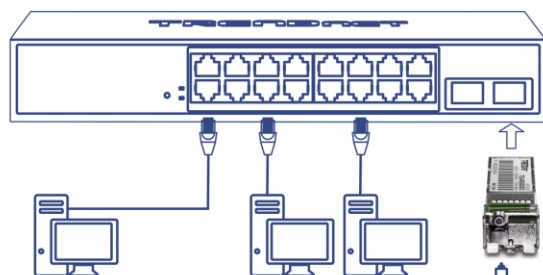
Single mode SFP transceiver spans distances up to 20km (12.42 mi.) at gigabit speeds.



## Compatibility

Hot-pluggable with an MSA compliant SFP slot, and compatible with fiber cables with LC-type simplex connectors.

# NETWORKING SOLUTION



TEG-MGBS20D5 must pair with TEG-MGBS20D3 or other compatible module

TEG-MGBS20D5

TEG-MGBS20D3

Transmission distance of up to 20km (12.42 mi.)

Low Electromagnetic Interference (EMI) design

LC Simplex (single strand) connector

SFP MSA Compliant



## FEATURES



### Fiber Distance

Ideal for long-range networking distances up to 20km (12.42 mi.)



### Hot-Pluggable SFP

Hot-pluggable SFP transceiver compatible with an MSA compliant SFP slot



### Fiber Interface

This single mode fiber BiDi SFP transceiver supports LC-type simplex connector



### Bi-Directional Fiber

Transmit: 1550nm / Receive: 1310nm, pair with TEG-MGBS20D3 or compatible SFP module



### Operating Temperature

Rated for an operating temperature range of 0° - 70° C (-32° - 158° F)

## SPECIFICATIONS

### Standards

- IEEE 802.3
- IEEE 802.3u
- IEEE 802.3z

### Device Interface

- SFP MSA Compliant
- LC Simplex connector

### Data Transfer Rate

- 1.25Gbps

### Wavelength

- TX: 1550nm
- RX: 1310nm

### Optical Output Power

- -9 ~ -3 dBm

### Distance

- 20km (12.42 mi)

### Special Features

- Hot pluggable
- Metal enclosure

### Sensitivity

- -25 dBm

### Power

- Max. Consumption: 0.8W

### Operating Temperature

- 0° – 70° C (32° – 158° F)

### Operating Humidity

- Max. 95% non-condensing

### Dimensions

- 58 x 13.4 x 12.6mm (2.2 x 0.5 x 0.5 in.)

### Weight

- 18g (0.6 oz.)

### Certifications

- CE
- FCC

### Warranty

- 3 year

### Package Contents

- TEG-MGBS20D5
- Quick Installation Guide