

## Quick Installation Guide



**TEG-ECTX**  
**TEG-ECSX**  
H/W: V1

# Table of Contents

English .....	1
1. Before You Start .....	1
2. How to Install .....	2
Troubleshooting .....	6

# 1. Before You Start



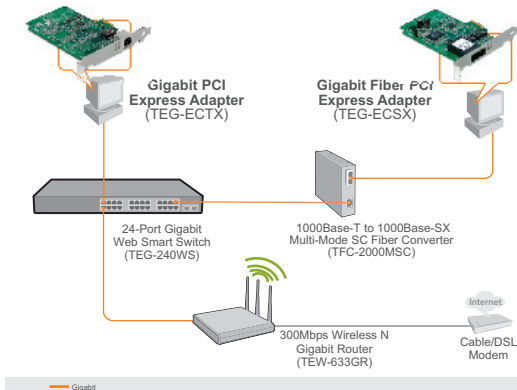
## Package Contents

- TEG-ECTX/TEG-ECSX
- Driver CD-ROM
- Multi-Language Quick Installation Guide

## System Requirements

- PCI Express 1.0a slot
- CD-ROM Drive
- CPU: 300MHz or above / 800MHz or above (Windows Vista)
- Memory: 256MB RAM or above / 512MB RAM or above (Windows Vista)
- Windows 2000/2000 Server/XP(32-/64-bit)/2003 Server/Vista(32-/64-bit)
- RJ-45 Ethernet cable (TEG-ECTX)
- 50/125 $\mu$ m or 62.5/125 $\mu$ m multi-mode fiber cable (TEG-ECSX)
- Recommend fiber converter: TFC-1000MSC or TFC-2000MSC
- Recommend Gigabit Switch: TEG-S5 or TEG-S8

## Application

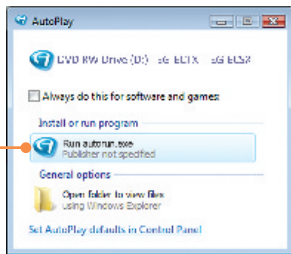


## 2. How to Install

**Note:** Do not connect the TEG-ECTX/TEG-ECSX to your computer until instructed to do so.

1. Insert the **Driver CD-ROM** into your computer's CD-ROM Drive.

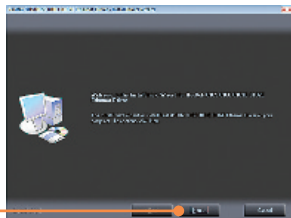
2. Click **Run autorun.exe** (Windows Vista only).



3. Click **Install Driver**, and then click your operating system.



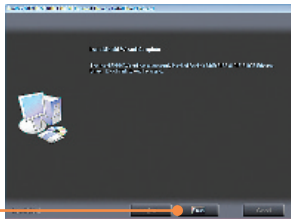
4. Click **Next**. Then follow the **InstallShield Wizard** instructions.



5. Click **OK** (Windows 2000/XP/2003 server only).



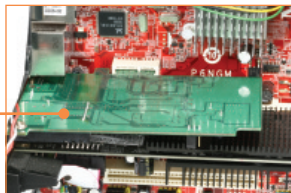
6. Click **Finish**.



7. **Shutdown** your computer and then open your computer's case.



8. Insert the PCIe card firmly into an available PCIe slot, and then turn **ON** the computer and wait until the Windows desktop appears.



9. Drivers will install automatically.

## Connect the TEG-ECTX to your network

1. Connect a RJ-45 network cable from the computer to an available Ethernet port on your Gigabit router or Gigabit switch.



## Connect the TEG-ECSX to your network

1. Connect a SC-type multimode cable from the TEG-ECSX to a Gigabit fiber converter (e.g. TFC-2000MSC).

Note: Make sure the TX and RX cables are reversed on the opposing connection.

2. Connect an Ethernet cable from the Fiber converter to a Gigabit Ethernet port on your switch (e.g. TEG-S5).



**Your installation is now complete.**

For detailed information regarding the TEG-ECTX/TEG-ECSX configuration and advanced settings, please refer to User Guide on the Utility and Driver CD-ROM.

### Register Your Product

To ensure the highest level of customer service and support, please take a moment to register your product Online at: [www.trendnet.com/register](http://www.trendnet.com/register)

Thank you for choosing TRENDnet

**Q1: Windows doesn't recognize my new hardware. What should I do?**

**A1:** First, verify that your computer meets the system requirements as specified in **Section 1**. Second, go to **Start -> Control Panel -> System > Hardware -> Device Manager**. In the list of device types, double-click on **Network Adapters**. If you see the device with a yellow question mark or exclamation point next to it, double-click on it, click on **Drivers** and click **Update Drivers**. Third, if the device manager fails to recognize the presence of a new networking adapter, verify that the network adapter is firmly seated in the PCIE Slot.

**Q2: Windows recognizes my new hardware, but I'm unable to connect to my network. What should I do?**

**A2:** First, verify that the cable is securely connected from your switch or router to your network adapter. Second, verify that the LEDs on your network card are lit. Third, verify that the TCP/IP settings are set to **Obtain an IP address automatically**.

**Q3: Why am I only getting a network connection speed of 100Mbps instead of 1000Mbps for the TEG-ECTX?**

**A3:** First, check the Ethernet Cable. Make sure you are using CAT-5e or CAT-6 Ethernet Cables. Some CAT-5 cables are not rated to run in Gigabit. Second, make sure you are connected to a 1000Mbps switch.

**Q4: I am not getting a network connection when I connect the TEG-ECSX to my network. What should I do?**

**A4:** First, check the fiber cable. Make sure you are using 50/125µm or 62.5/125µm multi-mode fiber cable. Second, make sure that the opposing connection is Gigabit multi-mode fiber connection. The TEG-ECSX will not auto negotiate to 10 or 100Mbps.

**Q5: What is the maximum distance that is supported by the adapters?**

**A5:** TEG-ECTX: 100 Meters. TEG-ECSX: 550 meters.

If you still encounter problems or have any questions regarding the TEG-ECTX/TEG-ECSX, please refer to the User's Guide included on the Driver CD-ROM or contact Trendnet's Technical Support Department.



## Certifications

This equipment has been tested and found to comply with FCC and CE Rules.

Operation is subject to the following two conditions:

- (1) This device may not cause harmful interference.
- (2) This device must accept any interference received. Including interference that may cause undesired operation.



Waste electrical and electronic products must not be disposed of with household waste. Please recycle where facilities exist. Check with you Local Authority or Retailer for recycling advice.



**NOTE:** THE MANUFACTURER IS NOT RESPONSIBLE FOR ANY RADIO OR TV INTERFERENCE CAUSED BY UNAUTHORIZED MODIFICATIONS TO THIS EQUIPMENT. SUCH MODIFICATIONS COULD VOID THE USER'S AUTHORITY TO OPERATE THE EQUIPMENT.

### ADVERTENCIA

En todos nuestros equipos se mencionan claramente las características del adaptador de alimentación necesario para su funcionamiento. El uso de un adaptador distinto al mencionado puede producir daños físicos y/o daños al equipo conectado. El adaptador de alimentación debe operar con voltaje y frecuencia de la energía eléctrica domiciliar existente en el país o zona de instalación.



## Product Warranty Registration

Please take a moment to register your product online.  
Go to TRENDnet's website at <http://www.trendnet.com/register>

**TRENDnet**<sup>®</sup>  
20675 Manhattan Place  
Torrance, CA 90501  
USA