



Quick Installation Guide

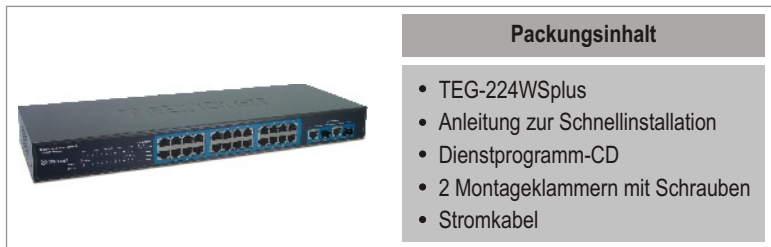


TEG-224WSplus

Table of Contents

Deutsch	1
1. Bevor Sie anfangen	1
2. Installation der Hardware	2
3. Webmanagement-Programm	3
Troubleshooting	6

1. Bevor Sie anfangen

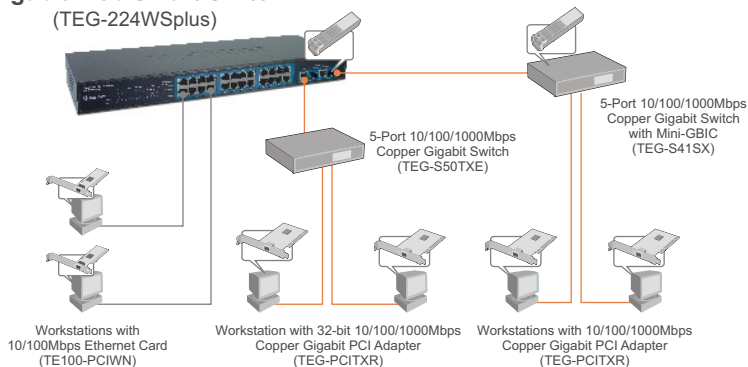


Systemanforderungen

- Webbrowser: Internet Explorer (5.0 oder höher), Netscape Navigator (6.0 oder höher)
- Computer mit installiertem Netzwerkadapter

Anwendung

26-Port 10/100/1000Mbps Gigabit Web Smart Switch (TEG-224WSplus)

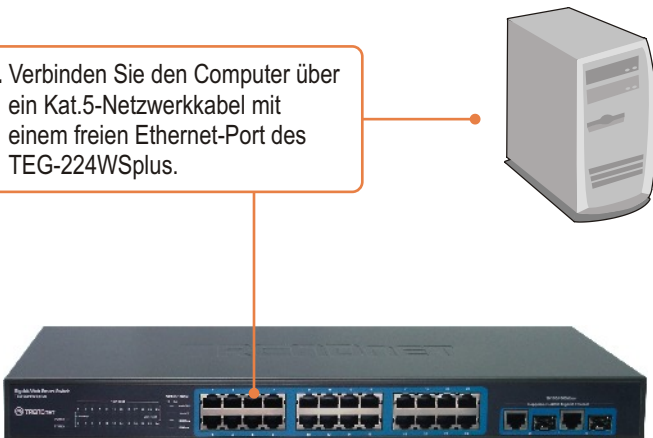


2. Installation der Hardware

1. Schließen Sie das Stromkabel an der Rückseite des TEG-224WSplus an und stecken Sie es in eine Steckdose.



2. Verbinden Sie den Computer über ein Kat.5-Netzwerkkabel mit einem freien Ethernet-Port des TEG-224WSplus.

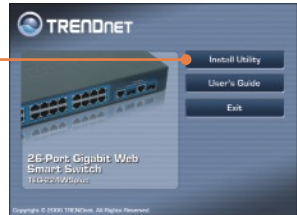


3. Webmanagement-Programm

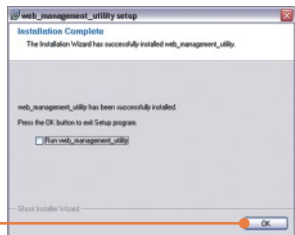
Hinweis: Installieren und verwenden Sie das Webmanagement-Programm, wenn Sie alle webbasierten Switches Ihres Netzwerks problemlos auffinden, IP-Adressen zuweisen, Kennwörter ändern und die Firmware aktualisieren wollen.

Für Benutzer von Windows

1. Legen Sie die **Dienstprogramm-CD** in das CD-ROM-Laufwerk Ihres Computers ein und klicken Sie auf **Install Utility** (Programm installieren).



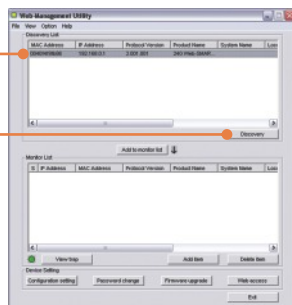
2. Folgen Sie den Anweisungen des **Installationsassistenten**. Klicken Sie auf **OK**.



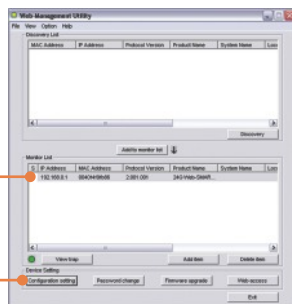
3. Klicken Sie auf **Start > Programs (Programme) > web_management_utility** und dort erneut auf **web_management_utility**



4. Klicken Sie auf **Discovery** (Suche). Doppelklicken Sie in der **Discovery List** (Suchliste) auf den **Switch**.



5. Klicken Sie in der **Monitor List** (Überwachungsliste) auf den **Switch** und dann auf **Configuration setting** (Konfigurationseinstellung).



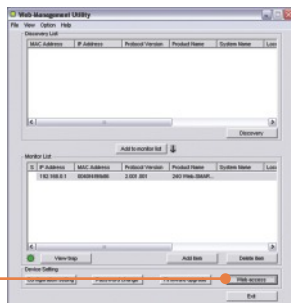
6. Konfigurieren Sie **IP-Adresse**, **Subnet Mask**, **Default Gateway** und **Password** (Kennwort). Klicken Sie auf **Set**



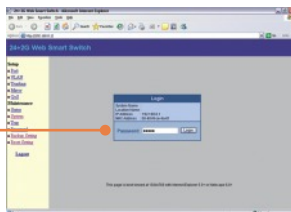
7. Klicken Sie auf **OK**.



8. Klicken Sie auf **Web access** (Webzugriff).



9. Geben Sie Ihr **Password** (Kennwort) ein und klicken Sie dann auf **Login** (Anmelden).



Weitere Informationen zu den Konfigurations- und erweiterten Einstellungen des TEG-224WSplus finden Sie im Abschnitt „Problembehandlung“ der Bedienungsanleitung auf der beiliegenden CD-ROM oder auf der Website von Trendnet unter <http://www.trendnet.com>.

Q1: After connecting the TEG-224WSplus to a power outlet, the LEDs do not turn on.

A1: Check the connection of the power cord to the TEG-224WSplus and the power outlet. Also check that the power outlet is receiving power.

Q2: After installing the Web-Management Utility, I clicked Discovery and the Utility is unable to discover the TEG-224WSplus. What should I do?

A2: Make sure that the TEG-224WSplus is powered on and that all connections are secure. Also check that your computer's IP Address is on the same network segment as the TEG-224WSplus. The default IP Address of the Switch is **192.168.0.1** and the default password is **admin**. Alternatively, you can use the web browser to configure the Switch. Type <http://192.168.0.1> into the address bar of your browser.

Q3: When I access the TEG-224WSplus using a web browser, I get a screen that tells me "only one user can login". What should I do?

A3: Another computer is configuring the TEG-224WSplus. Please wait until the user logs off. If the other user has already logged off and you still get the same screen, then disconnect the power cord from the TEG-224WSplus, wait for 5 seconds, reconnect the power cord to the TEG-224WSplus, allow 5 seconds for the Switch to power on, and then attempt to access the web configuration page to login.

Q4: I forgot the administration password. How do I reset my TEG-224WSplus?

A4: Press on the reset button using a pen or paperclip for 10 seconds. The default password is **admin**.

Q5: When I connect a computer to the Switch's gigabit port, the LINK/ACT LED turns on, but the 100Mbps LED remains off.

A5: When the 1000Mbps LED remains off, the computer's connection speed is 10Mbps or 100Mbps (if the 100Mbps LED is on). Make sure that you have a Gigabit Ethernet adapter installed. Also make sure to use a CAT-5e or CAT-6 Ethernet cable.

If you still encounter problems or have any questions regarding the TEG-224WSplus, please refer to the User's Guide included on the Utility CD-ROM or contact TRENDnet's Technical Support Department.

Certifications

This equipment has been tested and found to comply with FCC and CE Rules.

Operation is subject to the following two conditions:

- (1) This device may not cause harmful interference.
- (2) This device must accept any interference received. Including interference that may cause undesired operation.



Waste electrical and electronic products must not be disposed of with household waste. Please recycle where facilities exist. Check with your Local Authority or Retailer for recycling advice.



NOTE: THE MANUFACTURER IS NOT RESPONSIBLE FOR ANY RADIO OR TV INTERFERENCE CAUSED BY UNAUTHORIZED MODIFICATIONS TO THIS EQUIPMENT. SUCH MODIFICATIONS COULD VOID THE USER'S AUTHORITY TO OPERATE THE EQUIPMENT.



TRENDnet[®]

TRENDnet Technical Support

US • Canada

Toll Free Telephone: 1(866) 845-3673

24/7 Tech Support



Europe (Germany • France • Italy • Spain • Switzerland • UK)

Toll Free Telephone: +00800 60 76 76 67

English/Espanol - 24/7

Francais/Deutsch - 11am-8pm, Monday - Friday MET

Worldwide

Telephone: +(31) (0) 20 504 05 35

English/Espanol - 24/7

Francais/Deutsch - 11am-8pm, Monday - Friday MET

Product Warranty Registration

Please take a moment to register your product online.

Go to TRENDnet's website at <http://www.trendnet.com>

TRENDnet

3135 Kashiwa Street
Torrance, CA 90505
USA