



## Quick Installation Guide



**TEG-224WSplus**

# Table of Contents

English .....	1
1. Before You Start .....	1
2. Hardware Installation .....	2
3. Web Management Utility .....	3
Troubleshooting .....	6

# 1. Before You Start



## Package Content

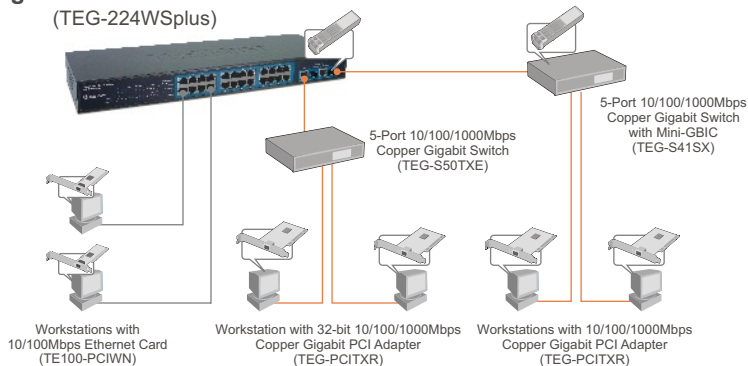
- TEG-224WSplus
- Quick Installation Guide
- Utility CD-ROM
- 2 mounting brackets with screws
- AC Power Cord

## System Requirements

- Web Browser: Internet Explorer (5.0 or above), Netscape (6.0 or above)
- Computer with Network adapter installed

## Application

### 26-Port 10/100/1000Mbps Gigabit Web Smart Switch (TEG-224WSplus)



1000Mbps

## 2. Hardware Installation

1. Connect the **Power Cord** to the rear of the TEG-224WSplus and then to a power outlet.



2. Connect a CAT-5 network cable from the computer to an available Ethernet port of the TEG-224WSplus.

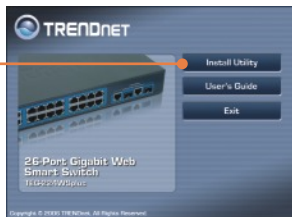


## 3. Web Management Utility

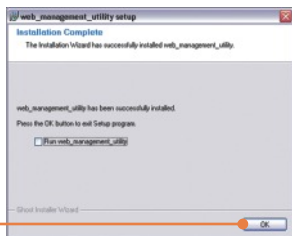
Note: Install and use the Web Management Utility to discover all the Web Management Switches on the network, assign IP Address, change the password, and upgrade to new firmware.

### For Windows User

1. Insert the **Utility CD-ROM** into your computer's CD-ROM Drive and then click **Install Utility**.



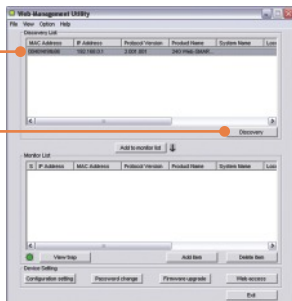
2. Follow the **Installation Wizard** instructions. Click **OK**.



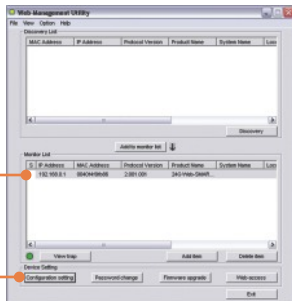
3. Click **Start > Programs > web\_management\_utility**, and then click **web\_management\_utility**.



4. Click **Discovery**, and then double-click the **Switch** that appears in the **Discovery List**.



5. Click the **Switch** in the **Monitor List** and then click **Configuration setting**.



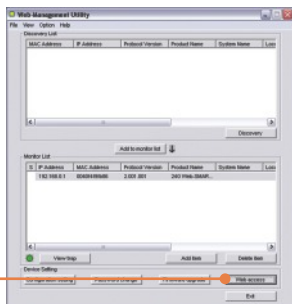
6. Configure the **IP Address**, **Subnet mask**, **Gateway**, and **Password**. Click **Set**.



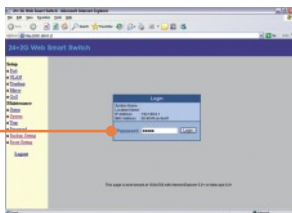
7. Click **OK**.



8. Click **Web access**.



9. Type in your **Password** and then click **Login**.



For more information regarding the **TEG-224WSplus** configuration and advanced settings, please refer to the User's Guide included on the Utility CD-ROM or TRENDnet's website at [www.trendnet.com](http://www.trendnet.com)

**Q1: After connecting the TEG-224WSplus to a power outlet, the LEDs do not turn on.**

**A1:** Check the connection of the power cord to the TEG-224WSplus and the power outlet. Also check that the power outlet is receiving power.

**Q2: After installing the Web-Management Utility, I clicked Discovery and the Utility is unable to discover the TEG-224WSplus. What should I do?**

**A2:** Make sure that the TEG-224WSplus is powered on and that all connections are secure. Also check that your computer's IP Address is on the same network segment as the TEG-224WSplus. The default IP Address of the Switch is **192.168.0.1** and the default password is **admin**. Alternatively, you can use the web browser to configure the Switch. Type <http://192.168.0.1> into the address bar of your browser.

**Q3: When I access the TEG-224WSplus using a web browser, I get a screen that tells me "only one user can login". What should I do?**

**A3:** Another computer is configuring the TEG-224WSplus. Please wait until the user logs off. If the other user has already logged off and you still get the same screen, then disconnect the power cord from the TEG-224WSplus, wait for 5 seconds, reconnect the power cord to the TEG-224WSplus, allow 5 seconds for the Switch to power on, and then attempt to access the web configuration page to login.

**Q4: I forgot the administration password. How do I reset my TEG-224WSplus?**

**A4:** Press on the reset button using a pen or paperclip for 10 seconds. The default password is **admin**.

**Q5: When I connect a computer to the Switch's gigabit port, the LINK/ACT LED turns on, but the 100Mbps LED remains off.**

**A5:** When the 1000Mbps LED remains off, the computer's connection speed is 10Mbps or 100Mbps (if the 100Mbps LED is on). Make sure that you have a Gigabit Ethernet adapter installed. Also make sure to use a CAT-5e or CAT-6 Ethernet cable.

If you still encounter problems or have any questions regarding the TEG-224WSplus, please refer to the User's Guide included on the Utility CD-ROM or contact TRENDnet's Technical Support Department.

## Certifications

This equipment has been tested and found to comply with FCC and CE Rules.

Operation is subject to the following two conditions:

- (1) This device may not cause harmful interference.
- (2) This device must accept any interference received. Including interference that may cause undesired operation.



Waste electrical and electronic products must not be disposed of with household waste. Please recycle where facilities exist. Check with you Local Authority or Retailer for recycling advice.



**NOTE:** THE MANUFACTURER IS NOT RESPONSIBLE FOR ANY RADIO OR TV INTERFERENCE CAUSED BY UNAUTHORIZED MODIFICATIONS TO THIS EQUIPMENT. SUCH MODIFICATIONS COULD VOID THE USER'S AUTHORITY TO OPERATE THE EQUIPMENT.





## TRENDnet Technical Support

### US • Canada

**Toll Free Telephone:** 1(866) 845-3673  
24/7 Tech Support



### Europe (Germany • France • Italy • Spain • Switzerland • UK)

**Toll Free Telephone:** +00800 60 76 76 67  
English/Espanol - 24/7  
Francais/Deutsch - 11am-8pm, Monday - Friday MET

### Worldwide

**Telephone:** +(31) (0) 20 504 05 35  
English/Espanol - 24/7  
Francais/Deutsch - 11am-8pm, Monday - Friday MET

## Product Warranty Registration

Please take a moment to register your product online.  
Go to TRENDnet's website at <http://www.trendnet.com>

**TRENDnet**  
3135 Kashiwa Street  
Torrance, CA 90505  
USA