

TEG-160WS

**16-port 10/100/1000Mbps Copper Gigabit Smart Switch (Rack Mount)
Quick Installation Guide**

**Guide d'installation rapide
Commutateur intelligent Gigabit cuivre 10/100/1000Mbps à 16 ports**

**16-Port 10/100/1000 MBit/s Kupfer-Gigabit Smart-Switch
Kurzanleitung zur Installation**

**Guía de instalación rápida del c
onmutador Gigabit Copper de 16 puertos a 10/100/1000 Mbps**

Version 02.04.2005



TRENDnet[®]
TRENDware, USA
What's Next in Networking

Table of Contents

English	1
1. Prepare for Installation	1
2. Product Detail	2
3. Hardware Installation	3
4. Verify Installation	4
5. Configuring the TEG-160WS	5
Troubleshooting	10

English QIG

1. Prepare for Installation

Thank you for purchasing the TRENDnet's TEG-160WS 16-port 10/100/1000Mbps Copper Gigabit Smart Switch (Rack Mount).

This guide will help you to install and configure the TEG-160WS. Installation should be easy and trouble-free. If you experience any problems, please refer to the Troubleshooting section. If you need further technical assistance, please visit www.TRENDNET.com or contact technical support by phone.

Verify Package Contents

Please make sure you have everything in the box:



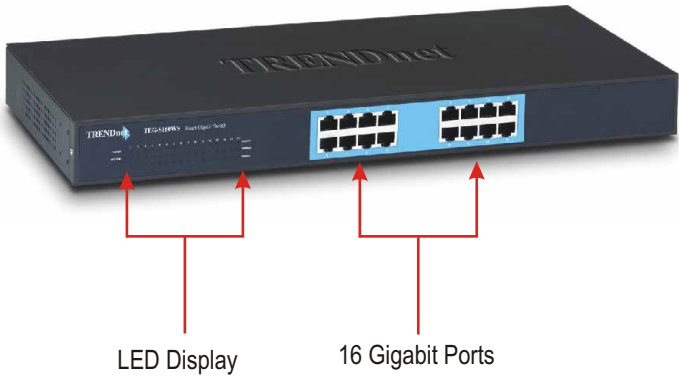
Minimum System Requirements

Before setting up the TEG-160WS, you should have the following:

1. Workstations with network cards
2. TCP/IP protocol installed in all workstations
3. A web browser such as Internet Explorer or Netscape Navigator
4. A RJ-45 Network Cable to connect your workstations to the TEG-160WS

2. Product Detail

The TEG-160WS has sixteen 10/100/1000 Mbps ports that support auto negotiation and auto-MDIX. It also has LED's that indicate power, CPU activity, network speed, and network activity.



3. Hardware Installation

Please keep in mind that the site where you install the TEG-160WS may greatly affect its performance. Refer to the User's Guide in the provided CD-ROM for optimal installation.

1. Connect AC Power cord to the back of the TEG-160WS.
2. Press the power button to turn on the TEG-160WS.



3. Using a RJ-45 network cable (CAT 5 cable), connect your workstation to the TEG-160WS.



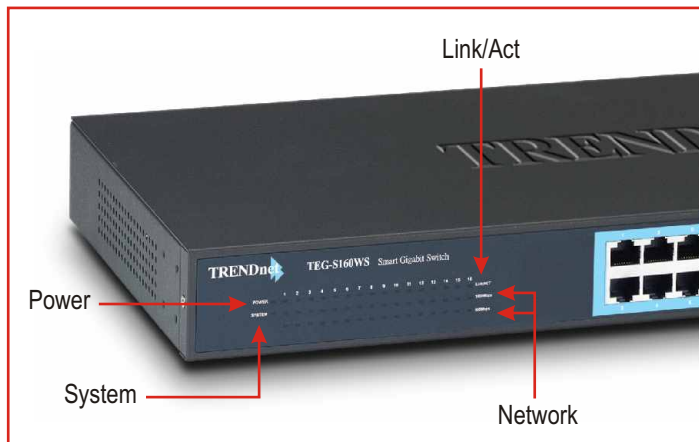
Congratulations!
Installation is now complete.

Note: If you would like to verify the TEG-160WS has been properly installed, please go to the Verify Installation section.

4. Verify Installation

Verify the following LED display:

1. Make sure that the power LED is on.
2. Verify that the System LED is blinking.
3. Verify that the connected workstation has the Link/Act LED on and a network LED on.

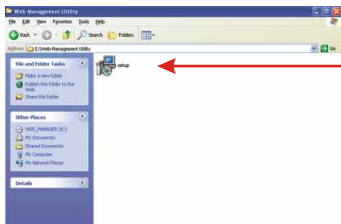
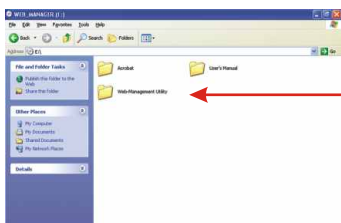
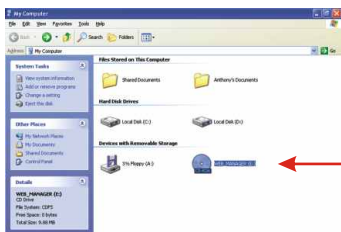


5. Configuring the TEG-160WS

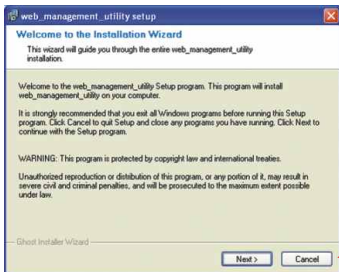
Note: For MAC Users, change your computers IP address to 192.168.0.X (where X is an available number from 1-253), and enter 192.168.0.1 in your web browser to access the TEG-160WS Web Utility.

For Windows Users

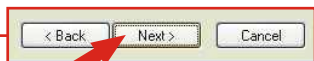
1. Insert the TEG-160WS CD-ROM into your computer's CD-ROM drive.
2. Double-click **My Computer** on your desktop, double-click **CD-ROM**, double-click **Web-Management Utility**, and double click **Setup**.



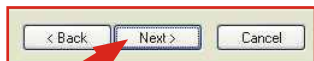
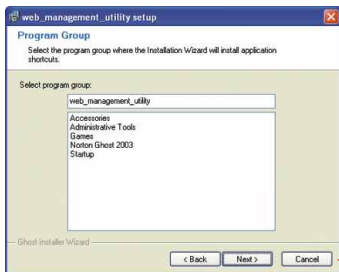
3. Click Next.



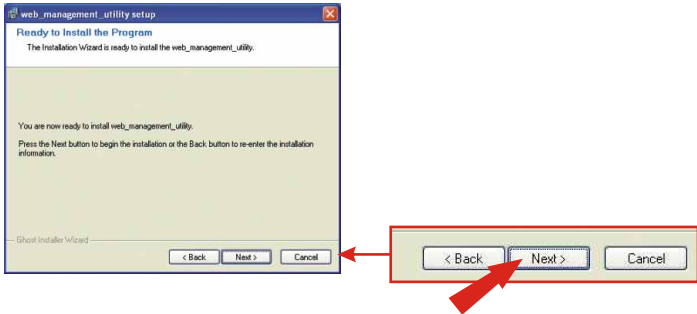
4. Click Next.



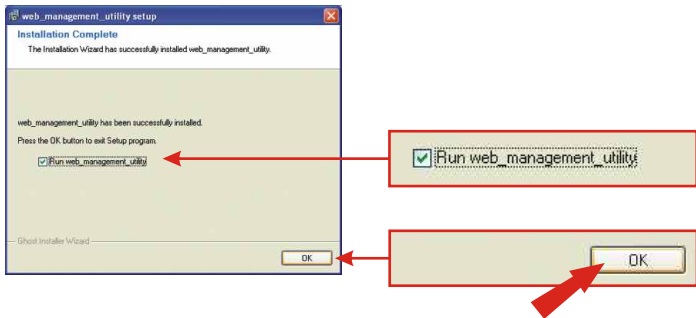
5. Click Next.



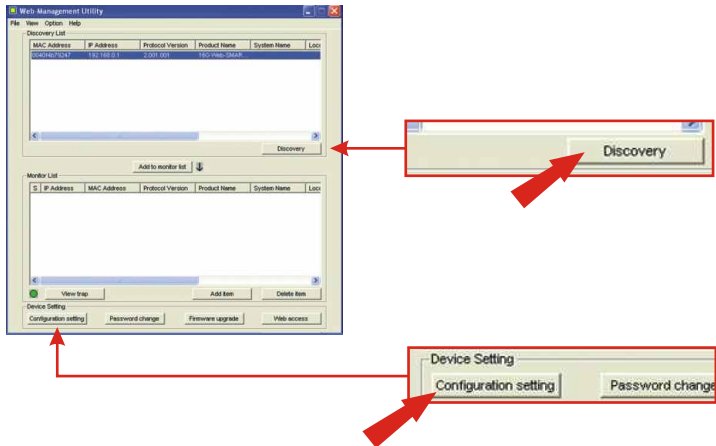
6. Click Next.



7. Check Run web_management_utility. Click OK.



8. Click **Discovery**, Click the TEG-160WS, and Click **Configuration Setting**.



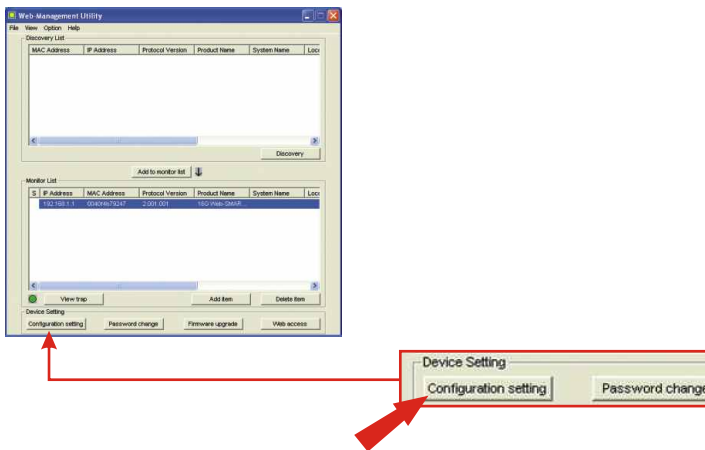
9. In the **Configuration** window, type in IP Address and Gateway that applies to your network segment, and type **admin** as your password. Click **Set**.



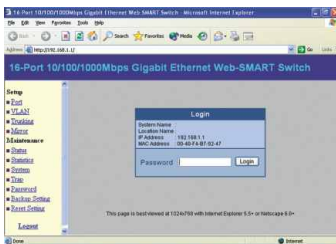
10. Click **OK**.



11. Double-click the TEG-160WS in the **Discovery List**, select the TEG-160WS in the **Monitor List** and Click **Web Access**.



12. Type admin to configure the TEG-160WS. For more information on VLAN, Trunking, and other features, please consult the User's Guide in the provided CD-ROM.



Troubleshooting

Q1. How come I cannot see any light from any of my LED's?

A1. Your TEG-160WS Web Smart Switch is not getting any power. Make sure that your surge protector or your outlet is getting power and make sure that the AC Power cord is properly connected to your TEG-160WS.

Q2. I typed "admin" in the password field, but I still cannot configure my TEG-160WS IP address.

A2. Make sure that CAPSLOCK is turned off before you type in admin in the password field. Password is case sensitive.

Q3. My current network card operates at 100Mbps. How can I upgrade my workstation to 1000Mbps?

A3. TRENDware provides Gigabit solutions to help you upgrade your workstation. For PCs, we recommend using the TEG-PCITXR or the TEG-PCITXM2. For notebooks, we recommend using the TEG-PCBUSR.

If you have any questions regarding the **TEG-160WS** Web Smart Gigabit Switch please contact Trendware Technical Support Department..

Contact Technical Support

Telephone: +1-310-626-6252
Fax: +1-310-626-6267
Website: www.TRENDNET.com
E-mail: support@trendware.com

Technical Support Hours

7:00AM ~ 6:00PM, Monday through Friday
Pacific Standard Time (except holidays)

Certifications

This equipment has been tested and found to comply with FCC and CE Rules. Operation is subject to the following two conditions:

- (1) This device may not cause harmful interference.
- (2) This device must accept any interference received.
Including interference that may cause undesired operation.





Product Warranty Registration

Please take a moment to register your product online.
Go to TRENDware's website at <http://www.TRENDNET.com>

TRENDware International, Inc.
3135 Kashiwa Street
Torrance, CA 90505

<http://www.TRENDNET.com>