



16-Port Gigabit Web-Based Smart Switch TEG-160WS

TRENDnet's TEG-160WS 16-Port 10/100/1000Mbps Web-Based Smart Switch is the ideal Switch for network segmenting. It has 16 10/100/1000Mbps Auto-Sensing and Auto-MDIX ports for easy installation. TEG-160WS supports web browser configuration; Network Administrator can use web browser to configure port speed, port-based VLAN and QoS, and also monitor each port's status which provides simple migration, scalability, and flexibility to handle new applications and data types. TRENDnet's TEG-160WS is powerful and easy-to-use in reducing unnecessary broadcast traffic and enhance network security.

FEATURES

- 16 x 10/100/1000Mbps Auto-Negotiation and Auto-MDIX Gigabit Ports
- Full/Half-Duplex transfer mode for each port (1000Mbps Full-Duplex only)
- Full Wire-Speed Non-Blocking Reception and Transmission
- Store and Forward Switching Method
- 272K bytes RAM data buffer and 4K entries MAC address table
- Extensive diagnostic LED's on the front panel
- IEEE 802.3x flow control for full-duplex mode; Back Pressure flow control for half-duplex mode
- Proprietary Windows Based Management/Monitoring Utility (similar to SNMP Trap)
- Port-Based VLAN and Port-Based IEEE 802.1p QoS (High/Normal)
- Supports Trunking and Port Mirroring
- Port Setting function, users can set each port's availability, speed, duplex mode, and flow control
- Easy configuration via Web browser
- Standard 19" Rack-Mount Design
- 5-Year Warranty

BENEFITS

Easy Installation:

Each RJ-45 port auto-senses connection speed duplex type and MDI-X media type. Connect to 10 or 100 or 1000Mbps network devices with straight through or crossover cable.

Flexibility:

Easy configuration and management through Web Browser.

Performance:

Non-blocking high performance with internal Switch Controller.

Cost-Effectiveness:

Provides Fast Ethernet Switch with management functions at an affordable price.

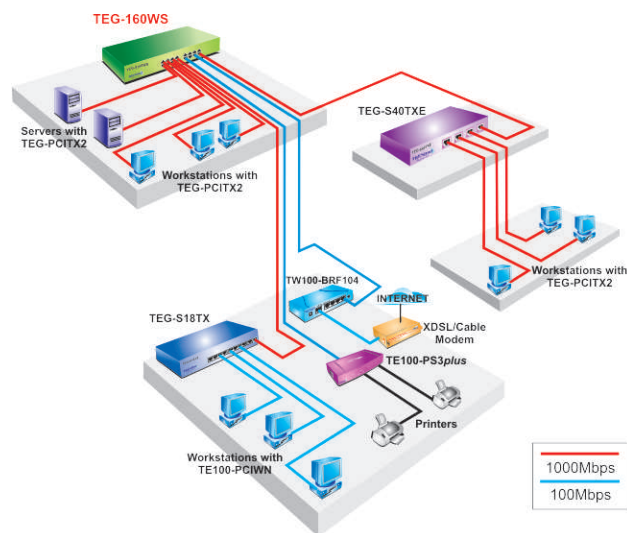
16-Port Gigabit Web-Based Smart Switch

TEG-160WS

SPECIFICATIONS

Hardware	
LAN Standards	• IEEE 802.3 10Base-T; IEEE 802.3u 100Base-TX, IEEE 802.3ab 1000Base-T, 100Base-FX
Network Media	• Ethernet: UTP/STP Cat. 3, 4, 5 • Fast Ethernet: UTP/STP Cat. 5 • Gigabit: UTP/STP Cat. 5/5E
Protocol	• CSMA/CD
Topology	• Star
LAN Port	• 16 x 10/100/1000Mbps Auto Negotiation, Auto-MDIX ports
Address Table	• 4K entries per device
Data Transfer Rate	• Ethernet: 10/20Mbps (Half/Full-Duplex) • Fast Ethernet: 100/200Mbps (Half/Full-Duplex) • Gigabit Ethernet: 2000Mbps (Full-Duplex)
Data RAM Buffers	• 272 Kbytes
Bandwidth	• 32Gbps
Diagnostic LEDs	• Per Unit: Power, System • Per Port (RJ-45): Link/Activity, 100Mbps.
Power	• 110 ~ 240V AC, 50/60Hz, internal universal power supply, 25 Watts. Max.
Dimensions (W x H x D)	• 440 x 210 x 44 mm (17.32 x 8.3 x 1.73 inches)
Weights	• 2Kg. (4.48 lb)
Temperature	• Operating: 0°C ~ 40°C (32°F ~ 104°F) • Storage: -10°C to 70°C (14°F to 158°F)
Humidity	• 10% ~ 90% (no-condensing)
Certifications	• FCC Class A, CE Mark A, VCCI-A

NETWORKING SOLUTIONS



PACKAGE CONTENTS

- Multi-Language QIG
- CD-ROM
- Power Cord
- Rack Mount Kit

RELATED PRODUCTS

TEG-240WS	24-port 10/100/1000Mbps Gigabit Web-Based Smart Switch
TEG-2224WS	28-port 10/100/1000Mbps Web-Based Gigabit Smart Switch
TEG-2248WS	52-Port Gigabit Web-Based Smart Switch

ORDERING INFORMATION

TRENDNET

3135 Kashiwa Street, Torrance, CA 90505 USA
 Tel: 1-310-891-1100
 Fax: 1-310-891-1111
 Web: www.trendnet.com
 Email: sales@trendnet.com

To Order Please Call:

1-888-326-6061

