



## Quick Installation Guide

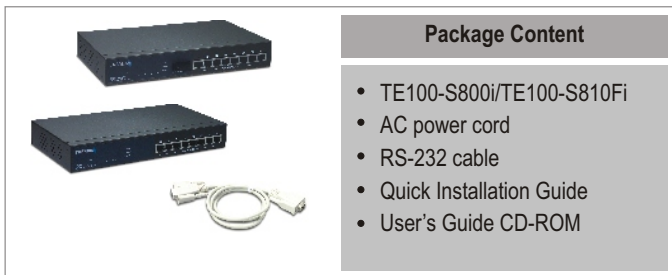


**TE100-S800i**  
**TE100-S810Fi**

# Table of Contents

English .....	1
1. Before You Start .....	1
2. How to Connect .....	2
3. Using the Switch .....	3
Troubleshooting .....	5

# 1. Before You Start



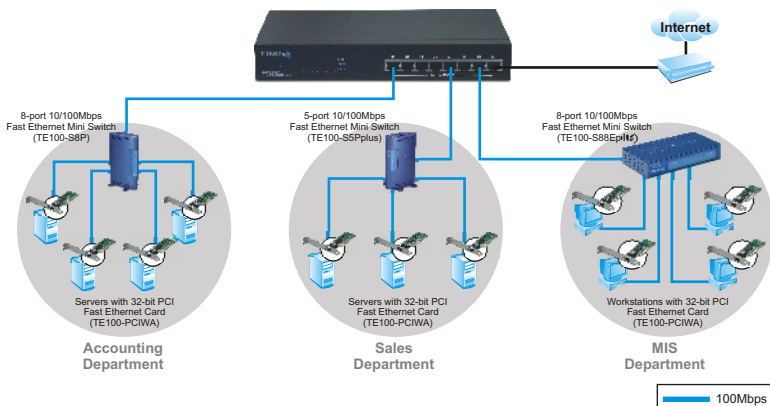
## System Requirements

1. Workstations with network cards
2. TCP/IP protocol installed in all workstations
3. A web browser such as Internet Explorer or Netscape Navigator
4. RJ-45 Network Patch Cable to connect your workstations to the TE100-S800i/TE100-S810Fi

(TE100-S800i)  
**8-Port 10/100Mbps Layer 2 Managed Switch**

OR

(TEG-S810Fi)  
**8-Port 100Base-FX Layer 2 Managed Switch with 100Base-FX Port**



## 2. How to Connect

1. Connect the AC Power cord to the back of the TE100-S800i/TE100-S810Fi.

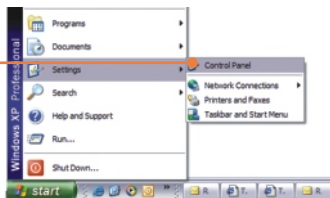


2. Connect the network cable to the front of the switch and your PC.

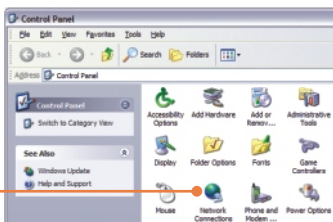
3. Verify that the **PWR** led displays a solid green light.

# 3. Using the Switch

1. Go to **Start** → **Settings** → **Control Panel**.



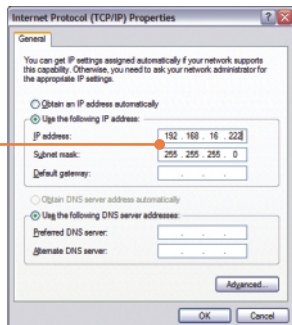
2. Double-Click the **Network Connection** Icon.



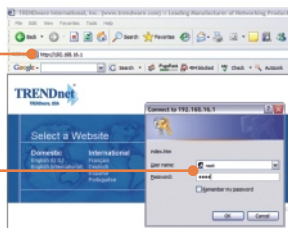
3. Right-Click **Local Area Connection**, and select **Properties**.



4. Click the **General** tab, select **Internet Protocol(TCP/IP)**, and click **Properties**. Change the IP address to 192.168.16.222 and click **OK** to apply the settings.

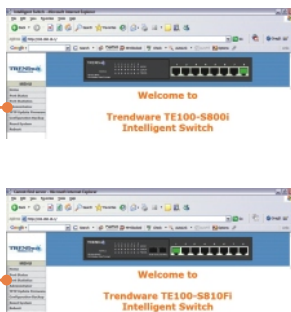


5. Open your web browser, type **http://192.168.16.1**, and press **Enter**.



6. User Name: **root**  
Password: **root**

7. Select the appropriate option to configure the SNMP switch.



**Your installation is now complete.**

Note: For more detail on advanced features, please consult the User's Guide.

**Q1. How come I cannot see any light from any of my LED's?**

**A1.** Your TE100-S800i/TE100-S810Fi is not getting any power. Make sure that your surge protector or your outlet is getting power and make sure that the AC Power cord is properly connected to your TE100-S800i/TE100-S810Fi.

**Q2. I changed my IP settings to 192.168.16.222 to access the switch, but I still cannot get into the Web configuration page. What should I do?**

**A2.** Make sure there is no other network device using the same IP address. Afterwards, consult the User's Guide to access the switch through the Console Port. Once you reach the command line interface, perform a factory reset and try again.

**Q3. I performed a factory reset on the TE100-S800i/TE100-S810Fi, but I still cannot access the web configuration page. What should I do?**

**A3.** If you are configuring more than one TE100-S800i/TE100-S810Fi, then it is possible that you are experiencing IP conflict between these two switches. Please configure each switch one at a time, and make sure you assign a unique IP address to each switch.

If you have any questions regarding the TE100-S800i/TE100-S810Fi, please contact TRENDnet Technical Support Department.

## Certifications

This equipment has been tested and found to comply with FCC and CE Rules.

Operation is subject to the following two conditions:

- (1) This device may not cause harmful interference.
- (2) This device must accept any interference received. Including interference that may cause undesired operation.



Waste electrical and electronic products must not be disposed of with household waste. Please recycle where facilities exist. Check with you Local Authority or Retailer for recycling advice.



**NOTE:** THE MANUFACTURER IS NOT RESPONSIBLE FOR ANY RADIO OR TV INTERFERENCE CAUSED BY UNAUTHORIZED MODIFICATIONS TO THIS EQUIPMENT. SUCH MODIFICATIONS COULD VOID THE USER'S AUTHORITY TO OPERATE THE EQUIPMENT.

## ADVERTENCIA

En todos nuestros equipos se mencionan claramente las características del adaptador de alimentación necesario para su funcionamiento. El uso de un adaptador distinto al mencionado puede producir daños físicos y/o daños al equipo conectado. El adaptador de alimentación debe operar con voltaje y frecuencia de la energía eléctrica domiciliar existente en el país o zona de instalación.





# TRENDnet<sup>®</sup>

## TRENDnet Technical Support

US • Canada

**Toll Free Telephone:** 1(866) 845-3673

24/7 Tech Support



Europe (Germany • France • Italy • Spain • Switzerland • UK)

**Toll Free Telephone:** +00800 60 76 76 67

English/Espanol - 24/7

Francais/Deutsch - 11am-8pm, Monday - Friday MET

Worldwide

**Telephone:** +(31) (0) 20 504 05 35

English/Espanol - 24/7

Francais/Deutsch - 11am-8pm, Monday - Friday MET

## Product Warranty Registration

Please take a moment to register your product online.

Go to TRENDnet's website at <http://www.trendnet.com>

### TRENDnet<sup>®</sup>

20675 Manhattan Place

Torrance, CA 90501

USA