



## **TE100-S55Eplus** **5-Port 10/100Mbps Auto-MDIX Fast Ethernet Mini Switch**

TRENDnet's TE100-S55Eplus, 5-port, palm-sized 10/100Mbps Fast Ethernet Switch, presents the perfect choice for small workgroups for any desktop space. It allows users to simply plug any port to either a 10Mbps or 100Mbps network to multiply bandwidth, boost response time and satisfy heavy load demands. The RJ-45 network ports automatically negotiate between 10Base-T and 100Base-TX network speeds, half- and full-duplex modes, and MDI-II and MDI-X media types. TE100-S55Eplus is truly a Plug-N-Play device, which provides cost-effective and high-performance solutions.

Version E1.



### FEATURES

- ...> Compliant with IEEE 802.3 and IEEE 802.3u standards
- ...> 5-port 10/100Mbps connection speed auto-detection
- ...> Half- or Full-Duplex operation for each port
- ...> Auto-MDIX media type detection, easy uplink with any port
- ...> Non-blocking wire-speed reception and transmission and non-head-of-line-blocking forwarding
- ...> Store-and-forward switching method
- ...> Supports IEEE802.3x full-duplex flow control and back pressure half-duplex flow control
- ...> Build-in high efficiency 64KB SRAM for packet buffer and 1K MAC addresses table
- ...> Comprehensive LED indicators for port status
- ...> Robust Wall-Mountable metal housing
- ...> 5-year Warranty

### BENEFITS

- ...> **Easy Installation:** Designed to link 10Mbps and 100Mbps with 5 ports for an easy connection.
- ...> **Flexibility:** NWay ports auto-negotiate between 10Base-T and 100Base-TX, as well as between half- and full-duplex modes. Auto-MDIX for each port; connects to regular RJ-45 port or Uplink port with either regular "straight through" or crossover RJ-45 cable.
- ...> **Expandability:** All ports support 200Mbps (in full-duplex mode), expanding from any port and for any number of Switches.
- ...> **Easy Migration:** Easy upgrade to Fast Ethernet without reconfiguration.
- ...> **Dependability:** Parallel store-and-forward architecture allows direct transfer.

# TE100-S55Eplus

## 5-Port 10/100Mbps Auto-MDIX Fast Ethernet Mini Switch

### SPECIFICATIONS

#### Standards:

- IEEE 802.3 for 10Base-T Ethernet, IEEE 802.3u for 100Base-TX Fast Ethernet. ANSI/IEEE 802.3 Nway auto-negotiation

#### Data Transfer Rate:

- 10/100Mbps (20/200Mbps in full-duplex mode)

#### Protocol:

- CSMA/CD

#### Connectors:

- 5 UTP/STP RJ-45 Auto-MDIX

#### Network Media:

- 10Mbps: UTP/STP Cat. 3, 4, 5 EIA/TIA-568, 100 ohm, 100 meters max.
- 100Mbps: UTP/STP Cat. 5 EIA/TIA-568, 100 ohm, 100 meters max.

#### Data Transfer Rate:

- Ethernet: 10Mbps (half-duplex); 20Mbps (full-duplex)
- Fast Ethernet: 100Mbps (half-duplex); 200Mbps (full-duplex)

#### Topology:

- Star

#### Diagnostic LEDs:

- Power, Link/Activity, 100Mbps

#### Power:

- External power supply, 7.5V, 1A. 2.5 Watts (max.)

#### Dimensions:

- 125 x 65 x 30 mm (4.9 x 2.55 x 1.1 inches)

#### Weight:

- 234 g (8 oz.)

#### Temperature:

- Operating: 0° ~ 40° C (32° ~ 104° F)
- Storage: -10° ~ 70° C (14° ~ 158° F)

#### Humidity:

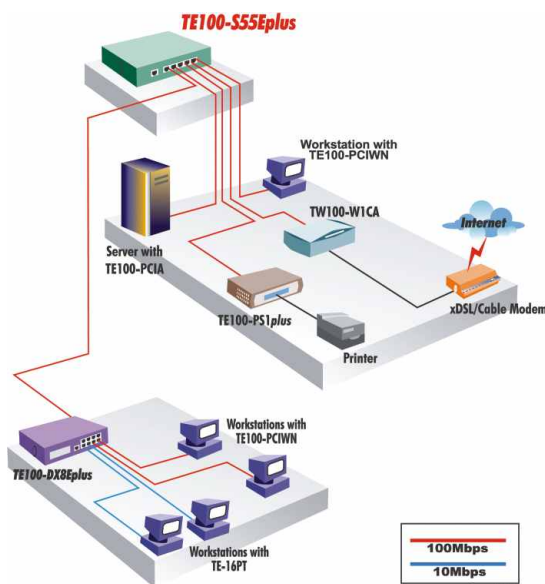
- Operating: 10 % ~ 90 % RH
- Storage: 5 % ~ 90 % RH

#### Certifications:

- FCC, CE, VCCI-B



### NETWORKING SOLUTIONS



**To Order Please Call:**  
**1-888-326-6061**

### RELATED PRODUCT

- ➔ **TE100-S55Eplus:**  
5-port 10/100Mbps Auto-MDIX Fast Ethernet Mini Switch
- ➔ **TE100-S88Eplus:**  
8-port 10/100Mbps Auto-MDIX Fast Ethernet Mini Switch

### ORDERING INFORMATION

**TRENDware International, Inc.**  
3135 Kashiwa Street  
Torrance, CA. 90505. USA  
Tel: 310-891-1100  
Fax: 310-891-1111  
Web: [www.TRENDNET.com](http://www.TRENDNET.com)  
Email: [sales@trendware.com](mailto:sales@trendware.com)

**TRENDnet**  
TRENDware, USA