



TE100-S1616 16-port 10/100Mbps N-Way Switch

TRENDnet's TE100-S1616 is a high performance auto-sensing N-way switch that automatically negotiates between 10Base-T and 100Base-TX network speeds. All ports support half- and full-duplex that allows maximum network performance. Uplinking to Fast Ethernet or downlink to Ethernet are much easier than before. With Plug and Play capabilities, TRENDnet's TE100-S1616 is the most flexible way to increase network performance and manageability. The built-in fiber expansion slots allow links between two switches or between a switch and a server. TRENDnet's TE100-S1616 works well in both corporate and small business environments.



FEATURES

- Compliant with IEEE 802.3 10Base-T, IEEE 802.3u 100Base-TX/FX standard
- Supports 16 UTP/STP RJ-45 10/100Mbps Nway auto-sensing ports
- Store and forward packet switching
- Half- and full- duplex operation for each port
- 2.1 GB switching fabric provides high-speed switching scheme
- Auto-learning of network configuration
- Built-in 8K entries per device for Filtering Address Table
- 512KB per device RAM buffer.
- MDI-II uplink port (shared) for easy expansion.
- Optional MDA port for 100Base-FX solution
- Plug and Play
- EIA-19 Rack Mountable
- 5 Year Warranty

BENEFITS

- **Easy Upgrade:**
Ethernet workgroups are able to upgrade to Fast Ethernet by changing adapters and a hub without changing switches.
- **Expandability:**
Simple expansion can be done by cascading two or more switches with all ports supporting 200Mbps in full-duplex mode.
- **Flexibility:**
The N-way ports automatically negotiate between 10Base-T and 100Base-TX network speeds as well as between half- and full-duplex modes.
- **Cost Effective:**
Provides 10/100Mbps of Fast Ethernet at an affordable rate.
- **Performance:**
Top performance at an affordable price.

TE100-S1616

16-port 10/100Mbps N-Way Switch

SPECIFICATIONS

Standards:

- IEEE 802.3 10Base-T, IEEE 802.3u 100Base-TX/100Base-FX, ANSI/ IEEE 802.3 N-way auto-negotiation

Data Transfer Rate:

- 10/100Mbps (20/200Mbps in full-duplex mode)

Protocol:

- CSMA/CD

Connectors:

- 16 UTP/STP RJ-45

Diagnostic LED's:

- Power, FX Link/Rx
- FDX 10/100 (green), COL 10/100 (amber)
- 100LINK/ACT (green). 10LINK/ACT (amber)

Power:

- Internal Universal Power Supply (100~240 VAC. 50/60 Hz, 40 Watt Max.)

Dimensions:

- 440x200x44mm
15.7" x 7.9" x 1.7" (L x W x H)

Weight:

- 2.35 kg / 5.17 lbs.

Temperature:

- Operating: -10° to 40° C (14° to 104° F)
- Storage: -20° to 70° C (-4° to 158° F)

Humidity:

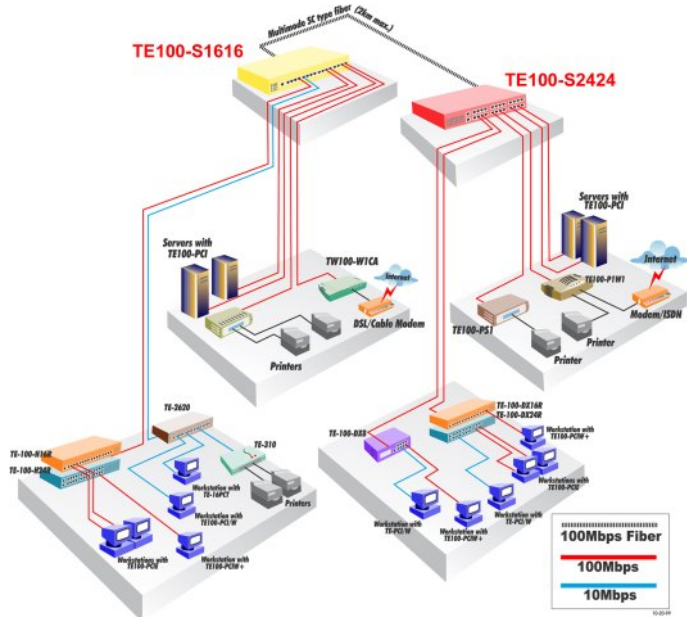
- Operating: 10% to 90% (non-condensing)
- Storage: 0% to 90% (non-condensing)

Certification:

- FCC Class A, UL, CE, VCCI-I



NETWORKING SOLUTIONS



To Order Please Call:
1-888-326-6061

PRODUCT INFORMATION

- **TE100-S22:** 2-port 10/100Mbps N-way Switching Hub
- **TE100-S88:** 8-port 10/100Mbps N-way Switching Hub
- **TE100-S1616:** 16-port 10/100Mbps N-way Switch
- **TE100-S2424:** 24-port 10/100Mbps N-way Switch
- **TE100-SFXM:** SC-Type Fiber Slide-in Module for TE100-S1616/S2424

ORDERING INFORMATION

TRENDware International, Inc.
3135 Kashiwa Street
Torrance, CA. 90505. USA
Tel: 310-891-1100
Fax: 310-891-1111
Web: www.TRENDNET.com
Email: sales@trendware.com

TRENDnet
TRENDware, USA