



## **TE100-PS1** **10/100Mbps EtherPort Jr. Multi-Protocol Print Server**

The TE100-PS1 is a multiprotocol print server which transforms virtually all stand-alone printer into a shared network printer. The TE100-PS1 is equipped with auto-sensing 10/100Mbps NWay interfaces allowing direct connection to today's Fast Ethernet hubs or switches. The TE100-PS1 comes with 1 high-speed parallel port and a lifetime warranty.



### FEATURES

- ...→ Compliant with 10Base-T and 100Base-TX specification
- ...→ Auto-sensing N-Way 10Base-T or 100Base-TX interface
- ...→ Support Win3.x/95/98/NTTM, Netware bindery/native NDS, TCP/IP, Unix, AppleTalk
- ...→ IEEE 1284-compliant high-speed parallel ports
- ...→ Easy configuration through Windows and Telnet
- ...→ Latest MIB-II (RFC 1213) for SNMP-standard management
- ...→ Support HP PjL protocol for bi-directional network printer communication
- ...→ 5 Year Warranty

### BENEFITS

- ...→ **Integration:**  
Will turn any printer into a network printer.
- ...→ **Economical:**  
Turn a printer for one person into a printer for many.
- ...→ **Flexible:**  
Use them with either 10Base-T or 100Base-TX networks.
- ...→ **Cost Effective:**  
Provides 10Mbps, or 100Mbps network printer options in one unit.
- ...→ **Performance:**  
Full 100Mbps connectivity significantly boosts network printer performance.



# TE100-PS1

## 10/100Mbps EtherPort Jr. Multi-Protocol Print Server

### SPECIFICATIONS

#### LAN Standards:

- IEEE 802.3(10Base-T)
- IEEE 802.3u (100Base-TX) ANSI/IEEE
- 802.3 auto-negotiation

#### LAN Ports:

- Auto-sensing N-Way RJ-4

#### Network Cables:

- CAT 3,4, 5 UTP/STP for 10Base-T
- CAT 5 for 100Base-TX

#### Supported Frame:

- IEEE 802.2; IEEE 802.3; Ethernet II; Ethernet SNAP

#### Supported Protocol:

- IP; IPX/SPX; NetBEUI; Apple EtherTalk, SLP

#### Dimensions:

- 135 x 110 x 23mm (L x W x D)

#### Weight:

- 200 grams (excluding AC adapter)

#### Power Consumption:

- 6 Watts max.

#### Temperature:

- Operating: 0°C - 50°C
- Storage: -10°C - 50°C

#### Humidity:

- 10% - 90% (non-condensing)

#### Emission:

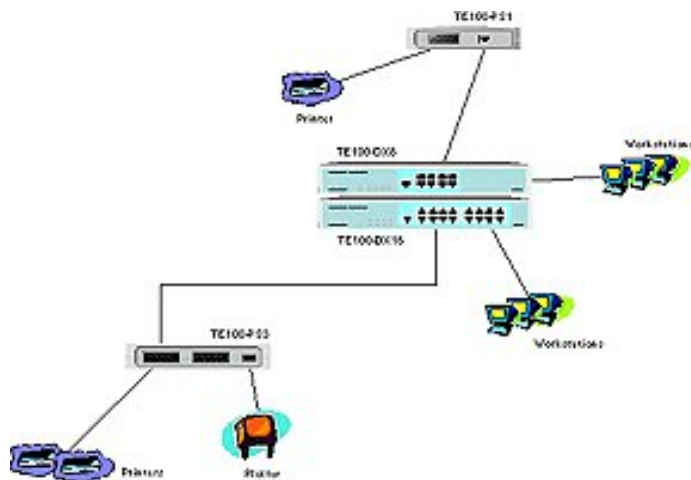
- FCC Class A; CE Mark A; VCCI Class 1; AS/NZS 3548:1995 Class A

#### Certification:

- FCC, UL, CE, VCCI, CSA, C-stick, TUV



### NETWORKING SOLUTIONS



**To Order Please Call:**  
**1-888-326-6061**

### PRODUCT INFORMATION

- ➔ **TE100-PS1:** 10/100Mbps EtherPort Jr. Multi-Protocol Print Server (1 Parallel Port)
- ➔ **TE100-PS1plus:** 10/100Mbps EtherPort Multi-Protocol Print Server (1 Parallel Port)
- ➔ **TE100-P3:** 10/100Mbps EtherPort Jr. Multi-Protocol Print Server (2 Parallel Ports + 1 Serial Port)
- ➔ **TE100-PS3plus:** 10/100Mbps EtherPort Multi-Protocol Print Server (3 Parallel Ports)
- ➔ **TE-310:** EtherPort Print Server for Novell (2 Parallel Ports +1 Serial Port)
- ➔ **TE-360:** EtherPort Jr. Print Server for Novell (1 Parallel Port)

### ORDERING INFORMATION

**TRENDware International, Inc.**  
3135 Kashiwa Street  
Torrance, CA. 90505. USA  
Tel: 310-891-1100  
Fax: 310-891-1111  
Web: [www.TRENDNET.com](http://www.TRENDNET.com)  
Email: [sales@trendware.com](mailto:sales@trendware.com)

**TRENDnet**  
TRENDware, USA