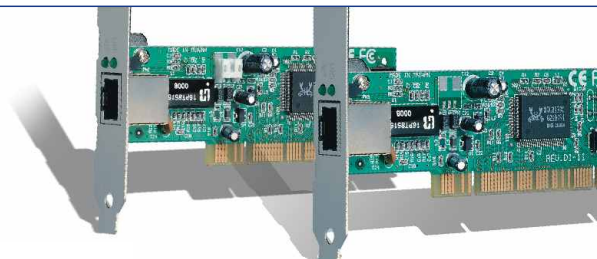


TE100-PCIWA TE100-PCIWN

32-bit PCI 10/100Mbps N-way Fast Ethernet Card with ACPI Wake-on-LAN/
32-bit PCI 10/100Mbps N-way Fast Ethernet Card
User's Guide

Placa 32-bit PCI 10/100Mbps N-way Fast Ethernet cu ACPI Wake-on-LAN/
Placa 32-bit PCI 10/100Mbps N-way Fast Ethernet
Manual de utilizare

Version 07.26.05



TRENDnet[®]
TRENDware, USA
What's Next in Networking

Table of Contents

English	1
1. Prepare for Installation	1
2. Install Hardware	2
3. Install Drivers	3
Română	7
1.Pregatiti-va pentru instalare	7
2. Instalare fizica	8
3. Instalare drivere	9
Troubleshooting	13

English UG

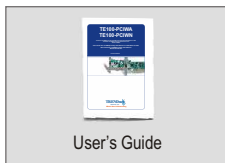
1. Prepare for Installation

Thank you for purchasing TRENDnet's TE100-PCIWN or TE100-PCIWA network adapter. Your new network adapter will allow you to connect to a Cable/DSL modem for broadband Internet access or share Internet access, files, and other resources on a 10/100Mbps Fast Ethernet network.

This guide will help you set up and configure your TE100-PCIWN or TE100-PCIWA network adapter. Following this installation should be quick and easy. If you run into problems, please refer to the Troubleshooting section at the end of this guide. If you need further technical support, please visit www.TRENDNET.com or call technical support by phone.

Verify Package Contents

Please make sure you have everything in the box:



Verify Equipment

Before installing this adapter, you should have:

1. A Computer with an available 32-bit PCI slot
2. Motherboard with Wake-On-LAN support for using Wake-On-LAN feature (TE100-PCIWA only)
3. A 300 MHz processor and 32 MB RAM on your computer (Recommended)
4. Windows 98/98SE/ME/2000/XP/2003 installed on your computer
5. A RJ-45 Ethernet cable

2. Install Hardware

Install Network Adapter

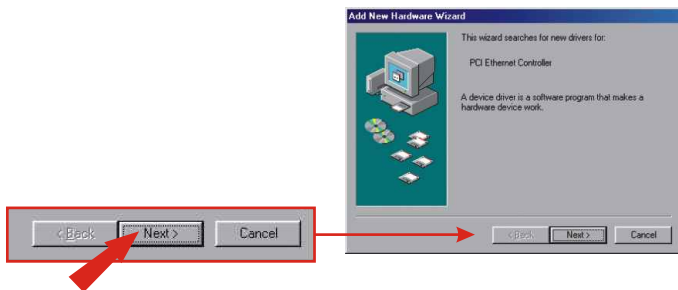
1. Shut down your computer.
2. Open your computer case to reveal the motherboard and expansion slots. (Please refer to your computer's user manual if you need help opening the case)
3. Insert the TE100-PCIWN or TE100-PCIWA network adapter into one of the motherboard's free PCI slots. Press down firmly and evenly on the card until it snaps into place.
4. If you would like to use the Wake-On-LAN feature, connect the included Wake-On-LAN cable to the motherboard's Wake-On-LAN connector. (For TE100-PCIWA only)
5. Screw the PCI card's metal bracket into your case with a standard bracket screw.
6. Close your computer case, and reboot your computer.
7. Connect your RJ-45 Ethernet cable to the TE100-PCIWN or TE100-PCIWA's Ethernet port and to the existing 10/100Mbps Fast Ethernet network or Cable/DSL modem.
8. Turn on your computer.



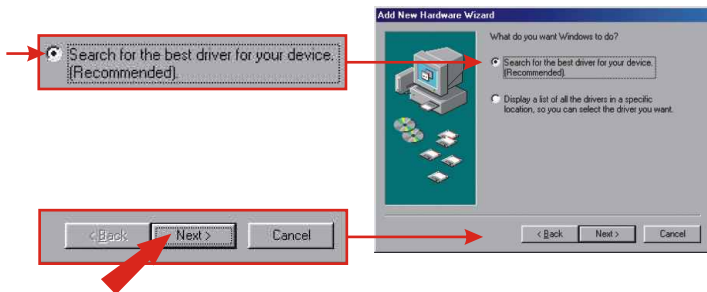
3. Install Drivers

Install Network Adapter

1. After your computer reboots, the “Add New Hardware Wizard” will appear. Click **Next**.

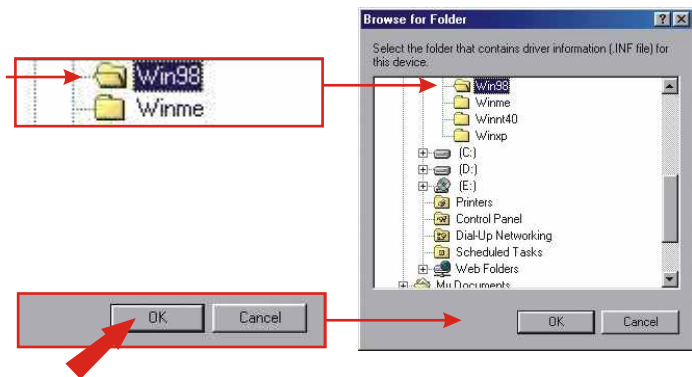


2. Insert the included TE100-PCIW Series Driver Diskette into your computer's floppy-drive. Verify that **Search for the best driver for your device** is selected, and click **Next**.

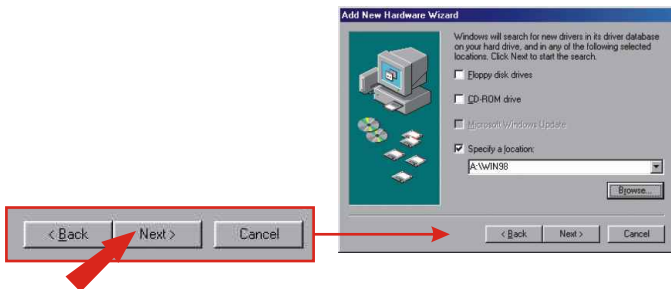


3. Select **Specify a location**, and click **Browse**.

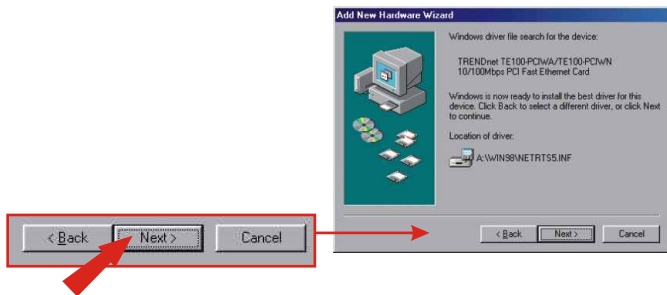
4. Double-click your floppy-drive (i.e.: **3 1/2 Floppy (A:)**). Select the folder named **Win98**, and click **OK**.



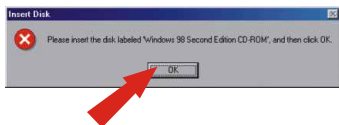
5. Click **Next**.



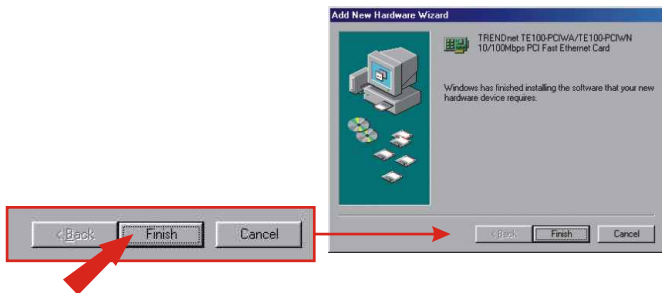
6. Once the Wizard tells you it's "ready to install the best driver," click **Next** to begin installing the driver.



7. You may be asked to insert your Windows 98 CD-ROM. If this happens, insert your Windows 98 CD-ROM into your CD-ROM drive, and click **OK**.



8. Click **Finish** to complete the driver installation.



9. Click **Yes**. Your computer will be updated with the new settings.

Note: If this prompt does not appear, you must manually restart your computer.



Windows ME/2000/XP

1. Windows will automatically detect and install the appropriate driver for your network adapter.

Congratulations!
Installation is now complete.

Română QIG

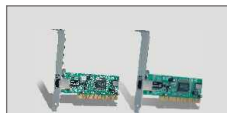
1. Pregatiti-va pentru instalare

Va multumim ca ati cumparat adaptorul de retea TE100-PCIWN de la TRENDnet. Noul dumneavoastra adaptor de retea va va permite sa va conectati la un modem Cablu/DSL pentru acces la Internet broadband sau sa share-uiti accesul la Internet, fisiere si alte resurse pe o retea 10/100Mbps Fast Ethernet.

Acest ghid va va ajuta sa setati si sa configurati adaptorul dumneavoastra de retea TE100-PCIWN. Urmarind acest ghid instalatia va fi usoara si rapida. Daca aveti nevoie de mai mult ajutor si suport tehnic, va rugam savizitati www.TRENDNET.com sau sunati suportul tehnic pe telefon.

Verificati continutul pachetului

Va rugam sa va asigurati ca aveti totul in cutie:



TE100-PCIWA sau TE100-PCIWN



Discheta drivere



Manual de utilizare

Verificati echipamentul

Inaintea instalarii acestui adaptor, ar trebui sa aveti:

1. un computer cu un slot PCI 32-bit liber
2. Placa de baza cu suport Wake-On-LAN pentru utilizarea functiei Wake-On-LAN (doar la TE100-PCIWN)
3. un procesor 300 MHz si 32 MB RAM in computer (recomandat)
4. Windows 98/98SE/ME/2000/XP/2003 instalat pe computer
5. un cablu de Ethernet RJ-45

2. Instalare fizica

Instalati adaptorul de retea

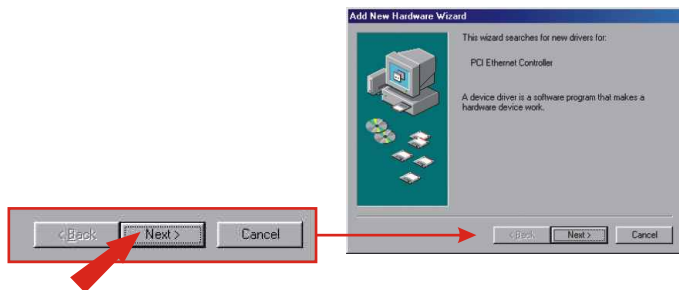
1. Opriti computerul.
2. Deschideti carcasa computerului pentru a capata acces la placa de baza si la sloturile de extindere. (va rugam sa va referiti la manualul computerului dumneavoastra daca aveti nevoie de ajutor in manevrarea carcasei)
3. Introduceti adaptorul de retea TE100-PCIWN sau TE100-PCIWA intr-unul din sloturile PCI libere de pe placa de baza. Apasati in jos ferm si uniform pe placa pana cand intra in loc.
4. If you would like to use the Wake-On-LAN feature, connect the included Wake-On-LAN cable to the motherboard's Wake-On-LAN connector. (For TE100-PCIWA only)
5. Fixati cu surub bratul metalic al placii PCI pe carcasa cu un surub.
6. Inchideti carcasa computerului si restartati computerul.
7. Conectati cablul Ethernet RJ-45 la portul Ethernet al TE100-PCIWN sau TE100-PCIWA si la reseaua existenta 10/100Mbps Fast Ethernet sau la modemul Cablu/DSL.
8. Porniti computerul.



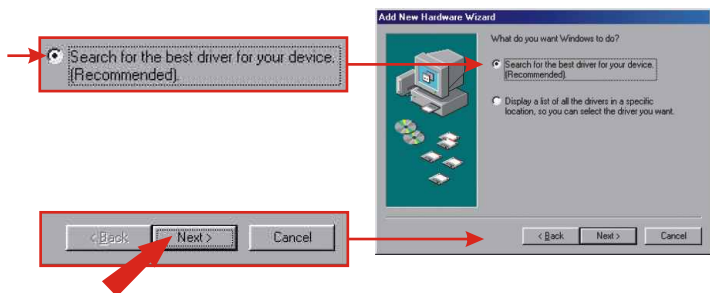
3. Instalare drivere

Windows 98/98SE

1. După ce calculatorul dumneavoastră se restartează, va apărea "Add New Hardware Wizard". Dați click pe **Next**.

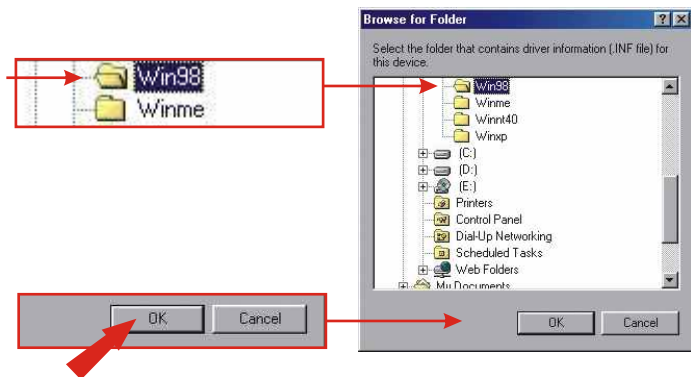


2. Introduceți discheta cu driverele seria TE100-PCIW furnizate în floppy-ul computerului. Asigurați-vă că **Search for the best driver for your device** este selectat și dați click pe **Next**.

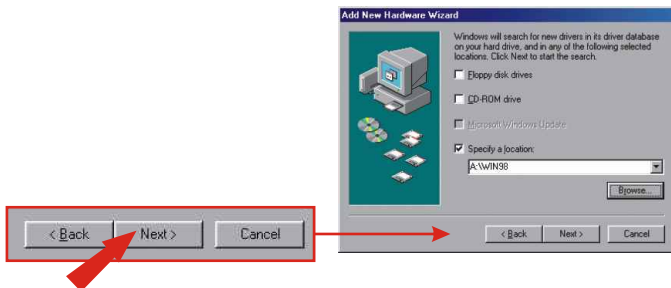


3. Selectați **Specify a location** și dați click pe **Browse**.

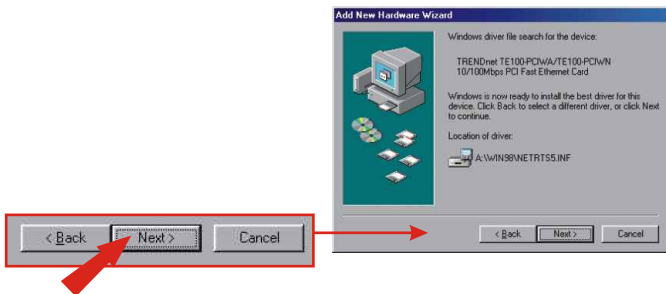
4. Dati dublu-click pe unitatea floppy (in general: **3 1/2 Floppy (A:)**). Selectati folderul numit **Win98** si dati click pe **OK**.



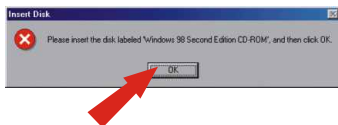
5. Dati click pe **Next**.



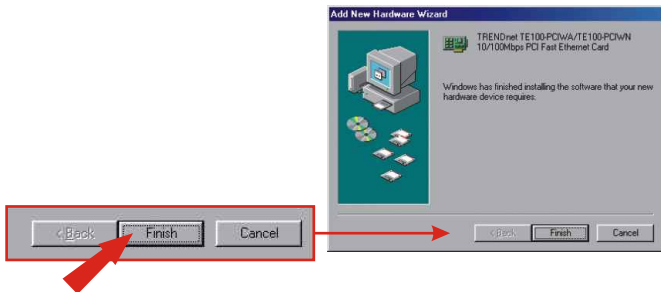
6. Odata ce Wizard-ul va spune ca este “ready to install the best driver,” adica “gata sa instaleze cel mai bun driver” dati click pe **Next** pentru a initia instalarea driverului.



7. Se poate intampla sa vi se ceara CD-ul Windows 98. Daca se intampla aceasta, introduceti CD-ul Windows 98 in unitatea CD-ROM si dati click pe **OK**.



8. Dati click pe **Finish** pentru a completa instalarea driverului.



9. Dati click pe **Yes**. Computerul va fi updatat cu noile setari.paramètres.

Nota: Daca aceasta fereastra de mai jos nu apare, trebuie sa restartati manual computerul.



Windows ME/2000/XP

1. Windows va detecta automat si instala driverul corect pentru adaptorul dumneavoastra de retea.

Felicitari!
Instalatia este acum completata.

Troubleshooting

Q1. Windows doesn't recognize my new hardware. What should I do?

A1. Go to **Start > Control Panel > System > Device Manager.** (**Start > Control Panel > System > Hardware > Device Manager** in Windows 2000/XP) In the list of device-types, locate and double-click **Network Adapters.** If you see a device with a yellow question mark or exclamation point over it, double-click it. Click the **Driver** tab, and click **Update Driver.** Follow the Hardware Update Wizard's instructions to update your computer with the driver on the included floppy disk.

If the Device Manager fails to recognize the presence of a new networking adapter, you should ensure that your network adapter is firmly seated in its PCI slot. You may also choose to move the adapter to a different PCI slot.

Q2. Windows recognizes my new hardware, but I'm unable to connect to my network. What should I do?

A2. Verify that the RJ-45 Ethernet Cable is securely connected from your switch/router to your network card and that the TE100-PCIWN or Te100-PCIWA's link LED is lit. Also, ensure that the TCP/IP settings are set to **Obtain an IP address automatically.**

If you still encounter problems, please feel free to contact TRENDware's technical support team.

Certifications

This equipment has been tested and found to comply with FCC and CE Rules. Operation is subject to the following two conditions:

- (1) This device may not cause harmful interference.
- (2) This device must accept any interference received, including interference that may cause undesired operation.

NOTE: THE MANUFACTURER IS NOT RESPONSIBLE FOR ANY RADIO OR TV INTERFERENCE CAUSED BY UNAUTHORIZED MODIFICATIONS TO THIS EQUIPMENT. SUCH MODIFICATIONS COULD VOID THE USER'S AUTHORITY TO OPERATE THE EQUIPMENT.





What's Next in Networking

Product Warranty Registration

Please take a moment to register your product online.
Go to TRENDware's website at <http://www.TRENDNET.com>

TRENDnet Technical Support

US/Canada Support Center

Contact

Telephone: 1(310) 626-6252

Fax: 1(310) 626-6267

Email: support@trendnet.com

Tech Support Hours

7:30am - 6:00pm Pacific Standard Time

Monday - Friday

European Support Center

Contact**Telephone**

Deutsch : +49 (0) 6331 / 268-460

Français : +49 (0) 6331 / 268-461

Español : +49 (0) 6331 / 268-462

English : +49 (0) 6331 / 268-463

Italiano : +49 (0) 6331 / 268-464

Dutch : +49 (0) 6331 / 268-465

Fax: +49 (0) 6331 / 268-466

Tech Support Hours

8:00am - 6:00pm Middle European Time

Monday - Friday

TRENDware International, Inc.

3135 Kashiwa Street. Torrance, CA 90505

<http://www.TRENDNET.com>