

## Quick Installation Guide



TE100-PCIFC  
1.01

# Table of Contents

Français .....	1
1. Avant de commencer .....	1
2. Procéder à l'installation .....	2
Troubleshooting .....	5

# 1. Avant de commencer



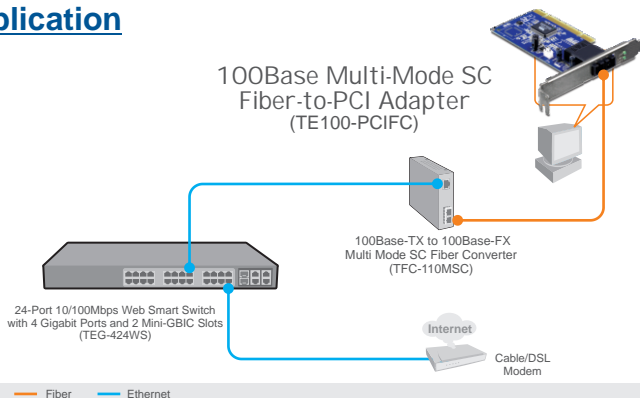
## Contenu de l'emballage

- TE100-PCIFC
- CD-Pilote
- Guide d'installation rapide en plusieurs langues

## Systeme Requis

- Logement 2.2 PCI 32 bits
- Lecteur de CD-ROM
- Microprocesseur : 300 MHz ou supérieur/ 800 MHz ou supérieur (Windows Vista)
- Mémoire: Minimum 256MB RAM / 512MB RAM ou moins (Windows Vista)
- Windows 98SE/ME/2000/2003 Server (32/64-bit) / XP(32/64-bit) / Vista (32/64-bit)
- Câble fibre multi mode 62,5/125 µm
- Convertisseur fibre recommandé : TFC-110MSC ou TFC-210MSC
- Switch Gigabit recommandé : TEG-424WS

## Application



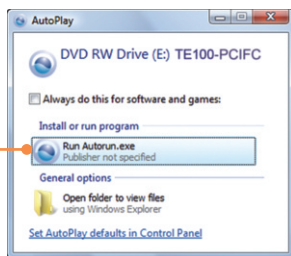
## 2. Procéder à l'installation

### Remarque :

1. Pour l'installation des pilotes sur Windows 98SE et Me, veuillez consulter le guide de l'utilisateur sur le CD-ROM avec le pilote.
2. Ne branchez pas le TE100-PCIFC à votre ordinateur avant d'en recevoir la consigne.

1. Insérez le CD-ROM avec le pilote dans votre lecteur de CD-ROM.

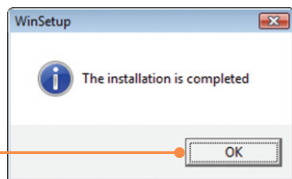
2. Cliquez sur Run Autorun.exe (Windows Vista uniquement).



3. Cliquez sur Install Driver (Installer le pilote) et ensuite sur votre système d'exploitation.



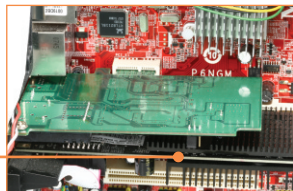
4. Cliquez sur OK.



5. Eteignez votre ordinateur et ouvrez le boîtier de votre ordinateur.



6. Insérez fermement la carte PCIe dans un logement PCIe libre, allumez ensuite l'ordinateur et attendez que le bureau Windows apparaisse.



7. Les pilotes s'installeront automatiquement.

## Branchement du TE100-PCIFC à votre réseau

1. Connectez un câble multimode de type SC entre le TE100-PCIFC et un convertisseur fibre 10/100Mbps (p. ex. TFC-110MSC).

Remarque : Assurez-vous que les câbles TX et RX sont inversés sur les connexions opposées.

2. Branchez un câble Ethernet entre le convertisseur fibre et un port Ethernet Gigabit de votre switch (p. ex. le TEG-424WS).



L'installation est maintenant complète.

Pour obtenir des informations détaillées sur la configuration et les paramètres de configuration avancés du TE100-PCIFC, veuillez consulter le Guide de l'utilisateur sur le CD-ROM.

### Enregistrez votre produit

Afin d'être sûr de recevoir le meilleur niveau de service clientèle et le meilleur support possibles, veuillez prendre le temps d'enregistrer votre produit en ligne sur:

[www.trendnet.com/register](http://www.trendnet.com/register)

Nous vous remercions d'avoir choisi Trendnet

**Q1:** I inserted the Driver CD-ROM into my computer's CD-ROM drive and the installation menu does not appear automatically. What should I do?

**A1:** For Windows 2000/XP/2003 Server, if the installation menu does not appear automatically, click Start, click Run, and type D:\autorun where "D" in "D:\autorun.exe" is the letter assigned to your CD-ROM Drive, and then press the ENTER key on your keyboard. For Windows Vista, if the installation menu does not appear automatically, click Start, click the Start Search box, and type D:\autorun.exe where "D" in "D:\autorun.exe" is the letter assigned to your CD-ROM Drive, and then press the ENTER key on your keyboard.

**Q2:** Windows doesn't recognize my new hardware. What should I do?

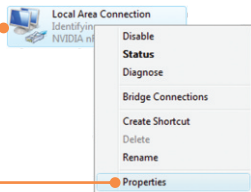
**A2:** First, verify that your computer meets the system requirements as specified in Section 1. Second, access your device manager to make sure the adapter is installed properly. If you see a networking device with a yellow question mark or exclamation point, you will need to reinstall the device and/or the drivers. To access the device manager on Windows 2000/XP, right-click My Computer, click Properties, click the Hardware tab, and then click Device Manager. To access the device manager on Windows Vista, right-click Computer, click Properties and then click Device Manager. Third, if the device manager fails to recognize the presence of a new networking adapter, verify that the network adapter is firmly seated in the PCI slot. Fourth, plug the adapter into another PCI slot on your computer.

**Q3:** Windows recognizes my new hardware, but I'm unable to connect to my network. What should I do?

**A3:** First, verify that the cable is securely connected from your switch or router to your network adapter. Second, verify that the LEDs on your network card are lit. Third, verify that the TCP/IP settings are set to Obtain an IP address automatically (see the steps below).

## Windows Vista

1. Go into the Control Panel, click Network and Internet, click Network and Sharing Center, click Manage Network connections and then right-click the Local Area Connection icon and then click Properties.



2. Click Internet Protocol Version 4(TCP/IPv4) and then click Properties. Then click on Obtain an IP address automatically.

## Windows XP/2000

1. Go into the Control Panel, double-click the Network Connections icon and then right-click the Local Area Connection icon and then click Properties.



2. Click Internet Protocol (TCP/IP) and then click Properties. Then click on Obtain an IP address automatically.

**Q4:** I am not getting a network connection when I connect the TE100-PCIFC to my network. What should I do?

**A4:** First, check the fiber cable. Make sure you are using 62.5/125 $\mu$ m multi-mode fiber cable. Second, make sure the TX and RX cables are reversed on the opposing connection.

**Q5:** What is the maximum distance that is supported by the adapter?

**A5:** 2 kilometers.

If you still encounter problems or have any questions regarding the TE100-PCIFC, please refer to the User's Guide included on the Driver CD-ROM or contact TRENDnet's Technical Support Department.



## Certifications

This equipment has been tested and found to comply with FCC and CE Rules.

Operation is subject to the following two conditions:

- (1) This device may not cause harmful interference.
- (2) This device must accept any interference received. Including interference that may cause undesired operation.



Waste electrical and electronic products must not be disposed of with household waste. Please recycle where facilities exist. Check with you Local Authority or Retailer for recycling advice.



**NOTE:** THE MANUFACTURER IS NOT RESPONSIBLE FOR ANY RADIO OR TV INTERFERENCE CAUSED BY UNAUTHORIZED MODIFICATIONS TO THIS EQUIPMENT. SUCH MODIFICATIONS COULD VOID THE USER'S AUTHORITY TO OPERATE THE EQUIPMENT.

### ADVERTENCIA

En todos nuestros equipos se mencionan claramente las características del adaptador de alimentación necesario para su funcionamiento. El uso de un adaptador distinto al mencionado puede producir daños físicos y/o daños al equipo conectado. El adaptador de alimentación debe operar con voltaje y frecuencia de la energía eléctrica domiciliar existente en el país o zona de instalación.



**TRENDnet**®

## Product Warranty Registration

Please take a moment to register your product online.  
Go to TRENDnet's website at <http://www.trendnet.com/register>

**TRENDnet**®

20675 Manhattan Place  
Torrance, CA 90501  
USA