

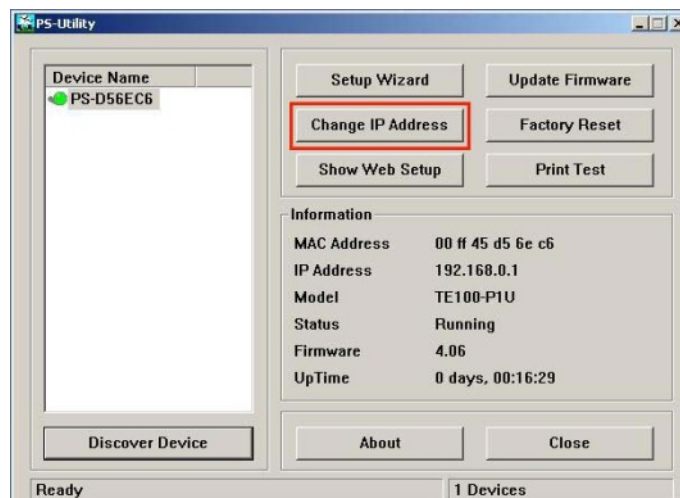
# TE100-P21 F.A.Q.

## Q: Why doesn't PS-Utility detect my print server?

**A:** If you are using Windows XP you will have to disable the built in firewall. But for all operating systems you have to disable any other form of firewall software such as Norton Internet Security, Black Ice, and Zone Alarm.

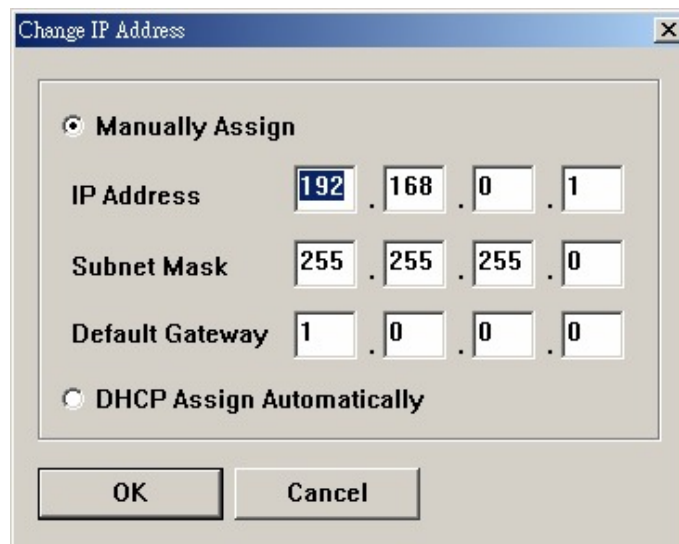
## Q: How do I change the IP address of my print server?

**A: Step 1.** Open up the PS-Utility and click on Change IP Address.



### Step 2. Change IP Address:

Click this button to bring up the following dialog box, allowing you to change the IP Address. In this dialog box, you can select either **Manually Assign** or **DHCP Assign Automatically**. When completed, click OK.



# TE100-P21 F.A.Q.

## Q: How do I find the Port Name of the Print Server?

**A:** First, launch your web browser (such as the Internet Explorer 6.0 used in this manual). Then, type `http://192.168.0.1` (the default IP address) in the Address bar and press [Enter] to enter the Management screen of the Configuration Utility. Or use the IP address that you manually assigned to the Print Server. Click on System and the Printer Name is the PS-xxxxxx-U1, U2, or P3. X being the actual number listed in the Printer Name box. Please write this information down on a piece of paper for future reference.

The screenshot displays the Management screen of the TRENDnet TE100-P21 Configuration Utility. The interface includes a navigation menu on the left with options: Management, System, Wireless, Network, and User. The main content area shows system information (IP Address: 192.168.1.207, Up Time: 0 days, 00:08:53) and a 'Printer Status' section. This section lists three printer ports: USB1, USB2, and LPT3. Each port's status is detailed, including printer name, speed, status, and printing statistics. The printer names are highlighted with red boxes: PS-589228-U1 for USB1, PS-589228-U2 for USB2, and PS-589228-P3 for LPT3.

Port	Printer Name	Printer Speed	Printer Status	Total Print Jobs	Total Print Size	Printing Status
USB1	PS-589228-U1	Full Speed (12M bps)	Off line	0	0 KBytes	Idle
USB2	PS-589228-U2	Full Speed (12M bps)	Off line	0	0 KBytes	Idle
LPT3	PS-589228-P3	High	Off line			

# TE100-P21 F.A.Q.

## Q: How do I install my printer on Windows 95/98/ME?

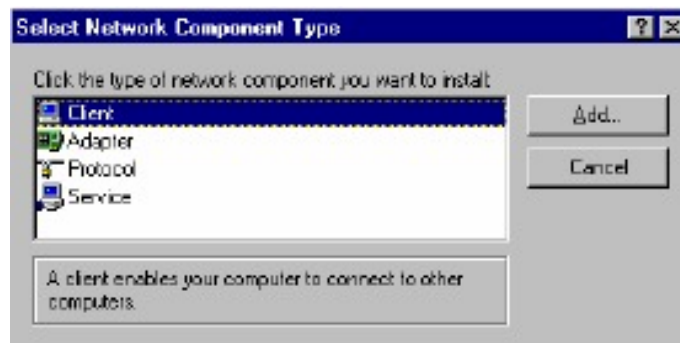
**A:** In Windows 98/Me you will need to install the LPR client.

For Windows 98/ME you will also need to know the port name that you are printing to (The Port Name is the PS-xxxxxx-U1, U2, or P3. X being the actual number listed in the Port Name box).

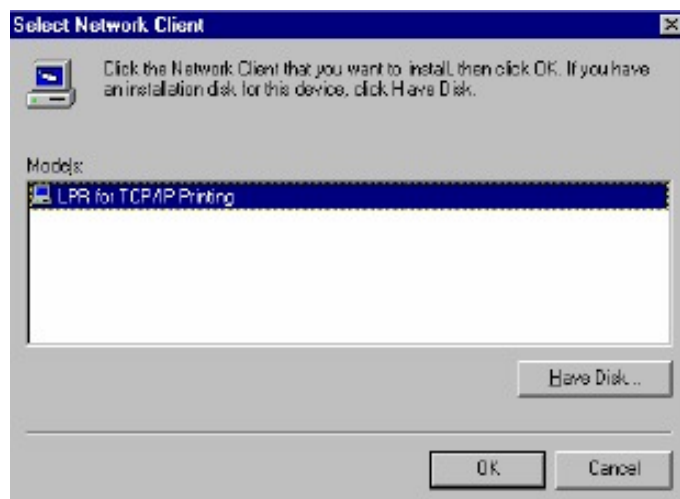
### Installing LPR:

**Step 1.** Once the file is downloaded and extracted, Go to **Start > Settings > Control Panel >** double-click on **Networks**. Click on **Add**.

**Step 2.** Highlight **Client** and click on **Add**.



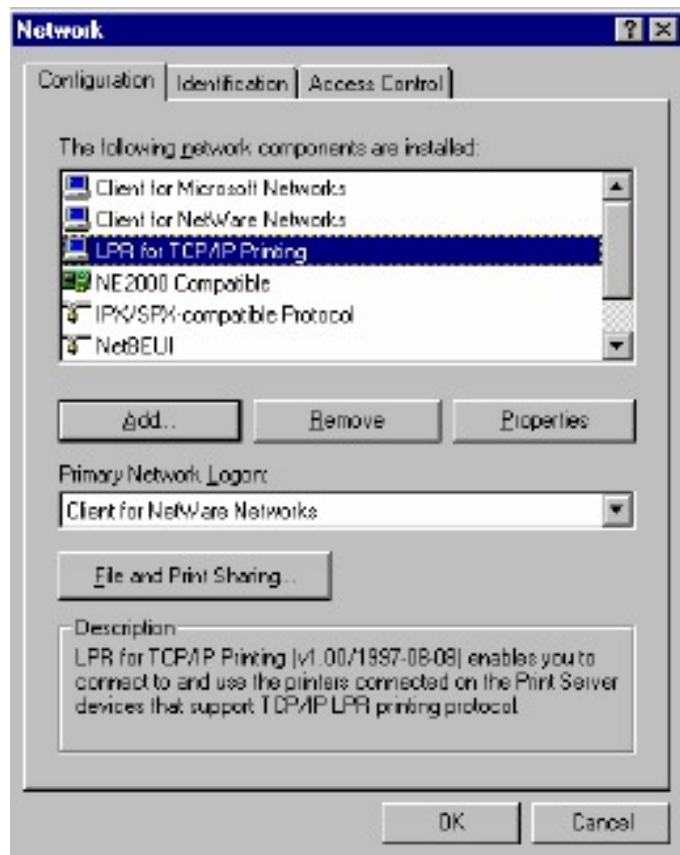
**Step 3.** Click on **Have Disk > Browse**. Browse to the location of the extracted LPR Client.



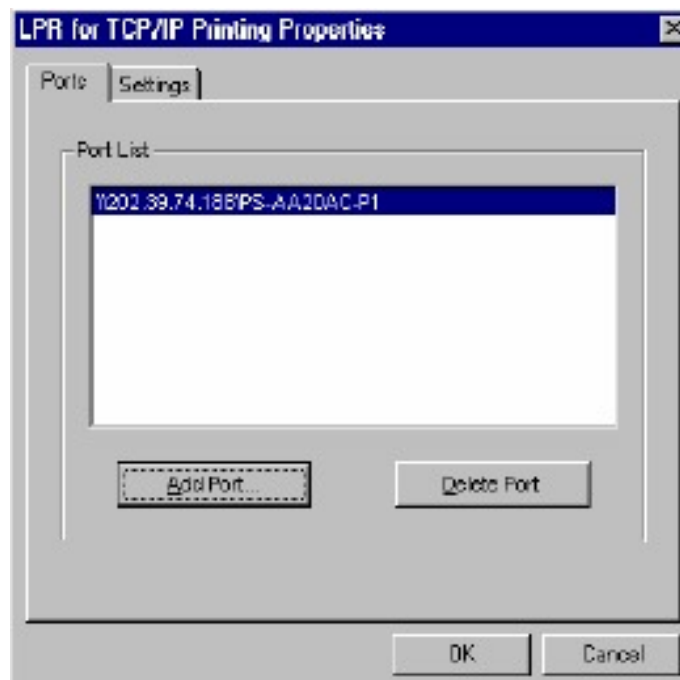
# TE100-P21 F.A.Q.

**Step 4.** Click **OK** 3 times.

**Step 5.** From the list highlight **LPR For TCP/IP** and click on **Properties**.

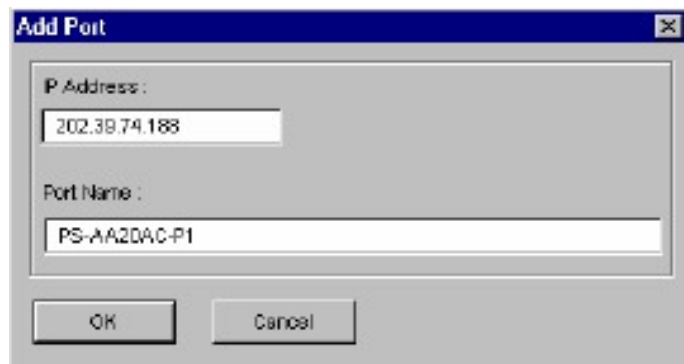


**Step 6.** Click on **Add Port**.



# TE100-P21 F.A.Q.

In the top field type in the IP address of your print server. In the bottom field type in the port name of your print server, For the TEW-P1P/U the port name is lp1. For the P2U1P the port names are lp1 for the parallel, lp2 for the top USB and lp3 for the bottom USB. Click on “**OK**”.



**Step 7.** Click on **OK**. Windows will ask you to restart. Click **Yes**.

LPR is now properly installed on your computer.

## Printer Installation

**Step 1.** Open your printers folder. Go to **Start > Settings > Printers**.

**Step 2.** Double-click on the **Add Printer** icon which will launch the Add Printer Wizard.



# TE100-P21 F.A.Q.

Select **Network Printer** and click on **Next**.

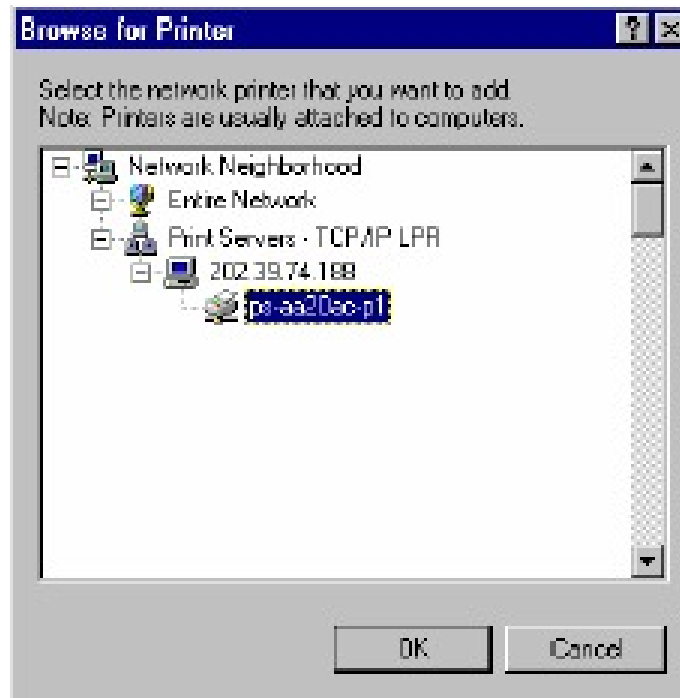


**Step 3.** Click on the **Browse** button and browse to the print server.



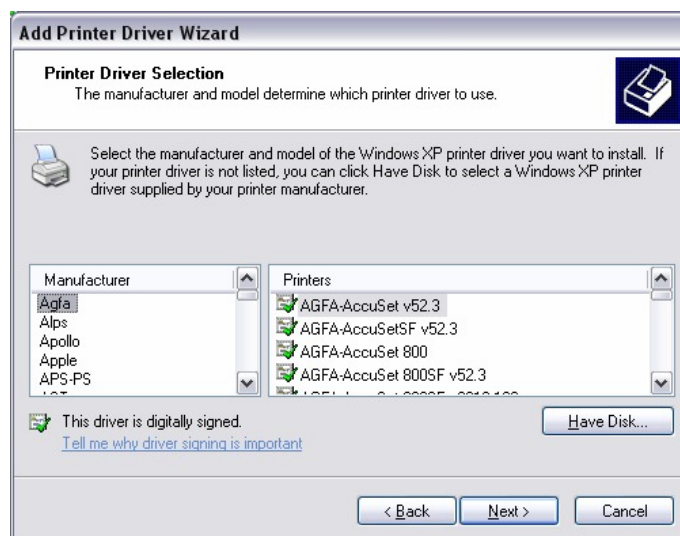
# TE100-P21 F.A.Q.

Highlight the Print Server and click on **OK** to return to the Add Printer Wizard.



Click on **Next**. If you are unable to do this you can manually enter the Print Server by using two backslashes, the IP address, one backslash and the port name of your printer.

**Step 4.** You will now be asked to select a printer to install.



# TE100-P21 F.A.Q.

If you can not find your printer from the list, click on the **Have Disk** button and browse to the printer drivers for your printer (floppy, CD, or downloaded).

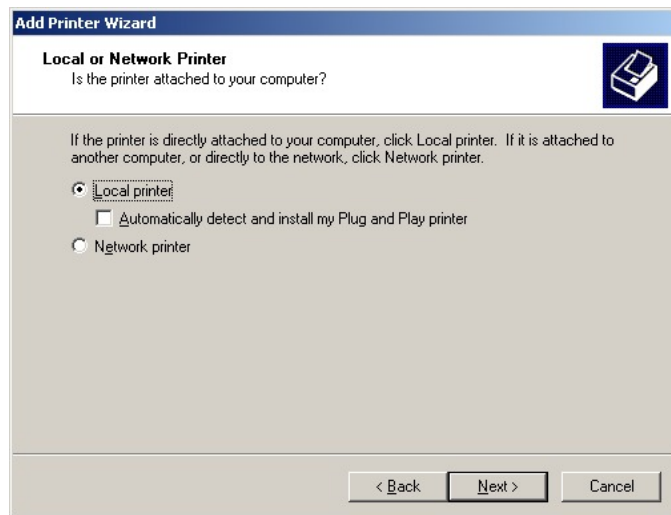
- Step 5.** If you find your printer in the list, click on it and then click on **OK**. Windows will install the drivers.
- Step 6.** Once the drivers been installed, click **Finish** to complete the installation. You may be prompted for your Windows CD. If you are prompted for the CD, browse to the Win98 folder on the Windows CD and click on **OK**
- Step 7.** After the drivers have been installed for your printer, you will be prompted to print a test page. Select **Yes** and click on **Finish**.

---

## Q: How do I install my printer on Windows 2000/XP?

**A: Step 1.** Go to **Start>Settings>Printers>Add New Printer** (Win XP - **Start>Printers and Faxes>Add a Printer**).

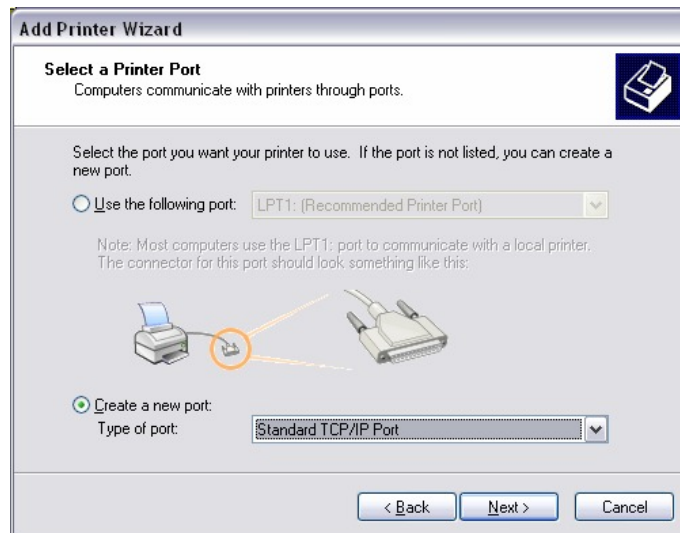
**Step 2.** Select **Local Printer**. Make sure to uncheck **Automatically detect and install my plug and play printer**. Click **Next**.



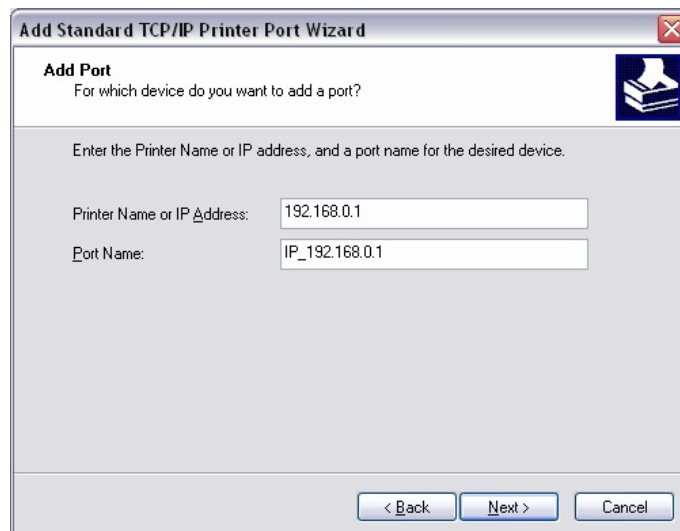


# TE100-P21 F.A.Q.

**Step 3.** Select **Create a New Port** and select **Standard TCP/IP port**. Click **Next**.



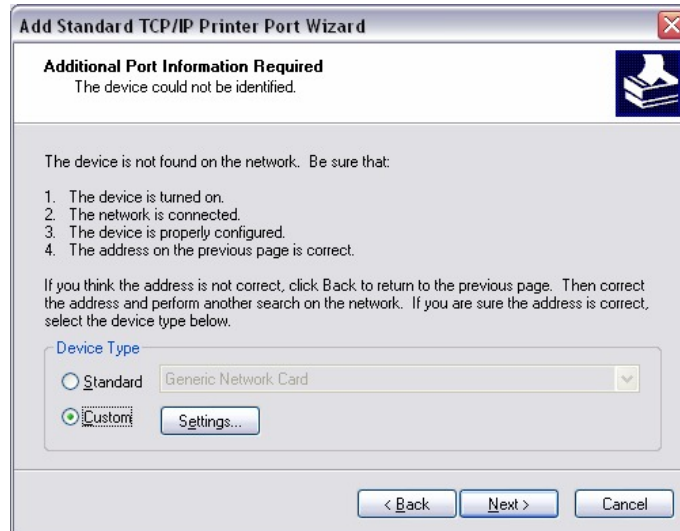
**Step 4.** Enter the IP address of the router (192.168.0.1). Leave the port name with the default name. Click **Next**.



# TE100-P21 F.A.Q.

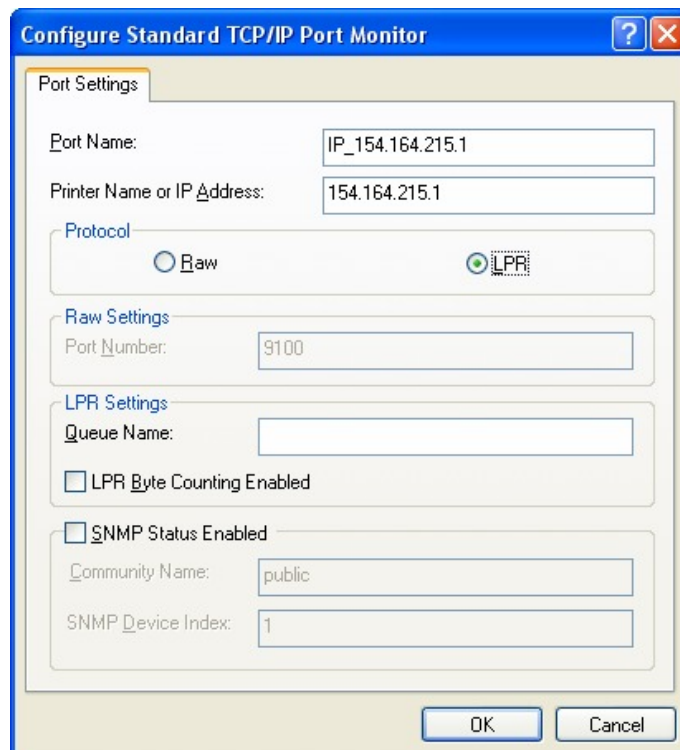
**Step 5.** You will get a message saying that additional port information required.

**Step 6.** Select **Custom** and then click **Settings**.



**Step 7.** Set Protocol to **LPR**.

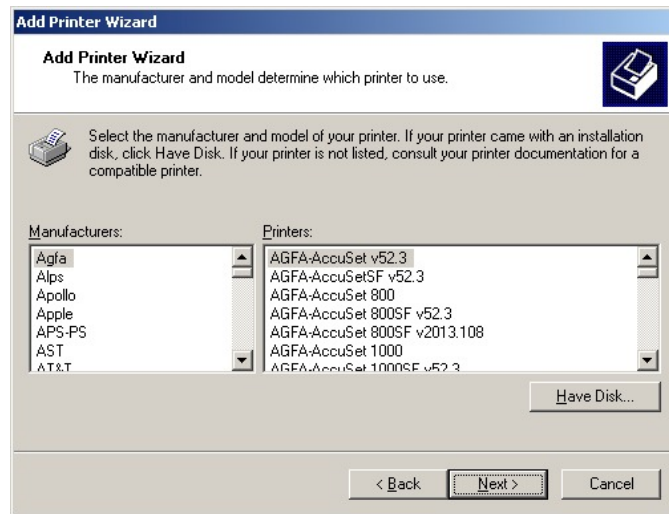
**Step 8.** For the **LPR Settings** the Te100-P1P/U the port name is L1 It is case sensitive! (LP lower-case). In most cases, check **LPR Byte Counting Enabled**. If you cannot print, then try un-checking this.



# TE100-P21 F.A.Q.

**Step 9.** Select **OK > Finish**.

**Step 10.** Continue with the **Add Printer Wizard**. Choose your printer from the list or click **Have Disk** and point to your printer driver disk.



---

**Q: Does the TE100-P21, TEW-P1U/P support Macintosh operating systems?**

**A:** Yes, but you must assign the print server an IP address from a Windows based operating system first. Once that is done you can use LPR or LPD printing for the Macs and you can manage the print server by entering its IP address into a web browser. Also the printer must be a postscript printer.

---

**Q: What are the queue names of the TE100-P21?**

**A:** The queue name will be PS-xxxxxx-U1, U2 or P3 depending on the port that you have the printer plugged into. X being the actual number listed in the Port Name box. It is case sensitive.

---

**Q: Why can't I see my printer status information?**

**A:** Print servers are IEEE1284 bi-directional compatible. This means that data can be sent and received in both directions between the printer and the print server.

Toner status, paper level, etc., will not be communicated back to the PC. In order to get printer status information, the proprietary printer driver has embedded code that needs to be passed on to the print server, decoded, then interpreted by the print server. Trendware print servers do not support embedded driver codes. Trendware print servers, whether in Gateways or Stand Alone, are plain TCP/IP print servers.

# TE100-P21 F.A.Q.

**Q: Why is my parallel printer, printing a lot of garbage characters?**

**A:** Make sure that you have the latest print drivers for you printer.

Launch your web browser (such as the Internet Explorer 6.0 used in this manual). Then, type <http://192.168.0.1> (the default IP address) in the Address bar and press [Enter] to enter the Management screen of the Configuration Utility. Or use the IP address that you manually assigned to the Print Server. Go to Configuration on the top menu bar and System on the side bar. Change the Speed to Low and Save.

The screenshot shows the configuration utility for the TE100-P21 device. The interface includes a navigation menu with 'Management', 'Configuration', 'Tools', and 'Help'. The 'Configuration' section is active, with a sidebar menu containing 'System', 'Network', 'User', 'E-mail', and 'SNMP'. The main content area is divided into 'System Device' and 'Port Setting' sections. The 'System Device' section includes fields for Server Name (PS-567767), Location, Admin Contact, Password (New Password), and Confirm Again. The 'Port Setting' section lists three ports: USB1, USB2, and LPT3. Each port has fields for Port Name, Description, P.J.L. Printer (set to 'No'), and Speed. The Speed dropdown for the LPT3 port is highlighted with a red box and set to 'High'. At the bottom of the form are 'Save' and 'Cancel' buttons.

Port	Port Name	Description	P.J.L. Printer	Speed
USB1	PS-567767-U1		No	
USB2	PS-567767-U2		No	
LPT3	PS-567767-P3		No	High