



User's Guide

TE100-P1U

TABLE OF CONTENTS

ABOUT THIS GUIDE.....	4
INTRODUCTION.....	5
PACKAGE CONTENTS	6
SYSTEM REQUIREMENTS.....	6
GENERAL FEATURES	7
PRODUCT VIEW.....	8
HARDWARE INSTALLATION.....	10
NETWORKING APPLICATION	10
INSTALLING THE PRINT SERVER.....	11
USING THE UTILITIES	12
AUTO-RUN INSTALLATION	13
PS-UTILITY.....	14
<i>Installing PS-Utility</i>	<i>14</i>
<i>Using PS-Utility.....</i>	<i>15</i>
PS WIZARD.....	18
WEB CONFIGURATION.....	24
WEB CONFIGURATION UTILITY	24
HOME.....	25
SETUP WIZARD	26
<i>Second HTTP Port.....</i>	<i>28</i>
<i>Save to Print Server.....</i>	<i>28</i>
CHANGE IP ADDRESS.....	30
PRINTER INFORMATION.....	31
FACTORY RESET	32
FIRMWARE UPGRADE.....	33
ABOUT	34
PRINTING IN WINDOWS 95/98/ME	35
INSTALLING THE LPR FOR TCP/IP PRINTING CLIENT	36

ADDING LPR PRINTER PORTS	38
PRINTING FROM WINDOWS 95/98/ME	40
SETTING TCP/IP PRINTING SETTINGS	43
PRINTING IN WINDOWS 2000/XP/VISTA	45
SETTING UP WINDOWS 2000 TCP/IP PRINTING	45
SETTING UP WINDOWS XP TCP/IP PRINTING	53
SETTING UP WINDOWS VISTA TCP/IP PRINTING	62
PRINTING IN MAC OS	68
RENDEZVOUS USES IN MAC OS 10.2	68

ABOUT THIS GUIDE

This manual provides instructions and illustrations on how to use your TE100-P1U USB 2.0 Print Server, including:

- Chapter 1, **Introduction**, provides the general information on the product.
- Chapter 2, **Hardware Installation**, describes the hardware installation procedure for the product.
- Chapter 3, **Using the Utilities**, helps you to install and use the software.
- Chapter 4, **Web Configuration**, completes the configuration using the web browser.
- Chapter 5, **Printing in Windows XP**, lets you complete printing task through your print server in Windows XP environment.
- Chapter 6, **Printing in MAC OS**, lets you complete printing task through your print server in MAC OS environment.

Please note that the illustrations or setting values in this manual are **FOR YOUR REFERENCE ONLY**. The actual settings and values depend on your system and network. If you are not sure about the respective information, please ask your net work administrator or MIS staff for help.

1

INTRODUCTION

Congratulations on purchasing your TE100-P1U USB 2.0 Print Server, the easiest and fastest way to deploy printers on your network.

This compact print server can connect your network through an Access Point under the infrastructure mode, or can be used in ad-hoc mode for direct communication between PC/Notebook and print server anywhere you wish to locate printer services. It manages the flow of print files from your workstation or file server to its connected printers, delivering print jobs to high-performance printers much faster than a file server or a PC acting as a print server can.

The pocket-sized Print Server features a Web-based Configuration Utility, which allows you to set up the print server through the web browser easily and quickly. It also includes a simple software utility **PS-Utility**, a user-friendly program that allows you to complete settings for the print server.

Package Contents

Unpack the package and check all the items carefully, and be certain that you have:

- ◆ One TE100-P1U
- ◆ One AC Power Adapter suitable for your country's electric power service.
- ◆ One Quick Installation Guide.
- ◆ One Installation CD-ROM containing the PS-Utility program and the User's Guide.

If any item contained is damaged or missing, please contact your local dealer immediately. Also, keep the box and packing materials in case you need to ship the unit in the future.

System Requirements

- ◆ Operating System:
 - Microsoft Windows 95/98/ME/NT/2000/XP/2003/Vista.
 - Apple Mac OS X or above
- ◆ For Web Configuration:
 - Java-enabled web browser, such as Microsoft® Internet Explorer 5.0 and Netscape Navigator 6.0.

General Features

- ◆ Compliant with USB 2.0 Hi-Speed printing
- ◆ Equipped 10/100 Auto-MDIX Fast Ethernet LAN port
- ◆ Multi protocol support is ideal for shared printing in mixed-LAN environments
- ◆ Windows-based program makes it possible to set up in a few minutes.
- ◆ Offer LPR program for Windows 95/98/Me TCP/IP printing
- ◆ Supports DHCP IP assign function
- ◆ Supports Web configuration
- ◆ Provides Flash memory for easy firmware upgrading
- ◆ Supports IPP for Windows 2000/XP/Vista
- ◆ Supports second http port for remote web configuration and IPP printing.
- ◆ Supports Mac OS 10.2 “Rendezvous” zero-configuration feature

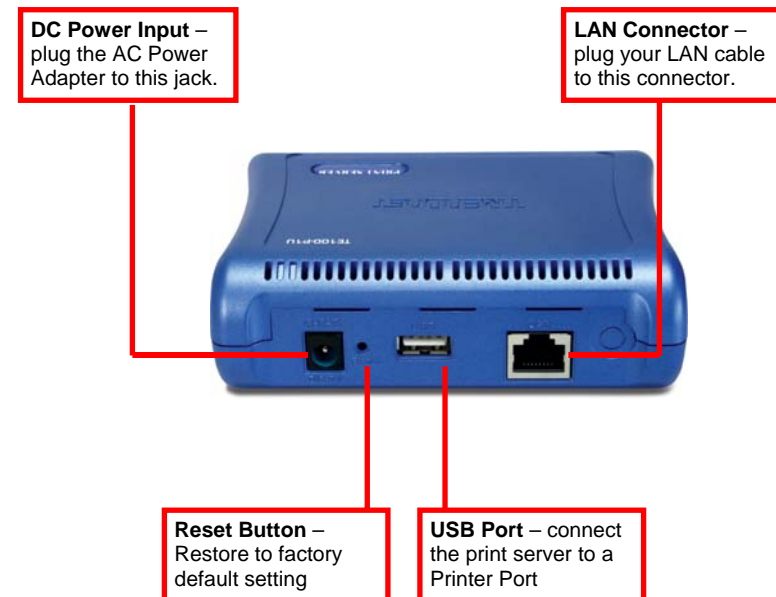
Product View

This section describes the externally visible features of the print server.

Front View



Rear View



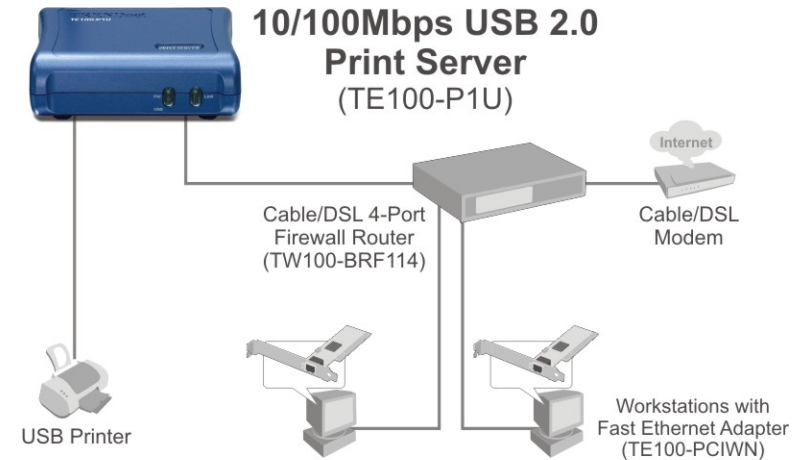
* There are three green LED indicators on the rear panel:

LEDs	Description
Power	Steady light confirms that the Print Server is powered on.
USB	When it is blinging, the connected printer is printing
Link/Act	Steady light confirms that the print server has a good connection to your network. When it is blinking (briefly dark), the print server is receiving/ transmitting data from/to the network.

HARDWARE INSTALLATION

Networking Application

The following diagram explains the application of your print server.



*Mac Systems are only compatible with Post-Script printers

Installing the Print Server

Follow these steps for a trouble-free start of print server operations with your TE100-P1U USB 2.0 Print Server.

1. Confirm proper operation of the printer to be connected to the print server.
2. When you have confirmed proper operation of the printer, turn off the power.
3. Confirm that your network is operating normally.
4. Connect the print server to the network (through the RJ-45 connector of the print server).
5. While the printer is powered off, connect the print server to the printer's port.
6. Turn on the printer's power.
7. Connect the DC end of the AC Power adapter to the DC power input socket of the print server and the AC end to the wall outlet. This will supply power to the print server immediately.

NOTE: The printer default IP address. To prevent from any conflict in your network, it is recommended to use the PS-Utility program to change the IP setting when there is some other device's IP Address is the same as the print server's default IP Address.

USING THE UTILITIES

This chapter describes the software utilities for the print server, including how to set up your print server with these utility. The **PS-Utility** is designed with a user-friendly interface that allows you to set up and administer the print server easily.

Auto-Run Installation

Insert the Installation CD-ROM into your computer's CD-ROM drive to initiate the Auto-Run program, and the menu screen will appear as below.



- **PS Wizard** – click to setup printer port connectivity
- **Utility** – click to install PS-Utility. Please refer to the next section for detailed information on installing the utility.
- **User's Guide** – click to preview the *User's Guide* in PDF format for detailed information of the Print Server.
- **Product Registration**– click to register your product on-line
- **Exit** – click to close the Auto-Run program.

PS-Utility

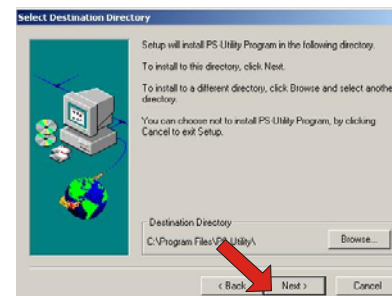
To avoid the conflict in your network, you can use PS-Utility to change the related settings of your print server (such as the IP address) after finishing the installation.

Installing PS-Utility

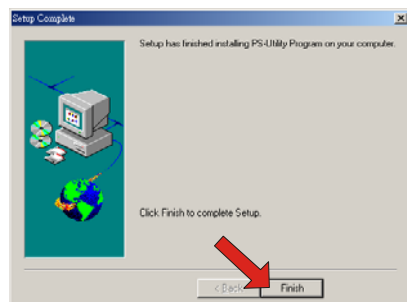
1. Click **Install Utility** from the Auto-Run menu screen. Once executed, the Setup program will extract files to launch the InstallShield Wizard; then, click **Next >** in the welcome screen of InstallShield Wizard.



2. Choose the destination location. If no specific requirement, leave the default setting and click **Next >**.



3. The InstallShield Wizard starts to install the software, and the Progress bar indicates the installation is proceeding.
4. When completed, click **Finish**.

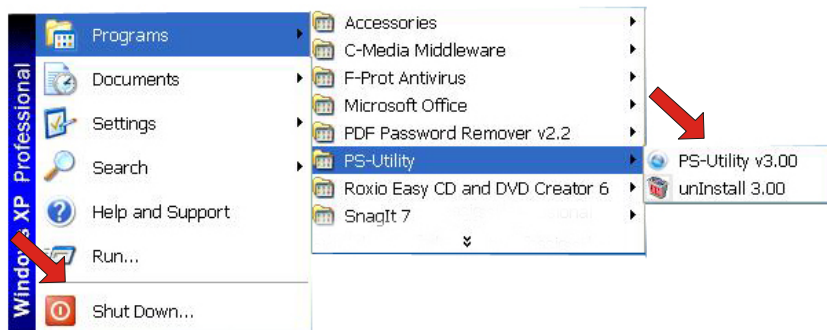


After installing the utility, the application program for the print server is automatically installed to your computer, and creates a folder in **Start\Programs\PS-Utility**.

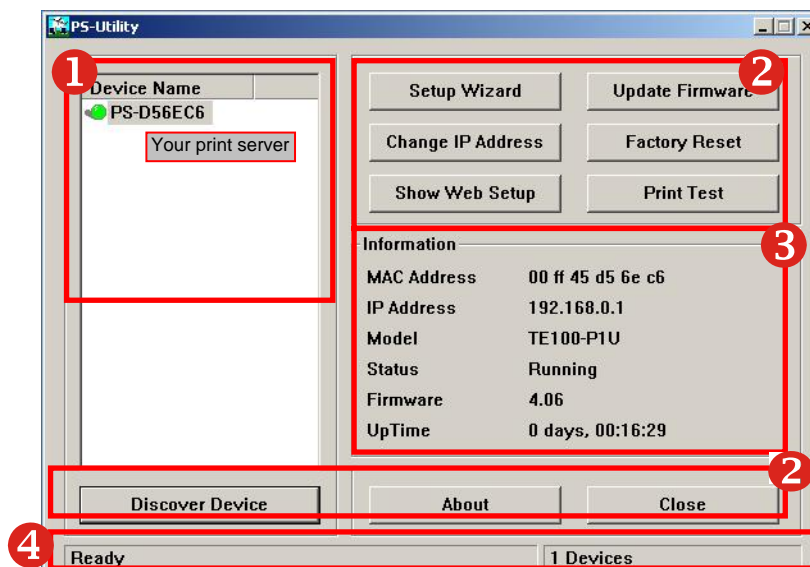
Using PS-Utility

This section describes the operation of PS-Utility. To launch PS-Utility:

1. Click **Start -> Programs -> PS-Utility**, and then click the **PS-Utility** item.



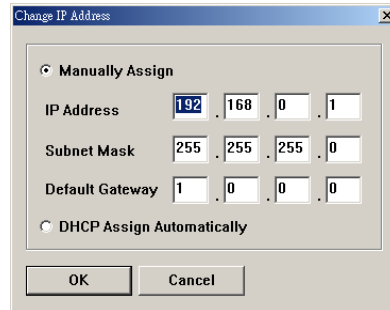
2. The main screen will appear as below, and it starts to search the connected print server within the network.



Component Features:

- 1 **Device List:** Display the connected print server within the network.
- 2 **Control Buttons**

- **Change IP Address:** Click this button to bring up the following dialog box, allowing you to change the IP Address. In this dialog box, you can select either *Manually Assign* or *DHCP Assign Automatically*. When completed, click **OK**.



The dialog box titled "Change IP Address" has a close button (X) in the top right corner. It contains two radio buttons: "Manually Assign" (selected) and "DHCP Assign Automatically". Below the radio buttons are three rows of input fields: "IP Address" with values 192, 168, 0, 1; "Subnet Mask" with values 255, 255, 255, 0; and "Default Gateway" with values 1, 0, 0, 0. At the bottom are "OK" and "Cancel" buttons.

- **Update Firmware:** Click this button to update the firmware of the selected print server.
- **Show Web Setup:** Click this button to open your web browser and launch the Configuration Utility. Alternately, you can double-click the print server in the Device List to launch the Configuration Utility.
- **Factory Reset:** Click this button to reload the factory settings of the print server.
- **Discover Device:** Click this button to search the connected print server again.
- **About:** Click this button to bring up a window containing the basic information of PS-Utility.
- **Close:** Click this button to exit PS-Utility.

3 Information Field: Display the basic information of the selected print server in the Device List.

4 Status Bar: Display the system status.

PS Wizard

Note: The PS Wizard doesn't support Windows 95. The user can refer chapter 5 "Printing in Windows 95/98/ME" to set up for printing with Windows 95.

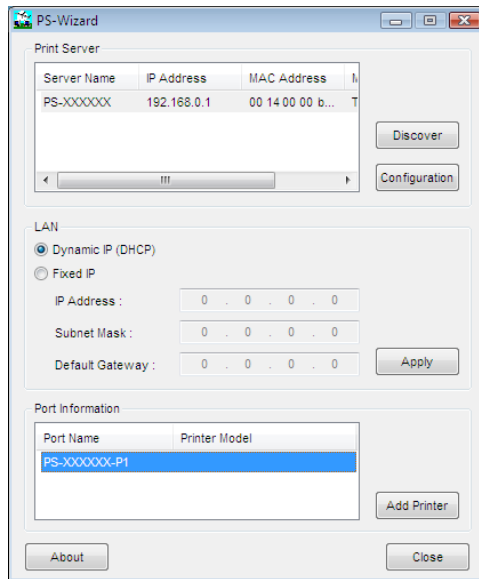
PS Wizard is a convenient utility that allows you to set up the print server's port connection.

Windows 2000/XP/2003/Vista

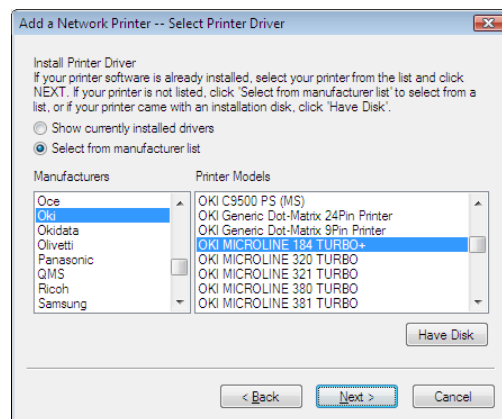
- 1) Insert the Installation CD-ROM into your computer's CD-ROM drive. Click **PS Wizard** and then click **ME/98SE** from the Auto-Run menu screen.



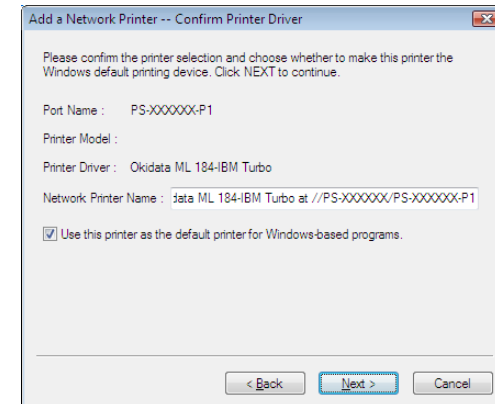
- 2) Select the print server, select the desired port and then click Add Printer.



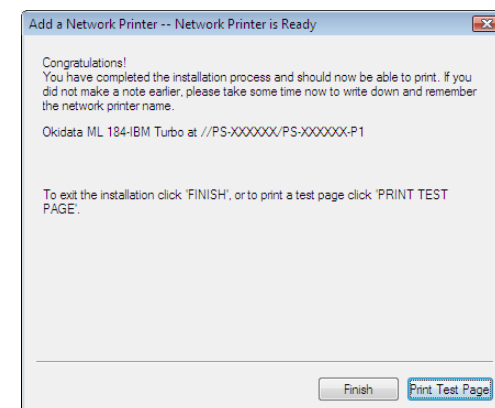
- 3) Click Select from manufacturer list. Select the appropriate driver for your printer and then click **Next**.



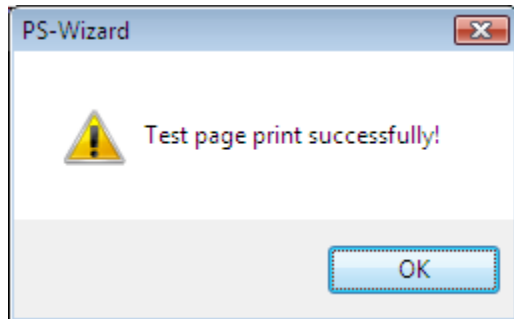
- 4) Click **Next**.



- 5) Click **Print Test Page**.



- 6) Click **OK**.



- 7) Click **Finish**.
- 8) Repeat steps 1 to 7 to add the printer to other computers on the network.

Windows 98SE/ME :

1. Insert the Installation CD-ROM into your computer's CD-ROM drive, and click **PS Wizard** from the Auto-Run menu screen. The welcome screen appears as below. Click **Next >**.



NOTE: For some specific printers, you may need to connect the printer to the computer and install the driver. In this case, connect it to the computer and install the driver first, and then connect it to the print server.

2. In the following window, select one printer in the Printer List to set up port connection, and then click **Next >**.

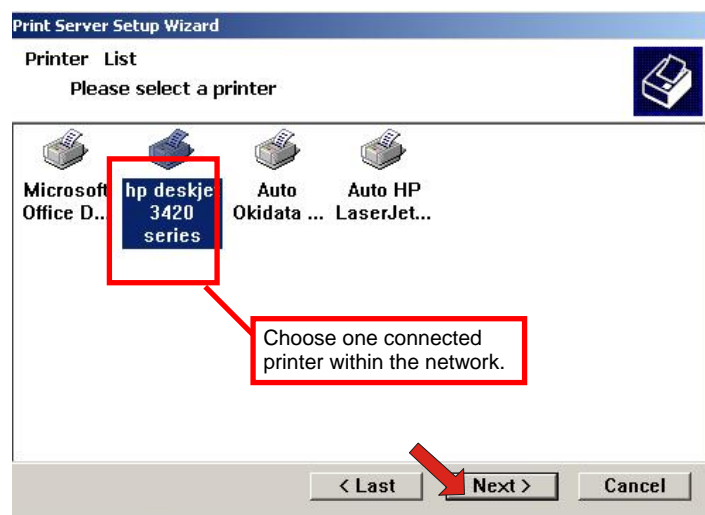
WEB CONFIGURATION

You can access and manage the Print Server through: 1) the enclosed software PS-Utility, and 2) a web browser. This chapter describes the second method – the Web Configuration Utility, and explains how to set up your print server with the web browser.

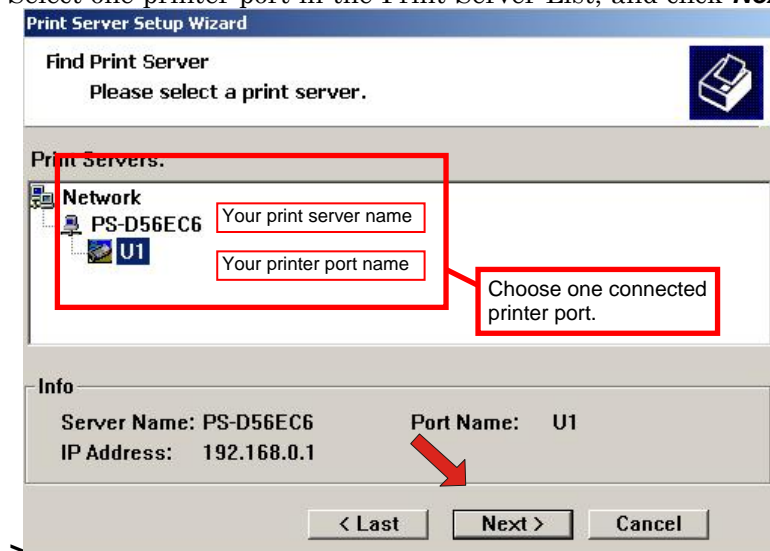
Web Configuration Utility

First, launch your web browser (such as the Internet Explorer 6.0 used in this manual). Then, type ***http://192.168.0.1*** (the default IP address) in the Address bar and press [Enter] to enter the Management screen of the Configuration Utility.

TIP: The computer's IP address must correspond with the print server's IP address in the same segment for the two devices to communicate. Extensive knowledge of LAN will be helpful in configuring the print server.



3. Select one printer port in the Print Server List, and click **Next**



Home

TRENDnet 10/100Mbps USB 2.0 Print Server TE100-P1U

Home
Setup Wizard
Change IP Address
Printer Information
Factory Reset
Firmware Upgrade
About

Home - System Information

Server Name:	PS-8B4018
Port Name:	U1
Model:	TE100-P1U
Firmware Version:	4.08 (2006-03-16)
MAC Address:	00 14 D1 8B 40 18
IP Address:	192.168.0.1 (Manual)
Up Time:	0 days, 00:02:49

Refresh

Copyright © 2006 TRENDnet. All Rights Reserved.

The Management Screen of the Configuration Utility

The Home screen displays the basic information of the print server. As shown above, the **System** displays the status of your print server and network. Clicking **Refresh** will update the information.

Setup Wizard

TRENDnet 10/100Mbps USB 2.0 Print Server TE100-P1U

Home
Setup Wizard
Change IP Address
Printer Information
Factory Reset
Firmware Upgrade
About

Setup Wizard - System

Server Name:	<input type="text" value="PS-8B4018"/>
Port Name:	<input type="text" value="U1"/>
Password:	<input type="text"/>

Next

Copyright © 2006 TRENDnet. All Rights Reserved.

The “Setup Wizard” will lead you to change all the configurations step by step. Please follow below steps to finish it

System

Server Name: Assign a name to the print server.

Port Name: Assign the Port Name for the print server

Password: Enter the Administrator password (1-8 characters).

NOTE: Passwords are limited to 8 alphanumeric characters, having more than 8 characters will invalidate the password protection. After setting up the password, the login screen will prompt you for the password the next time you login. The User Name is “**admin**” and the password is what you have assigned.

Setup Wizard - System	
Server Name:	<input type="text" value="PS-8B4018"/>
Port Name:	<input type="text" value="U1"/>
Password:	<input type="text"/>
<input type="button" value="Next"/>	

IP Address

This option allows you to set the IP address manually or automatically. When you choose ***Manually Assign***, you should enter the related information in the following boxes, including ***IP Address***, ***Subnet Mask***, and ***Default Gateway***.

Setup Wizard - IP Address	
IP Address:	<input checked="" type="radio"/> Manually Assign
	IP Address : <input type="text" value="192.168.0.1"/>
	Subnet Mask : <input type="text" value="255.255.255.0"/>
	Default Gateway : <input type="text" value="0.0.0.0"/>
	<input type="radio"/> Automatically Assign
<input type="button" value="Next"/>	

Microsoft Network

Enter the name of the Workgroup that you want the print server associated with in this field.

Setup Wizard - Microsoft Network	
Workgroup:	<input type="text" value="WORKGROUP"/>
<input type="button" value="Next"/>	

Second HTTP Port

This field allows settings to open a second port for the remote printing and IPP printing function. This will permit users to execute printing jobs through broadband IP router.

Setup Wizard - Second HTTP Port	
Second HTTP Port:	<input checked="" type="radio"/> Enable <input type="radio"/> Disable Port Number : <input type="text" value="81"/> (For Remote Web Configuration and IPP Printing)
<input type="button" value="Next"/>	

Save to Print Server

Please verify the configurations and click “Yes” to save settings.

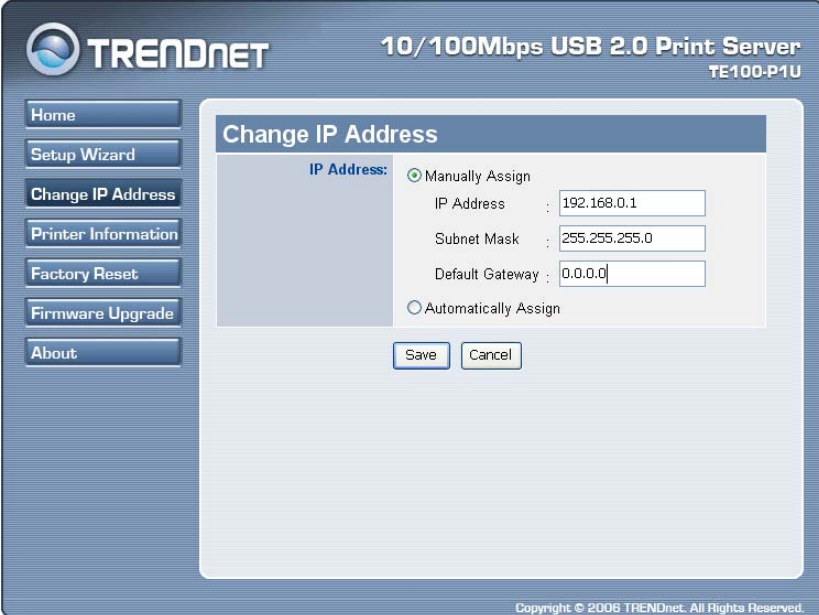
Setup Wizard - Save to Print Server

Server Name:	PS-8B4018
Port Name:	U1
IP Address:	192.168.0.1
Subnet Mask:	255.255.255.0
Default Gateway:	0.0.0.0
Workgroup:	WORKGROUP
Second HTTP Port:	Enable (Port - 81)
Password:	

Do you want to save settings to Print Server ?

The Setup Wizard is now completed.

Change IP Address



TRENDnet 10/100Mbps USB 2.0 Print Server TE100-P1U

Home
Setup Wizard
Change IP Address
Printer Information
Factory Reset
Firmware Upgrade
About

Change IP Address

IP Address: ☒ Manually Assign
IP Address : 192.168.0.1
Subnet Mask : 255.255.255.0
Default Gateway : 0.0.0.0
☐ Automatically Assign

Copyright © 2006 TRENDnet. All Rights Reserved.

This feature is helping you to change IP address only. If you have run the Setup Wizard already, you may skip this procedure. Please type in IP address that applies to your existing network (i.e. 192.168.X.X) Type in the Default Gateway (i.e. your router's local IP address).

Printer Information

The screenshot shows the web interface of a TRENDnet 10/100Mbps USB 2.0 Print Server (TE100-P1U). The left sidebar contains navigation buttons: Home, Setup Wizard, Change IP Address, Printer Information (selected), Factory Reset, Firmware Upgrade, and About. The main content area is titled "Printer Information" and displays the following details:

Printer Manufacturer:	hp
Printer Model:	deskjet 3420
Printer Command Set:	LDL, DYN
Printer Status:	on line

Below the table is a "Refresh" button. The footer of the interface reads "Copyright © 2006 TRENDnet. All Rights Reserved."

“**Printer Information**” will display all printer information such as Manufacturer, Model Number, Command Set and Status.

Factory Reset

The screenshot shows the web interface of a TRENDnet 10/100Mbps USB 2.0 Print Server (TE100-P1U) with the Factory Reset page selected. The left sidebar contains navigation buttons: Home, Setup Wizard, Change IP Address, Printer Information, Factory Reset (selected), Firmware Upgrade, and About. The main content area is titled "Factory Reset" and displays the following message:

Do you want to restore Print Server to factory default setting?

Below the message is a "Yes" button. The footer of the interface reads "Copyright © 2006 TRENDnet. All Rights Reserved."

Please click **Yes** to reload the factory settings of the print server.

Firmware Upgrade



The firmware can be easily upgrade through “Firmware Upgrade” feature. Click ***Browse*** to get the firmware file, and then click ***Upgrade*** to flash firmware. The new firmware can be downloading from www.trendnet.com once it is available.

About



This screen displays the information of the print server.

PRINTING IN WINDOWS 95/98/ME

The Print Server can provide print services to TCP/IP networks using the lpr/lpd network printing protocol. Most UNIX systems are capable of supporting lpd, as is Windows NT/2000.

This LPR for TCP/IP Printing client gives Windows 95/98/Me workstations the ability to print using the lpr/lpd printing protocol. Though it is possible to print to Print Servers from Windows 95/98/Me, this capability is useful if primarily administer your network from UNIX systems, or if you want to print from workstations that are only accessible through IP routing.

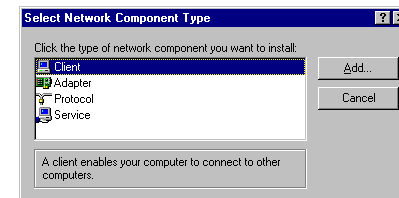
Installing the LPR for TCP/IP Printing Client

Before your Windows 95/98/Me workstation can print using the lpr protocol, you will need to install the client program, as follows:

1. Make sure that you have installed the TCP/IP protocol, and have properly configured the Windows 95/98/Me TCP/IP settings. You can install the protocol from the Network control panel if necessary.
2. From the **Start** menu, choose the **Settings** submenu, then the **Control Panel** item within it. Windows will display the Control Panel folder.
3. Double-click on the Network icon in the Control Panel folder.

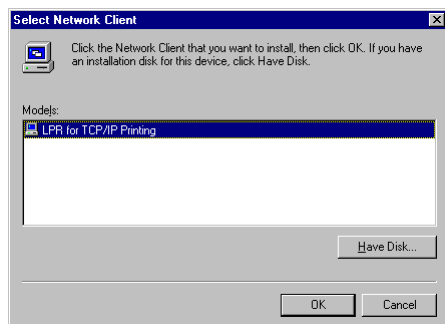


4. Click on the **Add...** button on the **Configuration** tab.
5. Windows will ask for the type of component to add. Select **Client** and click **Add...** to continue.

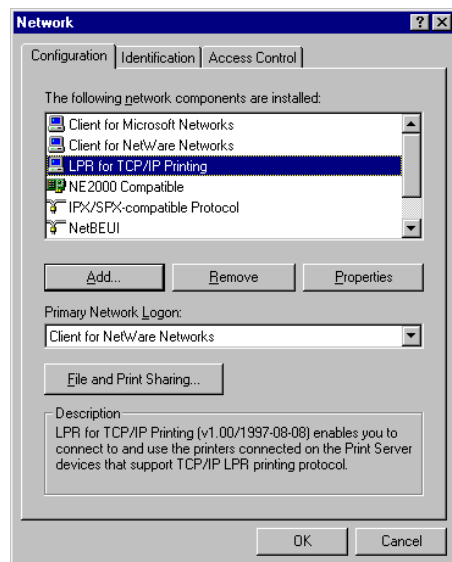


6. When Windows asks you to select a network client, click the **Have Disk...** button.

7. Insert the Print Server installation CD in your computer's CD-ROM, enter the proper pathname (for example , D:\ lpr), and click **OK**.
8. Select the LPR for TCP/IP Printing client and click **OK**.



9. Windows will copy the necessary files, and return to the Network dialog. Click **OK** to let Windows restart.



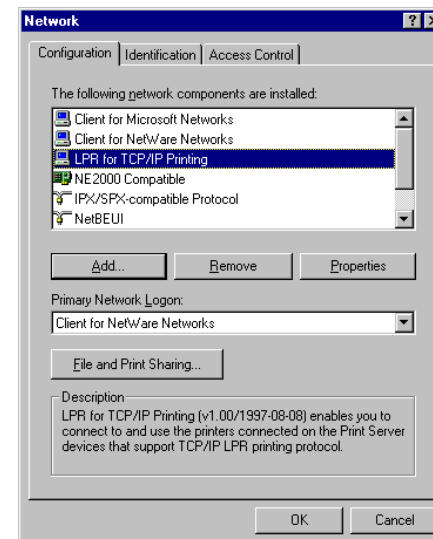
Adding LPR Printer Ports

Once you have installed the client, and have enabled TCP/IP printing for the Print Servers, then you need to add a printer port for each printer you will be printing to using the lpr/lpd protocol. To add a printer port,

1. From the **Start** menu, choose the **Settings** submenu, then the **Control Panel** item within it. Windows will display the Control Panel folder.
2. Double-click on the **Network** icon in the Control Panel folder.

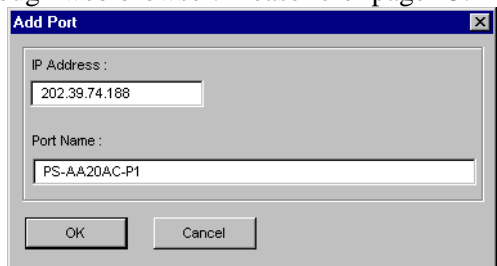


3. Choose the LPR for TCP/IP Printing client and click the **Properties** button.

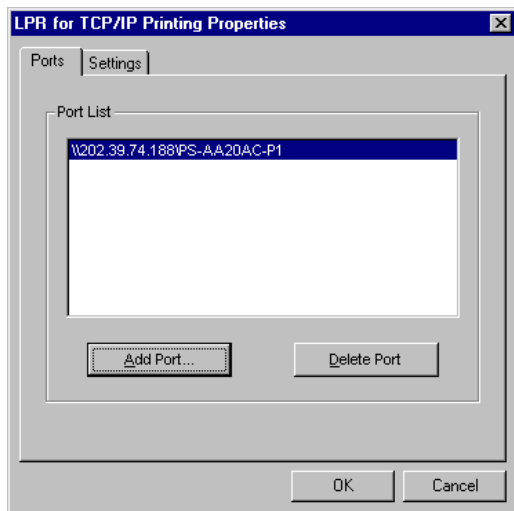


4. Click the **Add Port...** button to add a new lpd-accessible printer port.
5. Enter the IP address of the Print Server and the name of the printer port that you will be printing to, then press OK.

Hint: You can get the Port name from the print server's system information through web browser. Please refer page 25.



6. Click **OK** to leave the LPR for TCP/IP Printing Properties window.



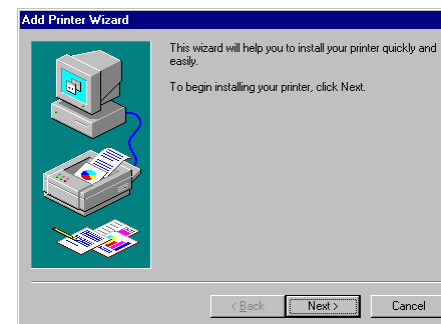
Printing from Windows 95/98/Me

After you have added the necessary printer ports, you can add a printer device for printing to the port. To enable printing to an lpd-accessible printer port from Windows 95/98/Me,

1. From the Start menu, choose the Settings submenu, then the Printers item within it. Windows will display the Printers folder.
2. Double-click on the Add Printer icon in the Printers folder.

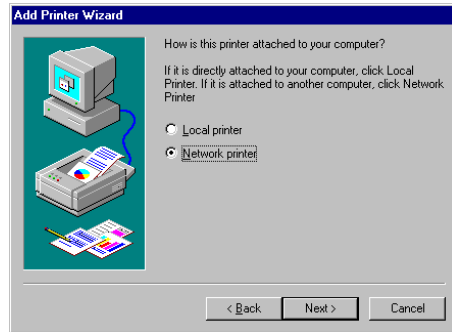


Windows will start the Add Printer Wizard.

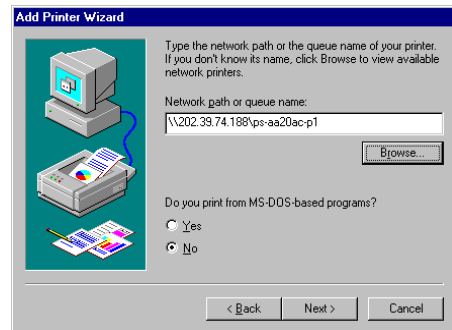


Click the **Next >** button to continue to the next screen.

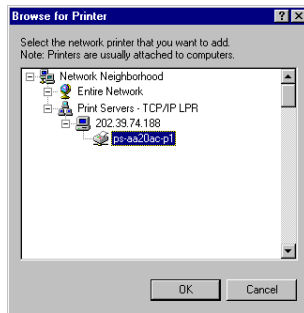
3. Choose the **Network Printer** selection and click the **Next >** button to continue.



4. Enter the name of the port, as displayed in the LPR for TCP/IP Printing Port List.



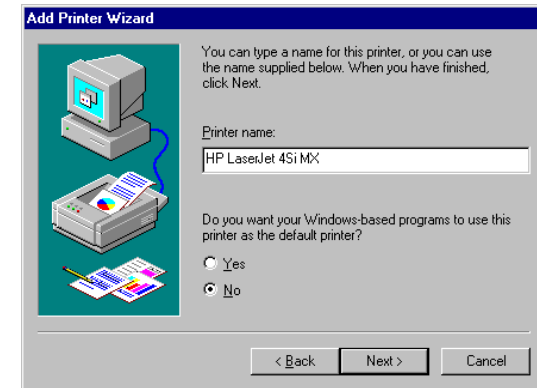
Alternatively, you can click **Browse...** and locate the printer port. TCP/IP printing ports are located under the Entire Network icon, within the Print Servers - TCP/IP LPR icon.



Press **OK** when you have located the proper printer port.

Click **Next >** to continue to the next step.

5. At this point Windows will ask you to choose the correct printer driver for the printer. Choose your printer's make and model from the list, or use the driver disk included with the printer. When you have chosen the correct printer, click **Next >** to continue.
6. Windows will then ask for a name for the new printer, and ask whether or not you want to set the printer as the Windows default printer. Click **Finish** (or **Next >**) to continue.



7. Windows may ask you whether or not you wish to print a test page to make sure that the printer will work correctly. When the test page is done printing, you will be asked whether or not the test page printed.

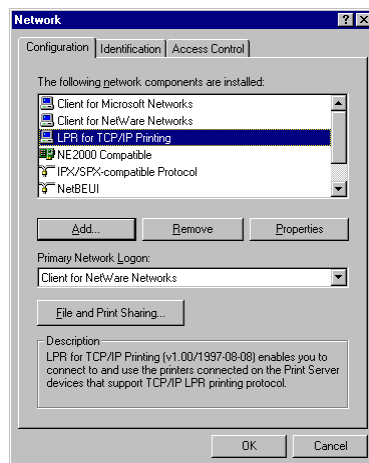
Setting TCP/IP Printing Settings

The lpr client's Properties dialog allows you to change several of the client's settings. To change these settings,

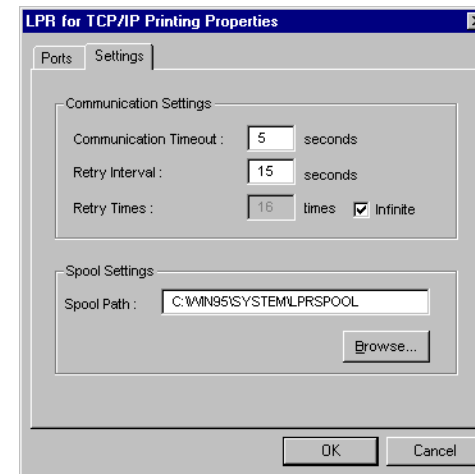
1. From the **Start** menu, choose the **Settings** submenu, then the **Control Panel** item within it. Windows will display the Control Panel folder.
2. Double-click on the **Network** icon in the Control Panel folder.



3. Choose the LPR for TCP/IP Printing client and click the **Properties** button.



4. Click on the **Settings** tab to access the lpr client settings. Change the settings as necessary, and press **OK** to let the changes take effect.



The parameters are as follows:

- ♦ **Communication Timeout** Determines how long, in seconds, the system will wait before determining that it has lost connection with lpr/lpd print servers.
- ♦ **Retry Interval** Determines how long, in seconds, the system will wait before retrying a lost connection.
- ♦ **Retry Times** Determines how many times the system will retry a lost connection with an lpr/lpd print server. If **Infinite** is checked, it will retry indefinitely.
- ♦ **Spool Path** Gives the directory path where the system will temporarily store lpr/lpd print server job files.

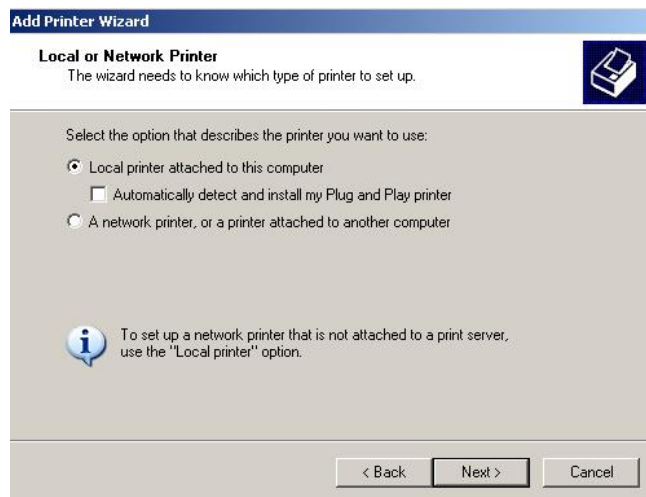
6

PRINTING IN WINDOWS 2000/XP/VISTA

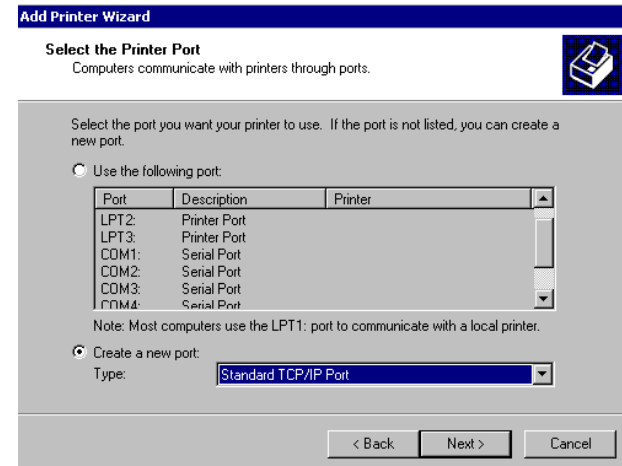
Setting Up Windows 2000 TCP/IP Printing

Following is the correct procedure for setting up TCP/IP LPR printing under Windows 2000.

Click **Start > Settings > Printers**. Double Click “Add Printer”
Select “Local Printer”



Create a new “Standard TCP/IP Port”



Click “Next”



Input the IP Address of the Print Server, and the Port name of the Port that will be printed to, then click “Next”.

Hint: You can get the Port name from the print server’s system information through web browser. Please refer page 25.

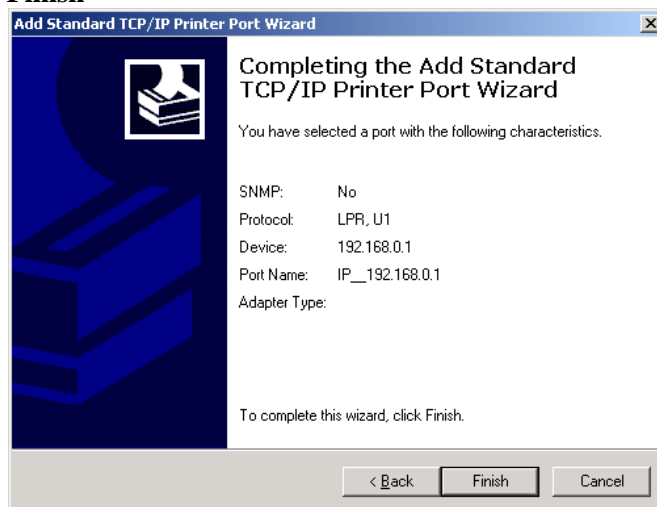
Select “Custom”, and click “Settings”.

Select “LPR”, and put the Port name in the field labeled “Queue Name”. Then Click “OK”.

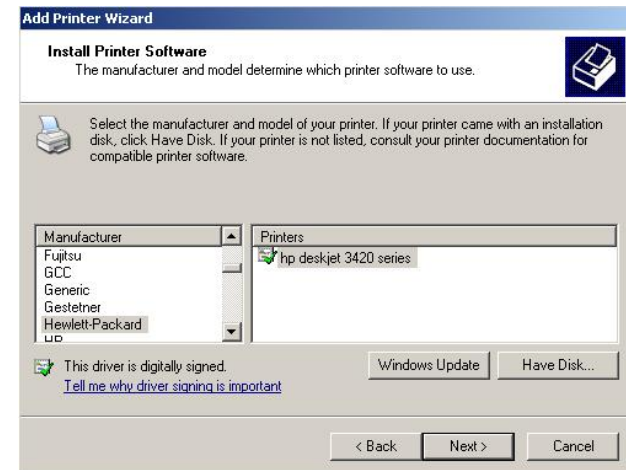
Click **“Next”**.



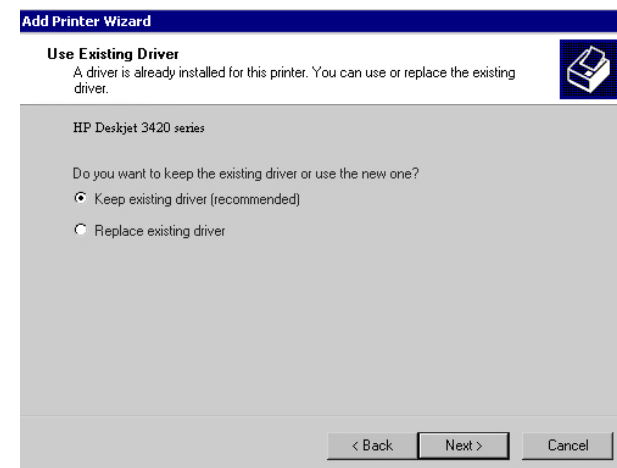
Click **“Finish”**



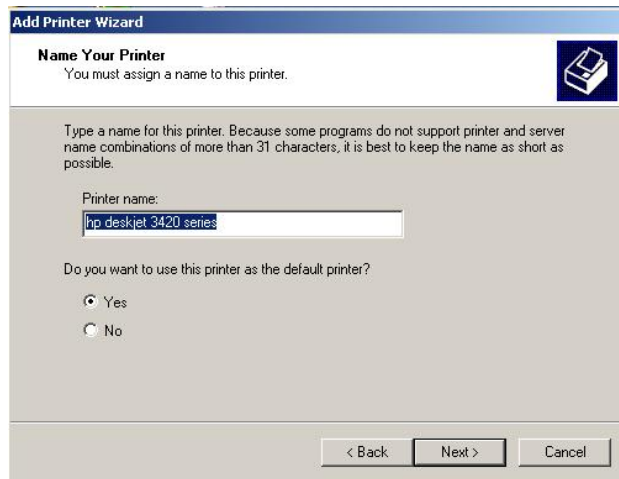
The Printer Install Wizard will now prompt for drivers. Select the correct Make and Model, or click **“Have Disk”**, to provide the Manufacturer’s Driver Disk.



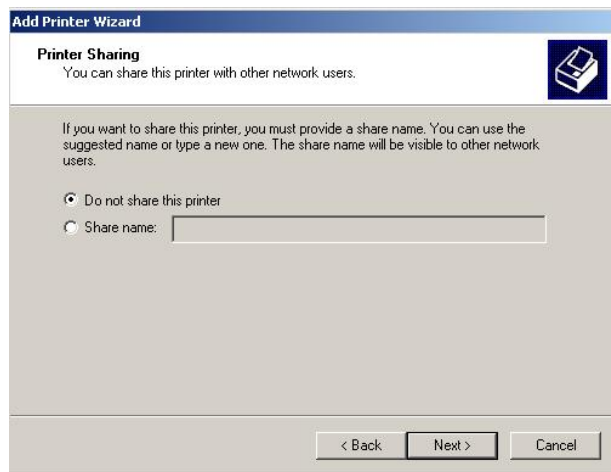
Click **“Next”**.



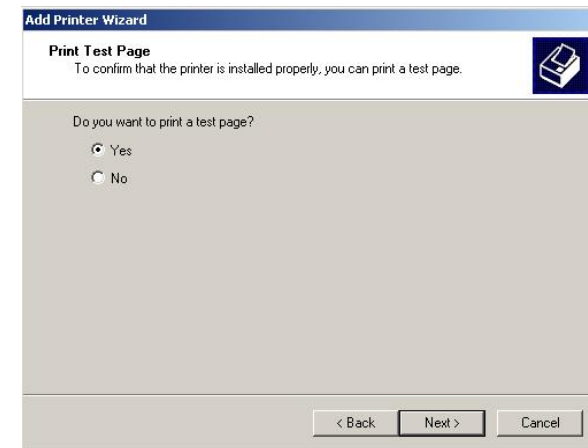
Select a “**Printer Name**”.



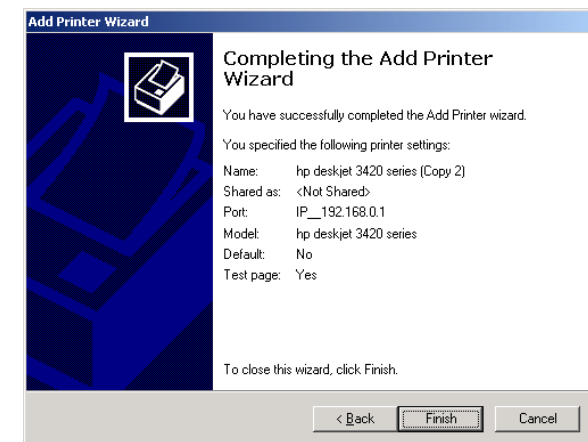
Sharing can be enabled here.



Also, a Test Page can be printed to confirm proper configuration.



When the Test Page has been printed, click “**Finish**” to complete the installation.



Setting Up Windows XP TCP/IP Printing

Following is the correct procedure for setting up TCP/IP LPR printing under Windows XP.

Click Start > **Printer and Faxes**

Double Click “**Add a Printer**”

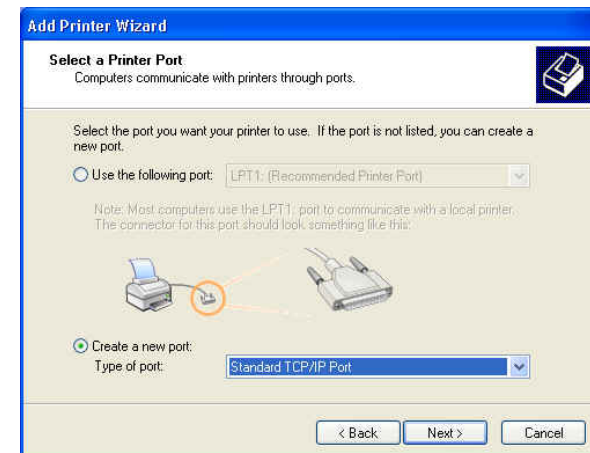
Click “**Next**”



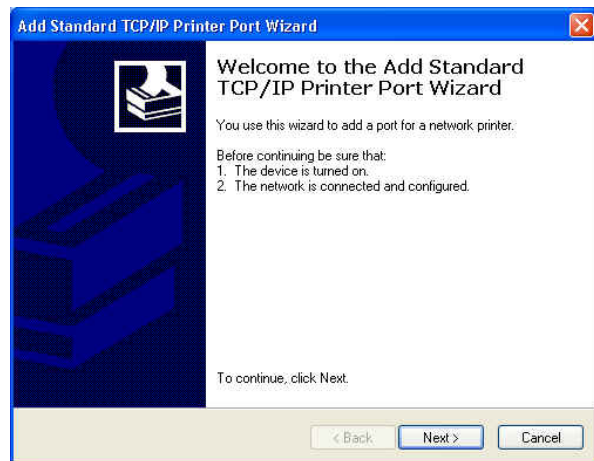
Select “**Local Printer**”



Create a new “**Standard TCP/IP Port**”

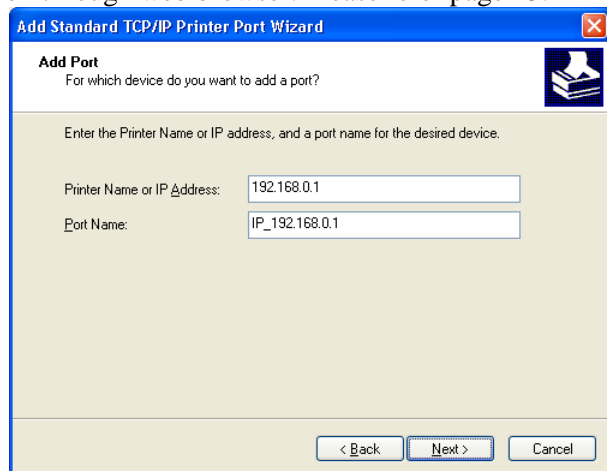


Click “Next”

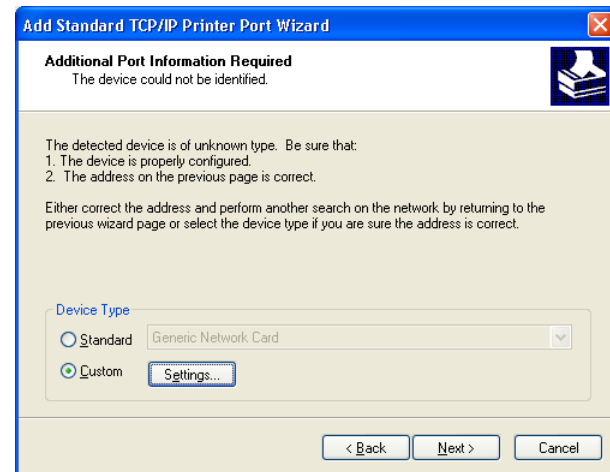


Input the IP Address of the Print Server, and the Port name of the Port that will be printed to, then click “Next”.

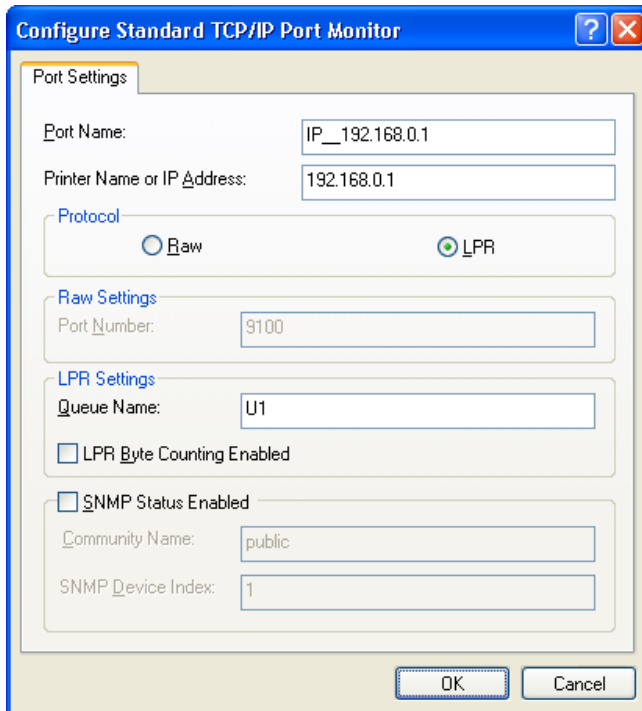
Hint: You can get the Port name from the print server’s system information through web browser. Please refer page 25.



1Select “Custom”, and click “Settings”.



Select “LPR”, and put the Port name in the field labeled “Queue Name”. Then Click “OK”.



Configure Standard TCP/IP Port Monitor

Port Settings

Port Name: IP__192.168.0.1

Printer Name or IP Address: 192.168.0.1

Protocol

☐ Raw ☒ LPR

Raw Settings

Port Number: 9100

LPR Settings

Queue Name: U1

☐ LPR Byte Counting Enabled

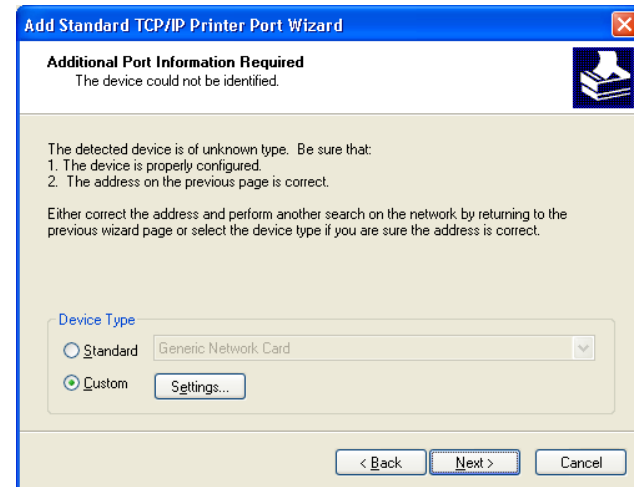
☐ SNMP Status Enabled

Community Name: public

SNMP Device Index: 1

OK Cancel

Click “Next”.



Add Standard TCP/IP Printer Port Wizard

Additional Port Information Required
The device could not be identified.

The detected device is of unknown type. Be sure that:

1. The device is properly configured.
2. The address on the previous page is correct.

Either correct the address and perform another search on the network by returning to the previous wizard page or select the device type if you are sure the address is correct.

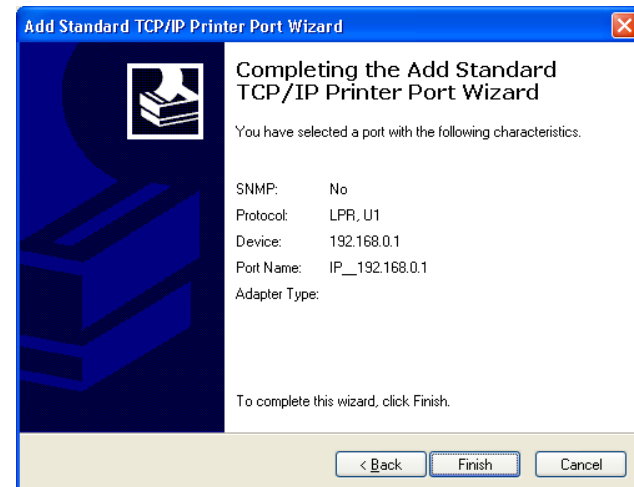
Device Type

☐ Standard Generic Network Card

☒ Custom Settings...

< Back Next > Cancel

Click “Finish”



Add Standard TCP/IP Printer Port Wizard

Completing the Add Standard TCP/IP Printer Port Wizard

You have selected a port with the following characteristics.

SNMP: No

Protocol: LPR, U1

Device: 192.168.0.1

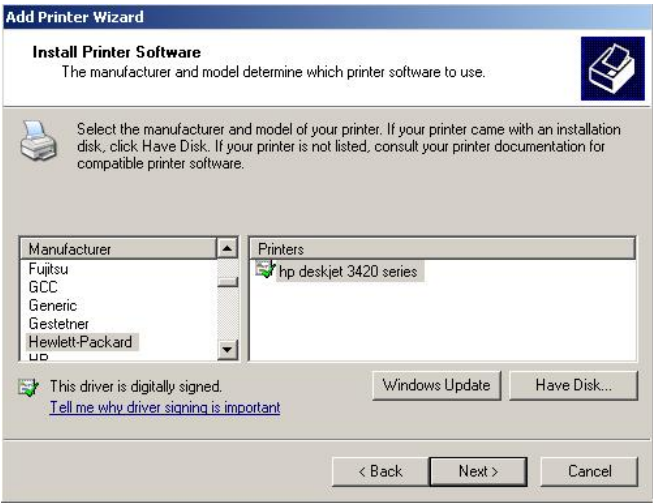
Port Name: IP__192.168.0.1

Adapter Type:

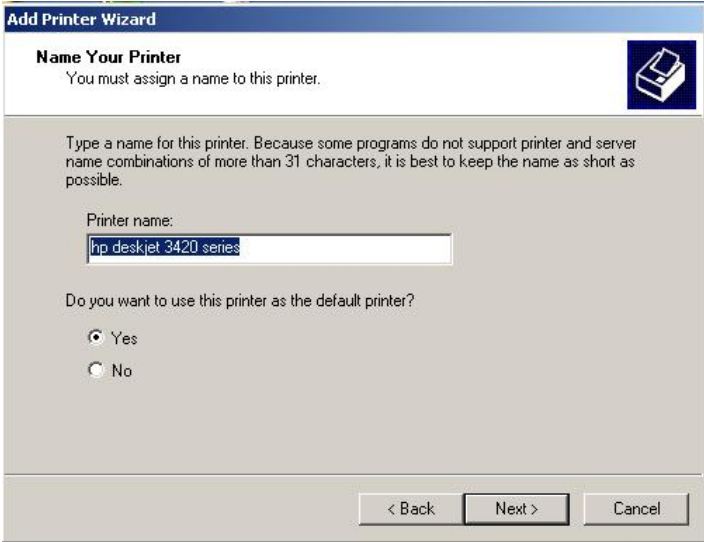
To complete this wizard, click Finish.

< Back Finish Cancel

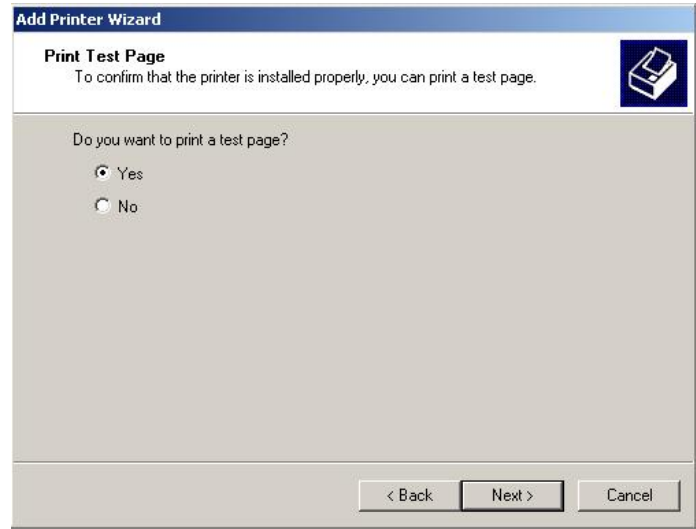
The Printer Install Wizard will now prompt for drivers. Select the correct Make and Model, or click **“Have Disk”**, to provide the Manufacturer’s Driver Disk. Click **“Next”**.



Select a **“Printer Name”**.



A Test Page can be printed to confirm proper configuration.



When the test page has been printed, click “**Finish**” to complete the installation.



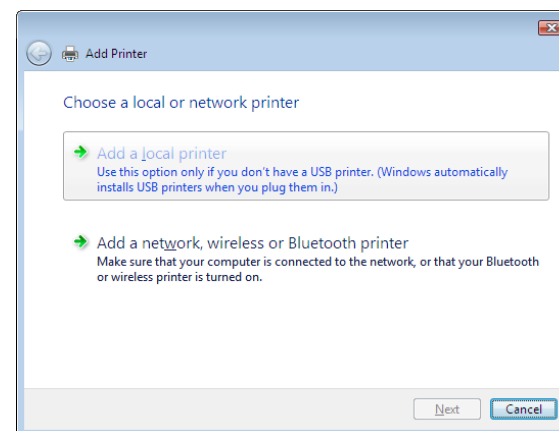
Setting Up Windows Vista TCP/IP Printing

Following is the correct procedure for setting up TCP/IP LPR printing under Windows Vista.

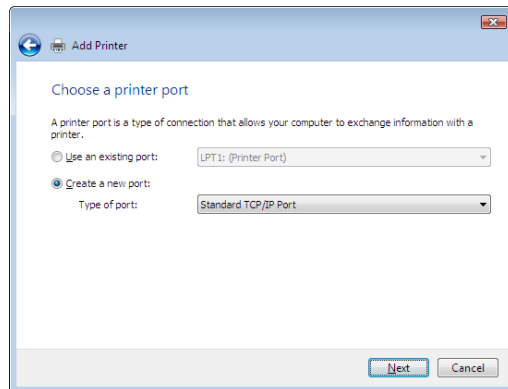
Click Start > Control Panel > **Printers**

Click “**Add a Printer**”

Click “**Add a local printer**”

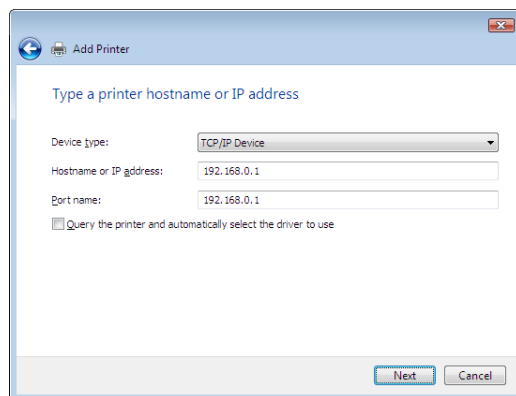


Select **Create a new port**, select **Standard TCP/IP Port** and then click **Next**.

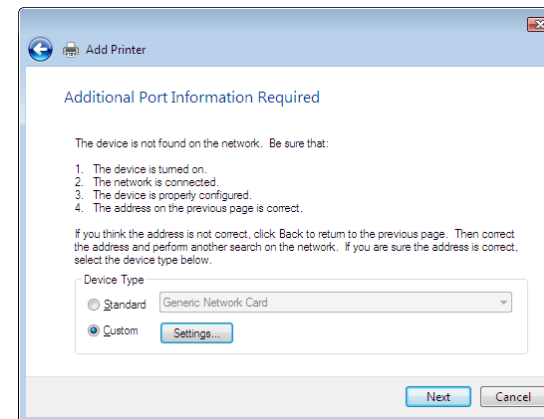


Input the IP Address of the Print Server, and the Port name of the Port that will be printed to, then click **Next**.

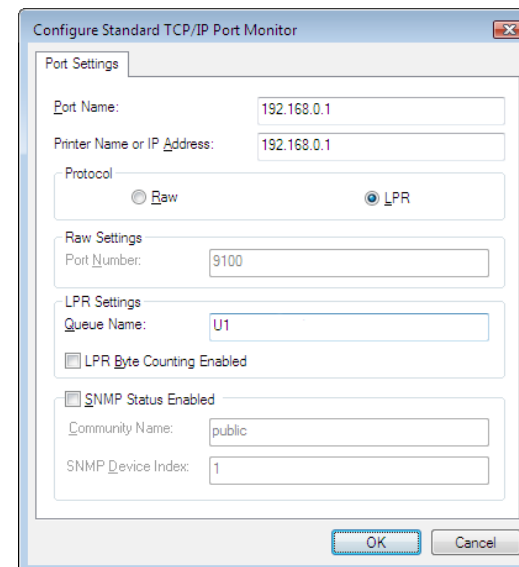
Hint: You can get the Port name from the print server's system information through web browser. Please refer page 25-26.



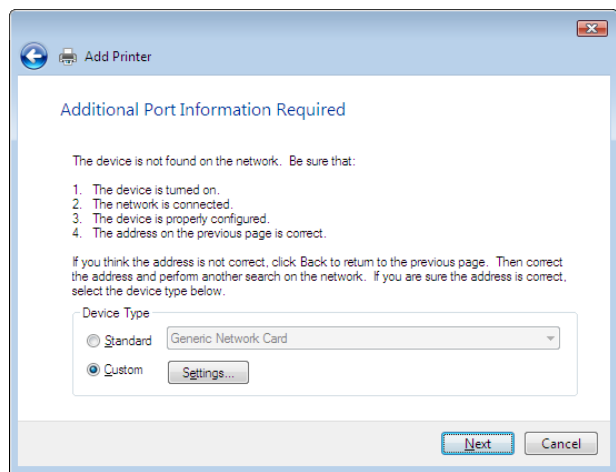
Select **Custom**, and click **Settings**.



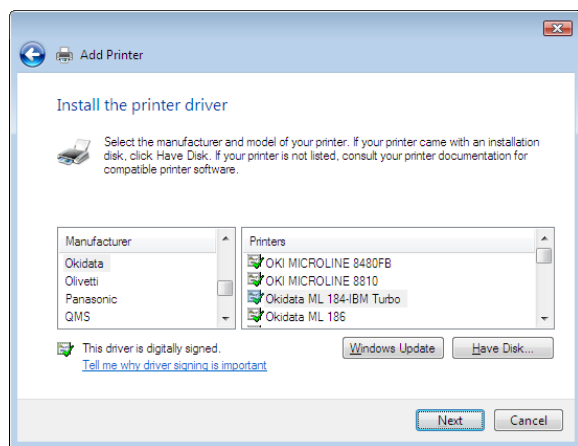
Select **LPR**, and put the Port name in the field labeled **Queue Name**. Then Click **OK**.



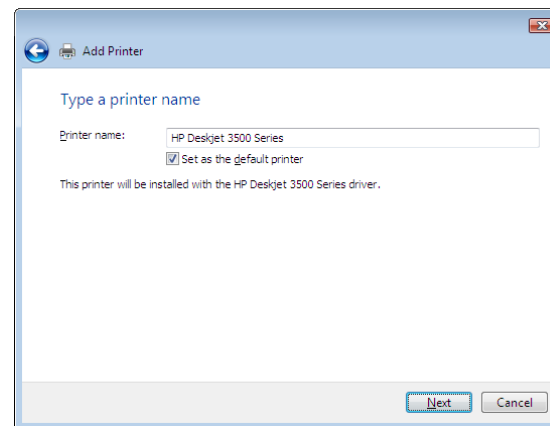
Click “Next”.



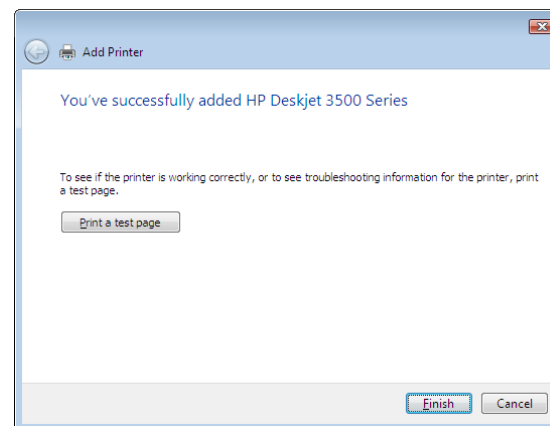
The Printer Install Wizard will now prompt for drivers. Select the correct Make and Model, or click “Have Disk”, to provide the Manufacturer’s Driver Disk. Click “Next”.



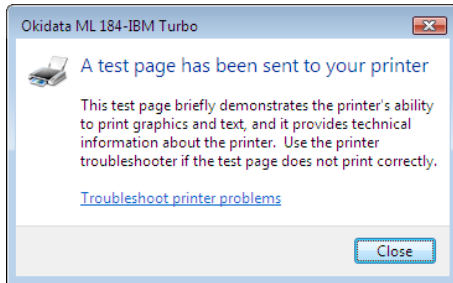
Select a “Printer Name”.



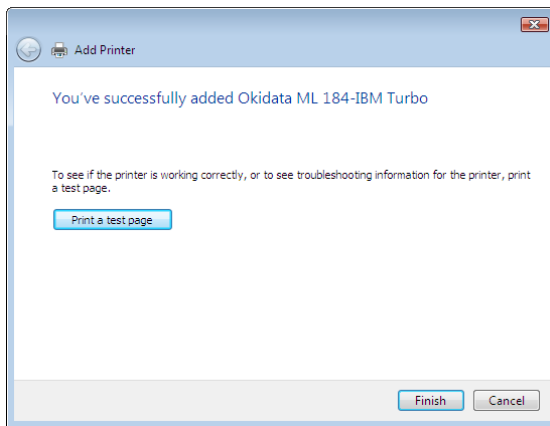
A Test Page can be printed to confirm proper configuration.



Once a test page has been sent to your printer, click **Close**.



Click **Finish**.



PRINTING IN MAC OS

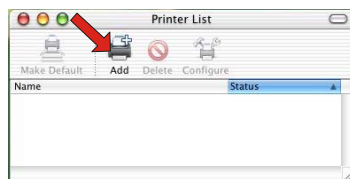
Rendezvous Uses in MAC OS 10.2

The latest version of MAC OS provides a new feature that is called **Rendezvous**. Rendezvous is a revolutionary networking technology standard that lets you create an instant network of computers and devices, which can be used throughout Mac OS 10.2 to provide innovative ways to share files and printers and even contact other people on the network.

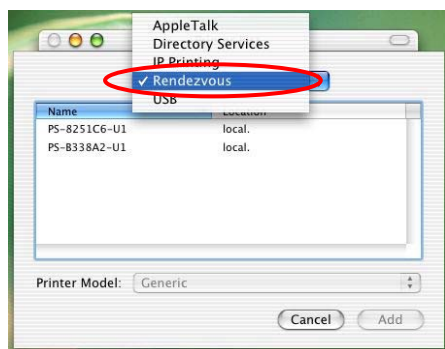
For the printer connection, the Mac OS 10.2 Print Center application uses Rendezvous to discover Rendezvous-enabled printers on the network. When you add your computer to a network, Print Center automatically discovers the available printers. All you have to do is selecting the one you want to use and then start printing. You can add a new printer to the network and all the users on the network will see the new printer automatically appear in their Print Center, without any configuration.

The following instructions provide a common procedure of installing the printer:

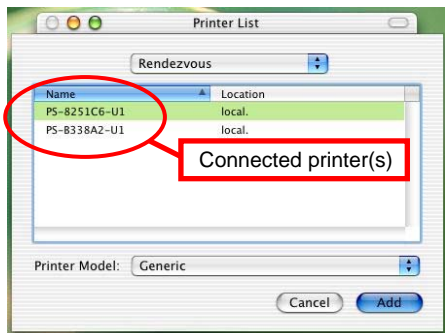
1. Launch Print Center. Press and hold the Option key, click the **Add** button.



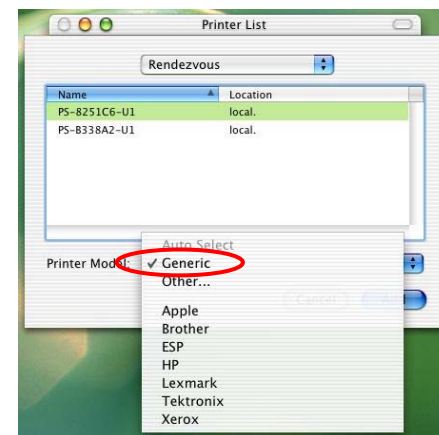
2. Select **Rendezvous** from the pop-up menu.



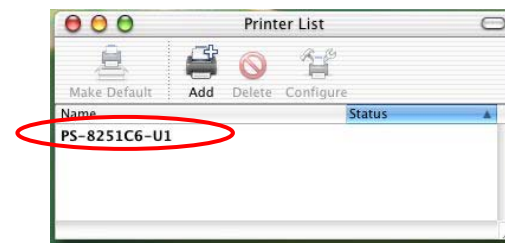
3. When clicking the **Rendezvous** item, the following window appears to display the connected Rendezvous-enabled printers.



4. Select the desired printer, and the following pop-up menu displays the printer's manufacturer. Select **Generic**.



5. The printer is installed into the system successfully.



Limited Warranty

TRENDnet warrants its products against defects in material and workmanship, under normal use and service, for the following lengths of time from the date of purchase.

TE100-P1U – 5 Years Warranty

If a product does not operate as warranted above during the applicable warranty period, TRENDnet shall, at its option and expense, repair the defective product or part, deliver to customer an equivalent product or part to replace the defective item, or refund to customer the purchase price paid for the defective product. All products that are replaced will become the property of TRENDnet. Replacement products may be new or reconditioned.

TRENDnet shall not be responsible for any software, firmware, information, or memory data of customer contained in, stored on, or integrated with any products returned to TRENDnet pursuant to any warranty.

There are no user serviceable parts inside the product. Do not remove or attempt to service the product by any unauthorized service center. This warranty is voided if (i) the product has been modified or repaired by any unauthorized service center, (ii) the product was subject to accident, abuse, or improper use (iii) the product was subject to conditions more severe than those specified in the manual.

Warranty service may be obtained by contacting TRENDnet office within the applicable warranty period for a Return Material Authorization (RMA) number, accompanied by a copy of the dated proof of the purchase. Products returned to TRENDnet must be pre-authorized by TRENDnet with RMA number marked on the outside of the package, and sent prepaid, insured and packaged appropriately for safe shipment.

WARRANTIES EXCLUSIVE: IF THE TRENDNET PRODUCT DOES NOT OPERATE AS WARRANTED ABOVE, THE CUSTOMER'S SOLE REMEDY SHALL BE, AT TRENDNET'S OPTION, REPAIR OR REPLACEMENT. THE FOREGOING WARRANTIES AND REMEDIES ARE EXCLUSIVE AND ARE IN LIEU OF ALL OTHER WARRANTIES, EXPRESSED OR IMPLIED, EITHER IN FACT OR BY OPERATION OF LAW, STATUTORY OR OTHERWISE, INCLUDING WARRANTIES OF MERCHANTABILITY AND FITNESS FOR A PARTICULAR PURPOSE. TRENDNET NEITHER ASSUMES NOR AUTHORIZES ANY OTHER PERSON TO ASSUME FOR IT ANY OTHER LIABILITY IN CONNECTION WITH THE SALE, INSTALLATION MAINTENANCE OR USE OF TRENDNET'S PRODUCTS.

TRENDNET SHALL NOT BE LIABLE UNDER THIS WARRANTY IF ITS TESTING AND EXAMINATION DISCLOSE THAT THE ALLEGED DEFECT IN THE PRODUCT DOES NOT EXIST OR WAS CAUSED BY CUSTOMER'S OR ANY THIRD PERSON'S MISUSE, NEGLECT, IMPROPER INSTALLATION OR TESTING, UNAUTHORIZED ATTEMPTS TO REPAIR OR MODIFY, OR ANY OTHER CAUSE BEYOND THE RANGE OF THE INTENDED USE, OR BY ACCIDENT, FIRE, LIGHTNING, OR OTHER HAZARD.

LIMITATION OF LIABILITY: TO THE FULL EXTENT ALLOWED BY LAW TRENDNET ALSO EXCLUDES FOR ITSELF AND ITS SUPPLIERS ANY LIABILITY, WHETHER BASED IN CONTRACT OR TORT (INCLUDING NEGLIGENCE), FOR INCIDENTAL, CONSEQUENTIAL, INDIRECT, SPECIAL, OR PUNITIVE DAMAGES OF ANY KIND, OR FOR LOSS OF REVENUE OR PROFITS, LOSS OF BUSINESS, LOSS OF INFORMATION OR DATE, OR OTHER FINANCIAL LOSS ARISING OUT OF OR IN CONNECTION WITH THE SALE, INSTALLATION, MAINTENANCE, USE, PERFORMANCE, FAILURE, OR INTERRUPTION OF THE POSSIBILITY OF SUCH DAMAGES, AND LIMITS ITS LIABILITY TO REPAIR, REPLACEMENT, OR REFUND OF THE PURCHASE PRICE PAID, AT TRENDNET'S OPTION. THIS DISCLAIMER OF LIABILITY FOR DAMAGES WILL NOT BE AFFECTED IF ANY REMEDY PROVIDED HEREIN SHALL FAIL OF ITS ESSENTIAL PURPOSE.

Governing Law: This Limited Warranty shall be governed by the laws of the state of California.

AC/DC Power Adapter, Cooling Fan, Cable and Power Supply carry - 1 Year Warranty



TRENDnet Technical Support

US • Canada

Toll Free Telephone: 1(866) 845-3673

24/7 Tech Support



Europe (Germany • France • Italy • Spain • Switzerland • UK)

Toll Free Telephone: +00800 60 76 76 67

English/Espanol - 24/7

Francais/Deutsch - 11am-8pm, Monday - Friday MET

Worldwide

Telephone: +(31) (0) 20 504 05 35

English/Espanol - 24/7

Francais/Deutsch - 11am-8pm, Monday - Friday MET

Product Warranty Registration

Please take a moment to register your product online.

Go to TRENDnet's website at <http://www.trendnet.com/register>

TRENDnet

20675 Manhattan Place
Torrance, CA 90501
USA