





Quick Installation Guide  

**TE100-PIP**  
3.01

<b>English</b>	<b>1</b>
1. Before You Start	1
2. How to Install	2
3. Configure the Print Server	3
4. Add the Printer to your PC	5
<b>Troubleshooting</b>	<b>7</b>



## Package Contents

- TE100-P1P
- Utility CD-ROM
- Multi-Language Quick Installation Guide
- AC Power Adapter (5V DC, 2.5A)

## System Requirements

- CD-ROM Drive
- Wired or Wireless Router
- An available DHCP server – routers usually have a built-in DHCP server

Supported Operating Systems	CPU	Memory
Windows 7 (32/64-bit)	1GHz or above	1GB RAM or above
Windows Vista (32/64-bit)	800MHz or above	512MB RAM or above
Windows 2003 Server / XP (32/64-bit) / 2000 / ME / 98SE	300MHz or above	256MB RAM or above
Mac OS X (10.6)	Intel Processor	1GB RAM or above
Mac OS X (10.5)	867MHz or above	512MB RAM or above
Mac OS X (10.4)	333MHz or above	256MB RAM or above
Mac OS X (10.1-10.3)	300MHz or above	256MB RAM or above

## PS Utility/PS Wizard Requirements

- Windows 7 (32/64-bit), Vista (32/64-bit), 2003 Server, XP (32/64-bit), 2000, ME, 98SE

## 2. How to Installation

**Note:** Please power off all printers before connecting them to the print server. Then turn on each printer after you make your hardware connections.

1. Connect a RJ-45 network cable from a Switch/Router to the **LAN** port on the Print Server.



2. Connect the **AC Power Adapter** to the Print Server and then to a power outlet.



3. Connect the Parallel Printer to the **Parallel** port on the Print Server.

4. Power **ON** the printer.

ENGLISH

FRANÇAIS

DEUTSCH

ESPAÑOL

РУССКИЙ

### 3. Configure the Print Server

ENGLISH

**Note:** The Print Server can be managed using the PS Utility or a web browser. For MAC users, change your computers IP address to 192.168.0.X (where X is an available number from 2-254). Since the Print Server's default IP address is 192.168.0.1, make sure no other network devices are assigned an IP address of 192.168.0.1. Then enter <http://192.168.0.1> in your web browser to access the Print Server's Web Utility.

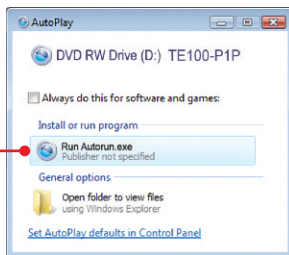
Français

#### For Windows Users

1. Insert the **Utility CD-ROM** into your computer's CD-ROM Drive.

DEUTSCH

2. Click **Run Autorun.exe** (Windows 7/Vista only).



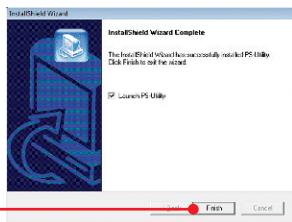
ESPAÑOL

3. Click **Install Utility** → **PS Utility**.

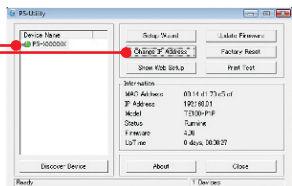


РУССКИЙ

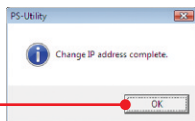
4. Follow the **InstallShield Wizard** instructions. Click **Finish**.



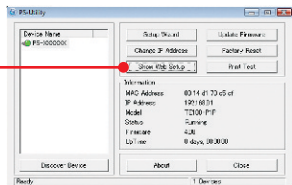
5. Select the Print Server and click **Change IP Address**. Manually assign the **IP Address** of the Print Server and then click **OK**.  
Note: The IP Address must match the network segment of your network.



6. Click **OK**.



7. Click **Show Web Setup**.



**Print Server configuration is now complete.**

## 4. Add the Printer to your PC

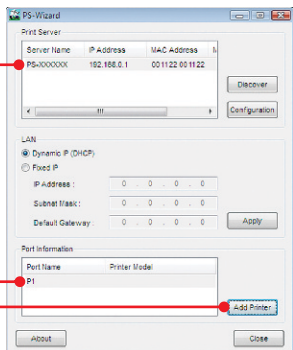
**Note:** For printing instructions for Windows ME, 98SE, and Mac OS X, please consult the User's Guide included on the Utility CD-ROM.

### Windows 7/Vista/2003 Server/XP/2000

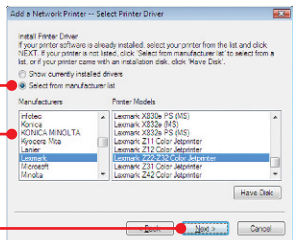
1. Click **PS Wizard** and then click **Win 7/Vista/2003/XP/2000**.



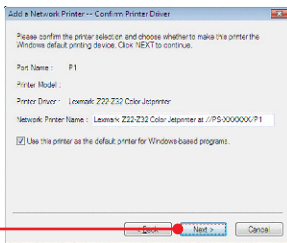
2. Select the print server, select the desired port and then click **Add Printer**.



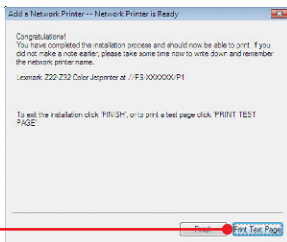
3. Click **Select from manufacturer list**. Select the appropriate driver for your printer and then click **Next**.



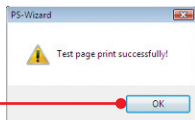
4. Click **Next**.



5. Click **Print Test Page**.



6. Click **OK**.



7. Click **Finish**.

8. Repeat steps 1 to 7 to add the printer to other computers on the network.

### Add Printer is now complete.

For detailed information regarding the **TE100-P1P** configuration and advanced settings, please refer to User's Guide on the Utility CD-ROM, or TRENDnet's website at <http://www.trendnet.com>.

### Register Your Product

To ensure the highest level of customer service and support, please take a moment to register your product Online at: [www.trendnet.com/register](http://www.trendnet.com/register)

Thank you for choosing TRENDnet



## 1. I inserted the Utility CD-ROM into my computer's CD-ROM Drive but the installation menu does not appear automatically. What should I do?

1. For Windows 7, if the installation menu does not appear automatically, click on the Windows icon on the bottom left hand corner of the screen, click the "Search programs and files" box, type D:\autorun.exe, where "D" in "D:\autorun.exe" is the letter assigned to your CD-ROM Drive, and then press the ENTER key on your keyboard
2. For Windows Vista, if the installation menu does not appear automatically, click Start, click the Start Search box, type D:\autorun.exe where "D" in "D:\autorun.exe" is the letter assigned to your CD-ROM Drive, and then press the ENTER key on your keyboard.
3. For Windows 2000/XP, if the window does not appear automatically, click Start, click Run, type D:\autorun.exe where "D" in "D:\autorun.exe" is the letter assigned to your CD-ROM Drive, and then press the ENTER key on your keyboard.

## 2. The PS Wizard / PS Utility is unable to see my printer server. What should I do?

1. Double check your hardware connections; make sure that the print server and printer are powered ON and are properly connected.
2. Click **Discover**.
3. Disable any software firewall programs (e.g. ZoneAlarm). If your computer is running Windows 7, Vista, or XP, disable the built in firewall program.

## 3. I successfully added a printer to my computer and I can print a test page, but I cannot print anything from Microsoft Word or other applications.

Make sure the printer is set as your **default** printer.

1. On Windows 7, click the Windows icon → Devices and Printers and verify that your printer icon has a check on it.
2. On Windows Vista, click the Start Icon → Control Panel → Classic View → Printers and verify that your printer icon has a check on it.
3. On Windows XP/2000/2003 Server, click Start and then click Printers & Faxes, verify that your printer icon has a check on it.

## 4. My printer does not print the entire document. What should I do?

### Windows 7

1. Click on the Windows icon on the bottom left-hand corner of the screen.
2. Click Devices and Printers.
3. Right click on the printer and select Printer Properties.
4. Click the **Advanced** tab.
5. Uncheck **Enable advanced printing features**.
6. Click **Apply**.
7. Click **OK**.

### **Windows Vista**

1. Click on the Windows icon on the bottom left-hand corner of the screen.
2. Click **Control Panel**.
3. Click **Classic View**.
4. Click **Printers**.
5. Right click on the printer and select **Properties**.
6. Click the **Advanced** tab.
7. Uncheck **Enable advanced printing features**.
8. Click **Apply**.
9. Click **OK**.

### **5. I configured my print server to automatically receive an IP Address from a DHCP server, and now I cannot go into the Print Server's web utility.**

Open PS Wizard (See 4. Add the Printer to your PC) to locate your print server's IP Address.

### **6. How do I setup the TE100-P1P on a Mac?**

Type in <http://192.168.0.1> in you browser to logon to the built-in web configuration

### **7. I forgot the administration password. How do I reset my TE100-P1P?**

Factory reset the TE100-P1P using the following procedure. This procedure will reset all settings to default. By default, there is no password.

1. Open up PS Utility.
2. Copy down the last 4 digits of the MAC address.
3. Press the Factory Reset button.
4. When prompted for a password, enter SYSXXXX, where XXXX represents the last 4 digits of the MAC address. Note: All letters must be uppercase.

If you still encounter problems or have any questions regarding the **TE100-P1P**, please contact TRENDnet's Technical Support Department.

# Declaration of Conformity



## Company Information:

Company Name:  
TRENDnet, Inc.

Company Address:  
20675 Manhattan Place  
Torrance, CA 90501  
USA

## Product Information:

Product Description:

1-Port Parallel Print Server



Model Number:  
TE100-P1P

Brand name:  
TRENDnet

## Technical Standards:

EN 55022 :1998 + A1 : 2000 + A2 : 2003  
EN 61000-3-2 : 2000  
EN 61000-3-3 :1995 + A1 : 2001  
EN 55024 : 1998 + A1 : 2001 + A2 : 2003

## Declaration:

*The product is herewith confirmed to comply with the requirements of Directive 1999/5/EC of the Council (European Parliament) on the radio and telecommunications terminal equipment and Energy-related products Directive 2009/125/EC.*

*I hereby declare that the products and devices mentioned above are consistent with the standards and provisions of the guidelines.*

Sonny Su

\_\_\_\_\_  
Name (Full Name)

February 15, 2010

\_\_\_\_\_  
Date

Director of Technology

\_\_\_\_\_  
Position / Title

\_\_\_\_\_  
Legal Signature

## Certifications

This equipment has been tested and found to comply with FCC and CE Rules.

Operation is subject to the following two conditions:

- (1) This device may not cause harmful interference.
- (2) This device must accept any interference received. Including interference that may cause undesired operation.



Waste electrical and electronic products must not be disposed of with household waste. Please recycle where facilities exist. Check with you Local Authority or Retailer for recycling advice.



**NOTE:** THE MANUFACTURER IS NOT RESPONSIBLE FOR ANY RADIO OR TV INTERFERENCE CAUSED BY UNAUTHORIZED MODIFICATIONS TO THIS EQUIPMENT. SUCH MODIFICATIONS COULD VOID THE USER'S AUTHORITY TO OPERATE THE EQUIPMENT.

### ADVERTENCIA

En todos nuestros equipos se mencionan claramente las características del adaptador de alimentación necesario para su funcionamiento. El uso de un adaptador distinto al mencionado puede producir daños físicos y/o daños al equipo conectado. El adaptador de alimentación debe operar con voltaje y frecuencia de la energía eléctrica domiciliar existente en el país o zona de instalación.



## Product Warranty Registration

Please take a moment to register your product online.  
Go to TRENDnet's website at <http://www.trendnet.com/register>