

Print Server firmware upgrade procedure.

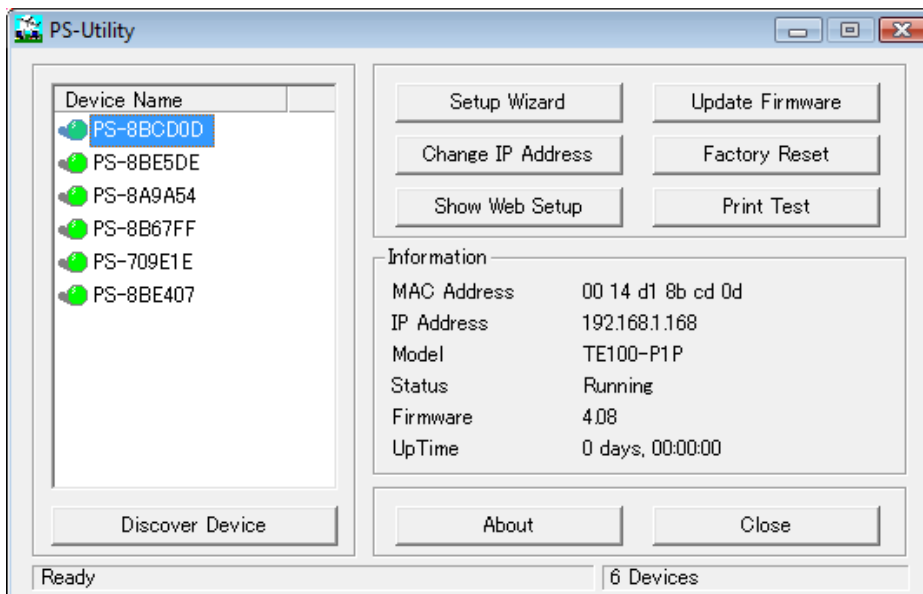
Warning:

- Do not interrupt upgrading process. Otherwise, it may cause damage in your device.

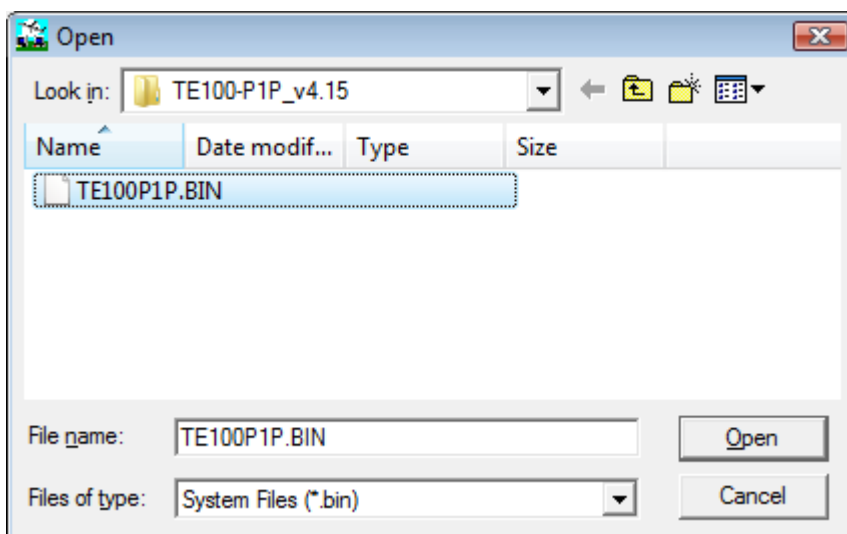
There are two ways to upgrade firmware.

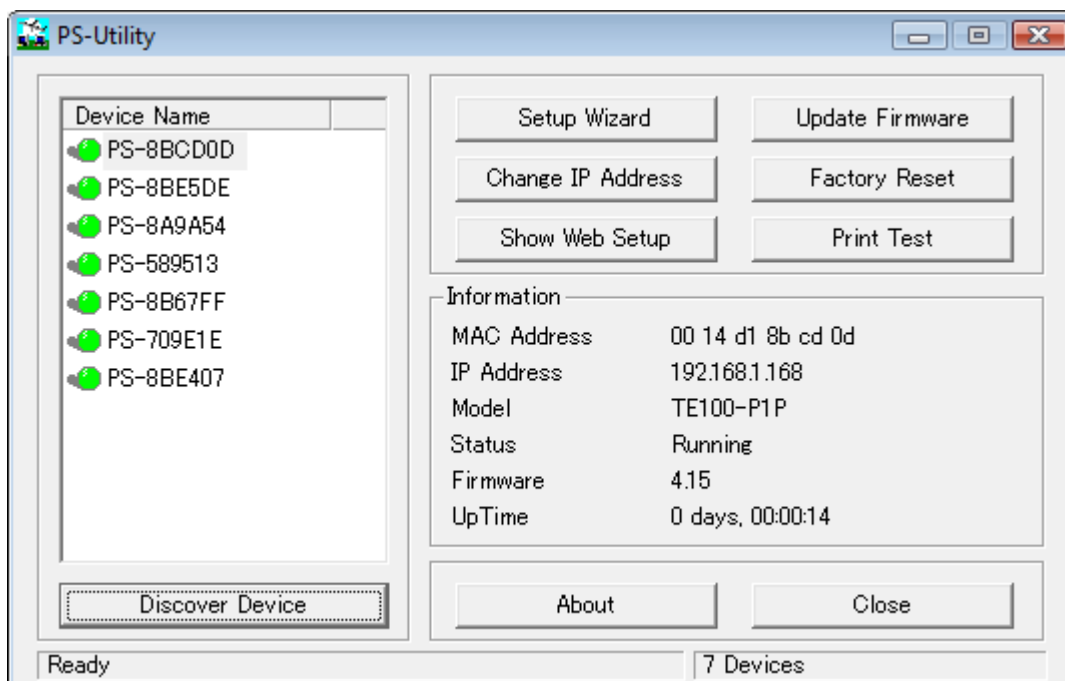
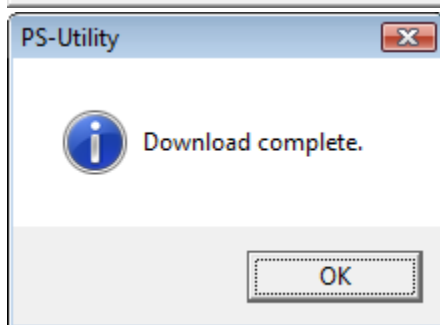
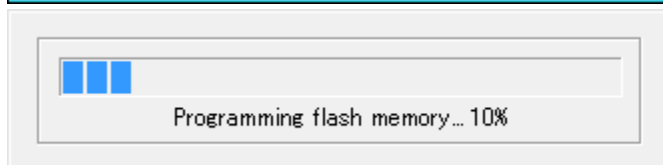
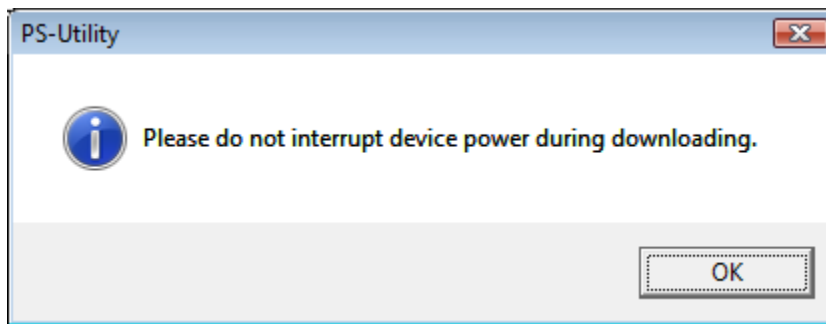
1. From PS-Utility

- Select the device and click on its MAC ID in Discover Device



- Click on “Update Firmware” and select the firmware file (xxx.BIN) and click Open.
- Click Update and OK to start update

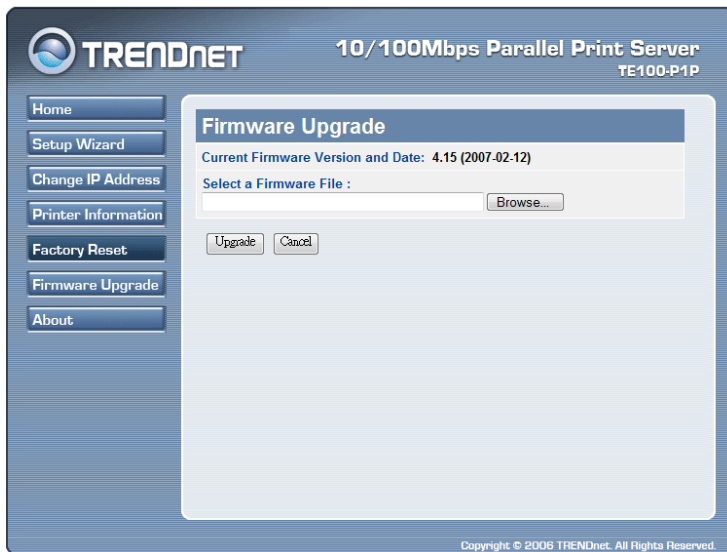




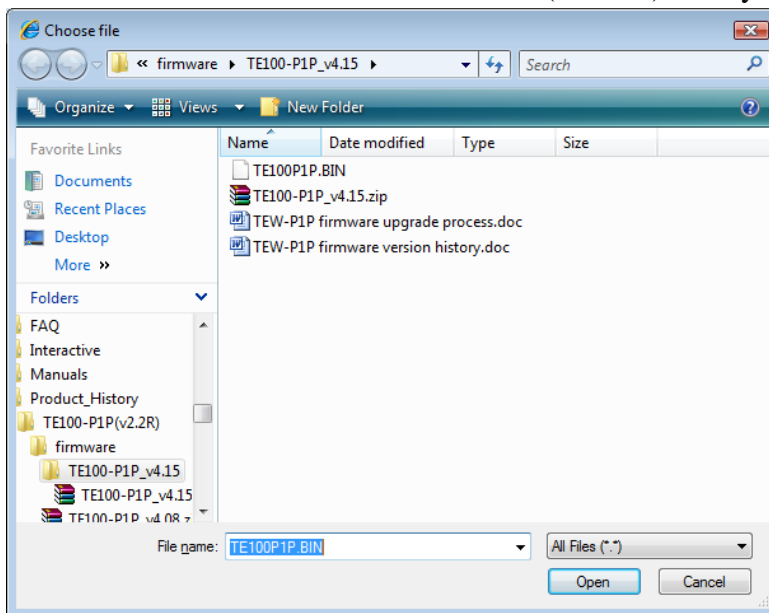
- Click "Factory Reset" and "Yes". Now, your firmware upgrade is done. You have to use PS-Utility to reset it's IP address back to original IP address

2. From Web browser:

- Type in Print Server's IP address in IE and enter configuration page
- Click the side button "Tool" and "Firmware Upgrade"

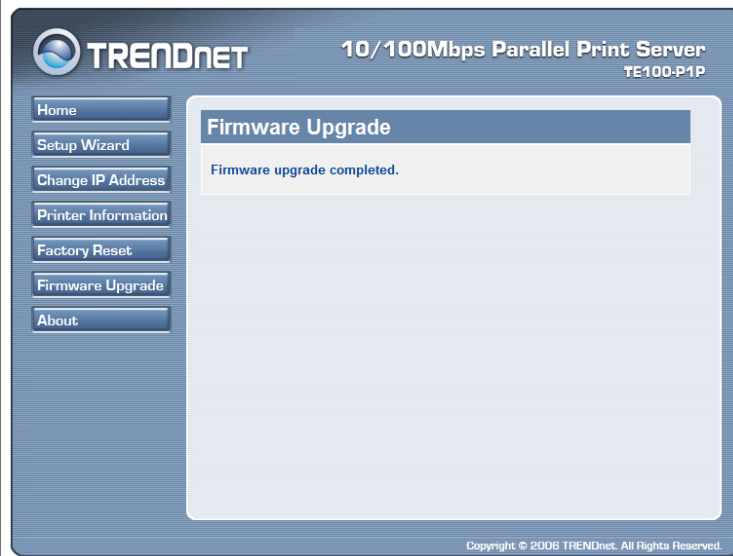


- Click Browse to find the firmware file(xxx.bin) from you local directory.



- Click "Open" and click "Upgrade"

- Wait for the progress finish, and then you will see “Firmware upgrade complete.”



- Click “Factory Reset” and “Yes”. Now, your firmware upgrade is done. You have to use PS-Utility to reset it’s IP address back to original IP address

