



## Quick Installation Guide



**TE100-P11**  
**TEW-P11G**  
H/W: V1

# Table of Contents

English .....	1
1. Before You Start .....	1
2. How to Install .....	3
3. Configure the Print Server .....	4
Troubleshooting .....	8

# 1. Before You Start



## Package Contents

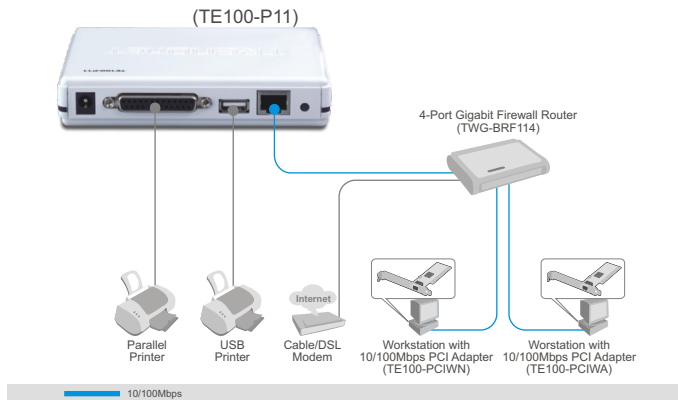
- TE100-P11/TEW-P11G
- Utility CD-ROM
- Multi-Language Quick Installation Guide
- AC Power Adapter (5V DC, 2A)

## System Requirements

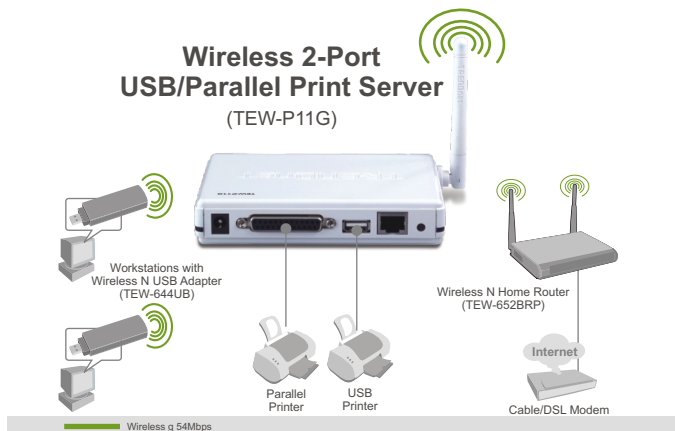
- CD-ROM Drive
- Windows 98SE/Me/2000/XP/2003 Server/Vista
- Wired or Wireless Router
- An Available DHCP Server – routers usually have a built-in DHCP server

## Application

### 2-Port USB/Parallel Print Server (TE100-P11)



### Wireless 2-Port USB/Parallel Print Server (TEW-P11G)



## 2. How to Install

**Note:** Please power off all printers before connecting them to the print server. Then turn on each printer after you make your hardware connections.

1. Connect a RJ-45 network cable from the LAN port on your Router to the **LAN** port of the Print Server.

2. Connect a Parallel or USB Printer to the printer server.

3. Connect the **AC Power Adapter** to the Print Server and then to a power outlet.

4. Power **ON** printer.



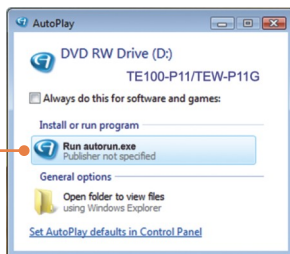
# 3. Configure the Print Server

**Note:** Disable any anti-virus and firewall programs before starting hardware installation.

## For Windows Users

1. Insert the **Utility CD-ROM** into your computer's CD-ROM Drive.

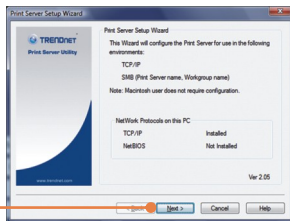
2. Click **Run autorun.exe** (Windows Vista only).



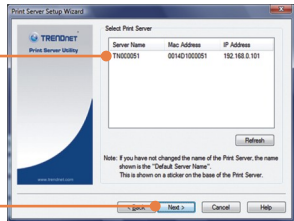
3. Click **Setup Wizard**.



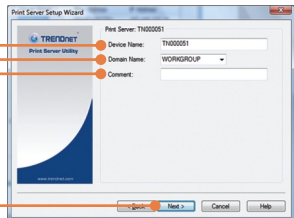
4. Click **Next**.



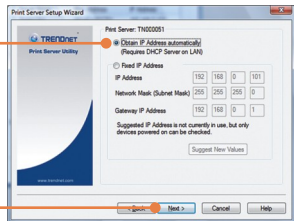
5. Select the print server and then click **Next**.



6. If desired, change the **Device Name**, **Domain Name** and add a **Comment** (optional). Then click **Next**.

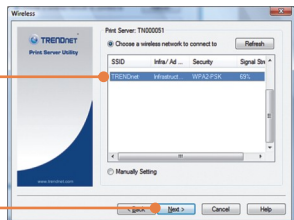


7. Select the **Obtain IP Address automatically** and then click **Next**.

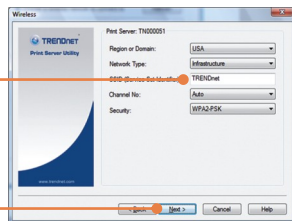


**Note:** If you have the TE100-P11, skip to step 11. If you have the TEW-P11G, continue on step 8.

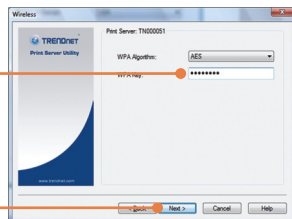
8. Select the desired wireless network and click **Next**.



9. The correct wireless settings should be automatically configured. Then click **Next**.



10. If enabled, enter the encryption key for your wireless network and then click **Next**. This example shows WPA2-PSK.

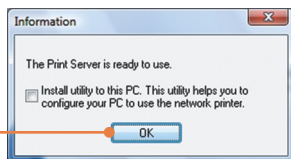


11. Click **Finish**.





12. Click **OK**.



13. Disconnect the RJ-45 cable and unplug the power. Then plug the power back in (TEW-P11G only).

## **Print Server configuration is now complete.**

For detailed information regarding adding printers for Windows 98SE/ME/2000/XP/2003 Server/Vista, please refer to the User's Guide on the Utility CD-ROM or TRENDnet's website at [www.trendnet.com](http://www.trendnet.com)

### **Register Your Product**

To ensure the highest level of customer service and support, please take a moment to register your product Online at: [www.trendnet.com/register](http://www.trendnet.com/register)  
Thank you for choosing TRENDnet

**Q1. The Setup Wizard is unable to see my printer server. What should I do?**

**A1.** First, double check your hardware connections; make sure that the print server is powered **ON** and is properly connected. Second, click **Refresh**. Third, disable any software firewall programs (e.g. ZoneAlarm). If your computer is running Windows XP or Vista, disable the built in firewall program. Fourth, unplug the power to the print server, wait 15 seconds, then plug the power back in.

**Q2. How do I add a printer to my computer?**

**A2.** Please refer to the User's Guide on the CD-ROM for instructions on adding a printer.

**Q3. I configured my print server to automatically receive an IP Address from a DHCP server but I can't log in to the browser configuration for the print server.**

**A3.** Open the Setup Wizard (See 3. Configure the Print Server) to locate your print server's IP Address. Then type in the IP address into your browser.

**Q4. After I successfully configured the TEW-P11G to match my wireless network settings, I can not connect to the print server.**

**A4.** First, verify that the wireless settings match your wireless network settings. Second, make sure to disconnect the Ethernet cable from the print server and verify that the **WIRELESS** LED is lit.

If you still encounter problems or have any questions regarding the **TE100-P11/TEW-P11G**, please refer to the User's Guide included on the Utility CD-ROM or contact TRENDnet's Technical Support Department.

## Certifications

This equipment has been tested and found to comply with FCC and CE Rules.

Operation is subject to the following two conditions:

- (1) This device may not cause harmful interference.
- (2) This device must accept any interference received. Including interference that may cause undesired operation.



Waste electrical and electronic products must not be disposed of with household waste. Please recycle where facilities exist. Check with you Local Authority or Retailer for recycling advice.



**NOTE:** THE MANUFACTURER IS NOT RESPONSIBLE FOR ANY RADIO OR TV INTERFERENCE CAUSED BY UNAUTHORIZED MODIFICATIONS TO THIS EQUIPMENT. SUCH MODIFICATIONS COULD VOID THE USER'S AUTHORITY TO OPERATE THE EQUIPMENT.

### ADVERTENCIA

En todos nuestros equipos se mencionan claramente las características del adaptador de alimentación necesario para su funcionamiento. El uso de un adaptador distinto al mencionado puede producir daños físicos y/o daños al equipo conectado. El adaptador de alimentación debe operar con voltaje y frecuencia de la energía eléctrica domiciliar existente en el país o zona de instalación.



## Product Warranty Registration

Please take a moment to register your product online.  
Go to TRENDnet's website at <http://www.trendnet.com/register>

**TRENDnet**<sup>®</sup>  
20675 Manhattan Place  
Torrance, CA 90501  
USA