



**TRENDNET**®



User's Guide

**TE100-MP1UN**  
H/W: V1.0R

# Table of Contents

---

<b>Chapter 1 Introduction</b>	<b>1</b>
Features.....	1
Safety Instructions .....	1
Package Contents.....	2
Physical Details .....	3
<b>Chapter 2 Setup</b>	<b>6</b>
Overview .....	6
Using the Windows Wizard.....	6
<b>Chapter 3 Web-Based Management</b>	<b>12</b>
Overview .....	12
Preparation.....	12
Connecting to the WiredPrint Server.....	12
Configuration Screens .....	13
<b>Appendix A Specifications</b>	<b>16</b>
General Specifications.....	16

*This chapter provides an overview of your Print Server's features.*

## Features

Congratulations on the purchase of your new TE100-MP1UN. Your Print Server was designed to provide a simple and efficient network printing solution.

- Turns a standalone multi-function printer/fax/scanner into a shared network resource
- Provides high speed USB printing, faxing and scanning for everyone on the network
- Works with most Windows based operating systems
- Manage the print server with the utility or Web browser
- Share a multi-function printer on a Local Area Network
- Supports most USB printers and All-In-One multi-function printers
- Easy to use Windows based utility program and Web based configuration
- Includes one USB 2.0 port and one RJ-45 10/100Mbps auto-sensing Fast Ethernet port
- 3-year limited warranty

## Safety Instructions

For your own safety, and to protect your Print Server, please observe the following safety advice.

1. Unplug this device from its power source before cleaning. Use only a slightly dampened cloth for cleaning. Do not use liquid or aerosol cleaners.
2. Avoid using this product near water. Exposure to water poses an electric-shock hazard.
3. Do not place the Print Server on an unstable surface. The device may fall causing serious damage to the device.
4. This device should only be used with the power supply type specified on the marking label. If you are not sure of type of your local power supply, consult your dealer or the local power company.
5. Do not pinch, crimp or otherwise damage the power cord. If exposed to foot traffic, ensures that the cable is properly shielded and does not pose a tripping hazard.
6. If using an extension cord, makes sure the total ampere rating of the products using the cord does not exceed the extension cord's ampere rating.
7. Do not attempt to service this device, as opening or removing casing may expose you to dangerous voltage points or other risks. Refer all servicing to qualified service personnel.
8. The Print Server should be serviced by qualified service personnel under the following conditions:
  - The power cord is damaged or frayed.
  - Liquid has been spilled onto the product.
  - The product has been exposed to rain or water.
  - The product does not operate normally in accordance with the operating instructions.
  - The device has been dropped or the casing has been damaged.

## Package Contents

You should find the following items packaged with your Print Server. If any items are missing, contact your dealer immediately.

- The Print Server unit
- Power Adapter
- One CD-ROM containing all support programs and this manual
- Quick Install Guide



## Physical Details

Details of the LEDs and connections are in this Chapter. Further details are contained in *Appendix A - Specifications*.

### TE100-MP1UN

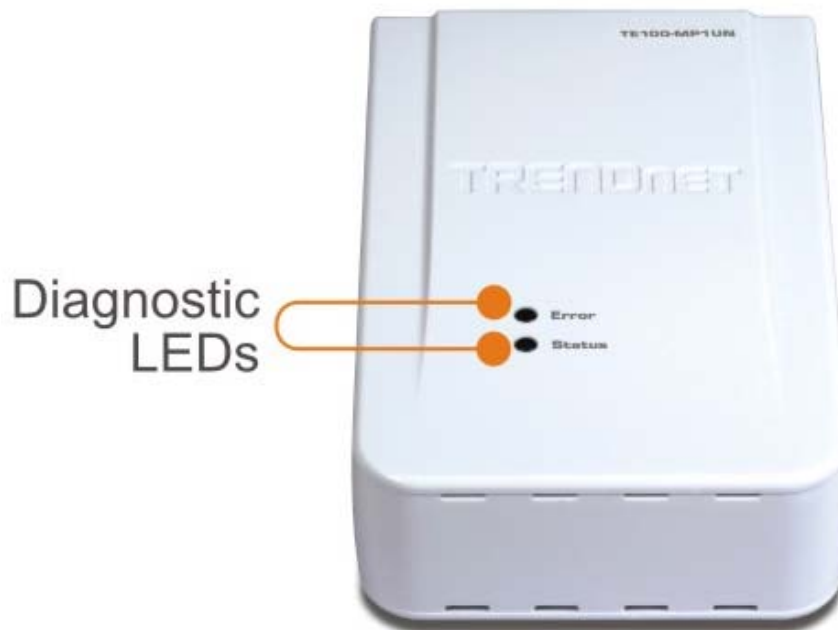
- Power jack connector
- 10/100Mbps RJ-45 Ethernet port
- 1 USB 2.0 printer port
- Reset button



**Figure 1: TE100-MP1UN**

## LED Indicators

The Print Server has LED indicators on the top. The Error LED is red. The Status indicator LED is green. The LED indicator modes are described in the following table.



Status LED (Green)	Error LED (Red)	Status Description
Off	Off	No power.
On	Off	Normal operation - Idle.
Flashing	Off	Normal operation - transmitting or receiving packets from the network.
On	On	No printer connected.
Flashing	Flashing	Firmware upgrade in progress.

## Diagnostic Push Button

The button is recessed; a pin or paper clip can be used to press it. This button has 2 functions:

- Restore the factory default settings
- Print a test page containing all current settings.

**To restore the factory default settings:**

1. Turn the Print Server OFF.
2. Press and hold the diagnostic button. While pressing the button, switch the Print Server ON.
3. If you continue pressing the button for 10 seconds, a diagnostic page will be printed, showing the new (default) settings.

**To generate a Diagnostic print out**

1. Ensure that both the Print Server and the attached printer are ON.
2. Press the diagnostic button, and hold it in for 2 seconds.
3. The test page, containing the current settings, will be printed.

**Note:**

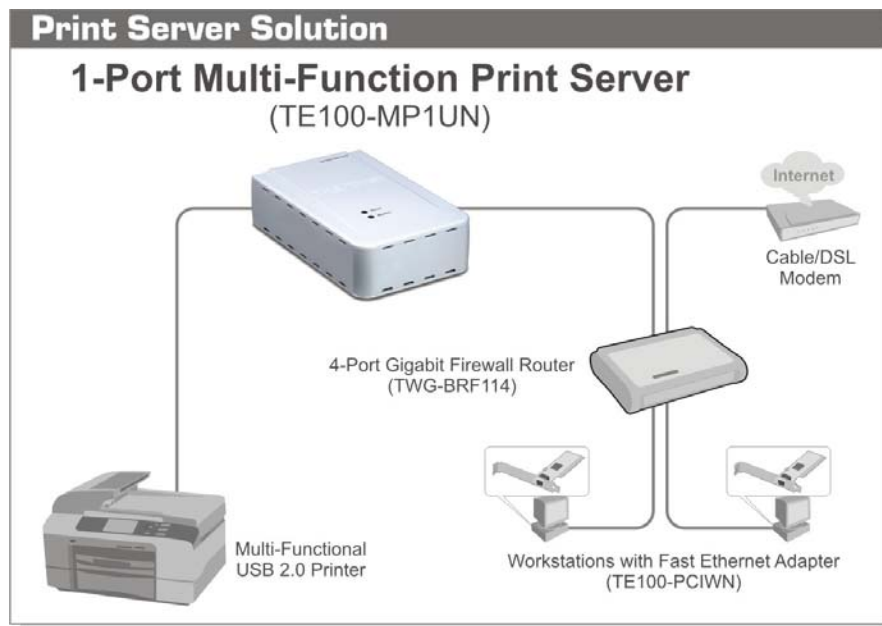
PostScript printers are unable to print this page. If you have a PostScript printer, the test page will not be printed.

*This chapter provides an overview of the configuration process.*

## Overview

The Print Server is designed to support many different platforms, and the configuration required would depend upon the environment in which it is installed.

- The Print Server usually requires configuration, but if there's a DHCP server on your network, then the device is just plug-and-play. A Windows-based setup Wizard is also provided on the CD-ROM to simplify this task.
- PCs wishing to use the printer attached to the Print Server always require configuration.



## Configuration Methods

The following methods are available to perform the required Print Server configuration:

- **Windows-based Wizard** - see below for details.
- **Web-based setup** - see Chapter 4 for details.

## Using the Windows Wizard

The Windows-based Wizard is supplied on the CD-ROM, and runs on Windows XP and Windows Vista.

Using this Wizard is the recommended method to configure the Print Server.

It can be used to configure the Print Server for your Network environment, even if the Print Server does not have a valid IP address.

## Preparation

- Ensure the power is OFF. Do not connect the Print Server while power is On.
- Find the *Default Server Name* for your Print Server. The *Default Server Name* is shown on a sticker on the base of the device. It consists of 8 letters and/or digits. Record this name; it may be needed during configuration.



## Procedure

1. Insert the supplied CD-ROM into your drive. If the setup program does not start automatically, run *Autorun.exe* in the root folder.
2. On the first screen, shown below, click *Setup Wizard*.



**Figure 2: Main Screen**

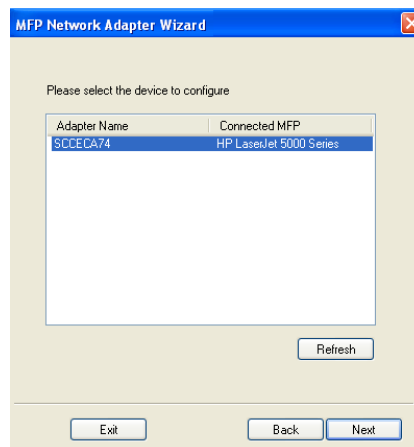
3. Click *OK* to follow the setup procedures:
  - (1) Connect MFP/All-in-one machine to Print Server.
  - (2) Connect both PC and Print Server to Router or Hub.
  - (3) Power ON MFP/All-in-one.
  - (4) Power ON Print Server.
  - (5) Check the LED on the Print Server. Status LED (Green) should be ON and Error LED (Red) is OFF.



- To use the LAN interface, the LAN cable needs to be inserted **BEFORE** powering ON.
- The Wired (LAN) interface should be used for initial configuration.

Or click *Skip* if all the above steps have been done already.

4. Select your Print Server, and then click *Next* to continue.

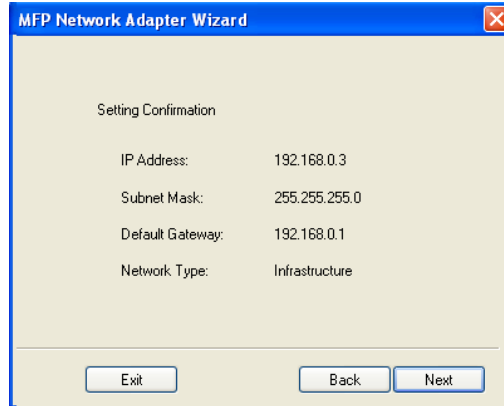


**Figure 3: Wizard Screen**

5. Select the desired Print Server. If the Print Server does not show up, click the Refresh button.
6. Click *Next* to configure the *IP Address* screen.
  - Select *Obtain IP Address automatically* if you're LAN has a DHCP Server, otherwise select *Use following IP address*.

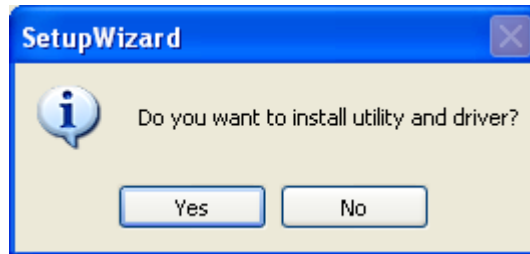
- For *Use following IP address*, enter an unused address from the range used on your LAN. Use the same *Subnet Mask* and *Default Gateway* as PCs on your LAN.

7. Click *Next* to see the following screen.



**Figure 4: Status Screen**

8. Click *Next* and you will see the following prompt.



9. Click *Yes* to install the utility and bus driver. Follow the prompts to complete the installation.

10. Click *Finish*.

### **If the desired Print Server is not listed:**

- Check that both the Print Server and the printer are properly connected, and powered on.
- Check that the proper Printer Driver has been installed.

## **Other PCs Setup**

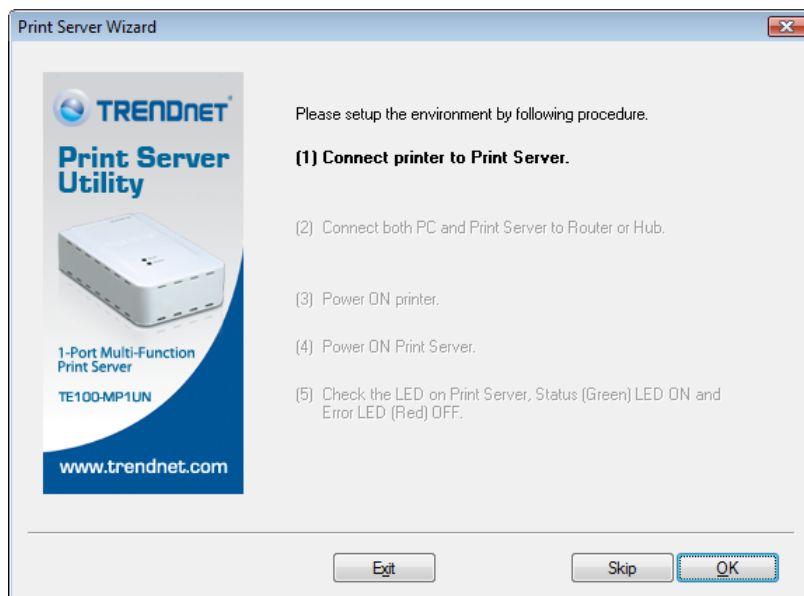
If the Print Server is configured already, and you want other client PCs to use it, do the following procedure:

1. Insert the supplied CD-ROM into your drive. If the setup program does not start, run *Autorun.exe* in the root folder.
2. Click *PC Install* to install the utility and bus driver.




**Figure 5: Main Screen**

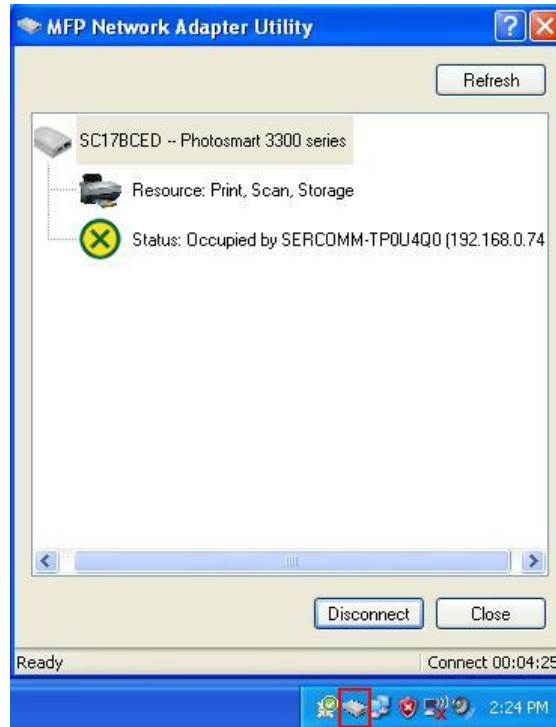
3. Follow the prompts to complete the installation.
4. The Print Server Utility will then run.



**Figure 6: Print Server Utility Screen**

## MFP Print Server Utility Setup

1. The program will search for the Printer Servers on the network, and the *Print Server Utility* screen will be displayed.
  - The names of the attached printer servers will be displayed if possible.
  - If the printer is occupied by other user, the status field will display the information of the user and IP address. Otherwise the default status icon should be  if the printer is available.

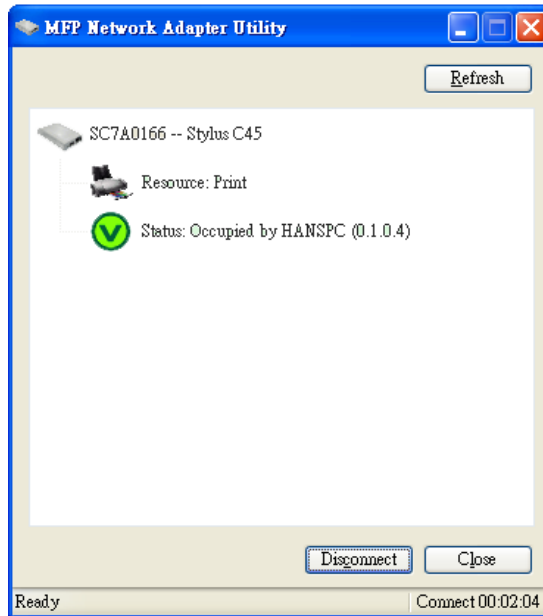


**Figure 7: Print Server Icon**

### **If your Print Server is not listed:**

- Check that both the Print Server and the printer are properly connected, and powered on.
- Check that the proper Printer Driver has been installed.

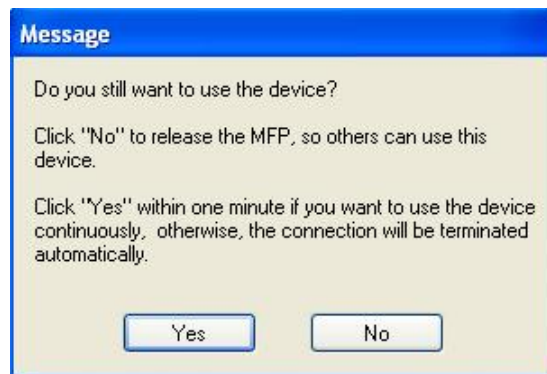
2. Once the Print Server has been connected successfully, the button will show "Disconnect" instead of "Connect".



**Figure 8: Utility Screen**

3. Configuration is now complete.

**Note:** If Print Server has been idled for 5 minutes after connected, you will see the following message.



**Figure:9 Idle Message**

The Print Server will be disconnected automatically if you don't respond to the message within 1 minute.

# Chapter 3

## Management

# 3 Web-Based

*This chapter explains how to use your Web Browser to configure the Print Server.*

### Overview

The Print Server incorporates the HTTP server. This allows you to connect to the Print Server and configure it using your Web Browser. Most browsers should work, provided they support tables and forms.

### Preparation

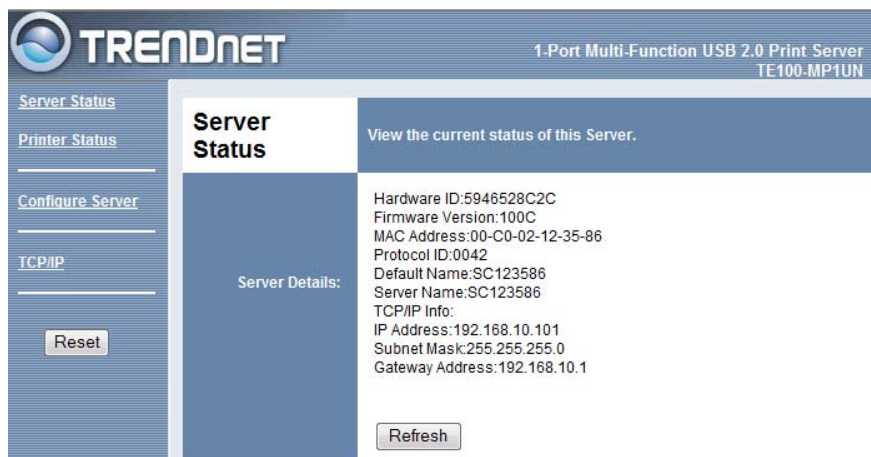
Because it supports dynamic IP Address allocation using DHCP or BOOTP, the Print Server ships with an IP Address of 0.0.0.0. This is NOT a valid IP Address.

Therefore, you must do ONE of the following:

- Check your **DHCP server** (if you have one), and determine the IP Address allocated to the Print Server.
- Use the **Diagnostic Button** (if fitted) to print a report which includes the current IP address. (Press the Diagnostic Button, and hold it for 2 seconds.)
- Use the **Setup Wizard** or another Print Server utility to allocate a valid IP Address to the Print Server.

### Connecting to the Print Server

1. Start your Web Browser.
2. In the *Address* box, enter *HTTP://* followed by the IP Address of the Print Server.  
e.g. `http://192.168.0.100`
3. You will then be prompted for the password. If no password has been set, just press ENTER.
4. Use the menu bar to move from one screen to another. Remember to save each screen before changing to a different screen.



**Figure 10: Server Status Screen**

## Configuration Screens

The following configuration screens are available.

### TCP/IP

The screenshot shows the TrendNet configuration interface for a 1-Port Multi-Function USB 2.0 Print Server (TE100-IP1UN). The main heading is 'TCP/IP' with a sub-heading 'Settings for the TCP/IP network protocol. Using a fixed IP Address is recommended.' The interface is divided into sections: 'IP Address' with radio buttons for 'DHCP Client' and 'Fixed IP Address' (selected), and input fields for 'Device IP Address' (192.168.10.101), 'Subnet Mask' (255.255.255.0), and 'Gateway Address' (192.168.10.1). The 'Connection' section includes 'Delay before reconnection attempt (secs)' (2) and 'Number of reconnection attempts' (255). At the bottom are 'Get Defaults', 'Save', and 'Cancel' buttons. A sidebar on the left contains 'Server Status', 'Printer Status', 'Configure Server', 'TCP/IP', and a 'Reset' button.

Figure 11: TCP/IP Screen

IP Address	
<b>DHCP Client</b>	Select this if your LAN has a DHCP Server. The Print Server will then automatically obtain an IP address from the DHCP Server.
<b>Fixed IP Address</b>	Select this to assign a fixed IP address to the Print Server. If selected, you must enter the Device IP Address, Subnet Mask, and Gateway.
<b>Device IP Address</b>	IP Address assigned to the Print Server. Enter an unused IP address from the address range used on your LAN.
<b>Subnet Mask</b>	Use the same values as PCs on your LAN (or on the same LAN segment, if you have a Router).
<b>Gateway Address</b>	Use the same values as PCs on your LAN (or on the same LAN segment, if you have a Router).
Connection	
<b>Delay before reconnection attempt</b>	Sets how long the Print Server should wait before retrying a TCP/IP connection which is lost. Allowable values are from 0 to 255 seconds, with 2 as the default.
<b>Number of reconnection attempts</b>	Set how many attempts at reconnection will be made. After that, the TCP/IP session will be terminated. Allowable values are from 0 to 255, with 254 as the default.

## Other Screens

### Server Status

This screen shows server system data and the current settings for all of the other screens. It is read-only; no data can be input on this screen.

### Printer Status

This screen displays the current status of each port. For each port, the following data is listed:

- **Connected Printer**- the model name of the printer connected to the port, if the printer name is known. (If the printer is not bi-directional, this information is unavailable.)
- **Status** - the current status of the printer (On-line, Off-line, Out of paper)
- **Printing Information** - this will show either *Idle* or *Printing*.

### Configure Server

This screen displays the current status of each port. For each port, the following data is listed:

- **Print Server Name**- displays the model name of the Print Server. The Print Server name can be found on the bottom of the device base. The Print Server name can be changed by clearing the field and typing in a new name.
- **Password** - Enter a password for the user "admin", who will have full access to the Web-based management interface. When changing the password, you must enter it again to verify the new password.9\*

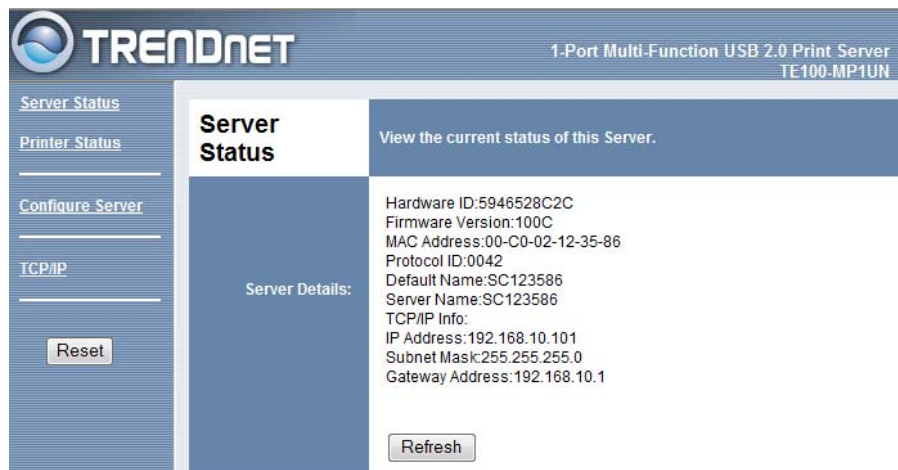
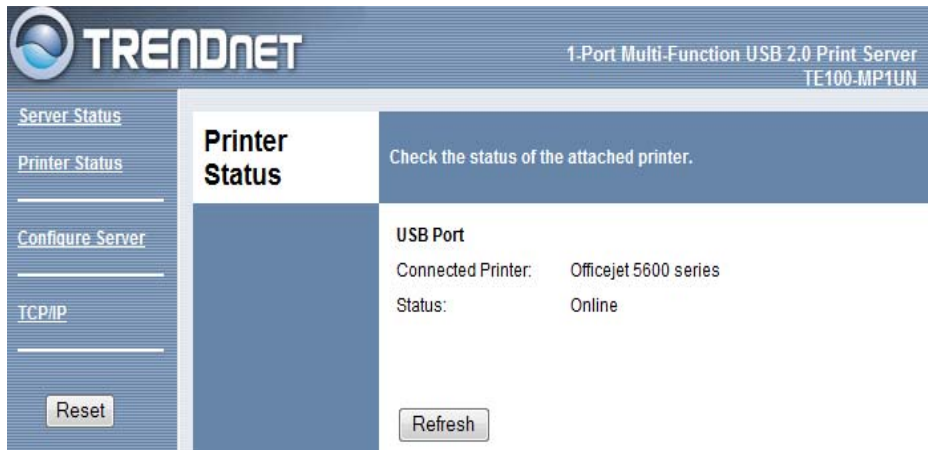
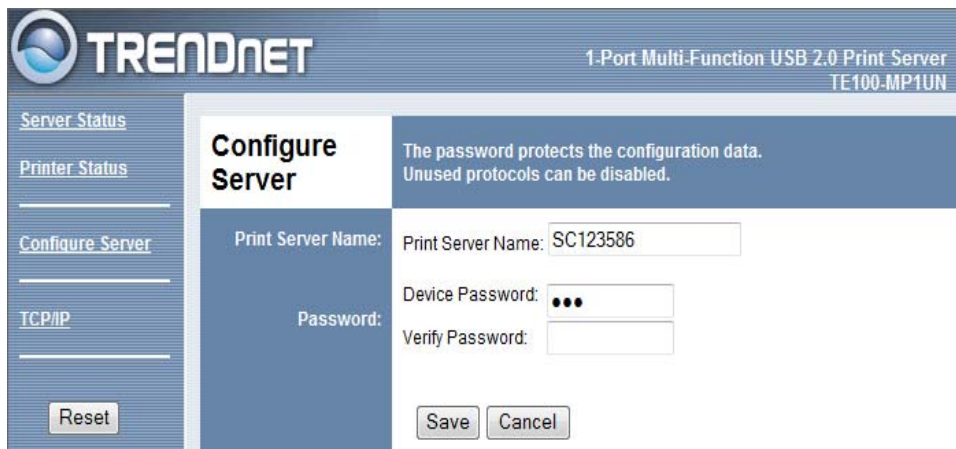


Figure 12: Server Status Screen





**Figure 13: Printer Status Screen**



**Figure 14: Configure Server Screen**

**General Specifications**

<b>TE100-MP1UN</b>	
Power Consumption	5.5w max.
External Power Adapter	5V DC
LEDs	2
USB 2.0 Port	1
Ethernet Connector	10BaseT/100BaseTx
FCC / CE	FCC, CE. Class B

<b>Environmental Specifications</b>	
Operating Temperature	0 ~ 40°C
Storage Temperature	-10 ~ 70°C
Shipping Temperature	-40 ~ 70°C
Operating Humidity	10 ~ 80%
Storage Humidity	5 ~ 90%
Shipping Humidity	5 ~ 100%



**TRENDnet**®

## Product Warranty Registration

Please take a moment to register your product online.  
Go to TRENDnet's website at <http://www.trendnet.com/register>

**TRENDnet**®

20675 Manhattan Place  
Torrance, CA 90501  
USA