

TE100-DX8Eplus

8-Port 10/100Mbps Dual Speed Hub with Switched Uplink Port

TRENDnet's TE100-DX8Eplus is an 8-port palm-size dual speed hub that presents a quickest way to build or expand a Fast Ethernet network. Each port automatically detects and negotiates 10Mbps and 100Mbps connections. With built-in switch, it allows communication between network end nodes operating at different speeds. These hubs support one switch port that allows your hub to be uplinked together without considering the uplink rule of 10Mbps and 100Mbps hubs. An uplink port extends the distance to 100 meters with 10Mbps or 100Mbps hub stacks. TRENDnet's TE100-DX8Eplus is perfect for small workgroups to expand as their networking needs grow.



FEATURES

- Compatible with IEEE 802.3 10Base-T Ethernet
IEEE 802.3u Fast Ethernet standards
- 8 10/100Mbps auto-negotiation ports
- Fast Ethernet supports both shielded twisted pair
and CAT 5 unshielded twisted pair cables
- MID-II uplink port for easy expansion
- Built-in switch function intercommunicates between
10Mbps and 100Mbps segments
- Plug and Play with auto-configuration
- One switch port supports 100Mbps uplink distance
up to 100 meters
- External power adapter included
- Uplink jack for easy linking of two hubs to further
expands the network
- 5 Year Warranty

BENEFITS

- **Performance:**
Full 100Mbps connectivity significantly
boosts network performance.
- **Expandability:**
Uplink to another 100Mbps hubs up to
100 meters away by using the switched
uplink port and UTP/STP CAT 5 cable.
- **Flexible:**
Seamless integration of 10Base-T and
100Base-TX networks.
- **Cost-Effectiveness:**
Provides 10Mbps, 100Mbps hub and
10/100 switching functionality in one
unit.
- **Easy Upgrade:**
Ethernet workgroups can be upgraded
to Fast Ethernet without changing hubs.



TE100-DX8Eplus

8-Port 10/100Mbps Dual Speed Hub with Switched Uplink Port

SPECIFICATIONS

Standards:

- IEEE 802.3 10Base-T Ethernet,
IEEE 802.3u 100Base-TX Fast Ethernet standards

Protocols:

- CSMA/CD

Data Transfer Rate:

- 10/100Mbps

Topology:

- Star

Network Media:

- UTP CAT 5 (100 m), EIA/TIA-568 100-ohm
screened twisted pair (STP) (100 m)

Power Consumption:

- 12 Watts max. AC external power adapter

Diagnostic LEDs:

- System: Power, 10M Collision, 100M Collision,
EXP-FDX
- Port: 10M Link/Act, 100M Link/Act

Dimensions:

- 171 x 98 x 29 mm
(6.73 x 3.86 x 1.14 inches)

Weight:

- 453 g (1.0 lb.)

Temperature:

- Operating: -10° to 40° C (14° to 104° F)
- Storage: -20 to 70° C (-4° to 158° F)

Humidity:

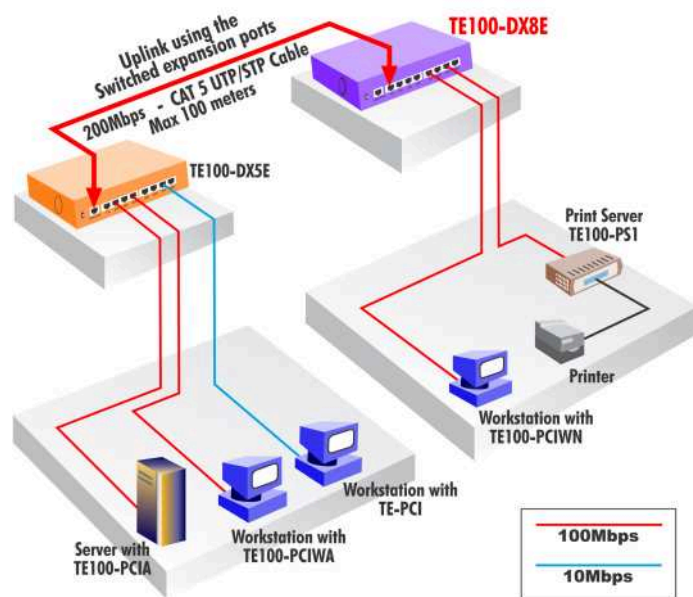
- Operating: 10 % to 90 % non-condensing
- Storage: 5 % to 90 % non-condensing

Certifications:

- FCC, CE, VCCI



NETWORKING SOLUTIONS



PRODUCT INFORMATION

→ **TE100-DX5Eplus**
5-port 10/100Mbps Dual Speed Hub with
Switched Uplink Port

→ **TE100-DX8Eplus**
8-port 10/100Mbps Dual Speed Hub with
Switched Uplink Port

ORDERING INFORMATION



TRENDware International, Inc.

3135 Kashiwa Street
Torrance, CA. 90505. USA
Tel: 310-891-1100
Fax: 310-891-1111
Web: www.trendware.com
Email: sales@trendware.com

To Order Please Call:
1-888-326-6061