

TE-SK1 5-Port 10Base-T Hub Ethernet Starter Kit

The TE-SK1 is designed as a total solution for connecting two personal computers to enable them to share files, printers, fax servers, and/or email. TRENDnet's TE-SK1 features a 5-port 10Base-T hub and two PCI Ethernet Cards. TRENDnet's network starter kits are specially designed for home and small office use and can support up to 5 network nodes without expansion. There is enough room on the hub to add a server, network printer, and a third personal computer.



FEATURES

5-port 10Base-T Hub (TE-500)

- 5-port 10Base-T
- Uplink port for cascading to another 10Base-T hub
- Small size and weight for portability
- Full diagnostic LED's for power, collision, and link/Rx status
- 5 Year Warranty

32-Bit PCI Ethernet 10Base-T Card (TE-PCIWT)

- Supporting 32-bit PCI Bus
- Plug and Play
- Compatible with all major Network Operating Systems
- 5 Year Warranty

BENEFITS

- **Upgradable:**
Add nodes as needed.
- **Expandable:**
Add a server, internet station, network printer or a third PC without changing the hub.
- **Flexible:**
Hub is smaller enough to be put anywhere it is needed.
- **Cost Effective:**
Buy only the part you need.
- **Reliable:**
5 year warranty.



TE-SK1

5-Port 10Base-T Hub Ethernet Starter Kit

SPECIFICATIONS

TE-500

DC Input:

- 5-16 VDC

Power Consumption:

- 2W Max.

Cabling:

- EIA Category 3,4 and 5 STP/UTP

Uplink Port:

- Shared Port #5 (slide switch)

Dimensions:

- 102 x 81 x 25mm (LxWxH)

Weight:

- 114 grams (excluding power adapter)

Operating Temperature:

- 0° - 55° C

Certification:

- FCC, UL, , C-tick, CE

TE-PCIWT

Standards:

- IEEE 802.3 10Base-2 and 10Base-T

Data Transfer Rate:

- 10Mbps (Half Duplex) / 20Mbps (Full Duplex)

Topology:

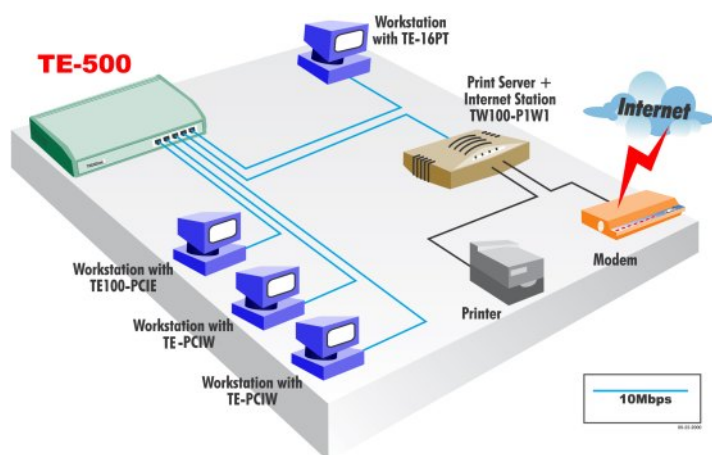
- Star or Bus (Dependent on media type)

Diagnostic LED's:

- Tx/Rx, Link, and UTP/BNC Media



NETWORKING SOLUTIONS



To Order Please Call:
1-888-326-6061

PRODUCT INFORMATION

- **TE-SK1:** 5-Port 10Base-T Hub Ethernet Starter Kit
(2 x TE-PCIWT, 1 x TE-500, 2 x 15' CAT 5 cables)
- **TE100-SK1:** 5-Port 100Base-T Hub Fast Ethernet Starter Kit
(2 x TE100-PCIW, 1 x TE100-H5E, 2 x 15' CAT 5 cables)
- **TE100-SK2:** 4-Port 10/100Mbps Dual Speed Starter Kit
(1 x TE100-PCIWplus, 1 x TE100-DX4PCI, 1 x 15' CAT 5 cables)
- **TE100-SK3:** 5-Port 10/100Mbps Switch Fast Ethernet Network Kit
(2 x TE100-PCIWN, 1x TE100-S55E, 2 x 20' CAT 5 cables)
- **TE100-SK3plus:** 5-Port 10/100Mbps Switch Fast Ethernet Network Kit
(2 x TE100-PCIWN, 1x TE100-S55Eplus, 2 x 20' CAT 5 cables)
- **TE100-SK4:** 10/100Mbps Switched Fast Ethernet Network Kit
(2 x TE100-PCIWN, 1 x TE100-S5P, 2 x 15' CAT 5 cable)

ORDERING INFORMATION

TRENDware International, Inc.

3135 Kashiwa Street
Torrance, CA. 90505. USA

Tel: 310-891-1100

Fax: 310-891-1111

Web: www.TRENDNET.com

Email: sales@trendware.com

