

TE-310 ***EtherPort Multi-Protocol Print Server (2 Parallel, 1 Serial)***

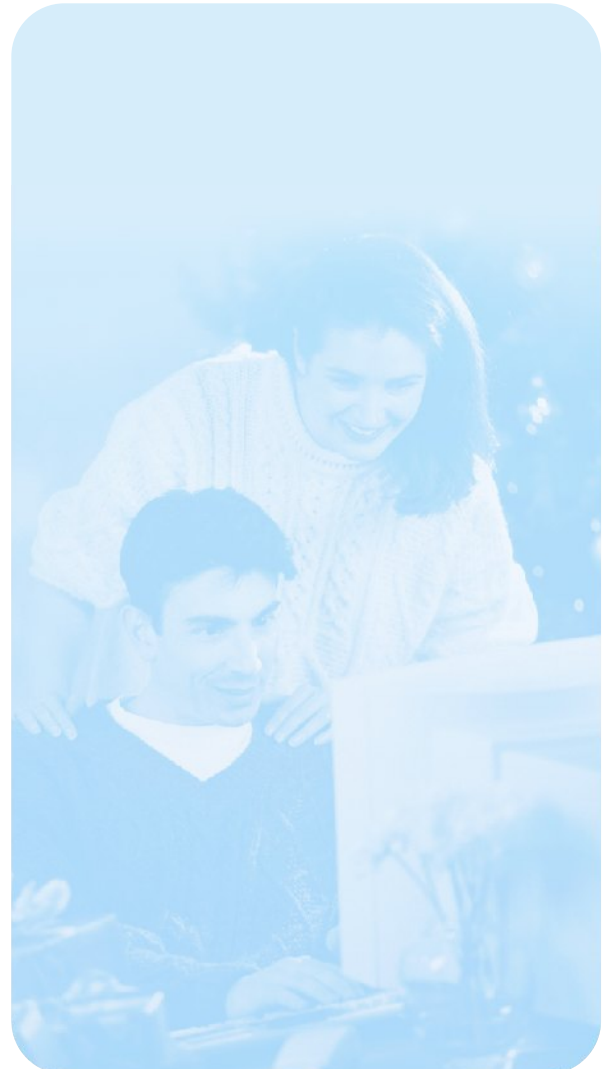
The TE-310 Etherport Mutil-Protocol Print Server is designed to provide simple and efficient network printing solutions. By connecting the printing devices to the Etherport Print Server instead of a file server or workstation, you can reduce system loading and increase printing performance.

Designed with versatility in mind, the TE-310 supports multi-protocol: IPX/SPX and TCP/IP. The print servers feature both UTP (RJ-45) and BNC (Thin Coax) Ethernet interface ports.



FEATURES

- Supports IPX/SPX and TCP/IP protocols
- Supports Netware, Windows 95/NT, and Unix
- Supports up to three logical printers
- Supports Netware 4.x NDS
- Netware remote printer and print server modes are supported
- Provides "Quickset" for fast and easy installation
- In-field firmware upgrade
- Diagnostic LEDs
- 10Mbps data transfer rate
- 5 Year Warranty



TE-310

EtherPort Multi-Protocol Print Server (2 Parallel, 1 Serial)

SPECIFICATIONS

Network Interface Standards:

- IEEE 802.3 10Base-T and 10Base-2

Printer Ports:

- Two parallel ports
- One serial port

Supported Frame Types:

- Ethernet 802.2
- Ethernet 802.3
- Ethernet SNAP
- Ethernet II

Dimensions:

- 203 x 127 x 27 mm (L x W x D)

Certifications:

- FCC Class A, UL, & CSA Approved



PRODUCT INFORMATION

***> **TE-310**
EtherPort Multi-Protocol Print Server (2
Parallel, 1 Serial)

***> **TE-360**
EtherPort Jr. Multi-Protocol Print Server (1
Parallel)

ORDERING INFORMATION



TRENDware International, Inc.
3135 Kashiwa Street
Torrance, CA. 90505. USA
Tel: 310-891-1100
Fax: 310-891-1111
Web: www.TRENDNET.com
Email: sales@trendware.com

To Order Please Call:
1-888-326-6061