



TE-1820 **16-Port 10Base-T Ethernet Hub**

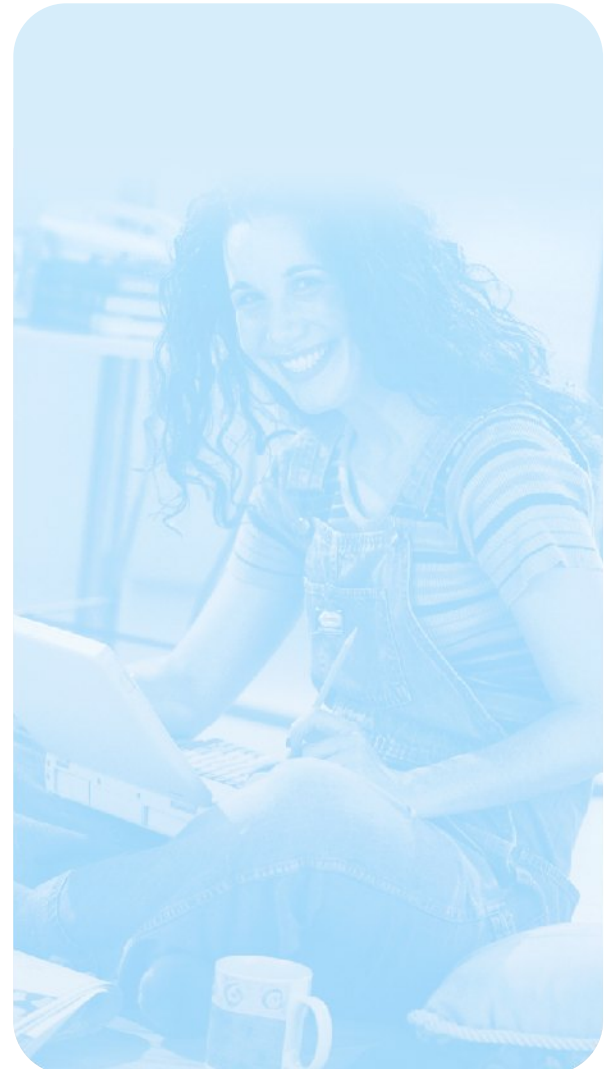
The TE-1820 rack mountable hub provides high capacity connectivity for use in medium to large corporate networks. It is designed to meet EIA-19" rack mounting standards. In addition to the built-in RJ-45 ports, it provide connectivity for AUI and BNC as well. For added durability the TE-1820 is protected by a heavy gauge metal chassis.

The TE-1820, functions as a multi-port repeater, handle collision processing, signal regeneration and transmitted signal pre-distortion function, and halt transmission in case of total loss of reception over a link.



FEATURES

- ...→ Compliant with IEEE 802.3 10Base-T, 10Base-2, and 10Base-5 standards
- ...→ MDI-X/MDI button on 1st port for easy hub cascading
- ...→ EIA-19" rack mountable
- ...→ Auto-partitioning function to isolate network failure
- ...→ LED indicators for easy troubleshooting
- ...→ 10Mbps transfer rate
- ...→ 5 Year Warranty



TE-1820

16-Port 10Base-T Ethernet Hub

SPECIFICATIONS

Standards:

- IEEE 802.3 10Base-T, 10Base-2, and 10Base-5

Ports:

- 16 RJ-45, 1 BNC, and 1 AUI

Input Power:

- AC 100V to 250V 50/60Hz, auto-selecting

Power Consumption:

- 18W

Dimensions:

- 483mm x 44mm x 125mm
(including mounting brackets)

Weight:

- 2.0kg

Operating Temperature:

- 0° to 55° C

Operating Humidity:

- 10% to 90% non-condensing

Emissions:

- FCC class A

Certifications:

- UL, CSA



PRODUCT INFORMATION

- **TE-1420:**
12-Port 10Base-T Ethernet Hub
- **TE-1820:**
16-Port 10Base-T Ethernet Hub
- **TE-2620:**
24-Port 10Base-T Ethernet Hub

ORDERING INFORMATION



TRENDware International, Inc.
3135 Kashiwa Street
Torrance, CA. 90505. USA
Tel: 310-891-1100
Fax: 310-891-1111
Web:
Email: sales@trendware.com

To Order Please Call:
1-888-326-6061