



Quick Installation Guide

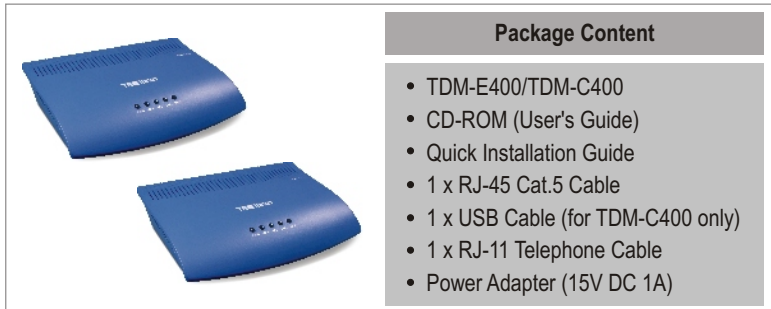


TDM-E400
TDM-C400

Table of Contents

English	1
1. Before You Start	1
2. Hardware Installation	3
3. Software Installation (TDM-C400 only)	4
4. Configuring the ADSL Modem through Ethernet or USB connection ..	7
Troubleshooting	10

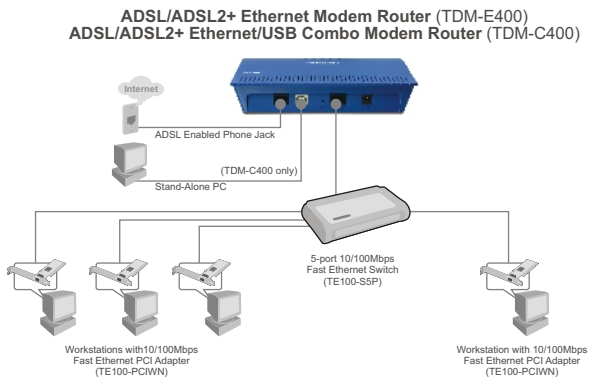
1. Before You Start



Installation Requirements

- ADSL/ADSL2/ADSL2+ service up and running on your telephone line.
- One or more computers each containing an Ethernet 10Base-T/100Base-T network interface card (NIC) and/or a single computer with a USB port
- An Ethernet hub or switch, if you are connecting the device to more than one computer on an Ethernet network
- Web browser: Internet Explorer v5.0 or later, or Netscape v6.1 or later

Application



Collect the following information from your ADSL2+ service provider

VPI value: _____

VCI value: _____

Encapsulation type: LLC/SNAP or VC/MUX

As well as:

For PPPoA (RFC2364) or PPPoE (RFC2516)

User Name: _____

Password: _____

Authentication method: PAP or CHAP

Host or IP address: _____

For Static or Fixed IP Connectin (RFC1483 or RFC1577)

Host: _____

Domain: _____

Gateway: _____

IP address: _____

Subnet Mask: _____

DHCP Server IP : _____

Primary DNS Server IP: _____

Secondary DNS Server IP: _____

2. Hardware Installation

1. Connect the RJ-11 cable.

2. Connect the RJ-45 cable (and/or connect the USB cable for TDM-C400 USB combo Model only).

3. Attach the power connector to the ADSL2+ ethernet router.



4. Allow the device 60 seconds to boot. Verify that the WAN and LAN LEDs are on.



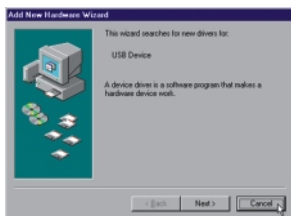
3. Software Installation (TDM-C400 only)

Note: For Windows 98/98SE applications, you may need the Windows 98/98SE CD ROM to complete the installation.

Before starting the software setup process, close all Windows programs currently running on your PC.

1. The system automatically detects the new hardware when the USB cable is connected to your PC
Click **Cancel**.

(Windows 98/98SE)



(Windows ME)



(Windows 2000)



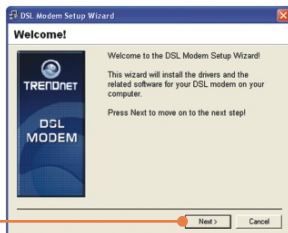
(Windows XP)



2. Insert the installation CD into the CD drive and click on the USB Utility button sub menu "TDM-C400". The installation should start.



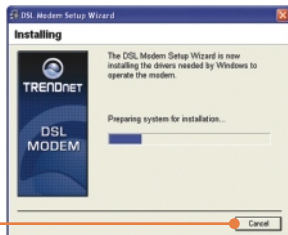
3. The “Welcome!” window appears. Exit all Windows programs before continuing. Then, click on **Next**.



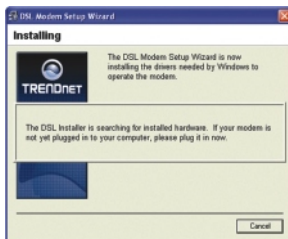
4. Please review the license agreement and click **Accept** to continue.



5. The USB Modem Setup Wizard will begin installing the software and indicates the progress of the installation.



6. If the installation wizard detects that the ADSL modem is not connected by USB, it prompts you to connect it in order to proceed.



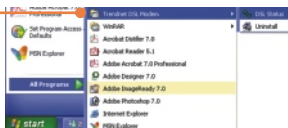
7. A message will be displayed requiring you to reboot the system. Select “Yes, reboot the computer now” and then click **Close**.



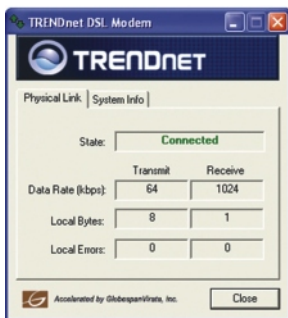
8. After rebooting, the device will be installed. Please click **Finish**.



9. From Programs, go to **TRENDnet DSL Modem** and click on the **DSL Status**.



10. The “Physical Link” tab of the “TRENDnet DSL Modem” window (Control Panel) allows you to review the current state of the TRENDnet DSL Modem and connection. The State field will indicate that the TDM-C400 is “Connected”.

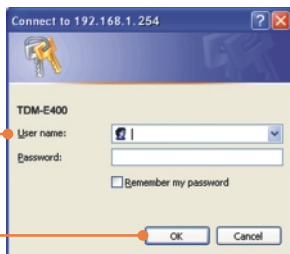


4. Configuring the ADSL Modem through Ethernet or USB connection

Note: The DHCP server of the ADSL2+ modem router is enabled by default. Please configure your computer to automatically obtain an IP address from the ADSL2+ modem router's DHCP Server.

1. Open your web browser, type **http://192.168.1.254** in the Address bar, and press **Enter**.

2. Enter User name and Password, and then click **OK**. By default, User name: **admin**
Password: **admin**



3. The **System View** page displays each time you login to the Web-Configuration. Click **Quick Configuration** to start configuration procedures.



4. The Quick Configuration table will appear requiring you to fill in the fields with the appropriate information provided by your Service Provider.

Quick Configuration

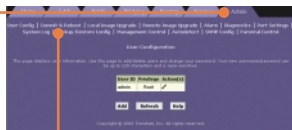
Use this page to quickly configure the system.

ATM Interface:	1
Operation Mode:	Enabled
Encapsulation:	PPPoE LLC
VPI:	0
VCI:	35
Bridge:	Disabled
IGMP:	Enabled
IP Address:	0 0 0 0
Subnet Mask:	0 0 0 0
Use DHCP:	<input type="radio"/> Enable <input checked="" type="radio"/> Disable
Default Router:	Disabled
Gateway IP Address:	0 0 0 0
PPP	
Username:	guest
Password:	*****
Use DNS:	<input type="radio"/> Enable <input checked="" type="radio"/> Disable
DNS	
Primary DNS Server:	0 0 0 0
Secondary DNS Server:	0 0 0 0

Submit Delete Cancel Help

5. Then click the Submit button.

6. Click **Admin** in the Web Configuration screen.

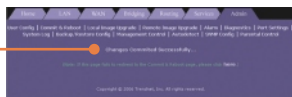


7. Click **Commit & Reboot**.

8. Click **Commit**.



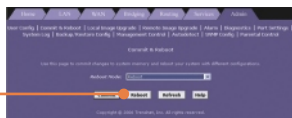
9. The browser will indicate that your changes have been committed successfully.



10. The **Reboot Mode** scroll by default is **Reboot** in the **Commit & Reboot** sub-session.



11. Click the Reboot button to reboot your ADSL2+ modem router.



12. Please wait 15 ~ 20 seconds for reboot to finish completely. Do not turn off the power or interrupt the rebooting of your ADSL2+ modem router.

Your installation is now complete.

For detailed information regarding the TDM-E400/TDM-C400 configuration and advanced settings, please refer to the Troubleshooting section, User's Guide CD-ROM, or TRENDnet's website at <http://www.trendnet.com>.

Q1: POWER LED does not illuminate after the product is turned on. What should I do?

A1: Verify that you are using the power cable provided with the device and that it is securely connected to the ADSL2+ modem and a wall socket/power strip.

Q2: I am not sure what type of Internet broadband connection I have for my DSL connection. How do I find out?

A2: You can contact your Internet Service Provider's (ISP) Customer Service or Technical Support Department for the correct information.

Q3: I specified the IP address 192.168.1.254 in my Web browser, but an error messages says, "The page cannot be displayed. How can I get into the TDM-E400 / TDM-C400 web configuration page?

A3: Please check your hardware and TCP/IP settings again by following the instructions in the QIG. Make sure the Power, WAN and the LAN LEDs are on. Then try to access the configuration page using your Web Browser again.

Q4: INTERNET LED does not illuminate after phone cable is attached.

A4: Verify that a standard telephone cable (called an RJ 41 cable) like the one provided is securely connected to the ADSL port and your wall phone jack. Allow about 30 seconds for the device to negotiate a connection with your ISP.

Verify that you are using a straight-through type Ethernet cable to the uplink port on a hub or a cross-over type cable to a stand-alone PC. If you connected the device to an ordinary hub port (not Uplink), you must use a straight-through cable. (To check: hold the connectors at each end of the cable side-by-side with the plastic spring facing down. Looking at the wires from left to right, if the first, second, third, and sixth wires are the same color on the two connectors, then it is a straight-through type. On a cross-over type, wire 1 on one connector should be the same color as wire 3 on the other. The same is true of wires 2 and 6.)

Q5: Ethernet LED does not illuminate after Ethernet cable is attached.

A5: Verify that the Ethernet cable is securely connected to your LAN hub or PC and to the ADSL2+ modem. Make sure the PC and/or hub is turned on.

Verify that your cable is sufficient for your network requirements. A 100 Mbps network (10BaseTx) should use cables labeled CAT 5. A 10Mbps network may tolerate lower quality cables.

Q6. My LAN PCs cannot display web pages on the Internet.

A6: Verify that the DNS server IP address specified on the PCs is correct for your ISP, as discussed in the item above. If you specified that the DNS server be assigned dynamically from a server, then verify with your ISP that the address configured on the ADSL2+ modem is correct, then you can use the ping utility, described on page 174 of the user guide, to test connectivity with your ISP's DNS server.

Q7. My PC cannot access the Internet.

A7: Use the ping utility, described on page 174 of the UG, check whether your PC can communicate with the ADSL2+ Modem Router's LAN IP address (by default 192.168.1.254). If it cannot, check the Ethernet cabling.

If you statically assigned a private IP address to the computer, (not a registered public address), verify the following:

1. Check that the gateway IP address on the computer is your public IP address. If it is not, correct the address or configure the PC to receive IP information automatically.
2. Verify with your ISP that the DNS server specified for the PC is valid. Correct the address or configure the PC to receive this information automatically.
3. Verify that a Network Address Translation rule has been defined on the ADSL2+ Ethernet Router to translate the private address to your public IP address. The assigned IP address must be within the range specified in the NAT rules (see User Guide, Chapter 4). Or, configure the PC to accept an address assigned by another device (see "Quick Start Part 2 Configuring Your Computers"). The default configuration includes a NAT rule for all dynamically assigned addresses within a predefined pool (see the instructions in Chapter 8 to view the address pool).

Q8: I forgot/lost my Web Configuration user ID or password.

A8: If you have not changed the password from the default, try using "admin" as both the user ID and password. Otherwise, you can reset the device to the default configuration by pressing the Reset button on the back panel of the device three times (using a pointed object such as a pen tip). Then, type the default User ID and password shown above. **WARNING:** Resetting the device removes any custom settings and returns all settings to their default values.

Q9. My changes to Web Configuration are not being retained.

A9. Be sure to use the Commit function after any changes. This function is described on page 47 of the User Guide.

Certifications

This equipment has been tested and found to comply with FCC and CE Rules.

Operation is subject to the following two conditions:

- (1) This device may not cause harmful interference.
- (2) This device must accept any interference received. Including interference that may cause undesired operation.



Waste electrical and electronic products must not be disposed of with household waste. Please recycle where facilities exist. Check with you Local Authority or Retailer for recycling advice.



NOTE: THE MANUFACTURER IS NOT RESPONSIBLE FOR ANY RADIO OR TV INTERFERENCE CAUSED BY UNAUTHORIZED MODIFICATIONS TO THIS EQUIPMENT. SUCH MODIFICATIONS COULD VOID THE USER'S AUTHORITY TO OPERATE THE EQUIPMENT.

ADVERTENCIA

En todos nuestros equipos se mencionan claramente las características del adaptador de alimentación necesario para su funcionamiento. El uso de un adaptador distinto al mencionado puede producir daños físicos y/o daños al equipo conectado. El adaptador de alimentación debe operar con voltaje y frecuencia de la energía eléctrica domiciliar existente en el país o zona de instalación.



TRENDnet Technical Support

US • Canada

Toll Free Telephone: 1(866) 845-3673

24/7 Tech Support



Europe (Germany • France • Italy • Spain • Switzerland • UK)

Toll Free Telephone: +00800 60 76 76 67

English/Espanol - 24/7

Francais/Deutsch - 11 am-8pm, Monday - Friday MET

Worldwide

Telephone: +(31) (0) 20 504 05 35

English/Espanol - 24/7

Francais/Deutsch - 11 am-8pm, Monday - Friday MET

Product Warranty Registration

Please take a moment to register your product online.

Go to TRENDnet's website at <http://www.trendnet.com>

TRENDnet[®]
20675 Manhattan Place
Torrance, CA 90501
USA