

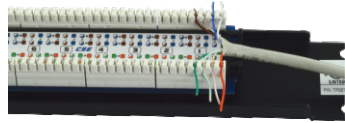
Unshielded Patch Panel

Instructions

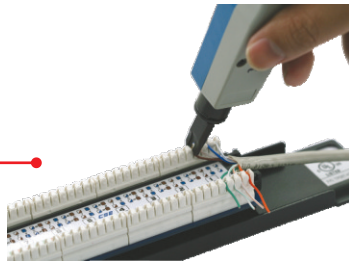
1. Strip approximately 30mm from a patch cable and separate the wires.



2. Layout the wires onto the patch panel based on the IDC color code. The IDC color codes can be found on the patch panel. (Reference the color codes labeled A for T568A. Reference the color codes labeled B for T568B.)



3. Use a punchdown tool (e.g. TC-PDT) to terminate the wires. Make sure that the cutting blade is positioned on the outside of the patch panel.



4. Repeat steps 1-3 for each port.

Specifications

Hardware	
Wiring Standards	T568A & T568B
Insertion Force	900gm
Retention Strength	7.7kg
Cabling	Cat.5e / Cat.6
Dimension (L x W x H)	254 x 44 x 30mm (10 x 1.7 x 1.2in.)
Weight	TC-P08C5E / TC-P08C6: 205g (7.2 oz) TC-P12C5E / TC-P12C6: 230g (8 oz)
Temperature	-10° ~ 60°C (14°F ~ 140°F)
Certifications	CE, FCC

Note: The patch panels carry a 2-year warranty. Go to www.trendnet.com/support and click on the Product Warranty Policy to view the TRENDnet warranty policy.