

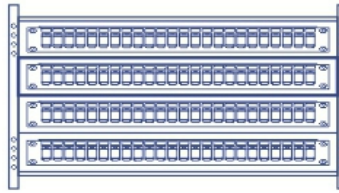
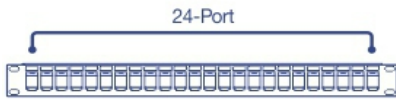


## 24-Port Blank Keystone 1U Patch Panel

TC-KP24 (v1.0R)

- 24-port blank keystone patch panel
- 1U 19" rackmount ready
- Use with TC-K25C6 and TC-K50C6 Cat6 keystone jacks (sold separately)

TRENDnet's 24-Port Blank Keystone 1U Patch Panel, model TC-KP24, is designed for use with TRENDnet's Cat6 keystone jacks (TC-K25C6 and TC-K50C6). When used together, they create a patch panel solution suitable for gigabit and 10G Copper Ethernet network applications.



## 24-Port

24-Port blank keystone 1U patch panel is designed for use with TRENDnet's Cat6 keystone jacks (sold separately).

## Hardware Design

19" 1U sturdy metal rackmount hardware design.

## Connectivity

Perfect for high-speed gigabit and 10G Copper Ethernet network applications when used with TRENDnet's Cat6 keystone jacks (sold separately).

## Specifications

<b>Features</b>	<ul style="list-style-type: none"> <li>• 24-port blank keystone patch panel</li> <li>• 1U 19" rackmount ready</li> <li>• Pre-numbered ports with supplementary labels</li> <li>• Use with TC-K25C6 and TC-K50C6 Cat6 keystone jacks (sold separately)</li> </ul>
<b>Materials</b>	<ul style="list-style-type: none"> <li>• SPCC steel construction</li> <li>• ABS plastics</li> </ul>
<b>Dimensions</b>	• 483 x 45 x 10mm (19 x 1.77 x 0.4 in.)

<b>Weight</b>	• 260g (9.17 oz.)
<b>Warranty</b>	• 2 year

### PACKAGE CONTENTS

- TC-KP24
- Quick Installation Guide

All references to speed are for comparison purposes only. Product specifications, size, and shape are subject to change without notice, and actual product appearance may differ from that depicted herein.