



**TRENDNET**®



## Quick Installation Guide



**TBW-103UB**

# Table of Contents

Español .....	1
1. Antes de iniciar .....	1
2. Cómo se instala .....	2
3. Cómo usar el adaptador inalámbrico .....	7
4. Cómo usar el adaptador Bluetooth .....	8
Troubleshooting .....	9

# 1. Preparación para la instalación



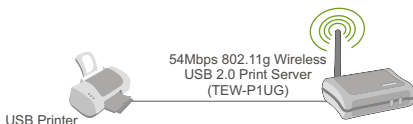
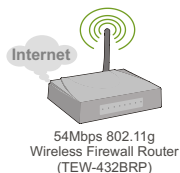
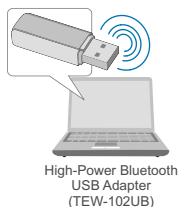
## Contenidos del paquete

- TBW-103UB
- CD-ROM de la herramienta
- Guía de instalación rápida
- Cable USB

## Requisitos del sistema

1. Para Windows 2000 o XP instalado
2. Un puerto USB 1.1 disponible
3. Una unidad de CD-ROM

## 802.11g Wireless & Bluetooth Combo USB 2.0 Adapter (TBW-103UB)



— bluetooth — wireless

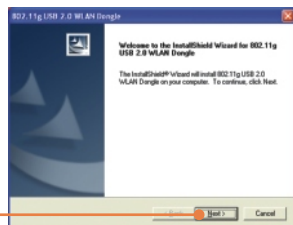
## 2. Cómo se instala

**Nota:** No conecte el adaptador inalámbrico USB a su PC hasta que haya instalado esta herramienta

1. Introduzca el CD de instalación en su unidad de CD-ROM y haga clic en **802.11g WLAN Setup Driver** (Controlador de configuración para WLAN 802.11g).

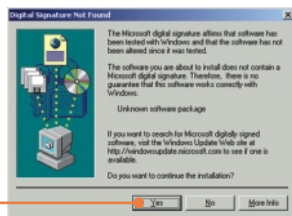
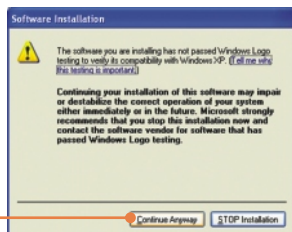


2. Luego, haga clic en **Next** (Siguiente) hasta que pueda ver la siguiente ventana.

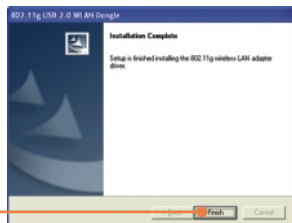


**Nota:** Los Adaptadores Inalámbricos de TRENDnet han sido examinados en su totalidad para su compatibilidad con los Sistemas Operativos de Windows y han sido aprobados para su funcionalidad.

3. Haga clic en **Continue Anyway** (Continuar de todas formas) o en **Yes (Sí)**.



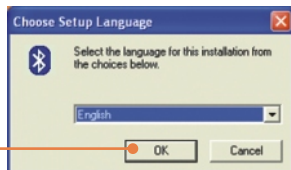
4. Haga clic en **Finish (Finalizar)**.



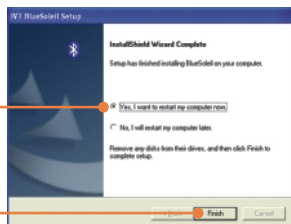
5. Vuelva a la herramienta del software y haga clic en **Class 2 Bluetooth Setup Driver** (Controlador de configuración para Bluetooth Class 2)



6. Haga clic en **OK**.



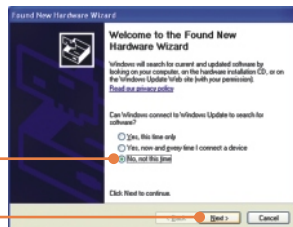
7. Haga clic en **Next** (Siguiente) para cada paso de instalación, y seleccione **Yes, I want to restart my computer now** (Sí, deseo reiniciar mi PC ahora). Haga clic en **Finish** (Finalizar).



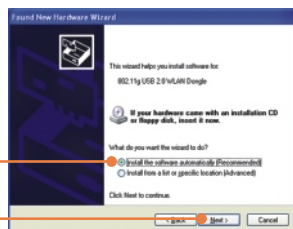
8. Conecte el adaptador USB inalámbrico TBW-103UB al puerto USB de su PC.



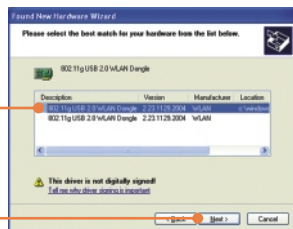
9. Seleccione **No, not this time** (No, más tarde), y después haga clic en **Next** (Siguiete)



10. Seleccione **Install the software automatically** (Instalar el software automáticamente). Haga clic en **Next** (Siguiete).

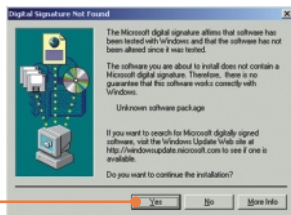
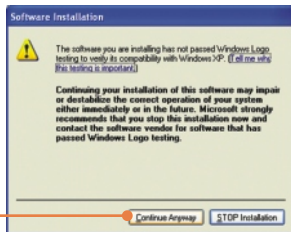


11. Haga clic en **Next** (Siguiete).

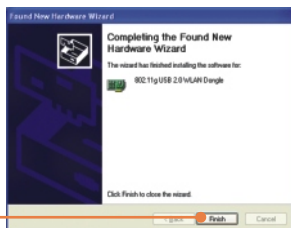


**Nota:** Los Adaptadores Inalámbricos de TRENDnet han sido examinados en su totalidad para su compatibilidad con los Sistemas Operativos de Windows y han sido aprobados para su funcionalidad.

12. Haga clic en **Continue Anyway** (Continuar de todas formas) o en **Yes (Sí)**.



13. Haga clic en **Finish (Finalizar)**.



14. Tras finalizar la instalación del software **Restart** (Reinicie) su PC.



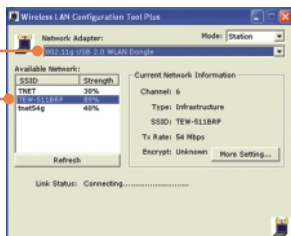


# 3. Cómo usar el adaptador inalámbrico

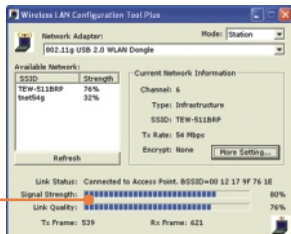
1. Haga doble clic en el icono inalámbrico del PC en la bandeja del sistema .



2. Seleccione **802.11g USB 2.0 WLAN Dongle** (Dongle WLAN USB 2.0 802.11g) en el menú desplegable del **Network Adapter** (Adaptador de red). Haga doble clic en el **SSID** al que desee conectarse dentro de la ventana de **Available Network** (Red disponible).



3. Compruebe el estatus de su conexión.



## 4. Cómo usar el adaptador Bluetooth

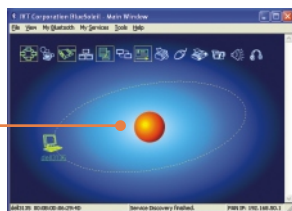
1. Haga doble clic en el icono Bluetooth ubicado en la esquina derecha inferior.



2. Haga clic en la bola naranja para buscar los dispositivos Bluetooth.



3. Haga doble clic en el dispositivo habilitado para Bluetooth. Todos los servicios Bluetooth están resaltados en amarillo para su conveniencia. Haga doble clic en el servicio Bluetooth que desea habilitar.



### La instalación ha sido completada

**Nota:** Para más detalles sobre las características avanzadas, por favor consulte la Guía del Usuario.

**Q1: If the Device Status indicates that the Bluetooth USB Adapter is not working properly, what should I do?**

**A1:** Uninstall the Bluetooth USB Adapter, and reinstall the Bluetooth utility.

**Q2: How do I set up connections between Bluetooth devices?**

**A2:** Refer to the User's Guide on the included CD-ROM or to TRENDnet's website for additional information.

**Q3: How do I transfer files between my PC and my Cell Phone?**

**A3:** You need to verify that your Cell Phone is "Bluetooth enhanced" and that the software for your phone allows file-transfers. If this is the case, refer to the User's Guide on the included CD-ROM or to TRENDnet's website for additional information.

**Q4: What folder do I use to share files between Bluetooth devices?**

**A4:** Double-click **My Documents**, double-click **Bluetooth**, and double-click **share**. All files located in the **share** folder can be transferred to other Bluetooth enabled devices.

**Q5: I clicked the orange ball in the Bluetooth utility, but I still could not locate a Bluetooth device.**

**A5:** Make sure that your Bluetooth devices are enabled, and that the TBW-103UB is connected to your computer. Then reboot all Bluetooth enabled devices and click the orange ball in the Bluetooth utility.

**Q6: I cannot pair two Bluetooth enabled computers after typing a password. What do I do?**

**A6:** Try using a simpler password with 3 characters such as 123, and see if you are able to connect to another Bluetooth enabled computer.

**Q7: I completed all the steps in the quick installation guide, but my wireless USB Adapter isn't connecting to my access point. What should I do?**

**A7:** First, you should verify that the Network SSID matches your wireless router or access point's SSID. Second, you should check your TCP/IP properties to ensure that Obtain an IP address automatically is selected. Third, you can click on the Site Survey link to check and see if there are any available wireless networks listed.

**Q8: Windows is unable to recognize my hardware. What should I do?**

**A8:** Make sure your computer meets the minimum requirements as specified in Section 1 of this quick installation guide. Also, you must install the wireless configuration utility (as described in Section 3) before connecting the wireless USB Adapter.

**Q9: I cannot open the wireless configuration utility. What should I do?**

**A9:** Go to your device manager (control panel system) to make sure the adapter is installed properly. If you see a networking device with a yellow question mark or exclamation point, you will need to reinstall the device and/or the drivers.

If you still encounter problems, please refer to the User's Guide CD-ROM or contact technical support.

## Certifications

This equipment has been tested and found to comply with FCC and CE Rules.

Operation is subject to the following two conditions:

- (1) This device may not cause harmful interference.
- (2) This device must accept any interference received. Including interference that may cause undesired operation.



Waste electrical and electronic products must not be disposed of with household waste. Please recycle where facilities exist. Check with you Local Authority or Retailer for recycling advice.



**NOTE:** THE MANUFACTURER IS NOT RESPONSIBLE FOR ANY RADIO OR TV INTERFERENCE CAUSED BY UNAUTHORIZED MODIFICATIONS TO THIS EQUIPMENT. SUCH MODIFICATIONS COULD VOID THE USER'S AUTHORITY TO OPERATE THE EQUIPMENT.

## ADVERTENCIA

En todos nuestros equipos se mencionan claramente las características del adaptador de alimentación necesario para su funcionamiento. El uso de un adaptador distinto al mencionado puede producir daños físicos y/o daños al equipo conectado. El adaptador de alimentación debe operar con voltaje y frecuencia de la energía eléctrica domiciliar existente en el país o zona de instalación.



# TRENDnet<sup>®</sup>

## TRENDnet Technical Support

**US • Canada**

**Toll Free Telephone:** 1(866) 845-3673

24/7 Tech Support



**Europe** (Germany • France • Italy • Spain • Switzerland • UK)

**Toll Free Telephone:** +00800 60 76 76 67

English/Espanol - 24/7

Francais/Deutsch - 11am-8pm, Monday - Friday MET

**Worldwide**

**Telephone:** +[31] (0) 20 504 05 35

English/Espanol - 24/7

Francais/Deutsch - 11am-8pm, Monday - Friday MET

## Product Warranty Registration

Please take a moment to register your product online.

Go to TRENDnet's website at <http://www.trendnet.com>

# TRENDnet<sup>®</sup>

20675 Manhattan Place  
Torrance, CA 90501  
USA