



## Quick Installation Guide




**TBW-103UB**

# Table of Contents

English .....	1
1. Before You Start .....	1
2. How to Install .....	2
3. Using the Wireless Adapter .....	7
4. Using the Bluetooth Adapter .....	8
Troubleshooting .....	9

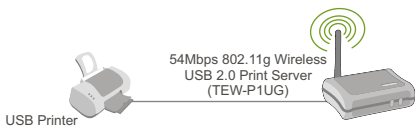
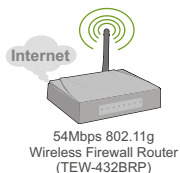
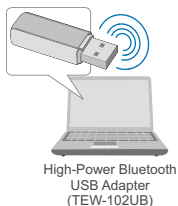
# 1. Before You Start

	Package Content
	<ul style="list-style-type: none"><li>• TBW-103UB</li><li>• Utility CD-ROM</li><li>• Quick Installation Guide</li><li>• USB Cable</li></ul>

## System Requirements

1. Windows 2000 or XP installed
2. One USB 1.1 port available
3. A CD-ROM Drive

## 802.11g Wireless & Bluetooth Combo USB 2.0 Adapter (TBW-103UB)



— bluetooth — wireless

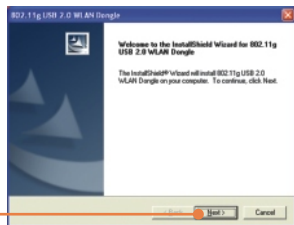
## 2. How to Install

**Note:** Do not connect the Wireless USB Adapter to your computer until you have finished installing the Utility and Driver.

1. Insert the installation CD into your CD-ROM drive and click **802.11g WLAN Setup Driver**.

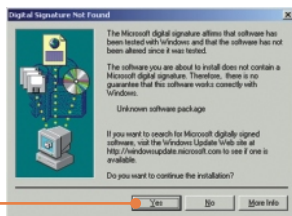
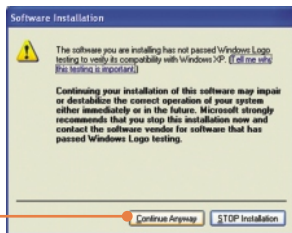


2. Continue to click **Next** until you see the window below.

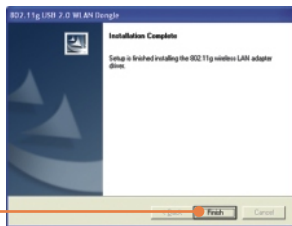


**Note:** TRENDnet's Wireless Adapters have been fully tested under all supported Windows Operating Systems and have been approved for their functionality.

3. Click **Continue Anyway** or Click **Yes**.



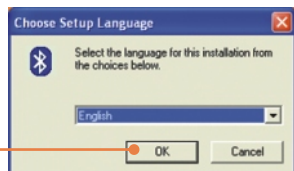
4. Click **Finish**.



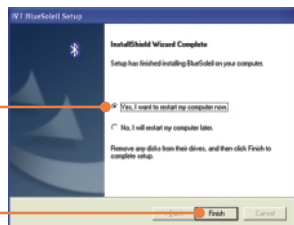
5. Return to the software utility and click **Class 2 Bluetooth Setup Driver**.



6. Click **OK**.



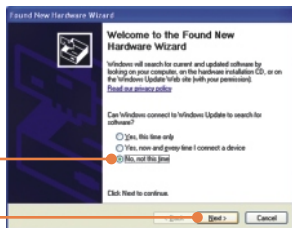
7. Click **Next** for each installation step, and select **Yes, I want to restart my computer now**. Click **Finish**.



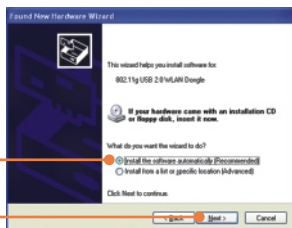
8. Connect the TBW-103UB into your computer's USB port.



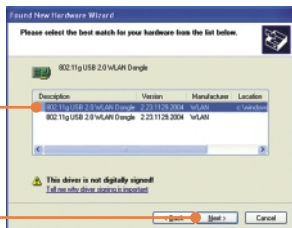
9. Select **No, not this time**, and click **Next**.



10. Select **Install the software automatically**. Click **Next**.

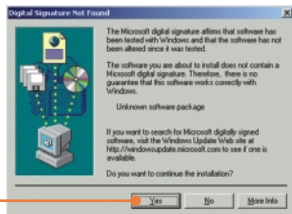
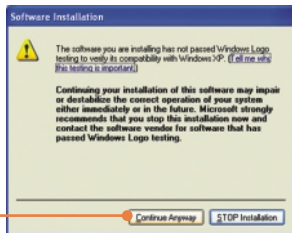


11. Click **Next**.

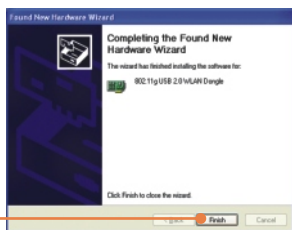


**Note:** TRENDnet's Wireless Adapters have been fully tested under all supported Windows Operating Systems and have been approved for their functionality.

12. Click **Continue Anyway** or Click **Yes**.



13. Click **Finish**.



14. After finalizing your software installation, **Restart** your computer.



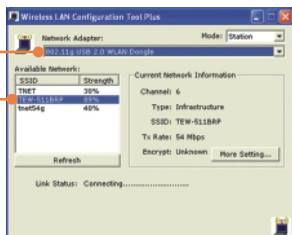


## 3. Using the Wireless Adapter

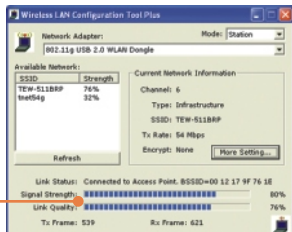
1. Double-click the wireless icon on your system tray.



2. Select **802.11g USB 2.0 WLAN Dongle** from the **Network Adapter** drop down menu. Next double-click the **SSID** you wish to connect to within the **Available Network** window.



3. Please verify your connection status.

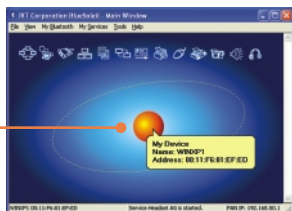


## 4. Using the Bluetooth Adapter

1. Double-click the bluetooth icon on your system tray.



2. Click the orange ball to search for Bluetooth devices.



3. Double-click the Bluetooth enabled device. All available Bluetooth services are highlighted in yellow for your convenience. Double-click the Bluetooth service you want to enable.



**Your installation is now complete.**

**Note:** For more detail on advanced features, please consult the User's Guide.

**Q1: If the Device Status indicates that the Bluetooth USB Adapter is not working properly, what should I do?**

**A1:** Uninstall the Bluetooth USB Adapter, and reinstall the Bluetooth utility.

**Q2: How do I set up connections between Bluetooth devices?**

**A2:** Refer to the User's Guide on the included CD-ROM or to TRENDnet's website for additional information.

**Q3: How do I transfer files between my PC and my Cell Phone?**

**A3:** You need to verify that your Cell Phone is "Bluetooth enhanced" and that the software for your phone allows file-transfers. If this is the case, refer to the User's Guide on the included CD-ROM or to TRENDnet's website for additional information.

**Q4: What folder do I use to share files between Bluetooth devices?**

**A4:** Double-click **My Documents**, double-click **Bluetooth**, and double-click **share**. All files located in the **share** folder can be transferred to other Bluetooth enabled devices.

**Q5: I clicked the orange ball in the Bluetooth utility, but I still could not locate a Bluetooth device.**

**A5:** Make sure that your Bluetooth devices are enabled, and that the TBW-103UB is connected to your computer. Then reboot all Bluetooth enabled devices and click the orange ball in the Bluetooth utility.

**Q6: I cannot pair two Bluetooth enabled computers after typing a password. What do I do?**

**A6:** Try using a simpler password with 3 characters such as 123, and see if you are able to connect to another Bluetooth enabled computer.

**Q7: I completed all the steps in the quick installation guide, but my wireless USB Adapter isn't connecting to my access point. What should I do?**

**A7:** First, you should verify that the Network SSID matches your wireless router or access point's SSID. Second, you should check your TCP/IP properties to ensure that Obtain an IP address automatically is selected. Third, you can click on the Site Survey link to check and see if there are any available wireless networks listed.

**Q8: Windows is unable to recognize my hardware. What should I do?**

**A8:** Make sure your computer meets the minimum requirements as specified in Section 1 of this quick installation guide. Also, you must install the wireless configuration utility (as described in Section 3) before connecting the wireless USB Adapter.

**Q9: I cannot open the wireless configuration utility. What should I do?**

**A9:** Go to your device manager (control panel system) to make sure the adapter is installed properly. If you see a networking device with a yellow question mark or exclamation point, you will need to reinstall the device and/or the drivers.

If you still encounter problems, please refer to the User's Guide CD-ROM or contact technical support.

## Certifications

This equipment has been tested and found to comply with FCC and CE Rules.

Operation is subject to the following two conditions:

- (1) This device may not cause harmful interference.
- (2) This device must accept any interference received. Including interference that may cause undesired operation.



Waste electrical and electronic products must not be disposed of with household waste. Please recycle where facilities exist. Check with you Local Authority or Retailer for recycling advice.



**NOTE:** THE MANUFACTURER IS NOT RESPONSIBLE FOR ANY RADIO OR TV INTERFERENCE CAUSED BY UNAUTHORIZED MODIFICATIONS TO THIS EQUIPMENT. SUCH MODIFICATIONS COULD VOID THE USER'S AUTHORITY TO OPERATE THE EQUIPMENT.

## ADVERTENCIA

En todos nuestros equipos se mencionan claramente las características del adaptador de alimentación necesario para su funcionamiento. El uso de un adaptador distinto al mencionado puede producir daños físicos y/o daños al equipo conectado. El adaptador de alimentación debe operar con voltaje y frecuencia de la energía eléctrica domiciliar existente en el país o zona de instalación.



## TRENDnet Technical Support

### US • Canada

**Toll Free Telephone:** 1(866) 845-3673

24/7 Tech Support



### Europe (Germany • France • Italy • Spain • Switzerland • UK)

**Toll Free Telephone:** +00800 60 76 76 67

English/Espanol - 24/7

Francais/Deutsch - 11am-8pm, Monday - Friday MET

### Worldwide

**Telephone:** +(31) (0) 20 504 05 35

English/Espanol - 24/7

Francais/Deutsch - 11am-8pm, Monday - Friday MET

## Product Warranty Registration

Please take a moment to register your product online.

Go to TRENDnet's website at <http://www.trendnet.com>

**TRENDnet**<sup>®</sup>  
20675 Manhattan Place  
Torrance, CA 90501  
USA