



# TRENDNET



## Quick Installation Guide

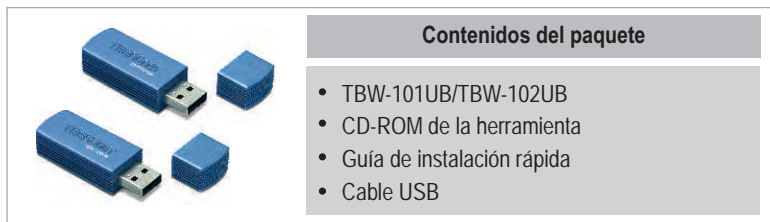


**TBW-101UB**  
**TBW-102UB**

# Table of Contents

|   |   |
|---|---|
| Español .....                             | 1 |
| 1. Antes de iniciar .....                 | 1 |
| 2. Cómo se instala .....                  | 2 |
| 3. Cómo usar el adaptador Bluetooth ..... | 4 |
| Troubleshooting .....                     | 5 |

# 1. Preparación para la instalación



## Requisitos del sistema

1. Para Windows 98SE, ME, 2000 o XP instalado
2. Un puerto USB 1.1 disponible
3. Una unidad de CD-ROM

### Notebook with Bluetooth USB Adapter (TBW-101UB/TBW-102UB)



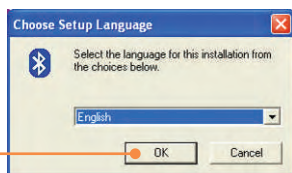
## 2. Cómo se instala

**Nota:** No conecte el adaptador inalámbrico USB a su PC hasta que haya instalado esta herramienta

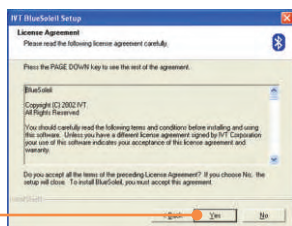
1. Inserte el CD-ROM de la herramienta en su unidad de CD-ROM.



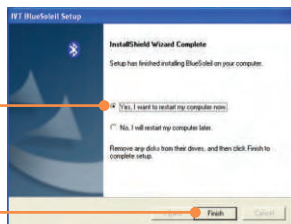
2. Seleccione el idioma para esta instalación y luego haga clic en **OK**.



3. Haga clic en **Next** (Siguiente) y haga clic en **Yes** (Si).



4. Haga clic en **Next** (Siguiente) y seleccione **Yes, I want to restart my computer.** (Sí, quiero reiniciar mi PC). Haga clic en **Finish** (Finalizar).



5. Inserte el adaptador USB en el puerto USB.

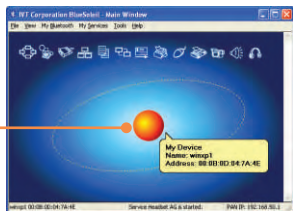


## 3. Cómo usar el adaptador Bluetooth

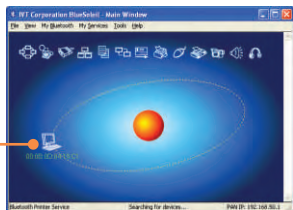
1. Haga doble clic en el icono Bluetooth ubicado en la esquina derecha inferior.



2. Haga clic en la bola naranja para buscar los dispositivos Bluetooth.



3. Haga doble clic en el dispositivo habilitado para Bluetooth. Todos los servicios Bluetooth están resaltados en amarillo para su conveniencia. Haga doble clic en el servicio Bluetooth que desea habilitar.



### La instalación ha sido completada

**Nota:** Para más detalles sobre las características avanzadas, por favor consulte la Guía del Usuario.

**Q1: If the Device Status indicates that the Bluetooth USB Adapter is not working properly, what should I do?**

**A1:** Uninstall **Air2U Bluetooth Device** in **Device Manager**, and reinstall the Bluetooth utility.

**Q2: How do I set up connections between Bluetooth devices?**

**A2:** Refer to the User's Guide on the included CD-ROM or to TRENDnet's website for additional information.

**Q3: How do I transfer files between my PC and my Cell Phone?**

**A3:** You need to verify that your Cell Phone is "Bluetooth enhanced" and that the software for your phone allows file-transfers. If this is the case, refer to the User's Guide on the included CD-ROM or to TRENDnet's website for additional information.

**Q4: What folder do I use to share files between Bluetooth devices?**

**A4:** Double-click **My Documents**, double-click **Bluetooth**, and double-click **share**. All files located in the **share** folder can be transferred to other Bluetooth enabled devices.

**Q5: I clicked the orange globe in the Bluetooth utility, but I still could not locate a Bluetooth device.**

**A5:** Make sure that your Bluetooth devices are enabled, and that the TBW-101UB/TBW-102UB is connected to your computer. Then reboot all Bluetooth enabled devices and click the orange globe in the Bluetooth utility.

**Q6: I cannot pair two Bluetooth enabled computers after typing a password. What do I do?**

**A6:** Try using a simpler password with 3 characters such as 123, and see if you are able to connect to another Bluetooth enabled computer.

If you still encounter problems, please refer to the User's Guide CD-ROM or contact technical support.

## Certifications

This equipment has been tested and found to comply with FCC and CE Rules. Operation is subject to the following two conditions:

- (1) This device may not cause harmful interference.
- (2) This device must accept any interference received.  
Including interference that may cause undesired operation.



Waste electrical and electronic products must not be disposed of with household waste. Please recycle where facilities exist. Check with you Local Authority or Retailer for recycling advice.



**NOTE:** THE MANUFACTURER IS NOT RESPONSIBLE FOR ANY RADIO OR TV INTERFERENCE CAUSED BY UNAUTHORIZED MODIFICATIONS TO THIS EQUIPMENT. SUCH MODIFICATIONS COULD VOID THE USER'S AUTHORITY TO OPERATE THE EQUIPMENT.



# TRENDnet

## TRENDnet Technical Support

### US/Canada Support Center

**Contact**

Telephone: 1(866) 845-3673

Email: [support@trendnet.com](mailto:support@trendnet.com)

**Tech Support Hours**

24/7 Toll Free Tech Support



### European Support Center

**Contact****Telephone:**

Deutsch : +49 (0) 6331 / 268-460

Français : +49 (0) 6331 / 268-461

0800-90-71-61 (numéro vert)

Español : +49 (0) 6331 / 268-462

English : +49 (0) 6331 / 268-463

Italiano : +49 (0) 6331 / 268-464

Dutch : +49 (0) 6331 / 268-465

Fax: +49 (0) 6331 / 268-466

**Tech Support Hours**

8:00am - 6:00pm

Middle European Time

Monday - Friday

## Product Warranty Registration

Please take a moment to register your product online.

Go to TRENDnet's website at <http://www.trendnet.com>

## TRENDnet

3135 Kashiwa Street

Torrance, CA 90505

USA