

TA-102S

TA-103S

Speakers
Quick Installation Guide

Guide d'installation rapide des
diffuseurs

Anleitung zur Schnellinstallation des
Lautsprechers

Guía de instalación rápida de
los altavoces

Version 11.15.04



TRENDnet[®]
TRENDware, USA
What's Next in Networking

Copyright ©2004. All Rights Reserved. TRENDware International, Inc.

Table of Contents

English	1
1. Prepare for Installation	1
2. Product Detail	2
3. Hardware Installation	3
4. Driver Installation	4
5. Verify Installation	7
Troubleshooting	13

English QIG

1. Prepare for Installation

Thank you for purchasing TRENDnet's TA-102S/TA-103S speakers.

This guide will help you to install and configure the TA-102S/TA-103S. Installation should be easy and trouble-free. If you experience any problems, please refer to the Troubleshooting section. If you need further technical assistance, please visit www.TRENDNET.com or contact technical support by phone.

Verify Package Contents

Please make sure you have everything in the box:



Minimum System Requirements

1. Pentium 266Mhz or faster processor with at least 32MB of RAM.
2. Available USB 1.1 or USB 2.0 port
3. Windows XP, 2000, ME, 98SE or Mac OS 9.0 or later

2. Product Detail

The TA-102S/TA-103S comes with an attached 53 cm cord and a USB type A connector.



3. Hardware Installation

1. Turn on your computer and wait for your Windows desktop to show.
2. Insert the speaker's USB connector into one of your available USB ports.
3. Make sure that the TA-102S/TA-103S connects firmly into your computer.



4. Driver Installation

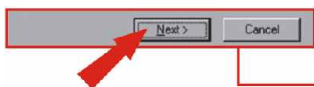
Windows XP/2000/Me/98SE

After inserting the TA-102S/TA-103S into one of your USB slots, the **Plug-and-Play** messages will appear.

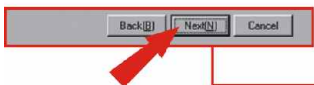
1. Click the cancel button on all Plug-and-Play messages displayed on the screen, and follow the procedure below.
2. Insert the TA-102S/TA-103S Driver CD-ROM into your computer's CD-ROM drive.
3. If you see the screen below, go to **step 6**. If you do not see this screen, go to **step 4**.



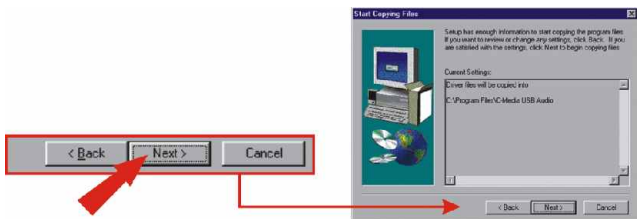
4. Double-click the “My Computer” icon on your Windows desktop.
5. Double-click the “CD ROM” drive.
6. Click **Next**.



7. Click **Next**.



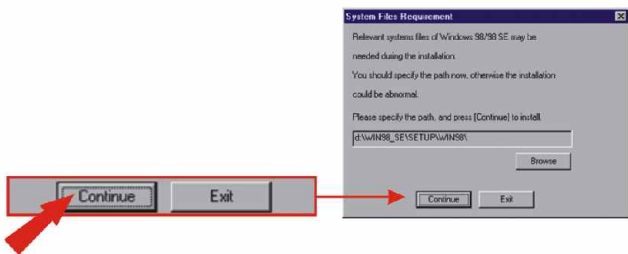
8. Click **Next**.



9. Allow Windows to install your drivers.



10. For Windows 98SE, please insert your Windows 98SE CD into your computer's CD-ROM drive and click **Continue**.
For Windows ME, please go to **step 11**.



11. Allow Windows to install your drivers.



12. Click **OK**.



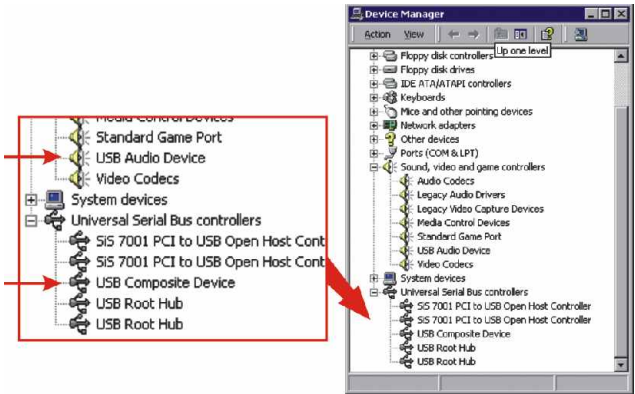
Congratulations!
Installation is now complete.

Note: If you would like to verify the TA-102S/TA-103S has been properly installed for your system, please go to the Verify Installation section.

5. Verify Installation

Windows XP

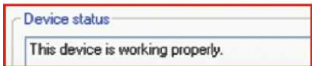
1. Click **Start**, and click **Control Panel**.
2. Double-click the **System** icon. On the **Hardware** tab, click the **Device Manager** button.
3. Expand the “Sound, Video, and game controllers” heading to verify that the **USB Audio Device** has been installed, and expand the “Universal Serial Bus Controllers” heading to verify that the **USB Composite Device** has been installed.



4. Double-click the **USB Audio Device** icon to open the Properties window.



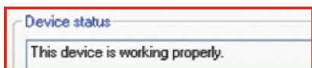
5. Verify that “this device is working properly.”



6. Double-click the **USB Composite Device** icon to open the Properties window.

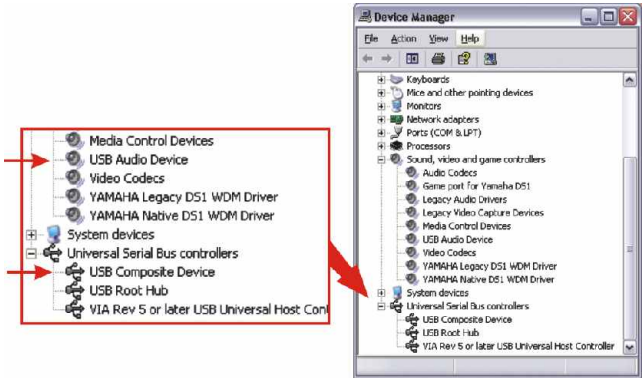


7. Verify that “this device is working properly.”



Windows 2000

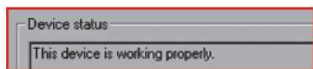
1. Click **Start**, highlight **Settings**, and Click **Control Panel**.
2. Double-click the **System** icon. On the **Hardware** tab, click the **Device Manager** button.
3. Expand the “Sound, Video, and game controllers” heading to verify that the **USB Audio Device** has been installed, and expand the “Universal Serial Bus Controllers” heading to verify that the **USB Composite Device** has been installed.



4. Double-click the **USB Audio Device** icon to open the Properties window.



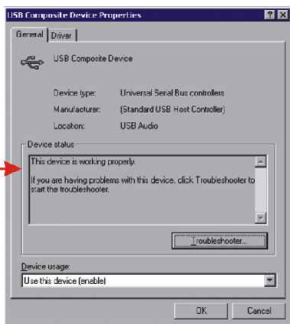
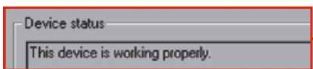
5. Verify that “this device is working properly.”



6. Double-click the **USB Composite Device** icon to open the Properties window.

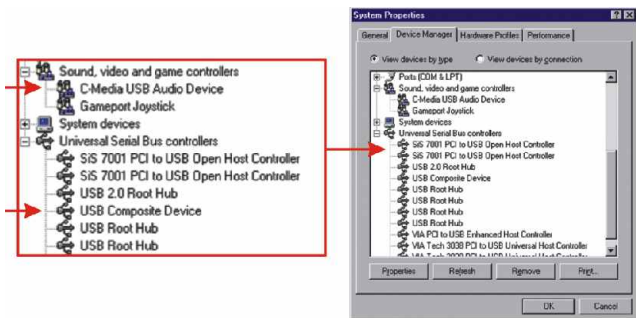


7. Verify that “this device is working properly.”



Windows ME/98SE

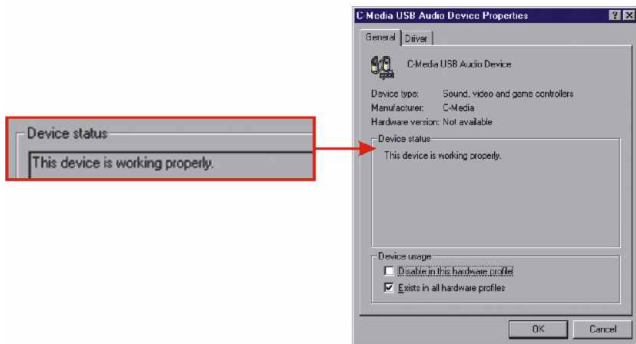
1. Click **Start**, highlight **Settings**, and Click **Control Panel**.
2. Double-click the **System** icon, and click **Device Manager** tab.
3. Expand the “Sound, Video, and game controllers” heading to verify that the **USB Audio Device** has been installed, and expand the “Universal Serial Bus Controllers” heading to verify that the **USB Composite Device** has been installed.



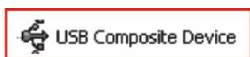
4. Double-click the **USB Audio Device** icon to open the Properties window.



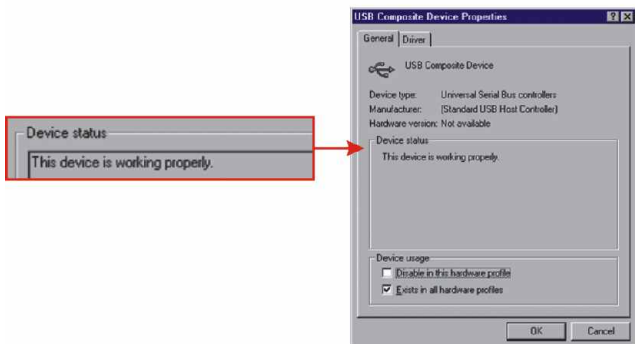
5. Verify that “this device is working properly.”



6. Double-click the **USB Composite Device** icon to open the Properties window.



7. Verify that **“this device is working properly.”**



Troubleshooting

Q1. Is there a driver diskette or CD for the TA-102S/103S?

A1. Yes, the TA-102S/TA-103S comes with a CD. However, you do not need to use this CD with Windows XP or Windows 200. You will need to use the CD with Windows Me or Windows 98.

Q2. Can I connect or disconnect the TA-102S/TA-103S while the computer is on?

A2. Yes, you can connect or disconnect your speaker while the computer is on because the TA-102S/TA-103S interface is Plug-and-Play compliant and hot-pluggable.

Q3. After following the instructions for installing the TA-102S/TA-103S and verifying that my speakers are installed correctly, I still can't hear anything. Did I do anything wrong?

A3. If you followed the directions correctly and have verified that your devices are working properly, you should be able to hear sound from your speakers. Please go to the Accessories folder, then to the Entertainment folder, and then click on the Volume Control icon. Check to see if the Mute box is checked off, and adjust your volume to a higher level.

If you have any questions regarding the TA102S/103S speaker, please contact Trendware Technical Support Department.

Contact Technical Support

Telephone: +1-310-626-6252
Fax: +1-310-626-6267
Website: www.TRENDNET.com
E-mail: support@trendware.com

Technical Support Hours

7:00AM ~ 6:00PM, Monday through Friday
Pacific Standard Time (except holidays)

Certifications

This equipment has been tested and found to comply with FCC and CE Rules. Operation is subject to the following two conditions:

- (1) This device may not cause harmful interference.
- (2) This device must accept any interference received.
Including interference that may cause undesired operation.





Product Warranty Registration

Please take a moment to register your product online.
Go to TRENDware's website at <http://www.TRENDNET.com>

TRENDware International, Inc.
3135 Kashiwa Street
Torrance, CA 90505

<http://www.TRENDNET.com>

Copyright ©2004. All Rights Reserved. TRENDware International, Inc.