

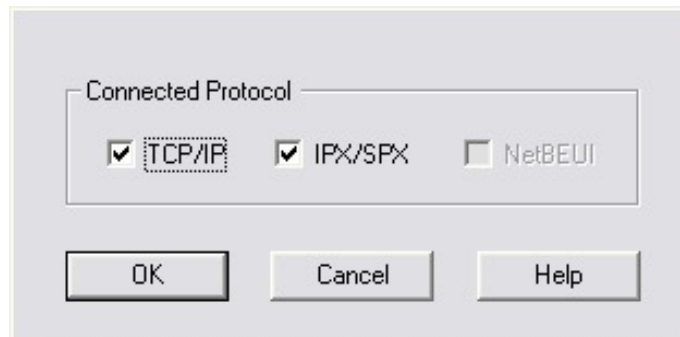
# TE100-P1P/TE100-P1U F.A.Q.

## Q: Why doesn't BiAdmin detect my print server?

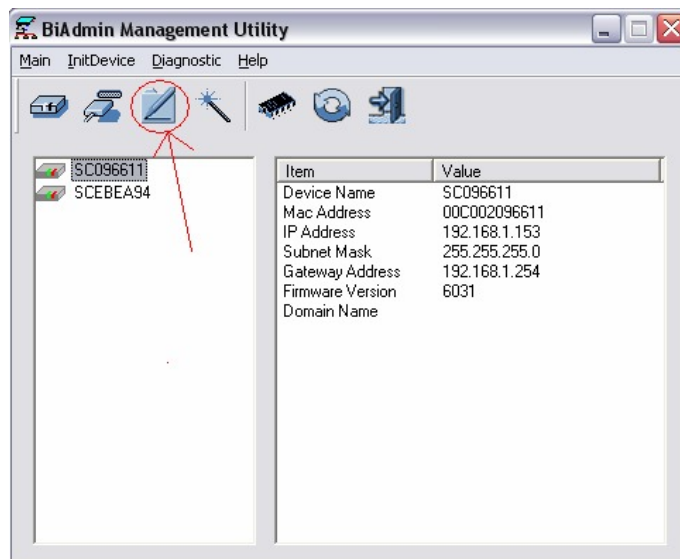
**A:** If you are using Windows XP you will have to disable the built in firewall. But for all operating systems you have to disable any other form of firewall software such as Norton Internet Security, Black Ice, and Zone Alarm.

## Q: How do I change the IP address of my print server?

**A: Step 1.** Open up the BiAdmin utility click on connect protocols.

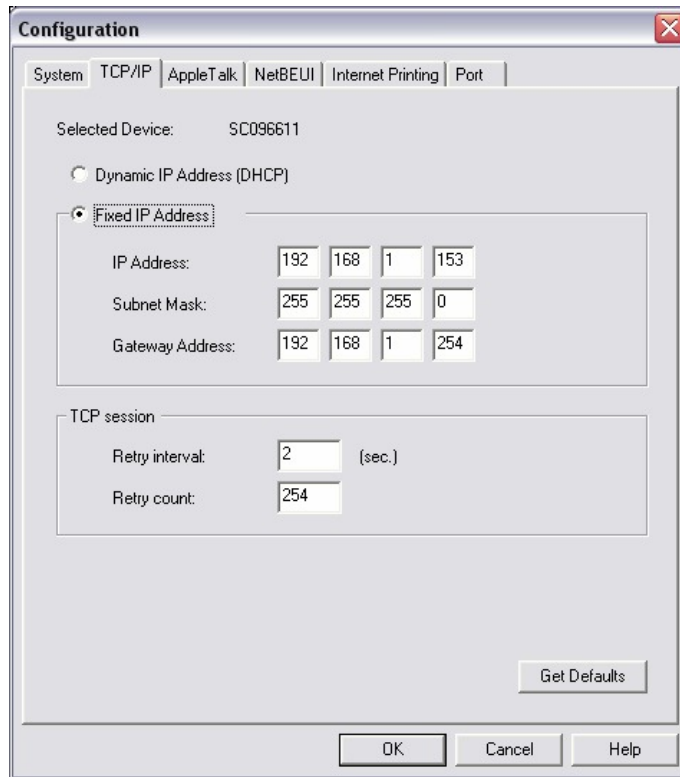


**Step 2.** Highlight your Print server and click on Configuration.



# TE100-P1P/TE100-P1U F.A.Q.

**Step 3.** Then click on TCP/IP



## Q: How do I install my printer on Windows 95/98/ME?

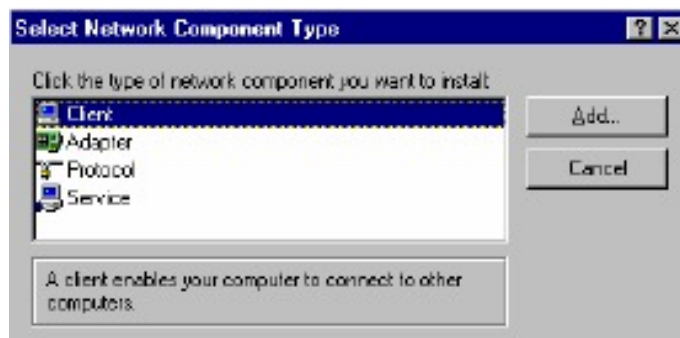
**A:** In Windows 98/Me you will need to install the LPR client.

For Windows 98/ME you will also need to know the port name that you are printing to (For the Te100-P1P/U the port name is L1.)

### Installing LPR:

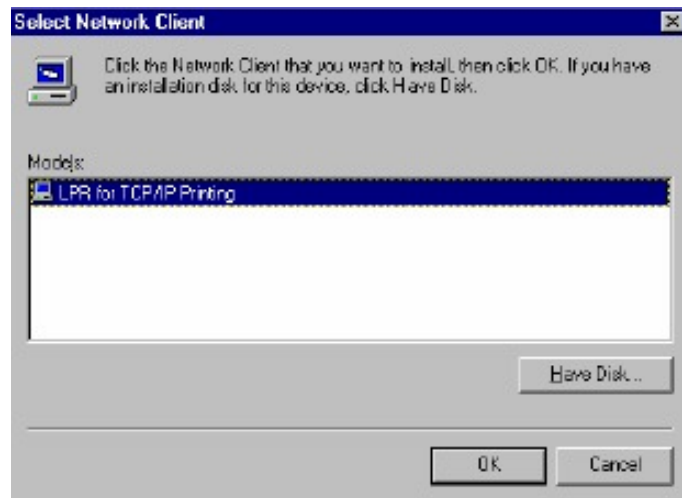
**Step 1.** Once the file is downloaded and extracted, Go to **Start > Settings > Control Panel >** double-click on **Networks**. Click on **Add**

**Step 2.** Highlight **Client** and click on **Add**.



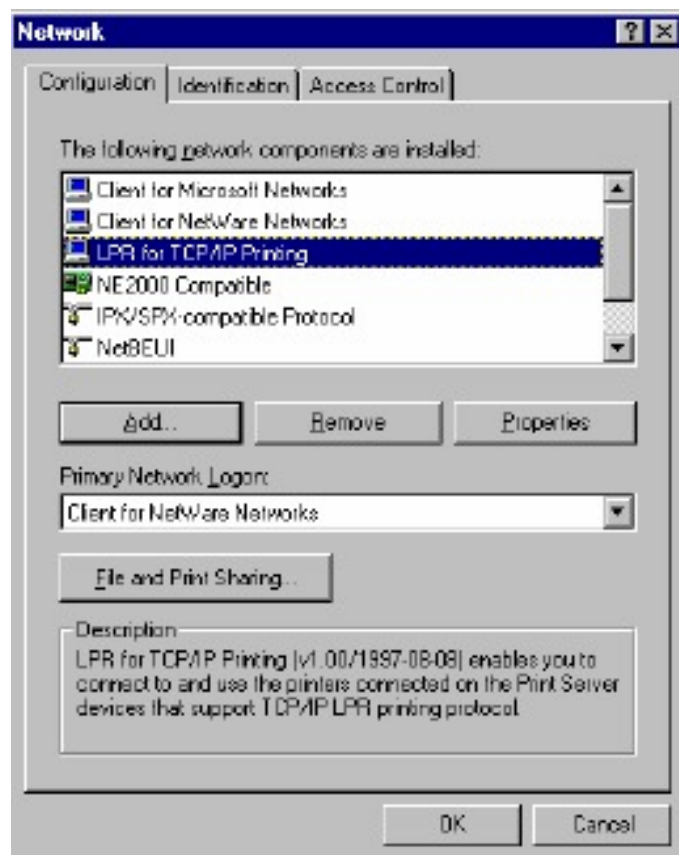
# TE100-P1P/TE100-P1U F.A.Q.

**Step 3.** Click on **Have Disk > Browse**. Browse to the location of the extracted LPR Client.



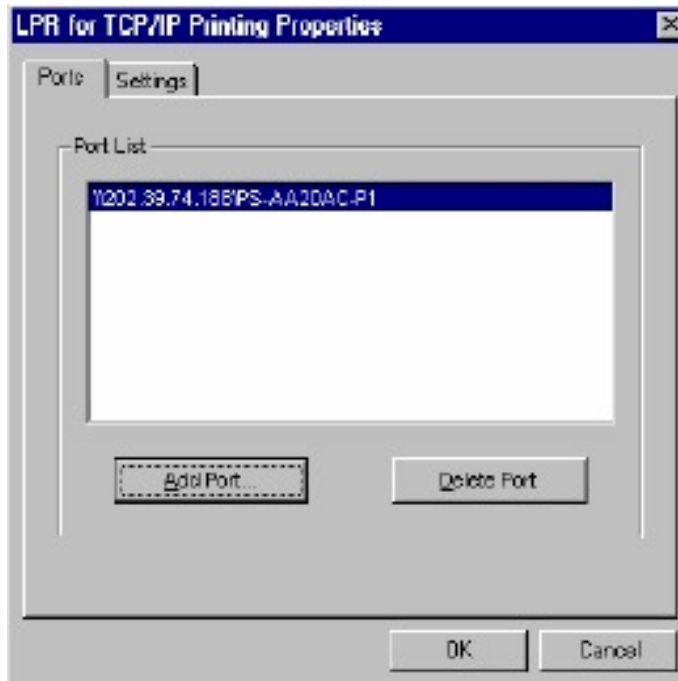
**Step 4.** Click **OK** 3 times.

**Step 5.** From the list highlight **LPR For TCP/IP** and click on **Properties**.

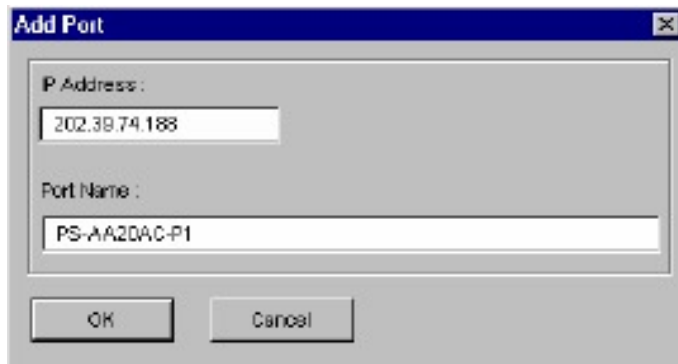


# TE100-P1P/TE100-P1U F.A.Q.

**Step 6.** Click on **Add Port.**



In the top field type in the IP address of your print server. In the bottom field type in the port name of your print server, For the Te100-P1P/U the port name is L1. Click on **OK**



# TE100-P1P/TE100-P1U F.A.Q.

**Step 7.** Click on **OK**. Windows will ask you to restart. Click **Yes**.

LPR is now properly installed on your computer.

## **Printer Installation**

**Step 1.** Open your printers folder. Go to **Start > Settings > Printers**.

**Step 2.** Double-click on the **Add Printer** icon which will launch the Add Printer Wizard.



Select **Network Printer** and click on **Next**.

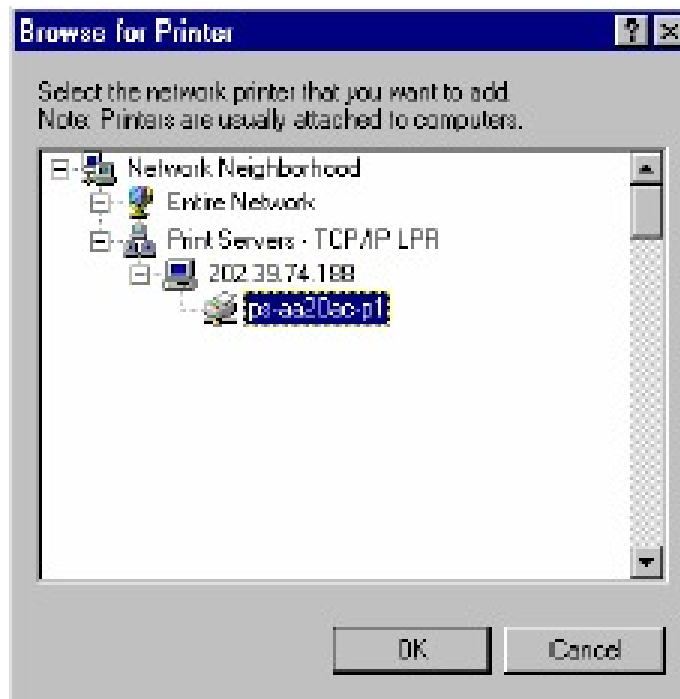


# TE100-P1P/TE100-P1U F.A.Q.

**Step 3.** Click on the **Browse** button and browse to the print server.



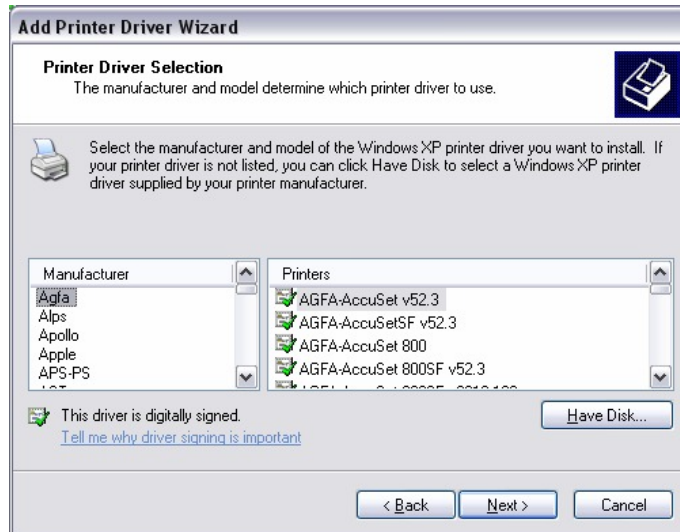
Highlight the Print Server and click on **OK** to return to the Add Printer Wizard.



Click on **Next**. If you are unable to do this you can manually enter the Print Server by using two backslashes, the IP address, one backslash and the port name of you printer.

# TE100-P1P/TE100-P1U F.A.Q.

**Step 4.** You will now be asked to select a printer to install.



If you can not find your printer from the list, click on the **Have Disk** button and browse to the printer drivers for your printer (floppy, CD, or downloaded).

**Step 5.** If you find your printer in the list, click on it and then click on **OK**. Windows will install the drivers.

**Step 6.** Once the drivers been installed, click **Finish** to complete the installation. You may be prompted for your Windows CD. If you are prompted for the CD, browse to the Win98 folder on the Windows CD and click on **OK**

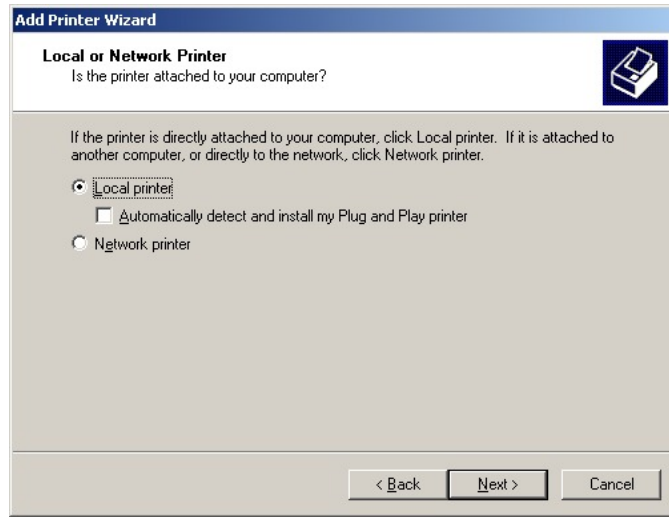
**Step 7.** After the drivers have been installed for your printer, you will be prompted to print a test page. Select **Yes** and click on **Finish**.

# TE100-P1P/TE100-P1U F.A.Q.

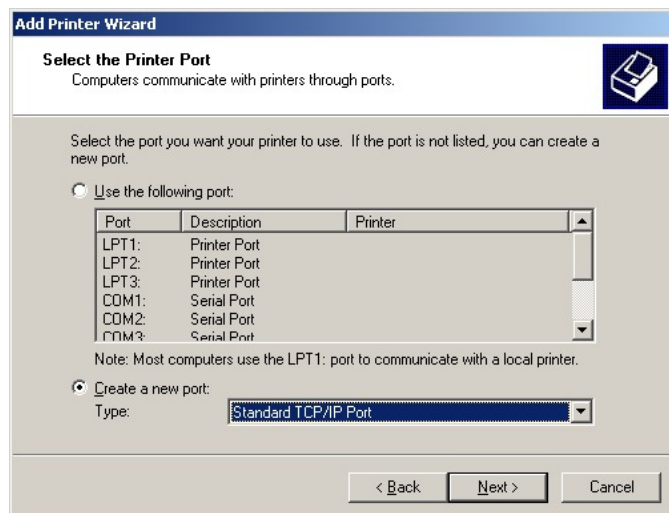
## Q: How do I install my printer on Windows 2000/XP?

**A:** **Step 1.** Go to **Start>Settings>Printers>Add New Printer** (Win XP - **Start>Printers and Faxes>Add a Printer**).

**Step 2.** Select **Local Printer**. Make sure to uncheck **Automatically detect and install my plug and play printer**. Click **Next**.



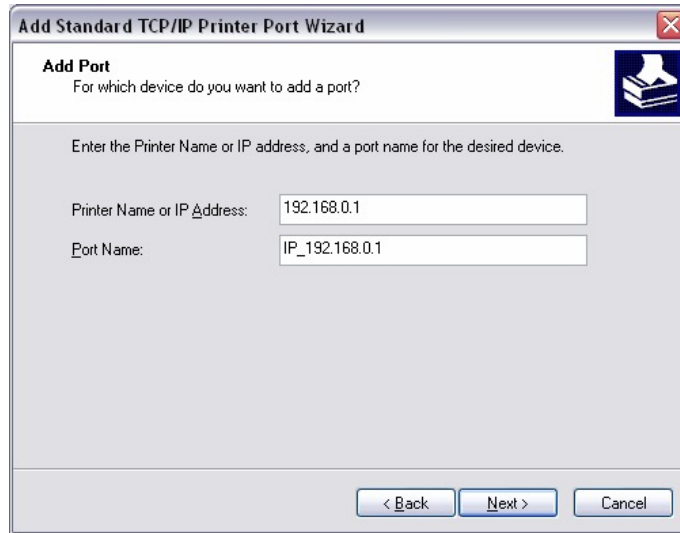
**Step 3.** Select **Create a New Port** and select **Standard TCP/IP port**. Click **Next**.





# TE100-P1P/TE100-P1U F.A.Q.

**Step 4.** Enter the IP address of the router (192.168.0.1). Leave the port name with the default name. Click **Next**.



**Add Standard TCP/IP Printer Port Wizard**

**Add Port**  
For which device do you want to add a port?

Enter the Printer Name or IP address, and a port name for the desired device.

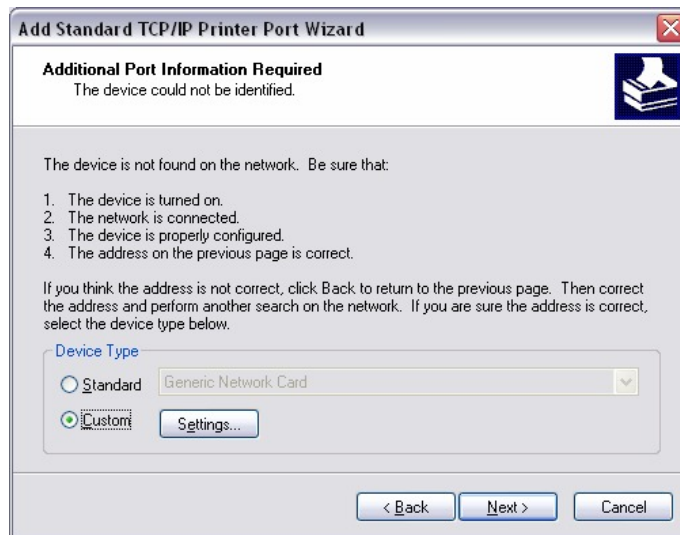
Printer Name or IP Address: 192.168.0.1

Port Name: IP\_192.168.0.1

< Back   Next >   Cancel

**Step 5.** You will get a message saying that additional port information required.

**Step 6.** Select **Custom** and then click **Settings**.



**Add Standard TCP/IP Printer Port Wizard**

**Additional Port Information Required**  
The device could not be identified.

The device is not found on the network. Be sure that:

1. The device is turned on.
2. The network is connected.
3. The device is properly configured.
4. The address on the previous page is correct.

If you think the address is not correct, click Back to return to the previous page. Then correct the address and perform another search on the network. If you are sure the address is correct, select the device type below.

**Device Type**

Standard   Generic Network Card

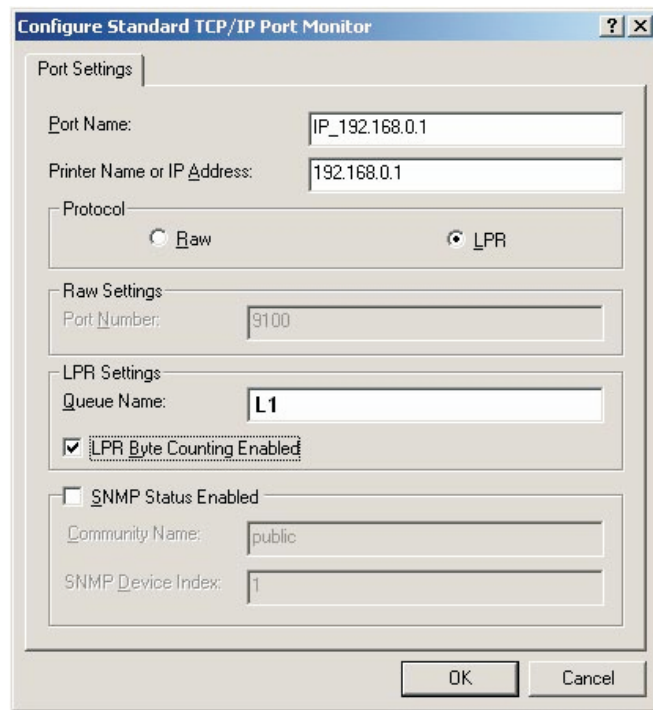
Custom   Settings...

< Back   Next >   Cancel

# TE100-P1P/TE100-P1U F.A.Q.

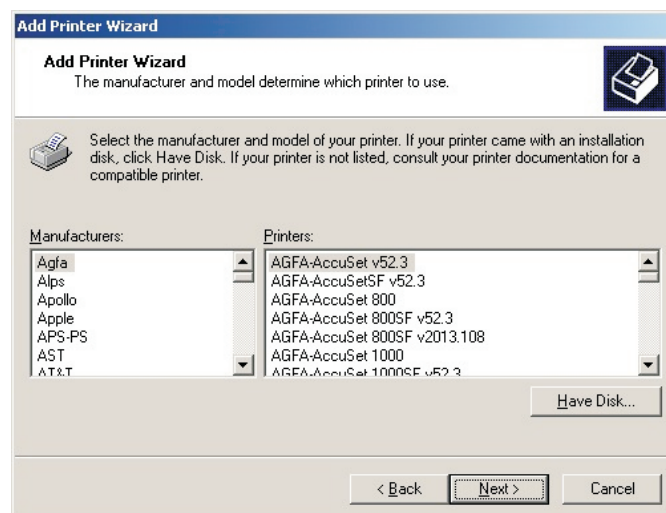
**Step 7.** Set Protocol to **LPR**.

**Step 8.** For the **LPR Settings** the Te100-P1P/U the port name is L1 It is case sensitive! In most cases, check **LPR Byte Counting Enabled**. If you cannot print, then try un-checking this.



**Step 9.** Select **OK > Finish**.

**Step 10.** Continue with the **Add Printer Wizard**. Choose your printer from the list or click **Have Disk** and point to your printer driver disk.



# TE100-P1P/TE100-P1U F.A.Q.

## **Q: Does the TE100- P1U/P support Macintosh operating systems?**

**A:** Yes, but you must assign the print server an IP address from a Windows based operating system first. Once that is done you can use LPR or LPD printing for the Macs and you can manage the print server by entering its IP address into a web browser. Also the printer must be a postscript printer.

---

## **Q: What are the queue names of the TE100- P1U/P?**

**A:** The TE100-P1P/U port name is L1. It is case sensitive.

---

## **Q: Why can't I see my printer status information?**

**A:** Print servers are IEEE1284 bi-directional compatible. This means that data can be sent and received in both directions between the printer and the print server.

Toner status, paper level, etc., will not be communicated back to the PC. In order to get printer status information, the proprietary printer driver has embedded code that needs to be passed on to the print server, decoded, then interpreted by the print server. Trendware print servers do not support embedded driver codes. Trendware print servers, whether in Gateways or Stand Alone, are plain TCP/IP print servers.