



TEG-S80TX **8-Port 10/100/1000Mbps NWay Copper Gigabit Ethernet Switch**

TRENDnet's TEG-S80TX 8-port 10/100/1000Mbps NWay Gigabit Switch consist of eight 10/100/1000Mbps NWay Gigabit Ethernet ports with all ports delivering auto-sense connection speed, duplex mode, and media type (MDI-II or MDI-X). Users can connect Gigabit Server(s) to the Gigabit port(s) to increase network performance or uplink Copper Gigabit Switches together to create high-bandwidth Gigabit backbones. TRENDnet's TEG-S80TX provides simple migration, scalability, and flexibility to handle new applications and data types making it a highly reliable and cost effective solution for high-speed network connectivity.



FEATURES

- 8 x 10/100/1000Mbps Gigabit Ethernet Ports
- Full/Half duplex transfer mode for each port (1000Mbps in full-duplex only)
- Auto MDI-X/MDI-II on each port
- Supports store and forward switching architecture with non-blocking full wire speed performance
- Supports aging function and 802.3x flow control for full-duplex mode and collision-based back pressure function for half-duplex mode operation
- 8K MAC addresses table per device
- 512Kbytes packet buffer per device
- Extensive front-panel diagnostic LEDs
- 5 Year Warranty

BENEFITS

- **Integration Friendly:**
Plug-n-Play. Connects with current Fast Ethernet CAT5 cables.
- **Flexible:**
All ports automatically negotiate 10/100/1000Mbps network speed, half/full-duplex mode, and MDI-II/MDI-X connector type.
- **Expandability:**
Connect to another Gigabit Switch to create a Gigabit backbone.
- **Performance:**
Gigabit performance, 10 times faster than the 100Mbps Fast Ethernet.



TEG-S80TX

8-Port 10/100/1000Mbps NWay Copper Gigabit Ethernet Switch

SPECIFICATIONS

Standards:

- IEEE 802.3 10Base-T Ethernet, IEEE 802.3u 100Base-TX Fast Ethernet, IEEE 802.3ab 1000Base-T Gigabit Ethernet, ANSI/IEEE 802.3 NWay Auto-Negotiation, IEEE 802.3x Full-Duplex Flow Control

Data Transfer Rate:

- Ethernet: 10Mbps (Half-Duplex), 20Mbps (Full-Duplex)
- Fast Ethernet: 100Mbps (Half-Duplex), 200Mbps (Full-Duplex)
- Gigabit Ethernet: 2000Mbps (Full-Duplex)

Protocol:

- CSMA/CD

Topology:

- Star

Cabling:

- Ethernet: UTP CAT 3,4,5, EIA/ITA-568 100-ohm screened twisted pair (STP)
- Fast Ethernet: UTP CAT 5, EIA/TIA-568 100ohm screened twisted pair (STP)
- Gigabit Ethernet: UTP CAT 5, EIA/TIA-568 100-ohm screened twisted pair (STP)

Cable Length:

- 100 meters maximum

Data RAM Buffers:

- 512 Kbytes per device

Filtering Address Table:

- 8K entries per device

Diagnostic LEDs:

- Power, 10M LINK/ACT, 100M LINK/ACT, 1000M LINK/ACT, FDX/COL

Power Consumption:

- 100~240 VAC 50/60hz, Internal Universal Power Supply

Dimensions:

- 440 x 200 x 44mm (17.3" x 7.9" x 1.7") (W x H x D)

Weight:

- 1.66 kg (3.65 lb)

Temperature:

- Operating: 0° ~ 50°C (32° ~ 122°F)
- Storage: -10° ~ 55°C (14° ~ 131°F)

Humidity:

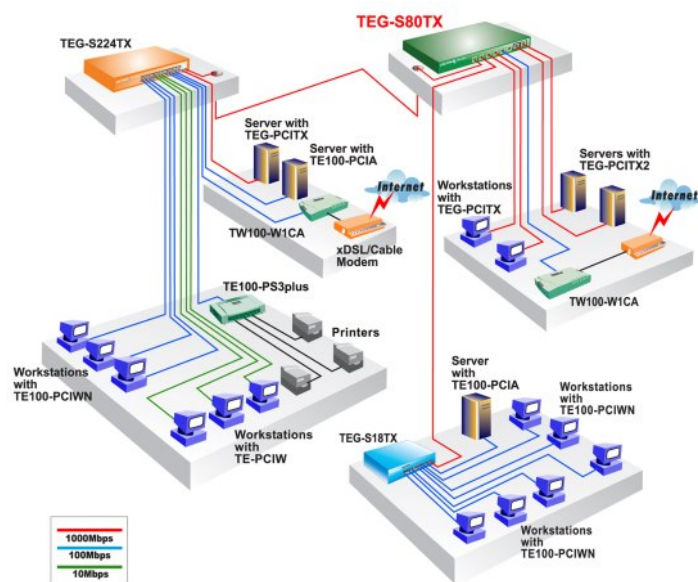
- 5 % to 95 % non-condensing

Certifications:

- FCC Class A, CE Class A, VCCI-A



NETWORKING SOLUTIONS



To Order Please Call:
1-888-326-6061

PRODUCT INFORMATION

- TEG-S28TX: 10-Port 10/100/1000Mbps NWay Copper Gigabit Ethernet Switch
- TEG-S224TX: 26-port 10/100/1000Mbps NWay Copper Gigabit Ethernet Switch
- TEG-S80TX: 8-port 10/100/1000Mbps NWay Copper Gigabit Switch
- TEG-S18TX: 9-port 10/100/1000Mbps NWay Copper Gigabit Switch
- TEG-PCITX: 32-Bit PCI 10/100/1000Mbps NWay Copper Gigabit Ethernet Card
- TEG-PCITX2: 32/64-Bit PCI 10/100/1000Mbps NWay Copper Gigabit Ethernet Card

ORDERING INFORMATION

TRENDware International, Inc.
3135 Kashiwa Street
Torrance, CA. 90505. USA
Tel: 310-891-1100
Fax: 310-891-1111
Web: www.TRENDNET.com
Email: sales@trendware.com

TRENDnet
TRENDware, USA