



TEG-S224TXA **26-Port 10/100/1000Mbps Smart Copper Gigabit Switch**

TRENDnet's TEG-S224TXA is a 26-port 10/100/1000Mbps Smart Gigabit Ethernet Switch with 24 10/100Mbps Fast Ethernet ports and 2 10/100/1000Mbps Copper Gigabit Ethernet ports. All ports supports wire-speed transfer mode with non-blocking store-and-forward switching method. This high-performance switch also supports port-based Quality of Service (QoS) for priority data packet processing. With Broadcast Storm Control and port-based VLAN support, the TEG-S224TXA is powerful and easy-to-use in reducing unnecessary broadcast traffic, segmenting the network, and enhancing network security.

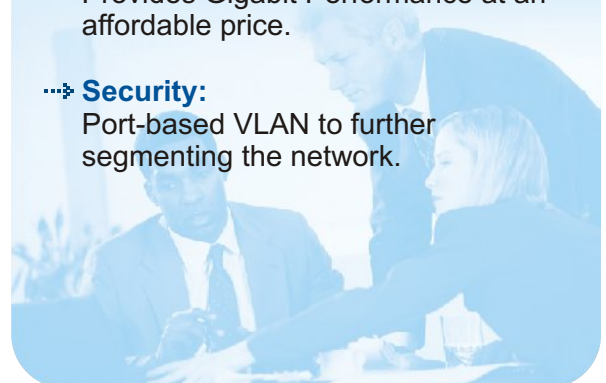


FEATURES

- ...→ 2 10/100/1000Mbps Auto-Negotiation Copper Gigabit Ethernet Ports
- ...→ 24 10/100Mbps Auto-Negotiation Fast Ethernet Ports
- ...→ Full/Half Duplex transfer mode for each Fast Ethernet port
- ...→ Full Duplex transfer mode for Gigabit Ethernet ports
- ...→ Auto-MDIX media type detection for all ports; easy uplink with any port.
- ...→ 802.3x flow control for full duplex and collision-based back pressure function for half duplex operation
- ...→ Supports store-and-forward architecture with non-blocking full wire-speed performance
- ...→ Supports up to 8K unicast addresses entities per device
- ...→ Supports 512KB packet buffer per device
- ...→ Port-based VLAN (26 groups) and Port-Based Quality of Service (QoS) (2 levels)
- ...→ RS 232 DCE Console Port for easy configuration with terminal emulation program (serial cable included)
- ...→ Extensive front panel diagnostic LEDs
- ...→ Standard 19" rack-mount size
- ...→ 5-Year Warranty

BENEFITS

- ...→ **Performance:**
Provides two 1000Mbps Gigabit connections to Power Servers and/or other Gigabit Switch, with both ports running at full wire-speed.
- ...→ **Flexibility:**
Connects to 10Base-T, 100Base-TX, and 1000Base-T Networks.
- ...→ **Expandability:**
Simple expansion can be done by uplinking to other 10/100Mbps or Gigabit Switches.
- ...→ **Cost Effectiveness:**
Provides Gigabit Performance at an affordable price.
- ...→ **Security:**
Port-based VLAN to further segmenting the network.



TEG-S224TXA

26-Port 10/100/1000Mbps Smart Copper Gigabit Switch

SPECIFICATIONS

Standards:

- IEEE 802.3 10Base-T Ethernet, IEEE 802.3u 100Base-TX Fast Ethernet, IEEE 802.3ab 1000Base-T Gigabit Ethernet, ANSI/IEEE 802.3 Auto-Negotiation, IEEE 802.3x Full Duplex Flow Control

Data Transfer Rate:

- Ethernet: 10Mbps (Half Duplex), 20Mbps (Full Duplex),
- Fast Ethernet: 100Mbps (Half Duplex), 200Mbps (Full Duplex),
- Gigabit Ethernet: 2000Mbps (Full Duplex)

Cabling:

- Ethernet: Cat. 3,4,5, UTP/STP, EIA/TIA-568, 100-Ohm, 100 meters max
- Fast Ethernet: Cat. 5, UTP/STP, EIA/TIA-568, 100-Ohm, 100 meters max
- Gigabit Ethernet: Cat. 5, UTP/STP, EIA/TIA-568, 100-Ohm, 100 meters max

Console Port:

- RS-232, male 9-Pin Serial Port (DB-9 female-to-female cable included)

Protocol:

- CSMA/CD

Topology:

- Star

Data RAM Buffers:

- 512KB per Device

Filtering Address Table:

- 8K entries per device

Diagnostic LEDs:

- Unit: POWER, SYSTEM.
- 10/100Mbps Ports: 100Mbps, LINK/ACT
- 10/100/1000Mbps Ports: 100Mbps, 1000Mbps, LINK/ACT

Power Consumption:

- 100~240V AC, 50/60hz, Internal Universal Power Supply

Dimensions:

- 440 x 200 x 44mm (17.3 x 7.87 x 1.73 inch) (W x H x D)

Weight:

- 2.8 Kg. (6.2 lb.)

Temperature:

- Operating: 0°~40° C (32°~104° F)
- Storage: -10°~70° C (14°~158° F)

Humidity:

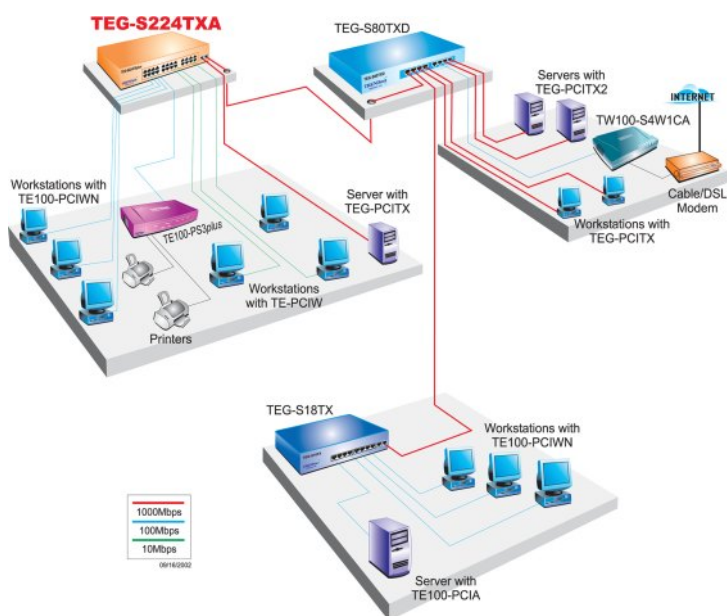
- Operating: 10% to 90% non-condensing
- Storage: 5% ~ 90% non-condensing

Certifications:

- CE Class A, FCC Class A, VCCI-A



NETWORKING SOLUTIONS



PRODUCT INFORMATION

- TEG-S224TXA: 26-port 10/100/1000Mbps Smart Copper Gigabit Switch
- TEG-S18TX: 9-port 10/100/1000Mbps Copper Gigabit Switch
- TEG-S224TX: 26-port 10/100/1000Mbps Copper Gigabit Switch
- TEG-S40TXD: 4-port 10/100/1000Mbps Copper Gigabit Switch
- TEG-S80TXD: 8-port 10/100/1000Mbps Copper Gigabit Switch
- TEG-PCITX: 32-Bit PCI 10/100/1000Mbps Copper Gigabit Ethernet Adaptor
- TEG-PCITX2: 64/32-Bit PCI 10/100/1000Mbps Copper Gigabit Ethernet Adaptor

ORDERING INFORMATION

TRENDware International, Inc.

3135 Kashiwa Street
Torrance, CA. 90505. USA
Tel: 310-891-1100
Fax: 310-891-1111
Web: www.TRENDNET.com
Email: sales@trendware.com



To Order Please Call:
1-888-326-6061