



## **TEG-S224** **26-port 10/100/1000Mbps Copper Gigabit Switch**

TRENDnet's TEG-S224 is a 26-port 10/100/1000Mbps Gigabit Ethernet Switch with 24 10/100Mbps Fast Ethernet ports and 2 10/100/1000Mbps Copper Gigabit Ethernet ports. Users can connect Servers to the Gigabit port(s) to increase network performance or uplink Copper Gigabit Switches together to create a high-bandwidth Gigabit backbone. TRENDnet's TEG-S224 provides simple migration, scalability and flexibility to handle new applications and data types making it a highly reliable and cost effective solution for high-speed network connectivity.



### **FEATURES**

- 24 x 10/100Mbps Auto-negotiation MDIX Fast Ethernet Ports
- 2 x 10/100/1000Mbps Auto-negotiation, Auto-MDIX Gigabit Ports
- Full/Half duplex transfer mode for each port (full duplex mode only for Gigabit)
- Store and Forward switching method
- Integrated address Look-Up Engine with 8K absolute MAC address table
- Supports 2.5MB RAM data buffering
- IEEE 802.3x flow control for Full Duplex mode
- Back pressure flow control for Half Duplex mode
- Extensive Front-Panel Diagnostic LEDs
- Standard 19" Rack-mount design
- 5-Years Warranty

### **BENEFITS**

- **Easy Upgrade:**  
Each RJ-45 port auto-senses connection speed, duplex type and MDI-X media type. Connect to 10 or 100 or 1000Mbps network devices with straight through or crossover cable.
- **Expandability:**  
Simple expansion by uplinking to 10/100Mbps or Gigabit Switches
- **Performance:**  
Provides non-blocking high-performance with internal switch controller.
- **Cost-Effectiveness:**  
The TEG-S224 provides Gigabit Ethernet at an affordable price.



# TEG-S224

## 26-port 10/100/1000Mbps Copper Gigabit Switch

### SPECIFICATIONS

#### LAN Standards:

- IEEE 802.3 10Base-T; IEEE 802.3u 100Base-TX, IEEE 802.3ab 1000Base-T, IEEE 802.3x Full Duplex Flow Control

#### Network Media:

- Ethernet: UTP/STP Cat. 3, 4, 5
- Fast Ethernet: UTP/STP Cat. 5
- Gigabit: UTP/STP Cat. 5/5E

#### Protocol:

- CSMA/CD

#### Topology:

- Star

#### LAN Port:

- 16 x 10/100Mbps Auto Negotiation, Auto-MDIX Fast Ethernet ports
- 2 x 10/100/1000Mbps Auto Negotiation, Auto MDIX Gigabit ports

#### Address Table:

- 8K entries per device

#### Data RAM Buffer:

- 2.5MB per device

#### Data Transfer Rate:

- Ethernet: 10/20Mbps – Half/Full-Duplex
- Fast Ethernet: 100/200Mbps – Half/Full Duplex
- Gigabit Ethernet: 1000/2000Mbps – Half/Full Duplex

#### Diagnostic LEDs:

- Per Unit: Power System
- Per Fast Ethernet Port: Link/ACT, 100M (port 1~24)
- Per Gigabit Ethernet Port: Link/ACT, 1000M, 100M (port 25, 26)

#### Power Consumption:

- 11.75 Watts. Max

#### Power Supply:

- 100-240V AC, 50/60Hz Internal Universal Power Supply

#### Dimensions (WxHxD):

- 440 x 210 x 44 mm (17.32 x 8.3 x 1.73 inches)

#### Weight:

- 4.7 lb

#### Temperature:

- Operating Temperature: 0° ~ 40° C (32° ~ 104° F)
- Storage Temperature: -10° ~ 70° C (14° ~ 158° F)

#### Humidity:

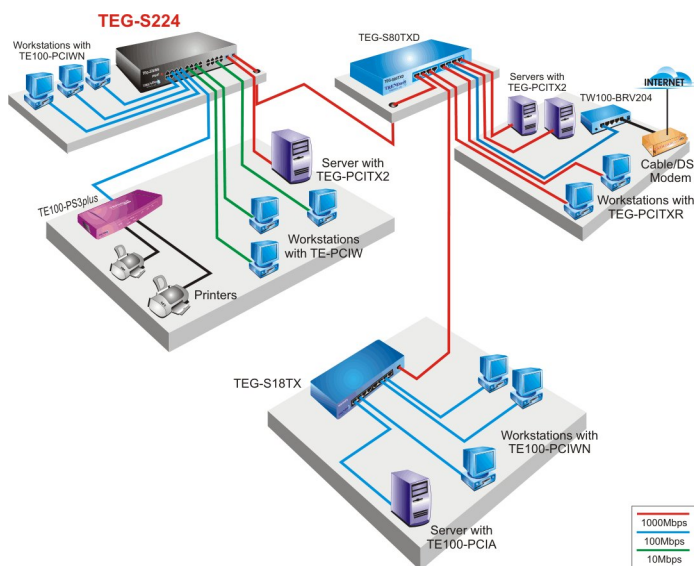
- 10% ~ 90% (no-condensing)

#### Certifications:

- FCC Class A, CE Mark A, VCCI-A



### NETWORKING SOLUTIONS



### PRODUCT INFORMATION

- ➔ **TEG-S224:**  
26-Port 10/100/1000Mbps Copper Gigabit Switch (Rack Mount)
- ➔ **TEG-S18TXE:**  
9-Port (8 10/100, 1 10/100/1000) Copper Gigabit Mini Switch
- ➔ **TEG-S80TXD:**  
8-Port Copper Gigabit Switch

### ORDERING INFORMATION

#### TRENDware International, Inc.

3135 Kashiwa Street  
Torrance, CA. 90505. USA

Tel: 310-891-1100

Fax: 310-891-1111

Web: [www.TRENDNET.com](http://www.TRENDNET.com)

Email: [sales@trendware.com](mailto:sales@trendware.com)



**To Order Please Call:**  
**1-888-326-6061**