



TE100-S28plus

10-Port (2 x 10/100Mbps, 8 x 10Mbps) Fast Ethernet Switching Hub

The TE100-S28+ switching hub provides a cost-effective, high-bandwidth solution for delivering wire-speed to eight 10Mbps and two 10/100Mbps Ethernet ports and allows easy integration of 10-BaseT and 100Base-TX Ethernet workgroups into one network. All ports are full-duplex, which allows maximum network performance. A built-in automatic address learning function allows for a safer and more flexible network. Additionally, store-and-forward switching provides low latency and high data integrity.

FEATURES

- Compliant with 10Base-T, IEEE802.3 and 100Base-TX, IEEE802.3u standards
- Two ports for 10/100Mbps support, eight ports for 10Mbps support
- Built-in address self-learning technology
- EIA-19" Rack Mountable
- Store-and-Forward Ethernet packet switching provides low latency and high data integrity
- All ports support full-duplex/half-duplex operation
- Comprehensive LED indicators to facilitate monitoring and troubleshooting
- 5-years warranty

TREND SPEC'S

Standard:	IEEE 802.3u, 100Base-TX, and IEEE 802.3 10Base-T
Protocol:	CSMA/CD
Speed:	10Mbps for 10Base-T/100Mbps for 100Base-TX
Cabling:	CAT 3, 4, 5 UTP/STP for 10Base-T/CAT 5 UTP/STP for 100Base-TX 62.5/125 micron multimode fiber (2km)
LED's:	Per Hub: Power Per 10/100Mbps port: Link, Activity, 100Mbps, Full-Duplex Per 10Mbps port: Link, Activity, Full-Duplex
Power:	Internal Power Supply, (100 - 240V, 50/60Hz)
Dimensions:	411 x 203 x 44 mm / 16.18" x 17.99" x 1.73" (L x W x H)
Weight:	2.98 Kg / 6.56 lb.
Operating:	0° to 50° C / 32° to 122° F
Storage:	-20° to 80° C / -4° to 176° F
Humidity:	10% to 90% (non-condensing)
Certification:	FCC, UL, CSA, CE

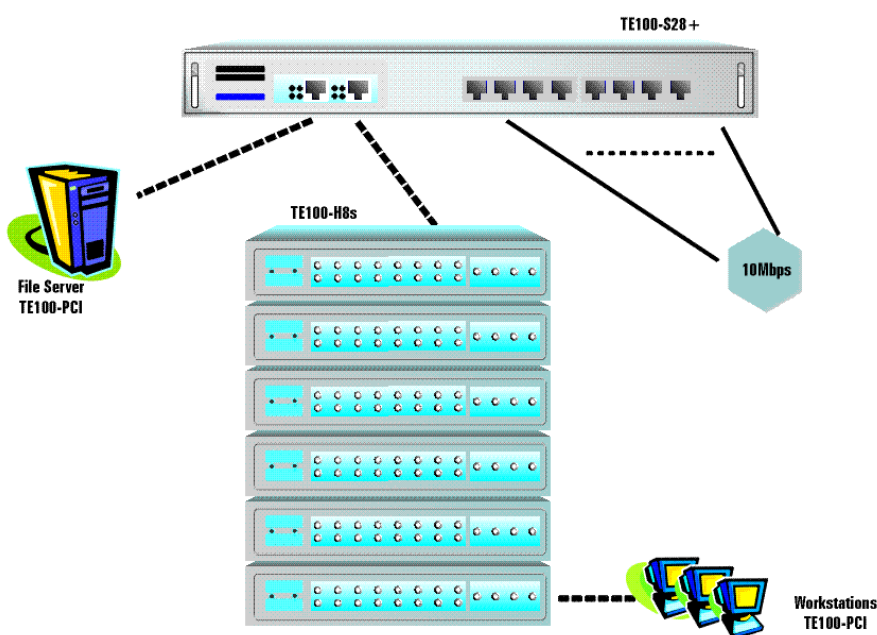
TE100-S28*plus*

10-Port (2 x 10/100Mbps, 8 x 10Mbps) Fast Ethernet Switching Hub

TOP FIVE REASONS THE TE100-S28*plus* IS A LASTING TREND

- Flexible: Connects both 10Mbps and 100Mbps segments to one network.
Performance: All ports are full-duplex which double network speed.
Easy-to-use: Built-in address self-learning technology.
Reliable: Store-and-Forward Ethernet packet switching provides low latency and high data integrity.
Compatible: Complies with 10Base-T, IEEE802.3 and 100Base-TX, IEEE802.3u standards

FAST ETHERNET SOLUTIONS



PRODUCT INFORMATION

TE100-S28 <i>plus</i>	10-port (2 x 10/100Mbps + 8 x 10Mbps) Switching Hub
TE100-S22	2-port (2 x 10/100Mbps) N-way Switching Hub
TE100-S88 <i>plus</i>	8-port (8 x 10/100Mbps) N-way Switching Hub
TE100-S1212	12-port (12 x 10/100Mbps) N-way Switching Hub



To order please call: 888-326-6061
3135 Kashiwa Street, Torrance, CA 90505 • (310) 891-1100 • Fax: (310) 891-1111
• Sales: sales@trendware.com • Support: techsupport@trendware.com