



TE100-S2424V **24-port 10/100Mbps N-way VLAN Switch**

TRENDnet's unique 24-port 10/100Mbps N-way VLAN Switch has an optional fiber optic and BNC (10Base-2) module that make this switch flexible enough for mid-sized companies and branch offices to meet their high bandwidth requirements. The TE100-S2424V supports both 10/100Mbps speed and half-/full-duplex modes on the same port. Additionally, it features programmable configuration for half-duplex and full-duplex modes. By using standard auto-negotiation, it provides a cost-effective way of integrating 10Mbps segments with 100Mbps Fast Ethernet networks, ideal for extending the distance between two 100Mbps network segments. Supporting Virtual Local Area Net-working (VLAN), the TE100-S2424V is powerful and easy-to-use in reducing unnecessary broadcast traffic, segment the network, and enhance network security.



FEATURES

- ...→ Complies with IEEE 802.3 10Base-T, IEEE 802.3u 100Base-TX/FX standards
- ...→ 24 10/100Mbps auto-negotiating and auto-sensing ports
- ...→ Supports four "port-based" VLAN
- ...→ 2 or 4 "port-based" trunking
- ...→ Programmable configuration for 10/100Mbps or half-/full-duplex modes
- ...→ Store-and-forward packet switching
- ...→ Half- and full-duplex operation for all UTP and fiber ports
- ...→ Supports 2K MAC address
- ...→ Auto-learning of network configuration
- ...→ Push button uplink port (shared) for easy expansion
- ...→ Optional fiber module port (multi-mode SC-type, VF-45, or 10Base-2 BNC module)
- ...→ Plug and Play
- ...→ Front panel port status LEDs
- ...→ EIA-19 rack mountable
- ...→ 5 Year Warranty

BENEFITS

- ...→ **Easy Upgrade:**
Ethernet workgroups are able to upgrade to Fast Ethernet by changing adapters and a hub without changing switches.
- ...→ **Expandability:**
Expand the connection up to 2km with optional fiber module or optional BNC module (10Mbps thin coax cable).
- ...→ **Flexibility:**
Port-based VLAN reduces broadcast traffic and enhance network security.
- ...→ **Performance:**
Provides non-blocking high performance with internal switch controller.
- ...→ **Cost-Effectiveness:**
The TE100-S2424V presents 10/100Mbps of Fast Ethernet at an affordable rate.

TE100-S2424V

24-port 10/100Mbps N-way VLAN Switch

SPECIFICATIONS

Standards:

- IEEE 802.3 10Base-T, IEEE 802.3m 100Base-TX/100Base-FX, ANSI / IEEE 802.3 N-way auto-negotiation

Forwarding Rate:

- 14,880pps for 10Mbps, 148,800pps for 100Mbps

Switching Method:

- Store-and-forward

Cabling:

- 10Base-T: 2-pair UTP CAT 3, 4, 5 up to 100m (328ft.)
- 100Base-TX: 2-pair UTP CAT 5 up to 100m (328ft.)
- 100Base-FX: 62.5/125 multi-mode fiber optic cable up to 2,000m (6,560ft.)

Diagnostic LEDs:

- Per Unit: Power, Uplink, Module Enable (3 LEDs),
- Per Port: LINK/ACT, 100, Full-duplex/Collision (3 LEDs)

Power:

- Internal universal power supply (100-250VAC, 47-63Hz, 33 Watts max.)

Dimensions:

- 440 x 205 x 45 mm (17.3 x 8.0 x 1.8 inches)

Weight:

- 2.9 kg (6.4 lbs.)

Temperature:

- Operating: 0° to 40° C (32° to 104° F)
- Storage: -25° to 70° C (-13° to 158° F)

Humidity:

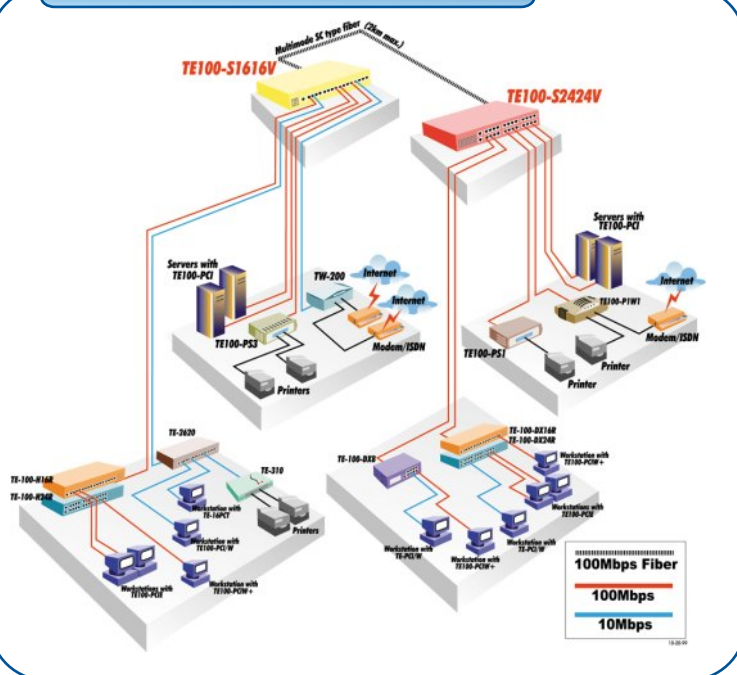
- 10 % to 90 % non-condensing

Certifications:

- FCC, UL, CE, VCCI Class A



NETWORKING SOLUTIONS



To Order Please Call:
1-888-326-6061

PRODUCT INFORMATION

- **TE100-S2424V:** 24-port 10/100Mbps N-way VLAN Switch
- **TE100-S1616V:** 16-port 10/100Mbps N-way VLAN Switch
- **TE100-SVFXM:** SC-type Fiber Slide-in Module for TE100-S1616V/S2424V
- **TE100-SVBM:** BNC Slide-in Module for TE100-S1616V/S2424V
- **TE100-SVF45M:** VF-45 Fiber Slide-in Module for TE100-S1616V/S2424V
- **TE100-S1616:** 16-port 10/100Mbps N-way Switch
- **TE100-S2424:** 24-port 10/100Mbps N-way Switch
- **TE100-SFXM:** SC-type Fiber Slide-in Module for TE100-S1616/S2424

ORDERING INFORMATION

TRENDware International, Inc.

3135 Kashiwa Street
Torrance, CA. 90505. USA

Tel: 310-891-1100

Fax: 310-891-1111

Web: www.TRENDNET.com

Email: sales@trendware.com

TRENDnet
TRENDware, USA