



TE100-S1616V **16-port 10/100Mbps N-way VLAN Switch**

TRENDnet's unique 16-port 10/100Mbps N-way VLAN Switch has an optional fiber optic and BNC (10Base-2) module that makes this switch flexible enough for mid-sized companies and branch offices to meet their high bandwidth requirements. The TE100-S1616V supports both 10/100Mbps speed and half-/full-duplex modes on the same port. Additionally, it features programmable reconfiguration for half-duplex and full-duplex modes. By using standard auto-negotiation, it provides a cost-effective way of integrating 10Mbps segments with 100Mbps Fast Ethernet networks, ideal for extending the distance between two 100Mbps network segments. Supporting Virtual Local Area Networking (VLAN), the TE100-S1616V is powerful and easy-to-use in reducing unnecessary broadcast traffic, segment the network, and enhance network security.



FEATURES

- Complies with IEEE 802.3 10Base-T, IEEE 802.3u 100Base-TX/FX standards
- 16 10/100Mbps auto-negotiation and auto-sensing ports
- Supports four Port-based VLAN
- Programmable reconfiguration for half- and full-duplex modes
- Store-and-forward packet switching
- Half- and full-duplex operation for all UTP and fiber ports
- Supports 1,024 MAC address
- Auto-learning of network configuration
- Push button uplink port (shared) for easy expansion
- Optional fiber module port (multi-mode SC-type) or 10Base-2 BNC module
- Plug and Play
- Front panel port status LEDs
- EIA-19 rack mountable
- 5 Year Warranty

BENEFITS

- **Easy Upgrade:**
Ethernet workgroups are able to upgrade to Fast Ethernet by changing adapters and a hub without changing switches.
- **Expandability:**
Expand the connection up to 2km with optional fiber module or optional BNC module (10Mbps thin coax cable).
- **Flexibility:**
Port-based VLAN reduces broadcast traffic and enhance network security.
- **Cost Effective:**
Provides non-blocking high performance with internal switch controller.
- **Performance:**
The TE100-S1616V presents 10/100Mbps of Fast Ethernet at an affordable rate.

TE100-S1616V

16-port 10/100Mbps N-way VLAN Switch

SPECIFICATIONS

Standards:

- IEEE 802.3 10Base-T, IEEE 802.3m 100Base-TX/100Base-FX, ANSI / IEEE 802.3 N-way auto-negotiation

Forwarding Rate:

- 14,880pps for 10Mbps, 148,800pps for 100Mbps

Switching Method:

- Store-and-forward

Cabling:

- 10Base-T: 2-pair UTP CAT 3, 4, 5 up to 100m (328ft.),
- 100Base-TX: 2-pair UTP CAT 5 up to 100m (328ft.),
- 100Base-FX: 62.5/125 multi-mode fiber optic cable up to 2,000m (6,560ft.)

Diagnostic LEDs:

- Per Unit: Power, Uplink, Module Enable (3 LEDs),
- Per Port: 100Mbps/TX, 10Mbps/RX, Full-duplex/Collision (3 LEDs)

Power:

- Internal universal power supply (100-240VAC, 50-60Hz, 25Watts max.)

Dimensions:

- 443 x 203 x 44 mm (17.4 x 8 x 1.7 inches)

Weight:

- 2.68 kg (5.9 lbs.)

Temperature:

- Operating: 0° to 40° C (32° to 104° F)
- Storage: -25° to 70° C (-13° to 158° F)

Humidity:

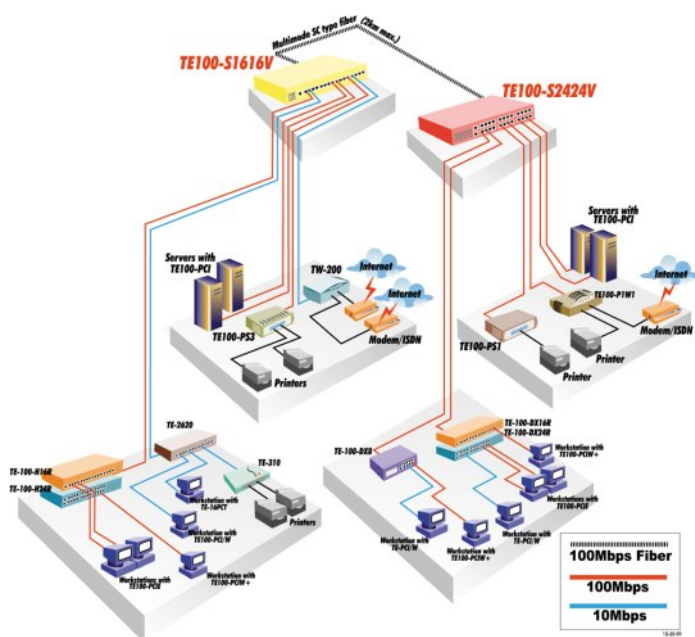
- 10 % to 90 % non-condensing

Certifications:

- FCC, UL, CE, VCCI Class A



NETWORKING SOLUTIONS



To Order Please Call:
1-888-326-6061

PRODUCT INFORMATION

- **TE100-S2424V:** 24-port 10/100Mbps N-way VLAN Switch
- **TE100-S1616V:** 16-port 10/100Mbps N-way VLAN Switch
- **TE100-SVFXM:** SC-type Fiber Slide-in Module for TE100-S1616V/S2424V
- **TE100-SVBM:** BNC Slide-in Module for TE100-S1616V/S2424V
- **TE100-SVF45M:** VF-45 Fiber Slide-in Module for TE100-S1616V/S2424V
- **TE100-S1616:** 16-port 10/100Mbps N-way Switch
- **TE100-S2424:** 24-port 10/100Mbps N-way Switch
- **TE100-SFXM:** SC-type Fiber Slide-in Module for TE100-S1616/S2424

ORDERING INFORMATION

TRENDware International, Inc.
3135 Kashiwa Street
Torrance, CA. 90505. USA
Tel: 310-891-1100
Fax: 310-891-1111
Web: www.TRENDNET.com
Email: sales@trendware.com

