

TE100-PCIE *10/100Mbps Fast Ethernet PCI Card*

This economical PCI card is designed for both small office and home office environment. It utilizes high-speed 100Base-TX technology and 32-bit Bus Mastering for computers that are equipped with PCI Bus Slots. This adapter runs in bus master mode, directly sending and receiving Ethernet packets to and from memory while using a minimum CPU resources. It complies with IEEE 802.3/802.3u standards and transmits data over the Ethernet network at either 10 or 100Mbps and 20 or 200Mbps in full-duplex mode.

The TE100-PCIE utilizes one RJ-45 port to support existing 10Base-T or 100Base-TX. It also automatically senses either 10Mbps or 100Mbps, and includes a full set of drivers for popular network operating systems.

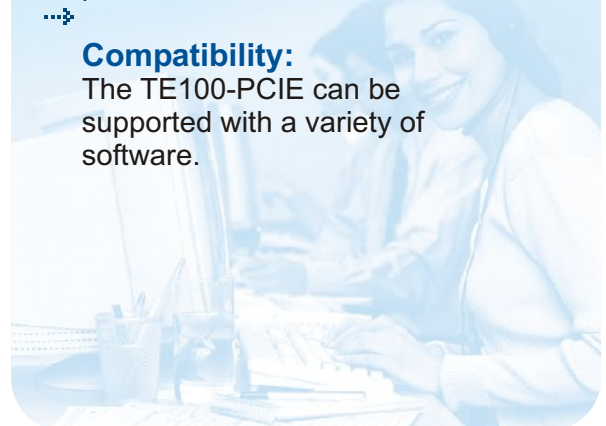


FEATURES

- PCI 32-bit Bus Master architecture
- Single RJ-45 port for both 10Base-T and 100Base-TX
- Plugs into any 486/Pentium/Pentium II® PCI Bus Slot
- 32 bit PCI Bus Master Mode
- Plug and Play (PnP)
- Supports Multi-thread operation
- Supports half-and full-duplex operation
- 5 Year Warranty

BENEFITS

- **User Friendly:**
Just plug the TE100-PCIE into your workstation and it's ready to go !
- **Speed:**
The TE100-PCIE Fast Ethernet prevents network slowdowns.
- **Versatility:**
Provides 10/100Mbps performance using only one port.
- **Affordability:**
Top performance at an economical price for small office or home office.
- **Compatibility:**
The TE100-PCIE can be supported with a variety of software.



TE100-PCIE

10/100Mbps Fast Ethernet PCI Card

SPECIFICATIONS

Standards:

- IEEE 802.3 10Base-T, IEEE 802.3u 100Base-TX

Data Bus Width:

- 32-bit bus mastering PCI

Data Transfer Rate:

- 10 or 100Mbps in full-duplex mode

Protocol:

- CSMA/CD

Connectors:

- 1 RJ-45 (10Mbps or 100Mbps speed)

Diagnostic LED's:

- Power/Transmit, Link/Receive, 100Mbps media selection

Certifications:

- FCC Class A, CE

Temperature:

- Operating: 0° to 50° C (32° -122° F)
- Storage: -25° to 70° C (-13° to 158° F)

Humidity:

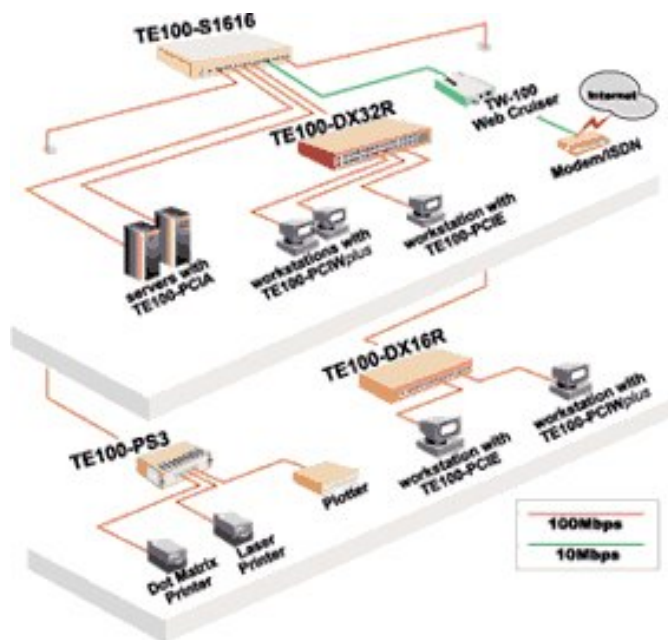
- Operating: 10 to 70% (non-condensing)
- Storage: 10 to 90% (non-condensing)

Certifications:

- FCC Class B, CE



NETWORKING SOLUTIONS



To Order Please Call:
1-888-326-6061

PRODUCT INFORMATION

- ❖ **TE100-PCIA**
10/100Mbps Fast Ethernet Adapter for PCI
- ❖ **TE100-PCIE**
Boot-ROM for Netware and Windows NT
- ❖ **TE100-PCIWplus**
10/100Mbps PCI Fast Ethernet Card (Realtek Chipset)

ORDERING INFORMATION

TRENDware International, Inc.
3135 Kashiwa Street
Torrance, CA. 90505. USA
Tel: 310-891-1100
Fax: 310-891-1111
Web: www.TRENDNET.com
Email: sales@trendware.com

TRENDnet
TRENDware, USA