

## **TE100-PCBUSR** **10/100Mbps PCMCIA 32-bit CardBus Ethernet Card with XpressPort™**

TRENDnet's TE100-PCBUSR gears with leading 32-bit bus architecture and full-duplex capabilities, which liberates high-speed network performance by providing a smooth connection to both 10/100Mbps Ethernet environments. This card is the ultimate solution for the CardBus equipped addition. Its auto-negotiation feature also configures to meet any kind of network card. It also guarantees easy installation and extra low power consumption with power-down mode and broad compatibility. With XpressPort feature, users can prevent from lost or broken cable connectors and jacks. You will be hassle-free and dongle-free in connecting to information with the TE100-PCBUSR.



### FEATURES

- Inserts to top PCMCIA type II slot and leaves bottom slot available for other PCMCIA devices
- 32-bit bus-mastering data transfer
- 10/100Mbps data rates auto-negotiation
- Integrated RJ-45 XpressPort for dongle/coupler-free connection
- Full-duplex mode
- Supports Windows 95/98/ME/NT/2000/XP, Linux
- PC Card hot swap
- Ultra low power consumption
- Innovative power-down mode
- Compatible with extensive notebook models
- 5-years warranty

### BENEFITS

- **User Friendly:**  
Just plug any of these cards into your workstation and it's ready to go!
- **Speed:**  
Each card is capable of 100Mbps performance when you need it.
- **Versatility:**  
Provides 10/100Mbps performance
- **Affordability:**  
The PCMCIA Card can support a variety of software.



# TE100-PCBUSR

## 10/100Mbps PCMCIA 32-bit CardBus Ethernet Card with XpressPort™

### SPECIFICATIONS

#### Standards:

- IEEE 802.3 for 10Base-T, IEEE 802.3u for 100Base-TX  
PCMCIA CardBus PC Card standard

#### Cabling:

- CAT3, 4, 5 UTP/STP for 10Base-T, 100 meters max.
- CAT5 UTP/STP for 100Base-TX, 100 meters max.

#### Card and Socket Service Support:

- PC Card standard, Windows NT 4.x direct enabler,  
DOS/Windows 3.1, Direct enabler

#### Network Drivers:

- Windows for Workgroup 3.11, Windows 95/98/ME/NT/2000/XP,  
Novell NetWare 3.x & 4.x Client, Personal NetWare, NetWare  
Microsoft LAN Manager, Artisoft LANtastic, IBM LAN, DEC  
Pathworks, FTP, PC/TCP, Packet Driver, Linux

#### Diagnostic LEDs:

- Link 10Mbps, Link 100Mbps, Activity

#### Dimensions:

- 120 x 54 x 16 mm (4.72 x 2.13 x 0.63 inch)

#### Temperature:

- Operating: 0° ~ 65° C (32° ~ 149° F)
- Storage: 0° ~ 70° C (-4° ~ 158° F)

#### Humidity:

10 % to 95 % non-condensing

#### Power Consumption:

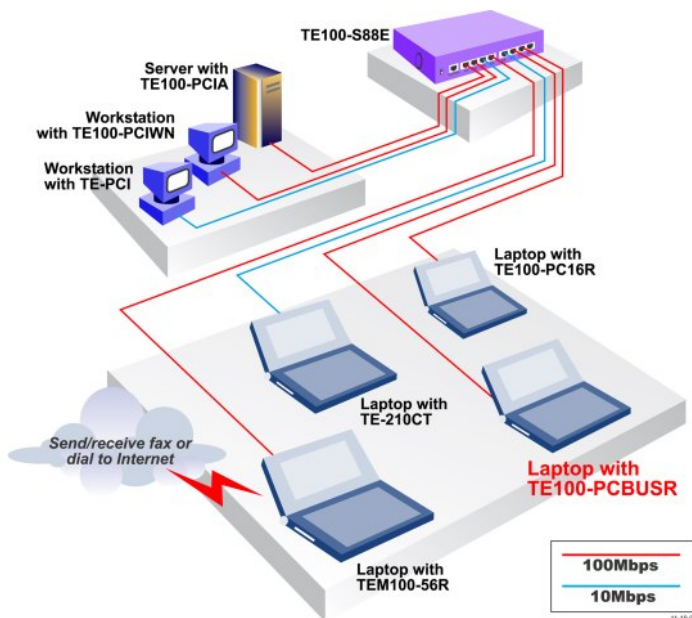
- 10Mbps: +3.3VDC, 107mA max.
- 100Mbps: +3.3VDC, 104mA max.
- Power Down: 98mA.

#### Certifications:

- FCC, UL, CE



### NETWORKING SOLUTIONS



**To Order Please Call:**  
**1-888-326-6061**

### PRODUCT INFORMATION

- **TE100-PCBUSR:** 10/100Mbps PCMCIA 32-bit CardBus Ethernet Card with XpressPort
- **TE100-PC16R:** 10/100Mbps PCMCIA Ethernet Card with XpressPort
- **TFM-560R:** 56Kbps (V.90) High Speed PCMCIA Fax Modem with XpressPort (Lucent Chipset)
- **TEM100-56R:** 10/100Mbps Fast Ethernet + 56Kbps Fax Modem Card with XpressPort

### ORDERING INFORMATION

**TRENDware International, Inc.**  
3135 Kashiwa Street  
Torrance, CA. 90505. USA  
Tel: 310-891-1100  
Fax: 310-891-1111  
Web: [www.TRENDNET.com](http://www.TRENDNET.com)  
Email: [sales@trendware.com](mailto:sales@trendware.com)

